

[About us]

[ui!] was founded in 2012 to support cities in their efforts to jointly develop and sensibly implement innovative concepts and solutions in the sense of a Smart City.

The focus of activities is concentrated on cloud-based smart services for the efficient use of existing urban real-time data in areas such as: open data platforms, urban infrastructure, sustainable mobility and intelligent energy management.

The [ui!] Group has five locations in Germany and international offices in Brisbane (Australia/New Zealand), Budapest (Hungary), Oxford (UK) and New York (USA).

We are the initiator of the SMART CITY Forum, which has more than 420 members, including representatives from cities, public utilities, regions, politics, universities, research institutes and companies. The goal is a joint exchange on the main topics Smart City and Smart Region, cooperation in various working groups, as well as the development of standards at DIN level for use in public tenders, among others.

[Contact]

Office Berlin

Fasanenstraße 3
D- 10623 Berlin
T +49 (0) 30 208 47 24 40
berlin@the-urban-institute.de

Office Darmstadt

Rössler Str. 88
D- 64293 Darmstadt
T +49 (0) 6151 4 93 20 60
darmstadt@the-urban-institute.de

Office München

c/o GATE, Lichtenbergstr. 8
D- 85748 Garching bei München
T +49 (0) 89 54 84 20 95
muenchen@the-urban-institute.de

[ui!] Urban Software Institute - www.ui.city
[ui!] Urban Lighting Innovations - www.uli.city
[ui!] Urban Mobility Innovations - www.umi.city

[ui!]

All of your urban data

in real-time
transparent
finely scaleable
on one platform
always available at a glance



DIN Spec 91357 Reference
Architecture Model Open Urban
Platform (OUP)



Vom SMART CITY Forum mit DIN
erstellte Referenzarchitektur als
standardisiertes Rahmenwerk bei
öffentlichen Ausschreibungen für
Offene Urbane Datenplattformen.



info@UrbanPulse.de



0 61 51 / 4 93 20 60



INFOS UNTER:
www.UrbanPulse.de



SCAN MICH

[ui!] UrbanPulse

[CREATING BENEFITS]

50% of people already live in cities, yet consume 75% of the world's energy and are responsible for around 80% of global emissions.

A rethinking of consumption, resources and the environment is more important than ever.

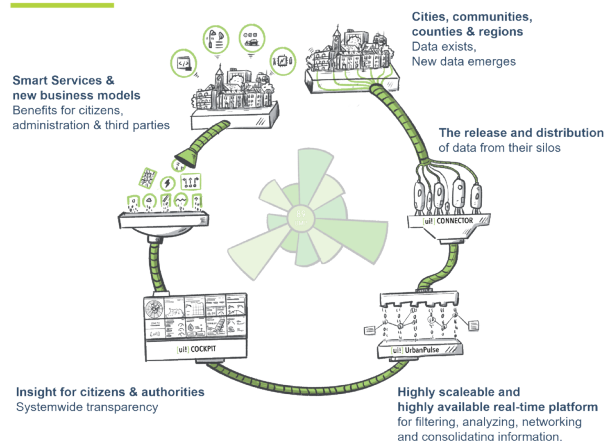
For this purpose a large number of different data is required, which then needs to be collected, processed, visualized and further used.

The [ui!] Group would like to support communities, cities, public utilities and regions on their way to SMART CITY / REGION and offers its longtime experience in this field.

We support you from the first idea, to the realization and are always at your side as a reliable and competent partner.

[ui!] UrbanPulse

Benefits for cities, communities, counties & regions



[PLATFORM AS A BASIS]

How can you promote digitalization in your community?

We support cities, communities, counties and regions in their efforts to collect, process and analyze all existing and anonymized urban data on a central data platform. As well as to make it available for new services as a benefit to cities, communities and utility companies.

These solutions are based on an open urban data platform - the [ui!] UrbanPulse. Here, all data from the various IT systems of a city will be fed into a variety of connectors in order to be used for new smart city services in real-time and offered as benefits for citizens.

UrbanPulse enables the transparent visualization of all information of a city and makes it available for further use. The data sovereignty always remains with the client on whose behalf the data is collected.

Thus, the platform not only provides integrated access to urban data, it also prevents the risk of data misuse.

[FAQ]

Who does the data belong to?

Data sovereignty and data jurisdiction lie with the respective cities or regions that collect it. They decide which data is passed on to which interested party, either free of charge or for a fee.

[ui!] UrbanPulse is Open³?

1. Open Source
2. Open APIs
3. Open Platform Standards

Can our city afford this?

The transfer of certain data to third parties may result in charges that are equivalent to the investment of an Open Urban Data Platform. However, [ui!] UrbanPulse will quickly pay for itself.

Integrate existing data?

There is a fast growing library of ready-to-use connectors of the common sensor system suppliers. You can develop further connectors yourself or let us develop them for you.

Who receives the source code?

In the event that we are no longer able to support you, the code belongs to the city or region.