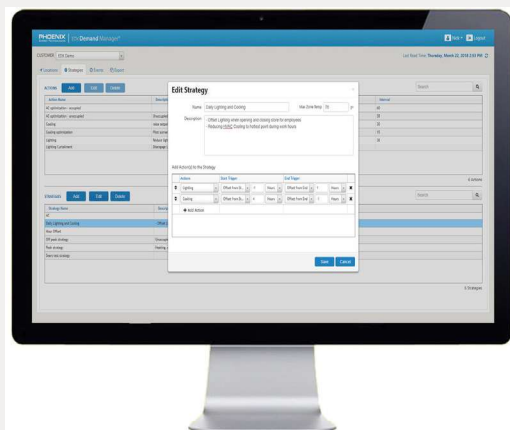






## EnterpriseDX® Demand Manager



### OVERVIEW

Demand-side activities are a company's best chance to control costs and reduce energy use. Demand Manager provides maximum opportunity to control and/or reduce energy usage by managing demand across many locations and multiple BAS types to meet your energy cost and load objectives without sacrificing customer comfort or installing additional hardware or meters.

### FEATURES

-  Multi-action strategies that automatically react to kW usage, zone temperature, and more
-  Works across multiple BAS and doesn't require a meter
-  Select strategies at the system or sub-system level
-  Automated DR Event response with CPower and other programs

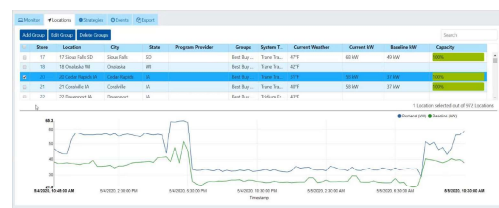
## DAY-TO-DAY DEMAND MANAGEMENT + DEMAND RESPONSE CAPABILITIES T

Many controls systems lack the capabilities to manage multiple cascading curtailment strategies, controlling many locations at once, or automating strategies such as load rolling. EnterpriseDX® Demand Manager puts you back in control. Automatically maximize your efficiency based on your objectives day by day or set-and-forget strategies to optimize for cost without sacrificing comfort.

## FINALLY TAKE BACK CONTROL

### VISIBILITY

Demand Manager allows you to see and sort your locations at a glance, with updates of current weather, baseline kW, and capacity every 5 minutes. View all your Demand Events in a single place, and slice and dice them by provider or time. Plus, build your own filtered reports to export the data you need.



### OPTIMIZATION

Use multiple triggers and actions to customize strategies across one or many stores or regions to load shave or shift without affecting customer comfort. With real-time updates every 5 minutes, you can fine-tune the system as much as you like. And, with automation, take more advantage of DR events.

### FLEXIBILITY

Demand Manager works across diverse control systems and works with or without a meter. Build your own location groups so you can control changes at the level YOU choose. Upload store lists, copy strategies, and export what you need for analysis.

Name	Type	Start	End	Status	Groups	Location	Target	Program/Prov.
Load Cycling Start	On/Off	4/20/2020 12:00 AM	5/15/2020 12:00 AM	Action		100 Main CA, 101 Main CA, 102 Main CA	75%	100 Main CA, 101 Main CA, 102 Main CA
Load Cycling End	On/Off	4/20/2020 12:00 AM	5/15/2020 12:00 AM	Action		100 Main CA, 101 Main CA, 102 Main CA	75%	100 Main CA, 101 Main CA, 102 Main CA
Load Cycling Start	On/Off	4/20/2020 12:00 AM	5/15/2020 12:00 AM	Action		100 Main CA, 101 Main CA, 102 Main CA	75%	100 Main CA, 101 Main CA, 102 Main CA
Load Cycling End	On/Off	4/20/2020 12:00 AM	5/15/2020 12:00 AM	Action		100 Main CA, 101 Main CA, 102 Main CA	75%	100 Main CA, 101 Main CA, 102 Main CA
Load Cycling Start	On/Off	4/20/2020 12:00 AM	5/15/2020 12:00 AM	Action		100 Main CA, 101 Main CA, 102 Main CA	75%	100 Main CA, 101 Main CA, 102 Main CA
Load Cycling End	On/Off	4/20/2020 12:00 AM	5/15/2020 12:00 AM	Action		100 Main CA, 101 Main CA, 102 Main CA	75%	100 Main CA, 101 Main CA, 102 Main CA
Load Cycling Start	On/Off	4/20/2020 12:00 AM	5/15/2020 12:00 AM	Action		100 Main CA, 101 Main CA, 102 Main CA	75%	100 Main CA, 101 Main CA, 102 Main CA
Load Cycling End	On/Off	4/20/2020 12:00 AM	5/15/2020 12:00 AM	Action		100 Main CA, 101 Main CA, 102 Main CA	75%	100 Main CA, 101 Main CA, 102 Main CA

## Manage Demand, or Demand Events with Demand Manager



Incentive checks are nice, but Demand Manager helps with year-round demand management AND demand response

### DEMAND RESPONSE



Automatically react to called events from your aggregator or provider



Set strategies that react to kW shedding, so the next one starts if the goal isn't going to be met



Watch events in near real-time with 5 minute interval reporting



Export data to support your M&V needs

OR

### DEMAND MANAGEMENT



Pre-build strategies that cascade across locations based on your zone temperatures, weather and more.



Create strategies at the sub-class level to be even more creative at saving energy without affecting customers or staff.



Create reports across EnterpriseDX® demonstrating demand reduction across high-cost and regulated locations. Look like a hero.

Monitor

Locations

Strategies

Events

Export

05/04/2020

Curbside Plus 74dH

All Timezones

All Locations

Search

Export

Location	System Type	Location	Unit	Point	Event	Command Time	Value	Revert Time	Value	Status
7 Roseville MN	Trane Tracer Su...	20 Cedar Rapids...	RTU 01	Occupied Coolin...	Curbside Plus 74...	11:45 AM	74	5:00 PM	75	Complete
10 Maplewood ...	Trane Tracer Su...	20 Cedar Rapids...	RTU 02	Occupied Coolin...	Curbside Plus 74...	11:45 AM	74	5:00 PM	75	Complete
11 Blaine MN	Trane Tracer Su...	20 Cedar Rapids...	RTU 03	Occupied Coolin...	Curbside Plus 74...	11:45 AM	74	5:00 PM	75	Complete
14 Rochester MN	Trane Tracer Su...	20 Cedar Rapids...	RTU 05	Occupied Coolin...	Curbside Plus 74...	11:45 AM	74	5:00 PM	75	Complete
15 Oakdale MN	Trane Tracer Su...	20 Cedar Rapids...	RTU 06	Occupied Coolin...	Curbside Plus 74...	11:45 AM	74	5:00 PM	75	Complete
17 Sioux Falls SD	Trane Tracer Su...	20 Cedar Rapids...	RTU 07	Occupied Coolin...	Curbside Plus 74...	11:45 AM	74	5:00 PM	75	Complete
18 Onalaska WI	Trane Tracer Su...	20 Cedar Rapids...	RTU 08	Occupied Coolin...	Curbside Plus 74...	11:45 AM	74	5:00 PM	75	Complete
20 Cedar Rapids	Trane Tracer Su...	20 Cedar Rapids...	RTU 11 Install Bay	Occupied Coolin...	Curbside Plus 74...	11:45 AM	74	5:00 PM	75	Complete
21 Coralville IA	Trane Tracer Su...									
26 Wauwatosa WI	Trane Tracer Su...									
29 Racine WI	Trane Tracer Su...									
44 Brookfield WI	Trane Tracer Su...									
46 Champaign IL	Trane Tracer Su...									
59 Madison WI	Trane Tracer Su...									

73 Locations

8 Commands