

EDSBY ADVANCED ANALYTICS

Big picture K-12 academic insights from live gradebook, standardized test results, LMS usage and other district data

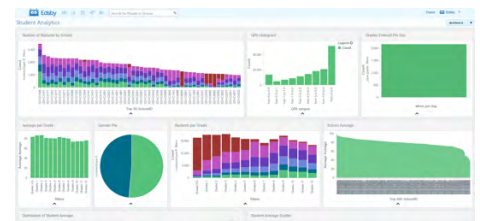
In our school district, which neighborhoods have the best attendance rates? Which schools are performing most effectively? Which parts of the curriculum are students struggling with the most? How are our ninth graders performing in math & science? Are girls doing better than boys?

Questions like these have traditionally been hard for K-12 school districts to answer. Data warehouses are expensive and hard to configure. And even the best such systems only reflect historic data, not current data.

Edsby's breakthrough learning analytics capabilities enable educators to find trends in achievement data and identify at-risk students in real time across an individual school, group of schools or whole school district, depending on the user's role and permissions. Powerful drill-down capabilities enable users to find exactly what they seek.

Remarkable new insights are now possible for K-12 districts, in real time, based on live, up-to-the-second data—regardless whether a district uses the Edsby platform for learning management.

When combined with the powerful data aggregation capabilities of Edsby, insight into academic performance across regions, or whole countries, becomes possible.



Edsby learning analytics, 215-school district where more than 1.3 million system and learning datapoints are captured every school day.

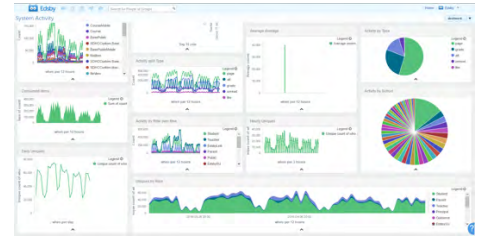
“Edsby analytics are helping us understand differences and similarities in schools across our district. Student risk analyses, geographic distributions of student achievement and more could ultimately help us see where to optimize, and these real-time graphs and charts can be shared among district or even school level administrators.”

— Gregory Hart, Manager of Web Communications,
Hillsborough County Public Schools
DISTRICT-WIDE USE OF EDSBY, 200,000 STUDENTS



Learning analytics and system analytics

Many edtech systems offer basic analytics around system usage, i.e. *system* analytics. Edsby offers system analytics as well as *learning* analytics, which yield insight into student achievement based on data from Edsby and elsewhere. Learning analytics are intended to allow districts to discern patterns in academic results, and the identification of at-risk students becomes faster and more accurate.



Edsby system analytics, 215-school district where more than 1.3 million system and learning datapoints are captured every school day.



Dynamic insights, not a rearward-looking data warehouse

Academic data must be imported periodically in conventional data warehouse approaches. By definition, it is therefore historical information. Edsby can offer real-time insight using live, up-to-the-minute achievement and other data.

"I'm impressed. Edsby's new learning analytics can show us trends in our live data instead of having to wait for uploads at fixed times through the year. This could speed our ability to intervene with students at risk and even improve instruction where necessary."

*— John Howitt, Superintendent, Staffing and IT,
Greater Essex District School Board
DISTRICT-WIDE USE OF EDSBY, 34,000 STUDENTS*



Leverages Edsby permissions system

Standalone business intelligence systems often only offer insight to a select few data specialists in a district, through whom data requests must be funneled. Edsby analytics use the comprehensive Edsby permissions system, synchronized with the district. Teachers can be given access, seeing information only on students they currently teach. Principals and office staff are restricted to data relevant to their school. District level officials can access information across the whole district.



Can include third party data

The learning record store at the heart of Edsby's advanced analytics can include data from the Edsby learning management system (LMS) and/or data from other LMSes, gradebooks or any other sources such as EQAO, PM Benchmarks, standardized tests, CASI, etc. External data, whether it lives in SQL tables or CSV files or other formats, can be leveraged for the most complete picture possible.

To learn more about Edsby advanced analytics, see a demonstration and learn how you could deploy it at your school district, contact us.



1 (877) 337-0070



edsby@edsby.com



@edsby



facebook.com/Edsby