



# Mobile solutions for deviation handling and claims

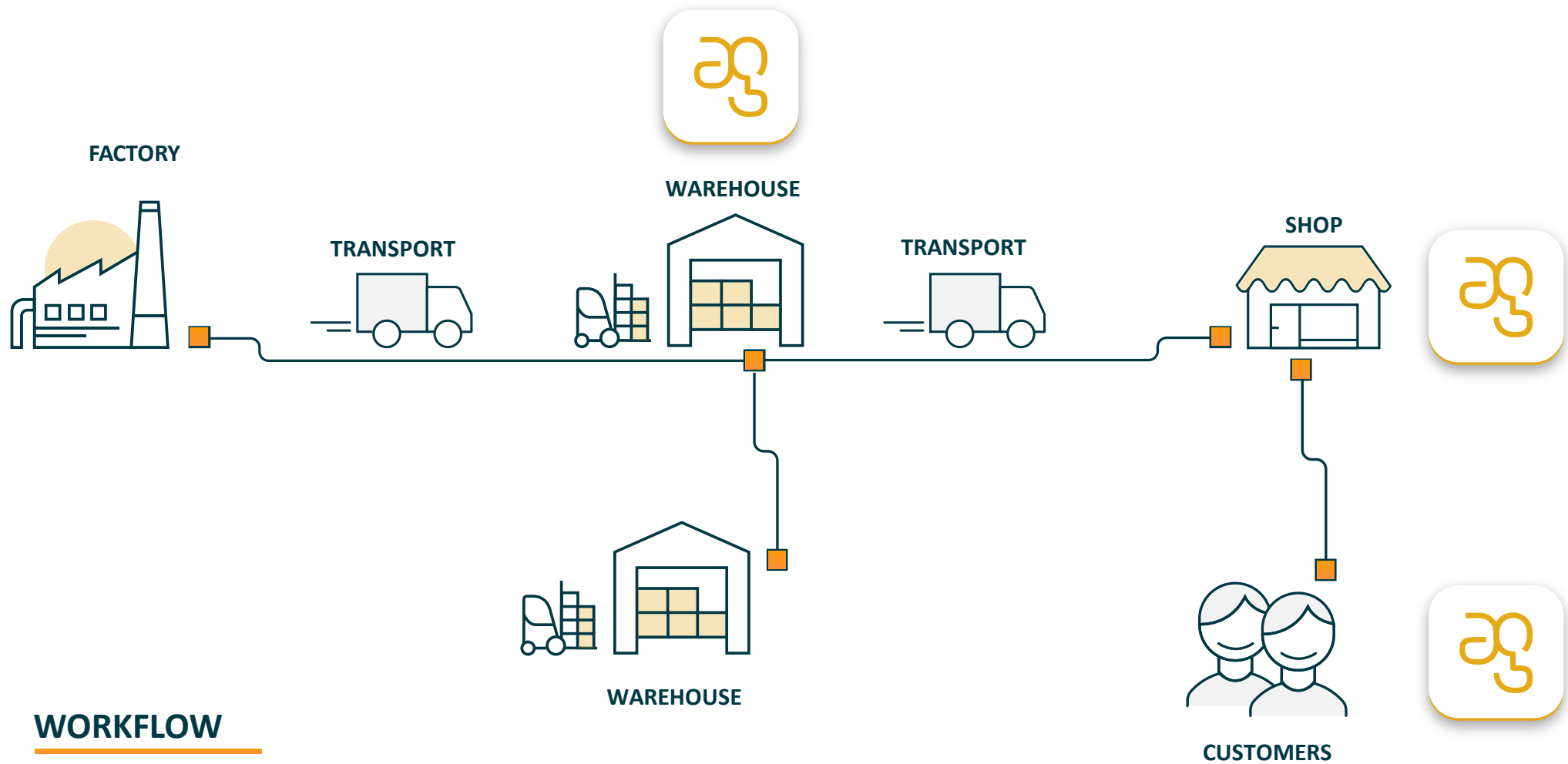
[www.agrippa.no](http://www.agrippa.no)



# Agrippa Solutions Firma Profil

---

- Tønsberg basert Programvarefirma
- Etablert i 2013 av Christian Svendsen som fortsatt er eier og Utviklingssjef
- 21 ansatte i Norge og Polen
- Retail/Logistikk/IoT som fokusområder.
- Leverer kostnadseffektiv løsning for avvikshåndtering og forbedring i logistikk-kjeder.
- Noen av våre kunder er ASKO, Haugen-Gruppen, Elektroskandia, Plantasjen, Europris mm.



## Powerful core features included in all solutions:



Mobile data capture



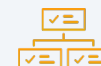
Issue management



Task calendar



Contact register



Issue consolidation



Status overview  
And dashboard



Checklist and control  
points



Access to procedure  
description



Process designer



Excel reporting



Experience-based  
process templates



Automatic issue  
assignment



Role and rights  
management

# Non-conformance reporting for large warehouse wholesalers.



Transport



Complaints



Receipt



Analyse

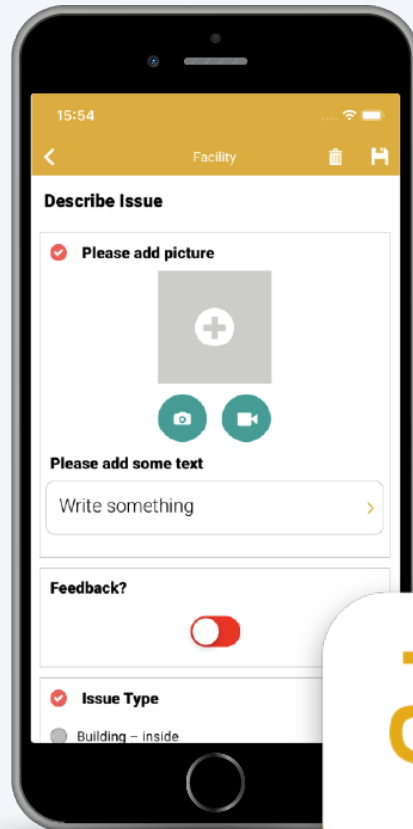


HMS



Truck control





DEVIATION HANDLING

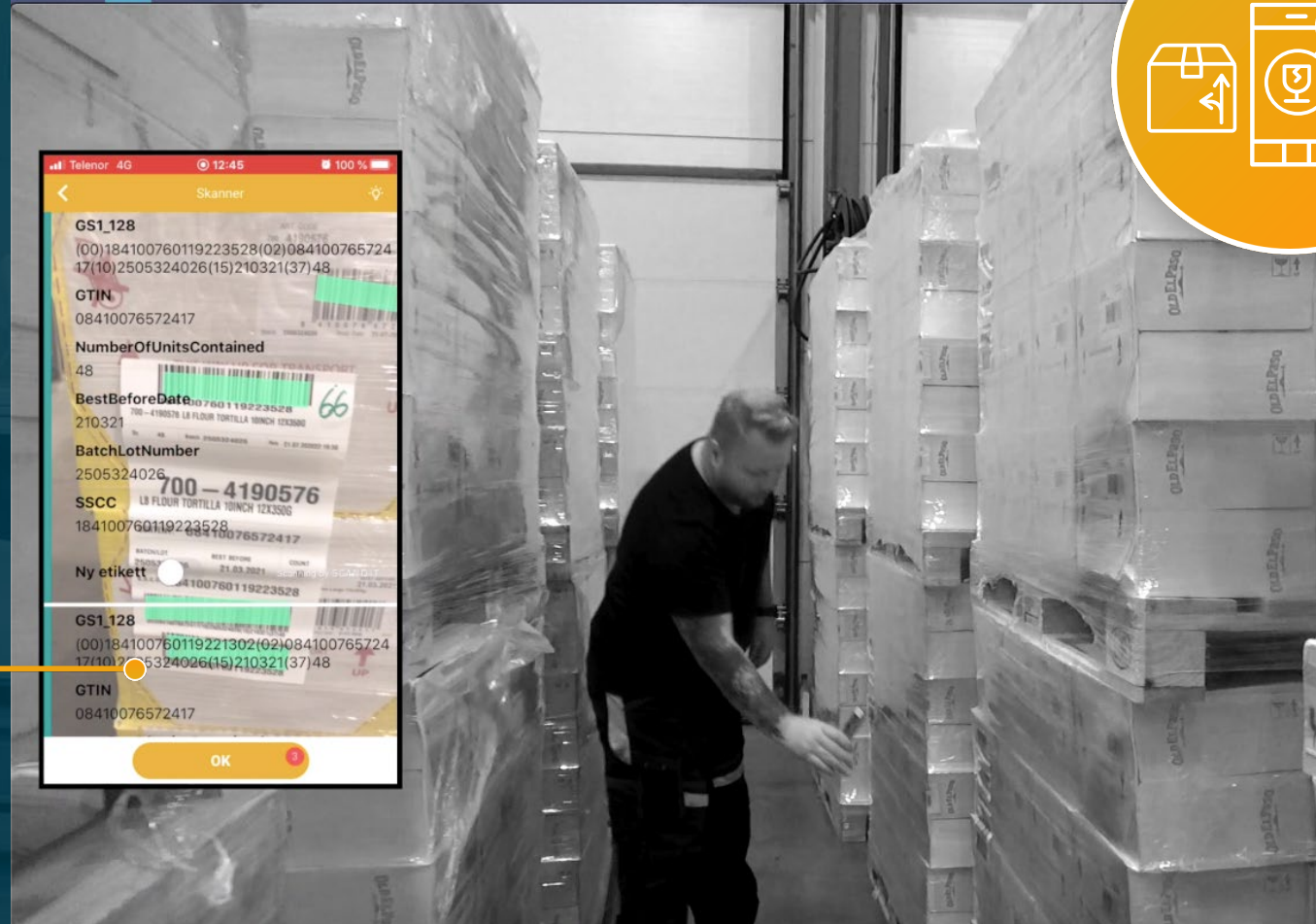


KPI

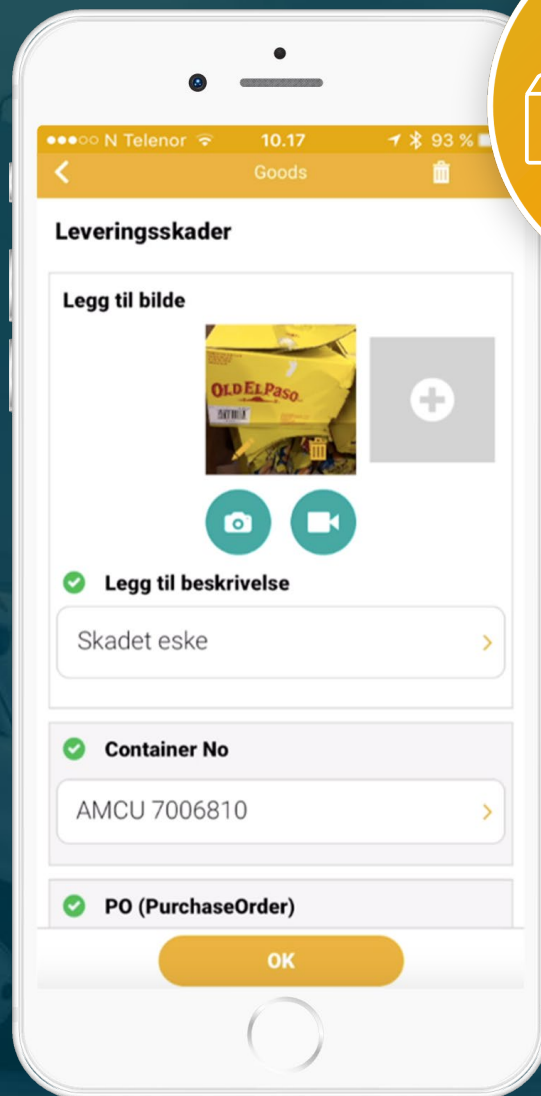


CLAIMS AND MODULES

# Goods receipt using **Agrippa** Improve app



# Register deviation during goods receipt



The image shows a white smartphone displaying a mobile application for goods receipt. The status bar at the top shows 'N Telenor', signal strength, time '10.17', and battery '93 %'. The app's header is orange with a back arrow, the word 'Goods', and a trash icon. The main title is 'Leveringsskader'. Below it is a section 'Legg til bilde' (Add image) containing a photo of a damaged yellow box labeled 'OLD EL PASO' and a grey square with a white plus sign. Underneath are two circular icons: a camera and a video camera. The next section is 'Legg til beskrivelse' (Add description), marked with a green checkmark, containing a text input field with 'Skadet eske' and a right arrow. Below that is 'Container No', also marked with a green checkmark, with an input field containing 'AMCU 7006810' and a right arrow. The final section is 'PO (PurchaseOrder)', marked with a green checkmark, with an empty input field. At the bottom is an orange 'OK' button.

N Telenor 10.17 93 %

Goods

**Leveringsskader**

Legg til bilde

OLD EL PASO

Legg til beskrivelse

Skadet eske

Container No

AMCU 7006810

PO (PurchaseOrder)

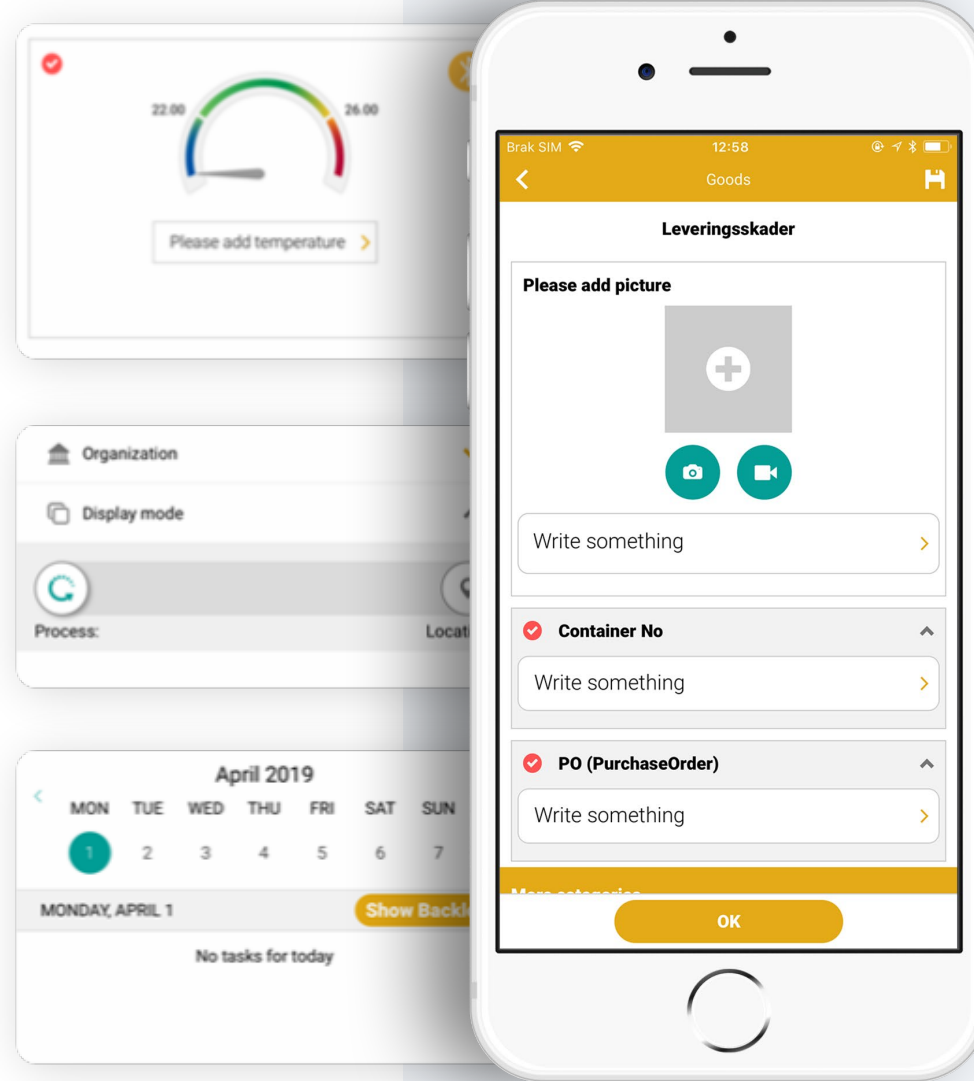
OK





# Agrippa Improve Mobile app

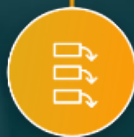
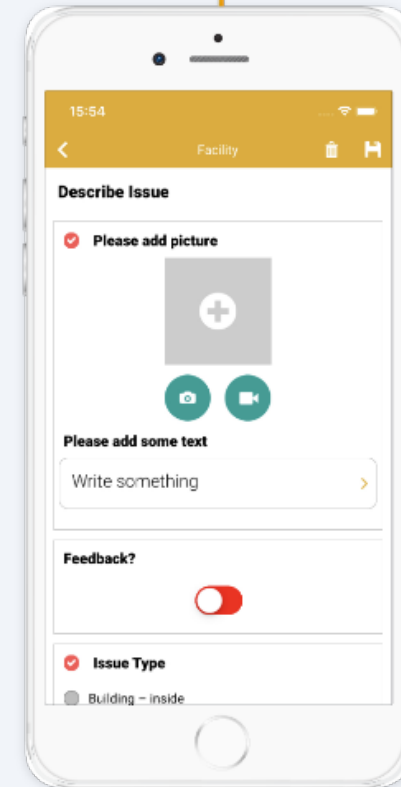
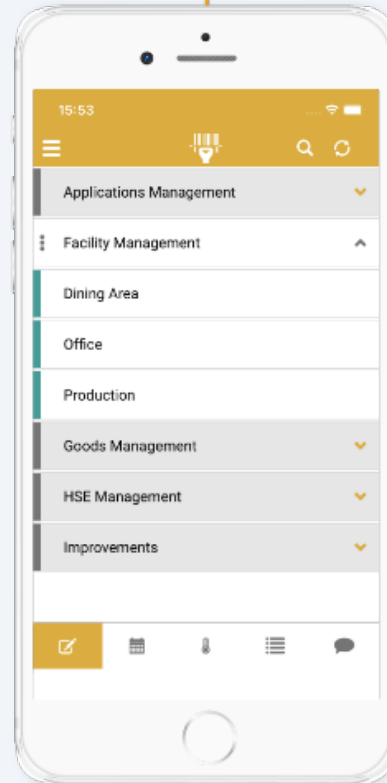
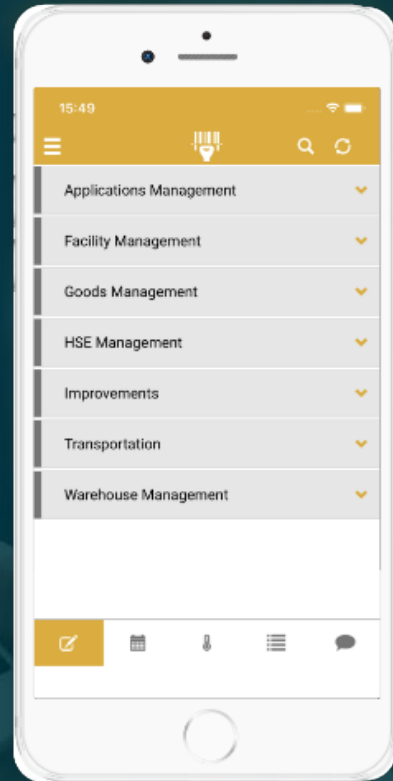
---



## Location



## Deatails



## Process

# Process designer

Eksisterende elementer

Maler

Steder

Lokasjoner

Prosesser

Objekter

Spørsmål

Kategorier

Søk på navn

Q

+ Legg til

001 Mobil enhet

002 O2-Skjerm

003 Deksel

004 Headset

005 Ledninger & koblinger

006 Antenne

007 Printerhode

008 Tastatur/taster/display

009 Etikett

010 Batteri

Prosesser

✓ PROSESSER

✓ OBJEKTER

✓ SPØRSMÅL

✓ KATEGORIER

Søk på navn

C

System

PROSESS

Truck

PROSESS

Utlast

PROSESS

Varemottak

PROSESS

Brekkasje

DEL-PROSESS

Feil i henhold til leveringsinstruks

DEL-PROSESS

HMS - Varemottak

DEL-PROSESS

Programvare

DEL-PROSESS

Teknisk - Truck/Reol/Bygg

DEL-PROSESS

Utstyr

DEL-PROSESS

Ønskede forbedringer for logistikk

DEL-PROSESS

Vernerunde

DEL-PROSESS

HBV

LOKASJON

KB

LOKASJON

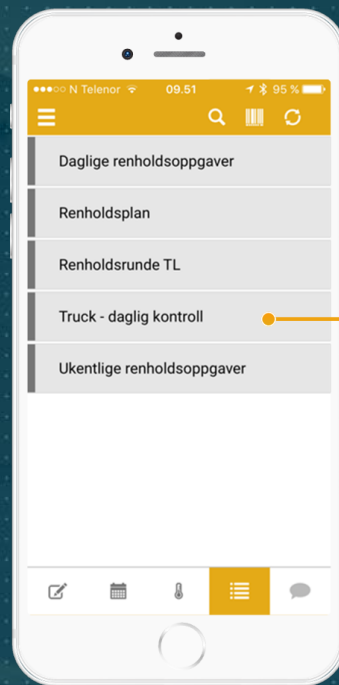
Logistikk Test

LOKASJON



# Checklist control

- Routines described
- Receipt for completed routines per object
- Truck
- Fire extinguisher
- Location
- Deviation handling is generated automatically
- Supports QR codes



Leakage control

Breaks ok?

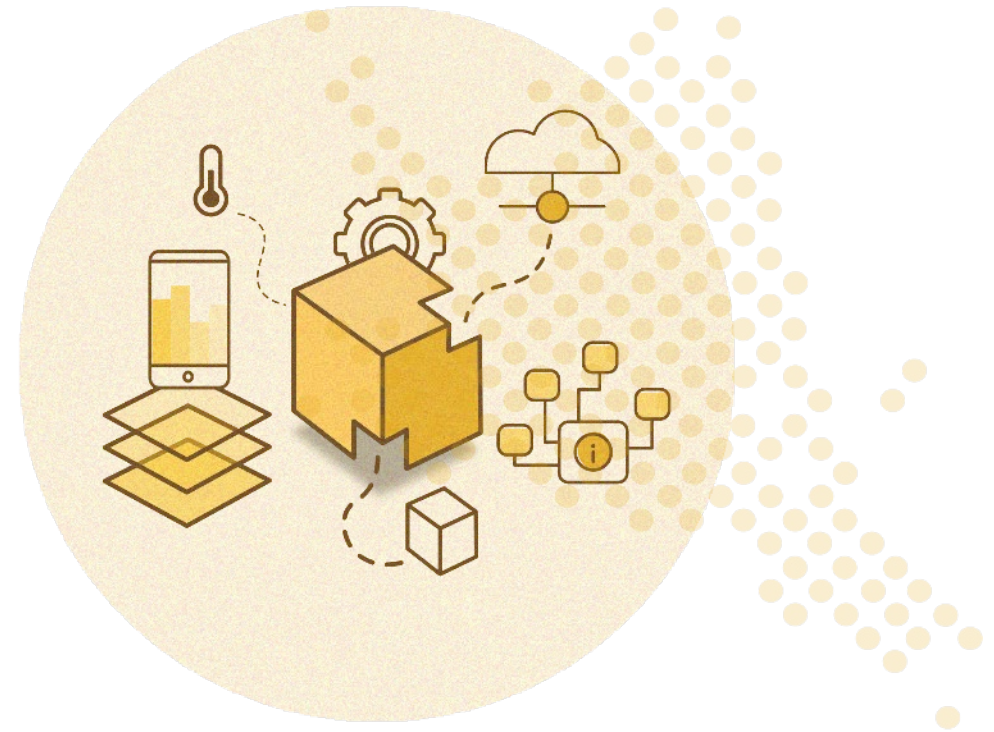
Error message ok?

A white dialog box titled 'Error message ok?'. It contains a red checkmark icon and the text 'Please add picture' above a grey square with a white plus sign. Below this are two circular icons: a camera and a video camera. Underneath is the text 'Please add some text' followed by a text input field containing 'Write something' and a right-pointing arrow. At the bottom are two large circular buttons: one with a white checkmark on an orange background and one with a white 'X' on an orange background.



## agrippa **Connect**

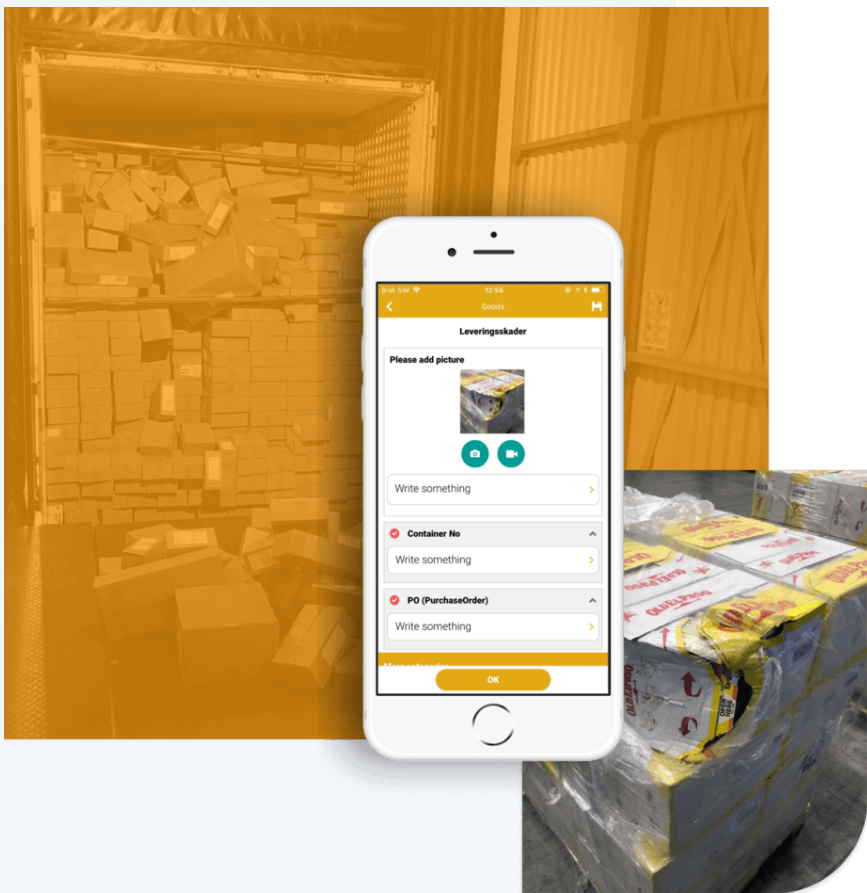
Agrippa Improvements often integrate with other established solutions and business information flows. There may be an employee, trade item and customer information, or verification of a receiving party related to a purchase order. The service includes both batch and API integration methods. Agrippa Connect is the generic term for services that are set up for integration and data exchange with the customers other systems. There is a monthly fee for each integration (of a system's service) which covers ongoing maintenance and support.



# agrisippa **Agrisippa Insight**

A function to extract and graphically view a current KPI that can be distributed by other solutions or posted on information screens in an operation.





## agrippa **Claims**

This service links the cost to the various measures and subcategories to those where a non-conformance has been registered. The non-conformance are grouped together by the vendor, customer, or shipping agent. The Claims module performs compensation calculations based on customer-specific rule sets. There is advanced support for exception handling in the calculation models. The module produces drafts of claims both in PDF and as electronic messages for data exchange with API.

# Claims module

Kladd

Under arbeid

Lukket

Type:

Supplier Claim

Group

--All--

Eksport

Ny

Rediger

Tøm filtre

<input type="checkbox"/>	ID	Opprettet dato	Sekundær status	Sub status	Price	Currency	Opprettet av	Assigned to	Lev.nr	Leverandørnavn	Fra dato	Til dato
	<div>Filter</div>	<div>Fra</div> <div>Til</div>					<div>Filter</div>	<div>Filter</div>	<div>Filter</div>	<div>Filter</div>	<div>Fra</div> <div>Til</div>	<div>Fra</div> <div>Til</div>
<input type="checkbox"/>	29792	05.10.2020					Olav Martin Udness	Elvind Pettersen	8635	GRONN INDUSTRI AS (N...	2020-09-27 00:00	2020-10-03 00:00
<input type="checkbox"/>	26945	14.07.2020	Registrert		15 000	NOK	Laila Richard Nilsen	Magnus Velgaard Nilsen	8498	MARS NORGE AS	2020-07-01 00:00	2020-07-14 00:00
<input type="checkbox"/>	26943	10.07.2020	Lukket		10 500	NOK	Laila Richard Nilsen	Olav Martin Udness	8781	PATROL GROUP SPOLKA ...	2020-06-01 00:00	2020-06-30 00:00
<input type="checkbox"/>	26942	10.07.2020	Lukket		21 500	NOK	Christian Sæviestad	Olav Martin Udness	8635	GRONN INDUSTRI AS (N...	2020-05-01 00:00	2020-07-10 09:43
<input type="checkbox"/>	26841	17.06.2020	Under arbeid		99 000	NOK	Christian Sæviestad	Olav Martin Udness	8635	GRONN INDUSTRI AS (N...	2020-06-01 00:00	2020-06-17 14:17
<input type="checkbox"/>	26495	16.06.2020	Lukket	Cancelled	8 500	NOK					2020-06-01 00:00	2020-06-16 12:02
<input type="checkbox"/>	26494	16.06.2020	Lukket	Cancelled								
<input type="checkbox"/>	26493	16.06.2020	Lukket	Cancelled								

Insight: Claims Oversikt

New claim

Insight: Claims Oversikt

New claim

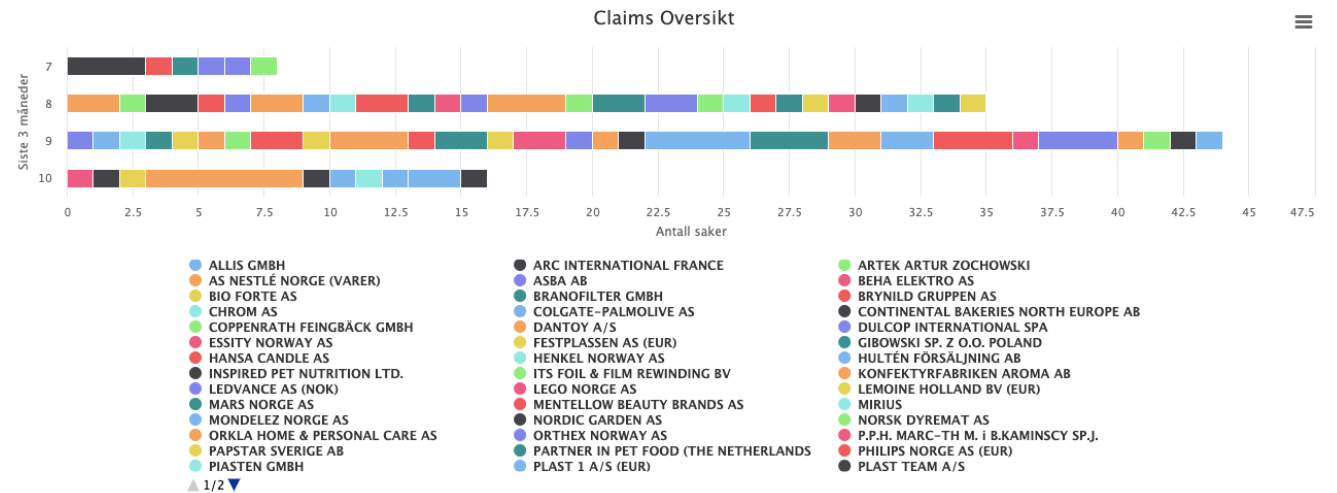
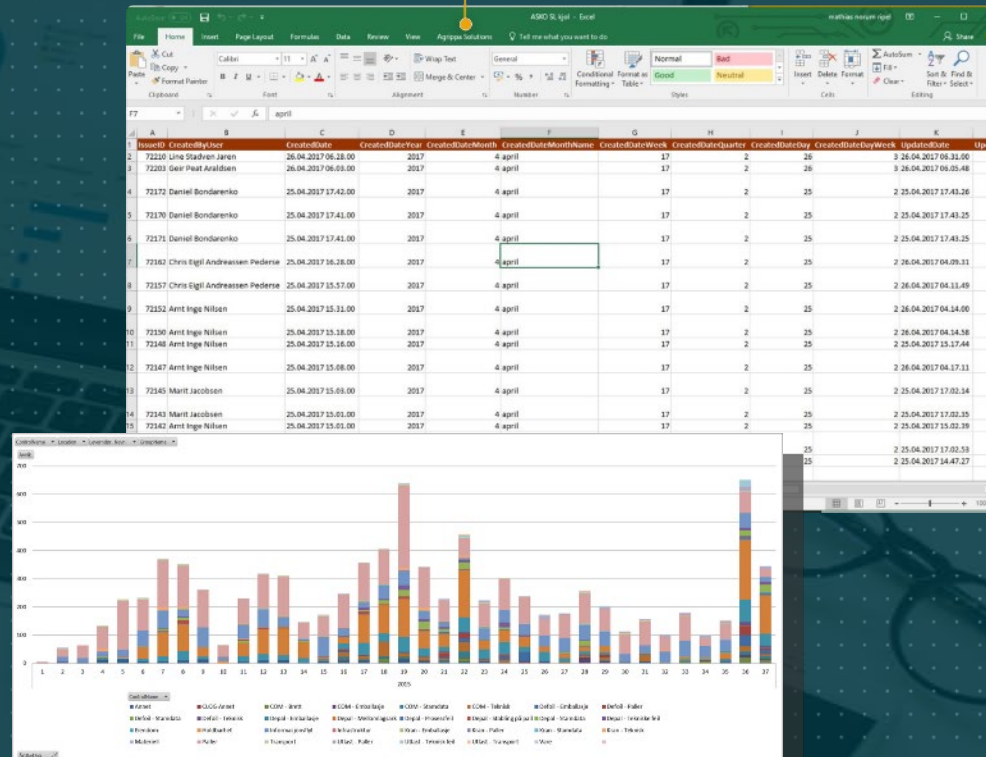


Chart data is refreshing every 15 minutes [refresh now](#)



# agrippa Analytics

Start-up costs include the required preparatory work with the customer as well as setting up the service to operate so that all relevant data from your company's registrations are continuously imported into a "plug-in" function in Excel. This allows unique flexible reporting to be accessed in all relevant presentations and analysis tools scattered across the organization based on Microsoft technology. The solution makes it very easy to reformat and export the relevant data to other formats and tools. The monthly fee covers ongoing maintenance and updating relative to Excel's functions, Office-365 and other platform relevant requirements.






## agrippa **Transport**

Agrippa Transport links the tracking number with relevant deadlines and conditions for each transport assignment. The service can be linked to the agreements and conditions that the company follows for both inbound and outbound transportation. Thus, nonconformance, trends and repetitive disputes will be traced in a very effective way for dialogue to retail claims, compensation or change in agreements.

## agrippa **Improve GPS**

Delivery of map coordinates links events to a specific location. A useful and relevant add-on function for effective use of the control solution at larger facilities. It is well suited for transport companies and service organizations that are spread over large territories.



Mine saker

Ikke påbegynt Under arbeid Fullført/lukket Avvist

Alle saker Gruppe: Teknisk avdeling / Bygg Visning:

Eksport Ny Rediger Innstillinger Tøm filtre

Excel PDF

Search...

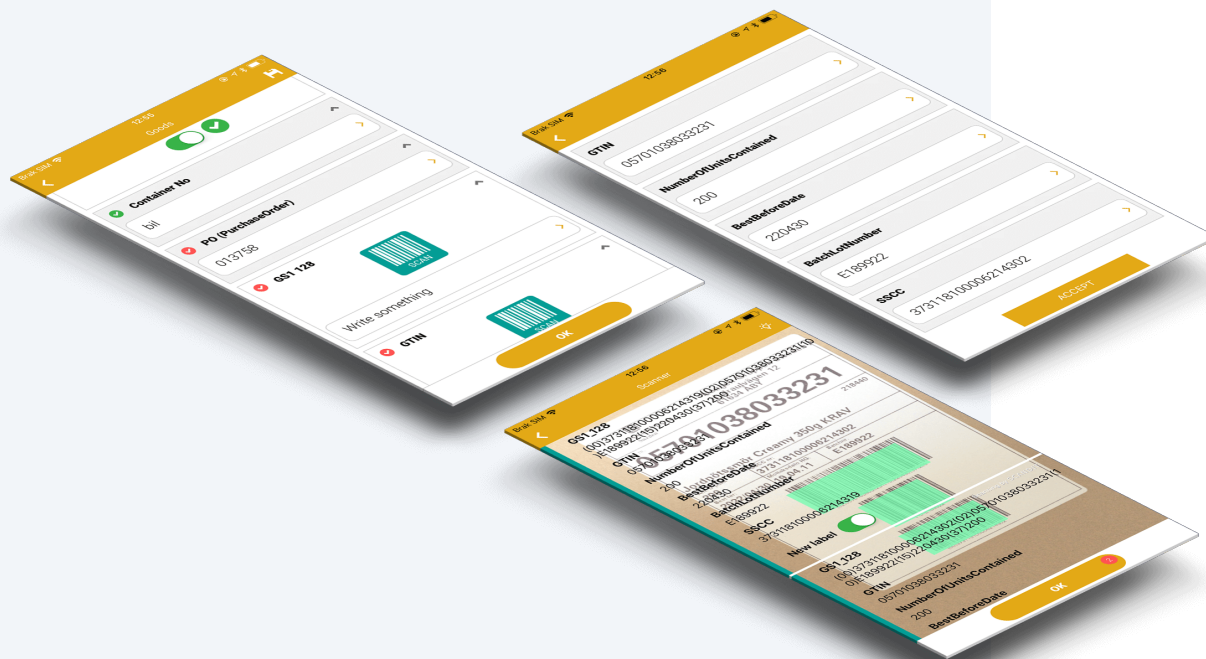
✓	✈	⚠	ID	Opprett...	Hovedprosess	Tildelt til	Opprettet av...	Lokasjon	Objekt	Del-proses...	Sakslogg
✓	✈	⚠	691617	14.03.2020	80 - Bygg-teknisk og...	Erik Leirstein	Runar Wathne	ASKO VESTFOLD TELEMA...	Gjennomført - ta bilde ved avvik	Tømming av sandfang ...	Arshjul Oppdatert... Saksehar Erik Leirstein
✓	✈		651607	05.02.2020	80 - Bygg-teknisk og...	Einar Solli	Einar Solli	ASKO VEST...	Gjennomført - bilde ved	Vask av kjølerø, ari...	Arshjul Oppdatert...

« Forrige side



# agrippa Inter-organisational Exchange

Links the cost to of various measures and subcategories to the organization were a nonconformance has been registered. The nonconformances are gathered by the vendor, customer or shipping agent. The Claims module calculates compensation based on customer-specific rule sets. The calculation models support advanced exception handling. The module produces drafts of claims both in PDF and as electronic messages.



## agrippa **Professional Scanner**

This software enhances use of a mobile camera for scanning of GS1-128 barcodes in logistics. Various components of the GS1-128 code are presented in relation to the parameters set up for each purchase. Agrippa's solution comes with standard scanner software at no charge. Agrippa Professional Scanner is recommended for users that frequently scan goods, and in food distribution companies. The price includes scanner on 30 units and additional units can be purchased per month. When the app is used, access to the scanner software is managed by role and rights.



# **Goods Receipt**

Receiving function which receives the purchase order online is directly connected to the scanning of inbound goods. It also verifies and registers any nonconformance on the goods, checking orderlines and volume against the order. The module supports the following functions:



The matrix scanning of labels GS1-128.



A discrete or continuous scanning mode.



Handling of nonconformance between the ordered goods and goods received.



Automatic reporting of goods is not available on purchasing.



Automatic registration of nonconformance when quantities deviate on a pallet.



Functionality to print new labels.



Notification if goods doesn't comply with the best-before-date requirements.



Scanning of SSCC against ASN

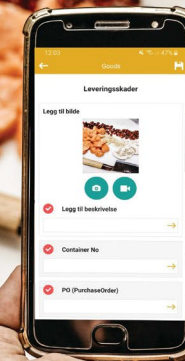
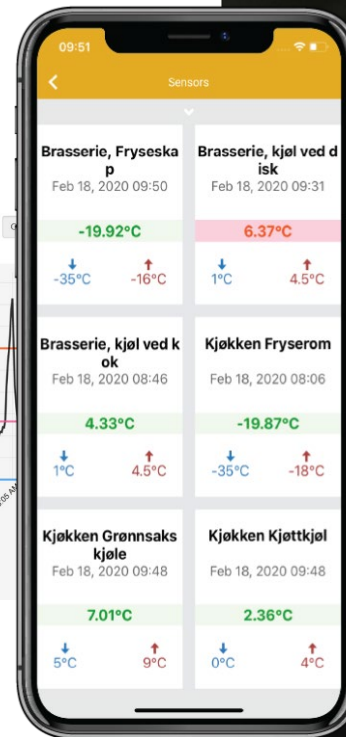
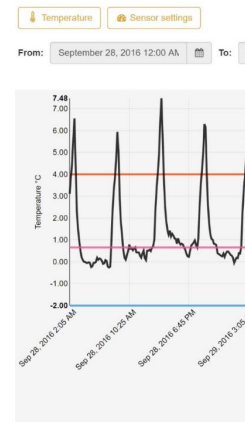


Support for the ZEBRA hand terminal with a laser or imager (as a supplement to a mobile camera)

This feature requires integration with customer`s business systems. Integration with MS Dynamics Ax is ready. The service includes the use of up to 30 units with the Professional Scanner.

# agrippa TempControl

TempControl is closely connected with Agrippa's temperature sensors that continuously provides temperature data. This software provides customer-friendly overviews of all sensors providing data. Deviations may be linked to Agrippa Improvement for further investigation. Agrippa TempControl can be delivered as an independent service regardless of improvements.

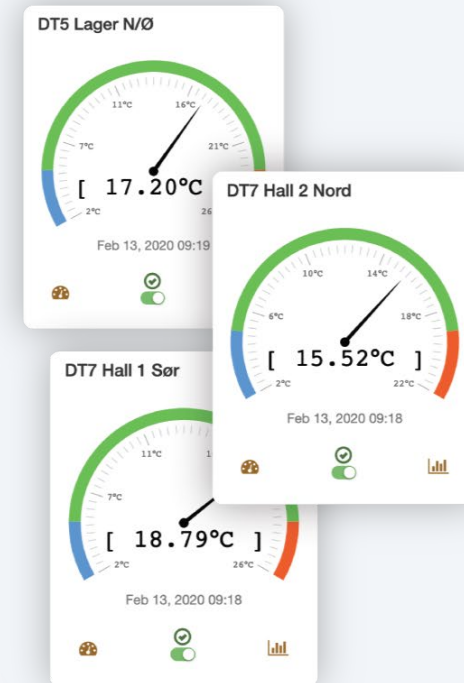
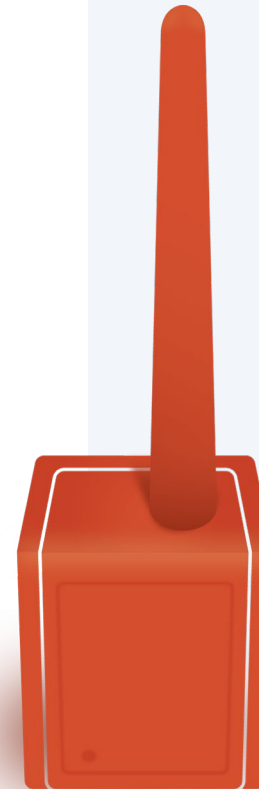


## Automatic temperature monitoring and warning!

We deliver automatic temperature monitoring adapted to your needs. The solution is built on our own IOT and ensures 24/7 monitoring of temperature sensitive areas, with warnings via SMS and e-mail, including access to temperature data.

We are specialists in temperature monitoring in both shops and restaurants. TempControl is a completely new solution for temperature monitoring and provides automatic monitoring of the temperature and humidity in cabinets for chilled or frozen food, freezer rooms and wine cabinets. Any out-of-range data registered is notified via SMS and E-mail to the responsible person. Our system is energy saving, reduces food waste and reduces costs related to manual measurements in accordance with IK food regulations.

- Wireless sensors with a life time of up to 10 years!
- Discrete alarm
- Access to real-time temperature from mobile/pc
- Complete log of temperatures
- Automatic non-conformance reports





## Embedded

In addition to the wireless sensors, we also have a solution for reading the temperature log directly from a single cooling/freezing unit. Our own temperature computer can be supplied with a dedicated network-card or implemented into the existing customer network, and simply plugged into the unit you wish to monitor. This will provide continuous monitoring, in the same way as the wireless sensors, with warnings and a full log of temperatures. We have long experience of interfacing the temperature computer with regulators from amongst others: Carel.

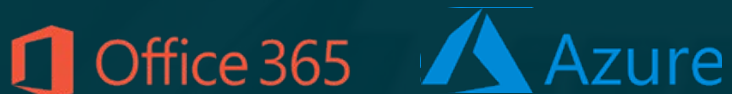
## BLE (Bluetooth)

We also have wireless sensors built on leading Bluetooth technology. The advantage of having this type of sensor is that you can read the temperature directly from your mobile, without going via a network or a server service. Bluetooth sensors are well suited for documenting temperatures during transport, it is also quick and easy to collect the electronic temperature receipts at the delivery point.



## agrippa **Azure AD Integration Office 365**

Agrippa develops its services based on Microsoft Technology and operates the solution in Azure Cloud Services. A crucial and important part of its prevalence and benefit is easy management and maintenance of the solution's users. The service can, therefore, be set up using the company's established AD and authentication solutions. For example, you can use the same authentication for Agrippa improvements which is used in your access to Office 365. The start-up cost includes a review and the establishment of the service, which is followed by a fixed monthly fee for maintenance and updates which must be current.



## agrippa **eMail Management**

The cost covers the establishment and operation of the service which manages the dialogue directly from processing in the nonconformance system to and from relevant e-mail addresses. This effectively provides processing and communication between the parties involved. At the same time, alerts for specific nonconformances can be copied as ongoing information to whoever is responsible. The solution supports the following email functions:

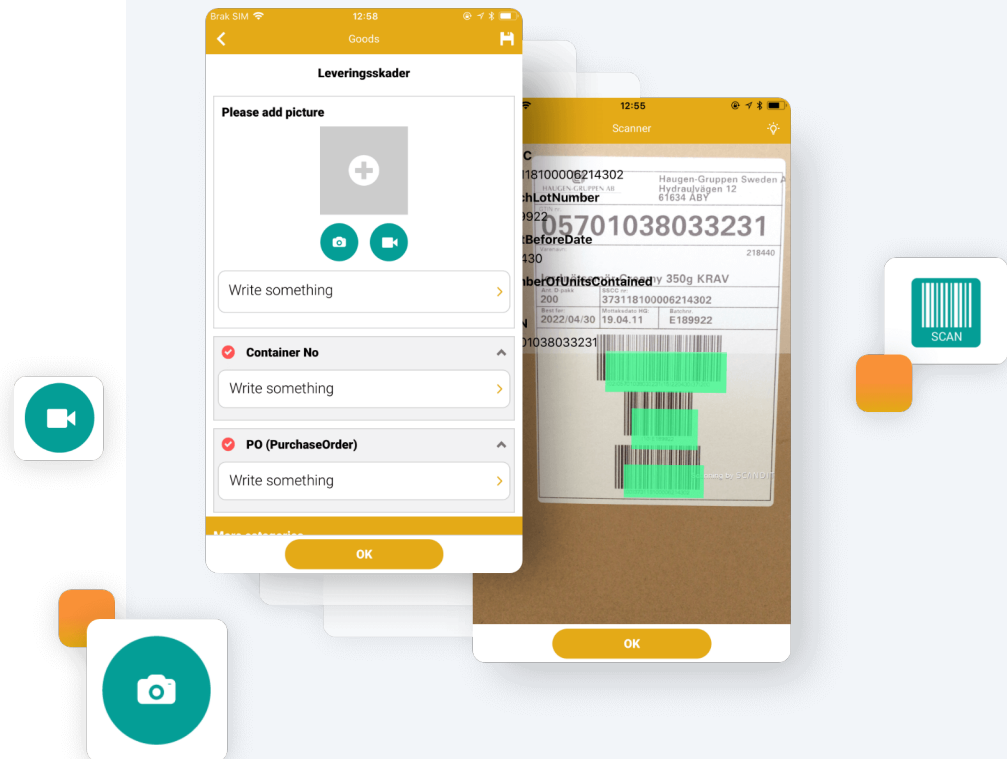
- The reporting of cases by email. The emails are placed in an incoming queue and can be effectively converted to cases for further processing.
- The recipient of the email that is sent from the case system can reply by email and the content of the incoming email automatically enters the case log.

# agrippa Quality

Documenting the quality of products and dispatches using photo and video!

An increasing number of customers use photo/video to document the condition of dispatched goods, or the quality of a finished product. This is a good method to ensure the quality of own production, and ensure that customers don't receive damaged goods. All you need is a camera and a memory card, and you can store pictures and videos for ever.

Agrippa Quality supports photo/video and connects the documentation with the order number (or other reference number you use for your dispatches). Using a picture and a few words from the mobile unit, the documented quality is stored on the transaction forever. The app also supports using barcodes or QR-code, in order to avoid manual errors when reading the reference.





# Get in touch

[info@agrippa.no](mailto:info@agrippa.no)

+47 33 38 22 22

[www.agrippa.no](http://www.agrippa.no)