

# sap<sup>2</sup>pience.

*Sapience* /sa.pjās/ [Old French, noun] the property of possessing or being able to possess wisdom

*App* /æp/ [Shortening of application, noun] set of software that the end user perceives as a single entity as a tool for a well-defined purpose

# the problem

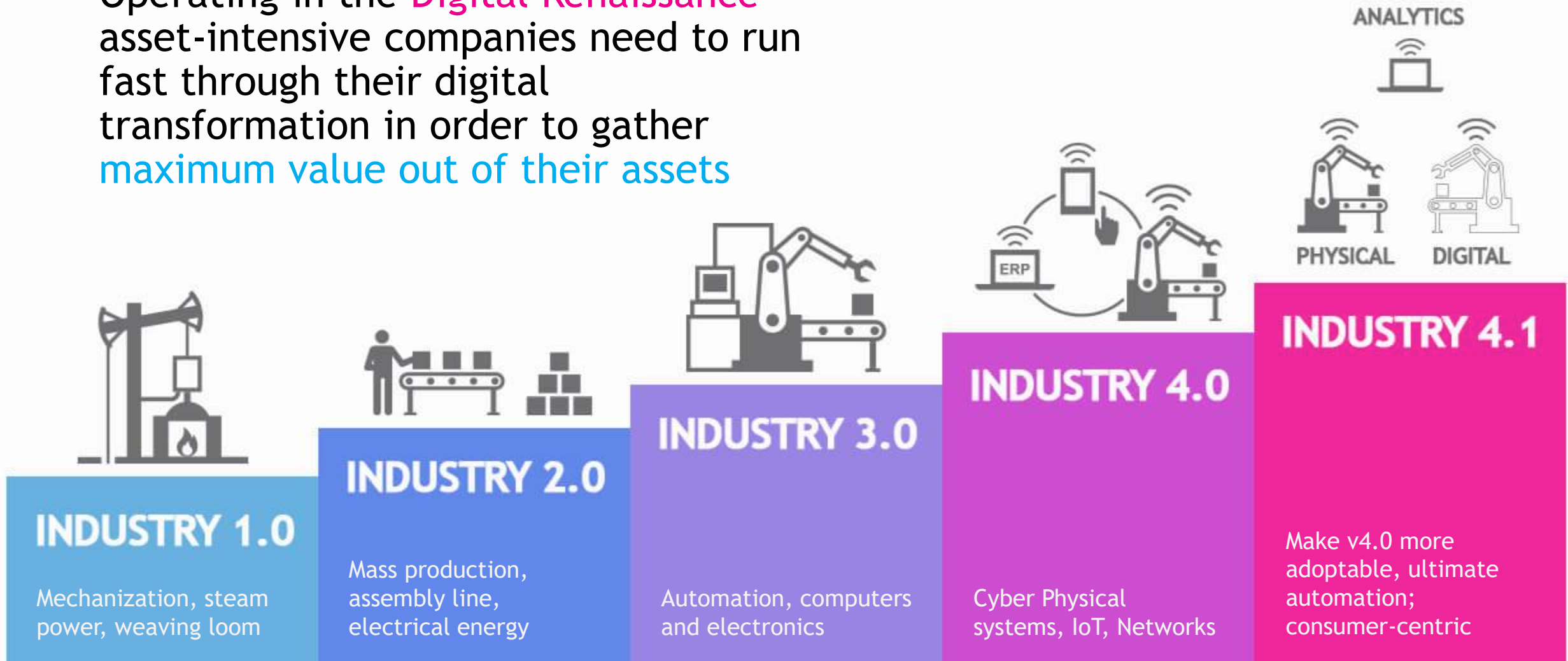
Asset-intensive industries face challenges in business aspects as cost, performance and risk management related to their assets, due to:

- Organizational alignment issues in both the slow-loop planning and the fast-loop execution and planning phases.
- risk and decision-making processes are patchy or inconsistent
- downtimes are coming as surprise, instead of being a part of a predictable and structured plan
- there are supply chain and operational cost inefficiencies
- the asset portfolio is aging, or subject to technology obsolescence
- existing data is still fragmented, out of date and/or not trusted, not enough, and not accessible anywhere at anytime



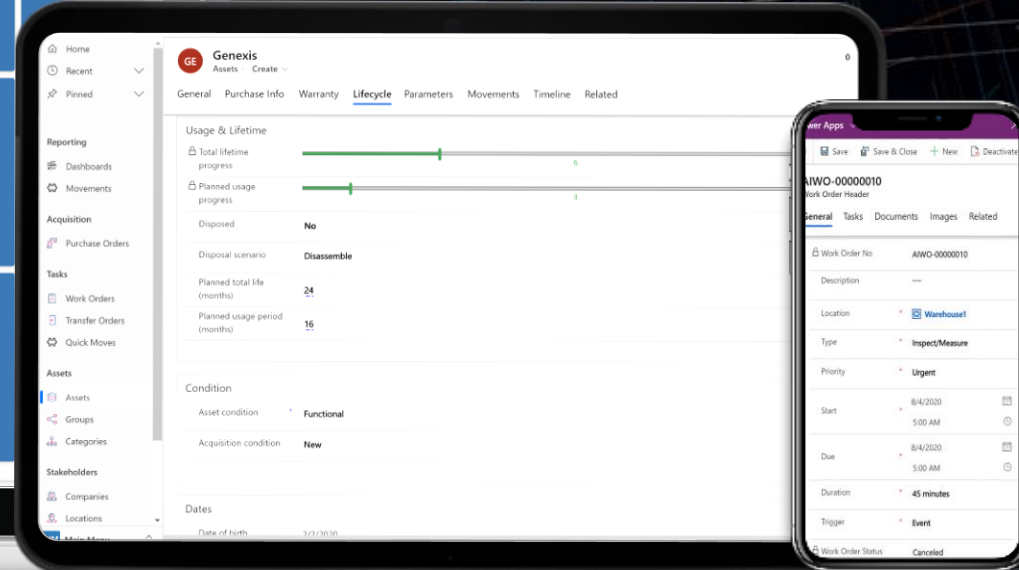
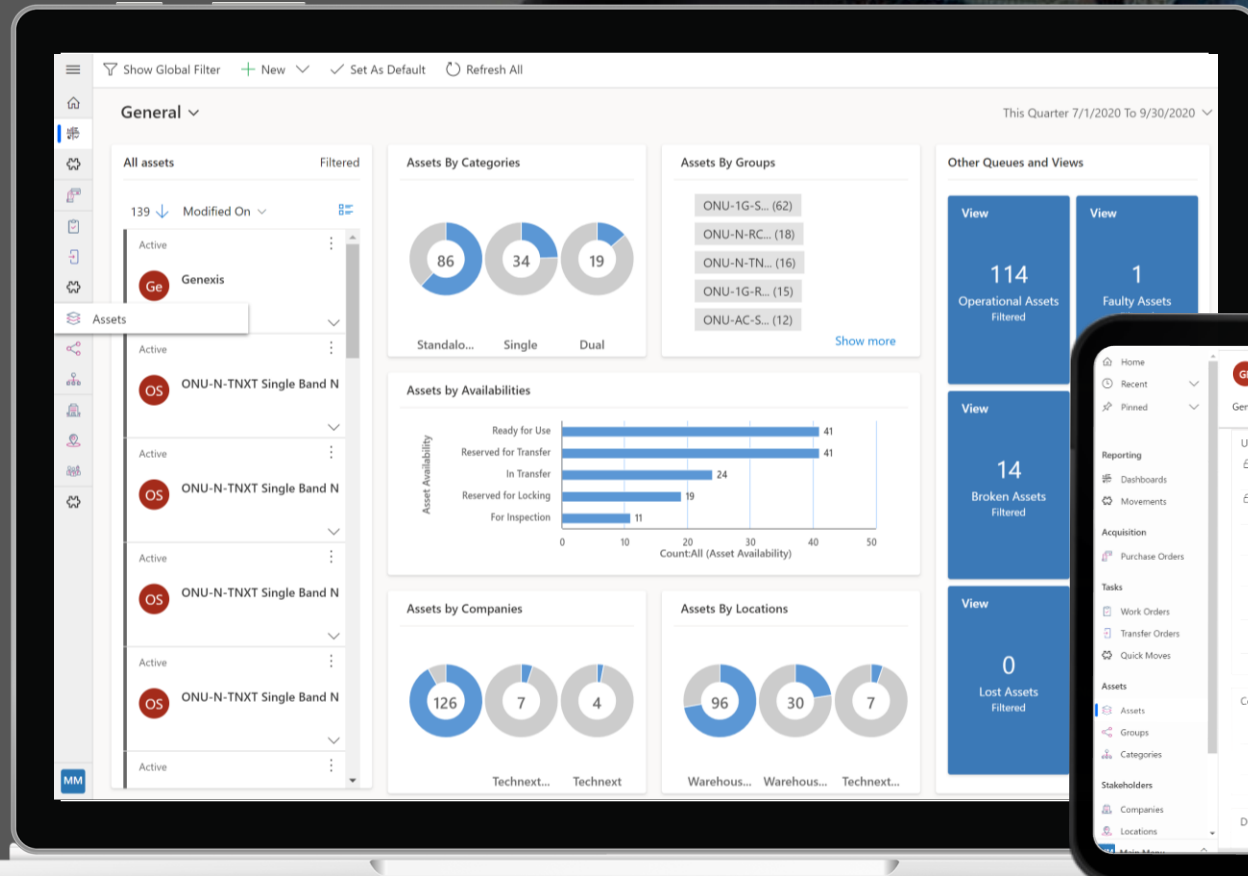
# the reality

Operating in the **Digital Renaissance**  
asset-intensive companies need to run  
fast through their digital  
transformation in order to gather  
**maximum value out of their assets**

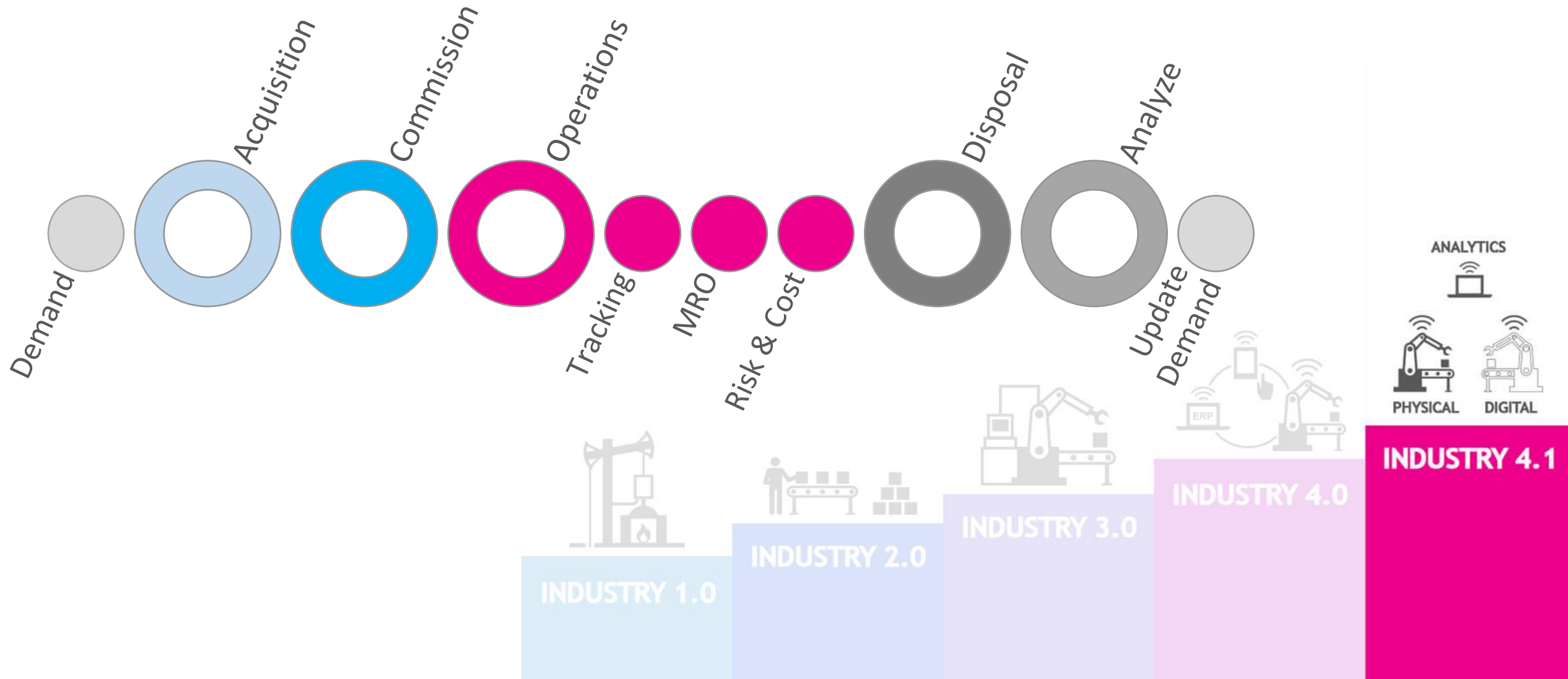


# asset insider: industry 4.1 solution

Sappience built Asset Insider:  
a low-code asset management solution applying  
Digital Twin concept and technologies,  
empowering asset-intensive industries to switch their  
operations, maintenance, and decision making  
from reactive to proactive and increase margins.



# end-to-end asset management





# capabilities & features



Asset & Twins Lifecycle



Stakeholders & Locations



Forecasting & SCM



Automated Tracking



Warranty & Insurance



Performance Monitoring



Predictive Maintenance



Service Management



Cost & Risk Management



Disposal & Retirement



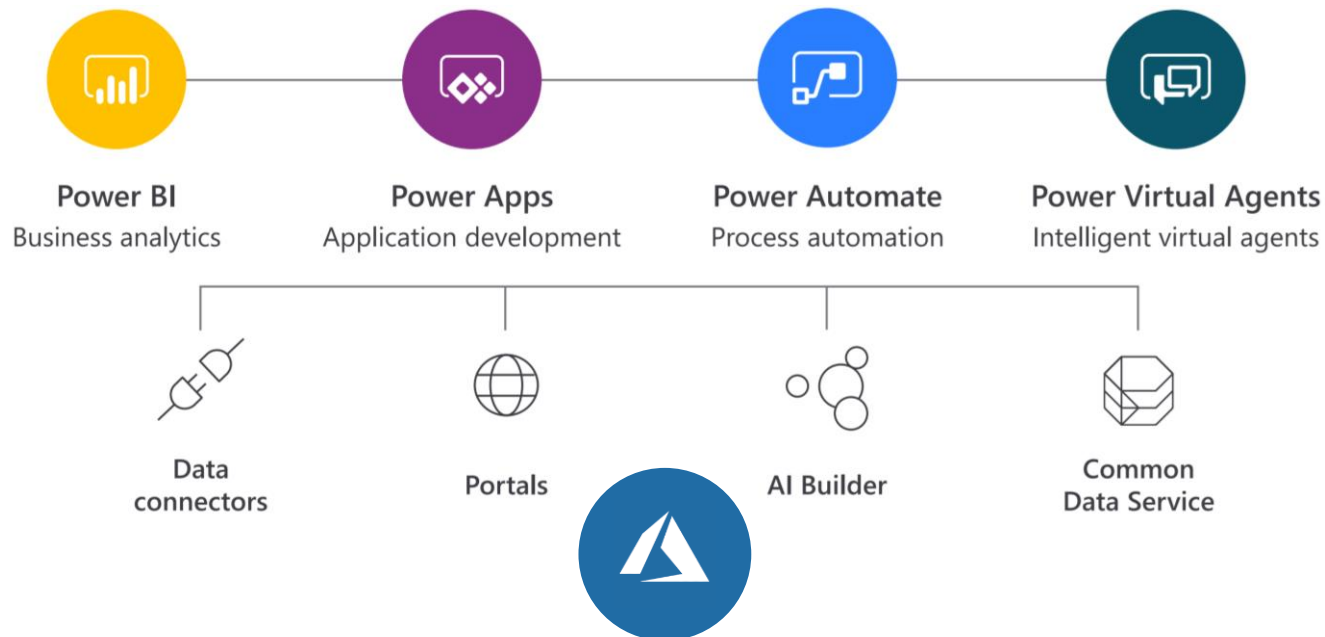
Mobility



Actionable Insights & KPIs

# built on Microsoft Power Platform

gateway to Industry 4.1



## Customer Benefits:

- Rapid customizations
- Lower barrier to entry
- 330+ predefined connectors
- Enterprise ready infrastructure & security
- Customer's business & IT users can build on top of Asset Insider or Power Platform
- No need for previous experience in programming and handling technology

# 10 examples for contribution in value chain



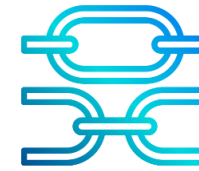
increased  
stakeholders'  
engagement



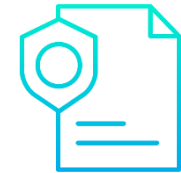
remote  
work  
enabled



reduced  
physical  
assets'  
downtime



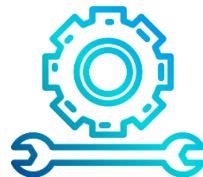
eliminate  
interrupted  
processes



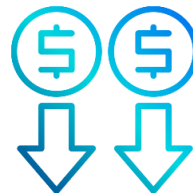
maximum  
HS&E  
compliance



extended lifecycle  
of the real-world  
objects



optimized  
maintenance  
cost and time



reduced supply  
& operational  
costs (5-10%)



data-based  
decision  
making



create more and  
new business  
opportunities



# value proposition for asset intensive industries



Manage assets in many different locations: production plants, logistics, on the field, anywhere



Empower technicians and mobile teams with the right tools and information



Get actionable data directly from the infrastructure, sub-stations, shop floor, and more



Improve the quality and reliability of the products & services provisioned to the customers



Include the asset management processes in the planning and forecasting; Align it with strategy



Extend the scope of the Supply Chain processes; Make them truly digital



Make the assets & infrastructure maintenance predictable with real-time data management

# benchmarks

1 - 6%



Increased  
Availability

10 - 30%



Reduction  
in safety  
risks

5 - 25%



Reduction  
in Costs

5 - 25%



Reduction in  
Reactive  
Maintenance

2 - 6x



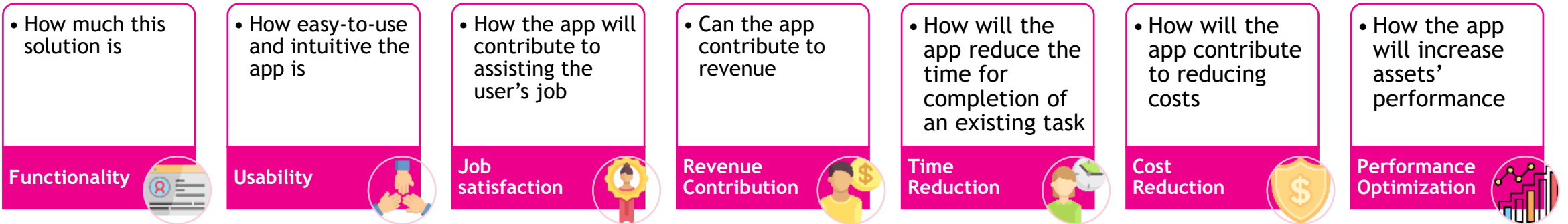
Faster  
Deployment



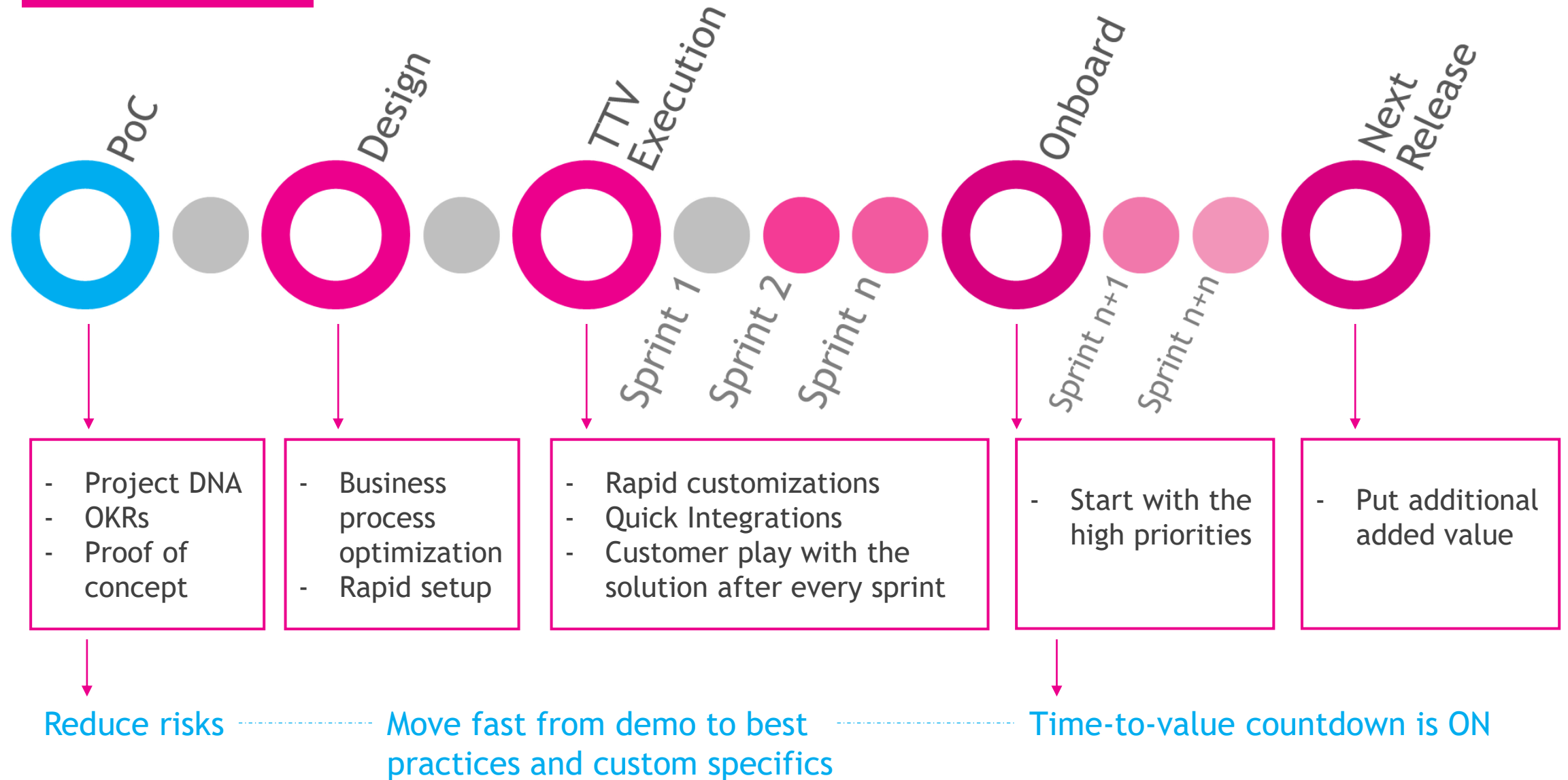
how we do it?

# onboard implementation methodology

First - start with defining the **Objective Key Results** we want to achieve:



# onboard

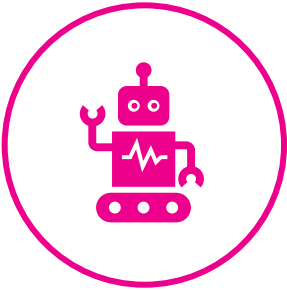






about sappience.





born in digital renaissance



12+ yrs. average foundation  
team experience



ISV and Preferred  
PowerApps partner



low-code pioneers



digital transformation  
accelerator



CSP Microsoft cloud  
solution provider

# industries we excel

focus on asset-intensive industries:



Utilities



Telco



Security  
Services



Cargo  
Transportation



Renewable  
Energy



Facility  
Management



Leasing &  
Rental



A modern, multi-story office building with a glass facade and a red 'ORBICO' sign on the roof. The building is set against a clear blue sky. In the foreground, there is a parking lot with a few cars and a green lawn. In the background, there are industrial buildings and a large mountain range under a hazy sky.

# ORBICO success story: Asset Management done in Easy and Efficient way

Orbico has implemented Asset Insider - the innovative low-code asset management app, to boost their processes related to full control of the assets' life-cycle.

Aiming to reduce risks, optimize costs, improve performance and embrace new technologies the company now refers to the modern app, based on Power Apps.

## Assets 360°

*"Now we can track our valuable assets in seconds and see their full timeline and life-cycle history"*

## Everything needed in one place

There is no need for different solutions for the asset management of IT equipment, Facility management, CMMS, etc. Everything is in the Insider.

## Cost Reduction

Optimize unnecessary maintenance expenditures, track everything that can generate significant expenses, decrease procurement costs.





Enter in Digital Twins World with Asset Insider

Telco | India | Top 10 ISP in the country |  
50000+ active assets in thousands of locations

### Ent-to-End Process Optimization

- full asset lifecycle management - from initial demand to disposal
- completely automated traceability and tracking of the assets via camera captures
- business logic app' driven decision making and processing
- integration with existing software ecosystem
- MRO management (Maintain, Repair, Operate)

### Benefits

- extended asset lifecycle and productivity
- produce more value out of the assets
- prevent loses
- decreased supply chain and maintenance costs

# contact us



find us at [www.sappience.digital](http://www.sappience.digital)



follow us on [LinkedIn](#)



call us at **+359 888 304 216**



mail us at [hi@sappience.digital](mailto:hi@sappience.digital)



have a digital coffee at [This Way](#), Sofia, Bulgaria

*Thank you!!!*