



Speaking of security:
Data and telemetry

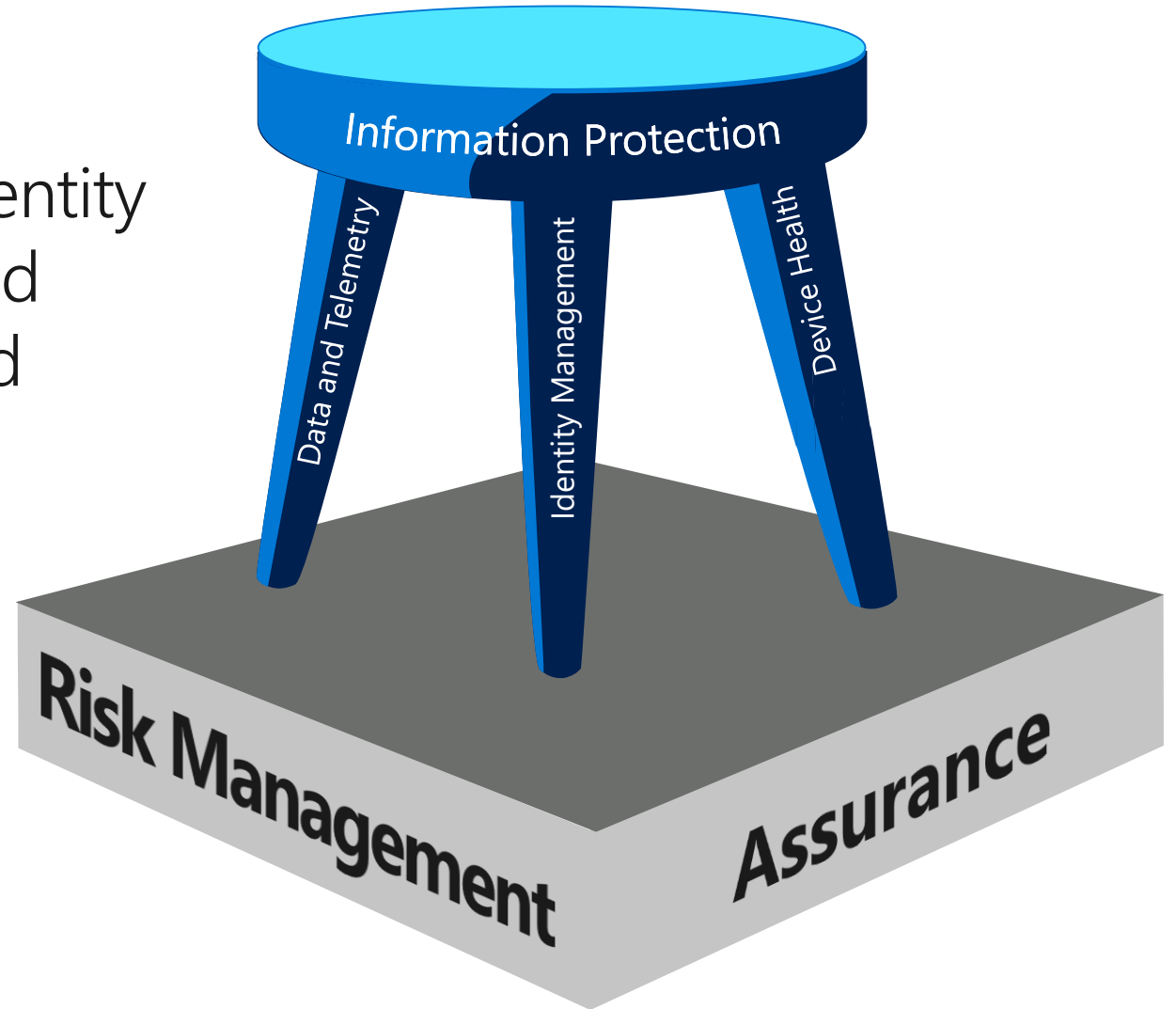
What we'll cover today

- ➔ Security focus
- ➔ Microsoft digital security strategy
- ➔ Data and telemetry approach
- ➔ Security world view
- ➔ Intelligence lifecycle
- ➔ Security intelligence overview
- ➔ CISO dashboard
- ➔ Q&A
- ➔ Insights and recommendations



Security focus

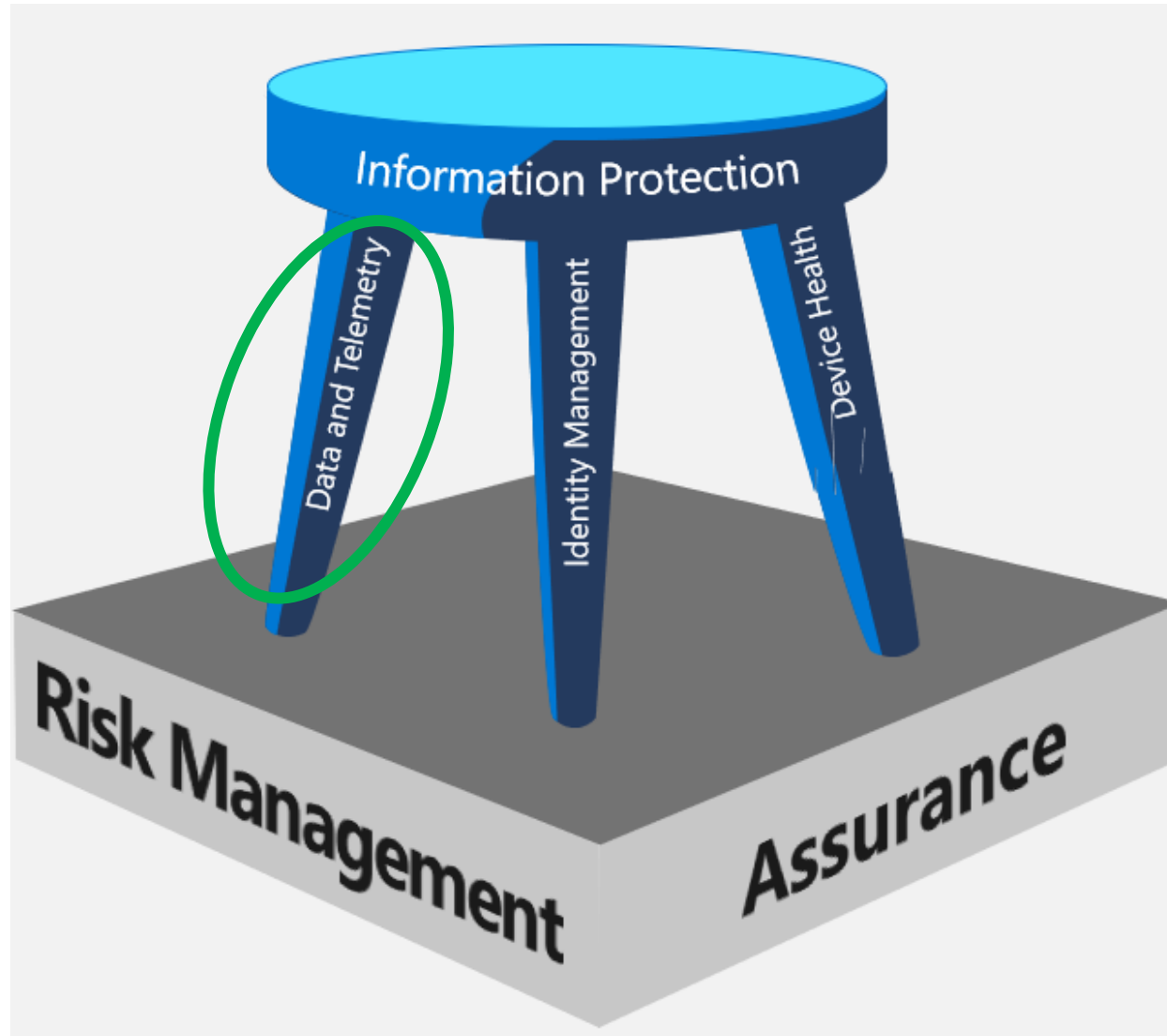
Balancing information protection, identity management, device health, data and telemetry, with risk management and assurance as the foundation.



FY19H2 Digital security strategy

SERVICES	EPICS					
	All internet facing interfaces are compliant Tier 1 critical services are resilient	Accelerate cloud security capabilities	Eliminate passwords Protect the administrators Simplify provisioning, entitlements, and access management	Evolve endpoint protection Only allow access from healthy devices Zero trust networks	Detect threats through user behavior anomalies	All Microsoft data is classified, labeled and protected
	Risk Management	Assurance	Identity Management	Device Health	Data & Telemetry	Information Protection
	Business response and crisis management Compliance Enterprise business continuity management Enterprise security governance and risk Security education and awareness Security incident response Security standards and configuration	App & Infrastructure security Emerging security products External assessments Red team penetration testing Supply chain security	Administrator role services Authentication Certificate management Credential management Provisioning, entitlement management, and synchronization	Endpoint protection Phishing protection SAW HRE Vulnerability management Virtualization	Data intelligence Security intelligence platform Security monitoring Threat intelligence	Data loss prevention Insider threat
	Security tools engineering					

Our data and telemetry approach



Security world view



➔ Opportunities

Globalization means more markets, customers, and business potential

Always-on access provides **more productivity**

Ability to **analyze massive data** sets at scale and speed

Scalable, cloud-based storage is more efficient, cost effective, and secure

Modern engineering: allows for more agility in building capabilities, features, and in responding to threats

⚠ Risks

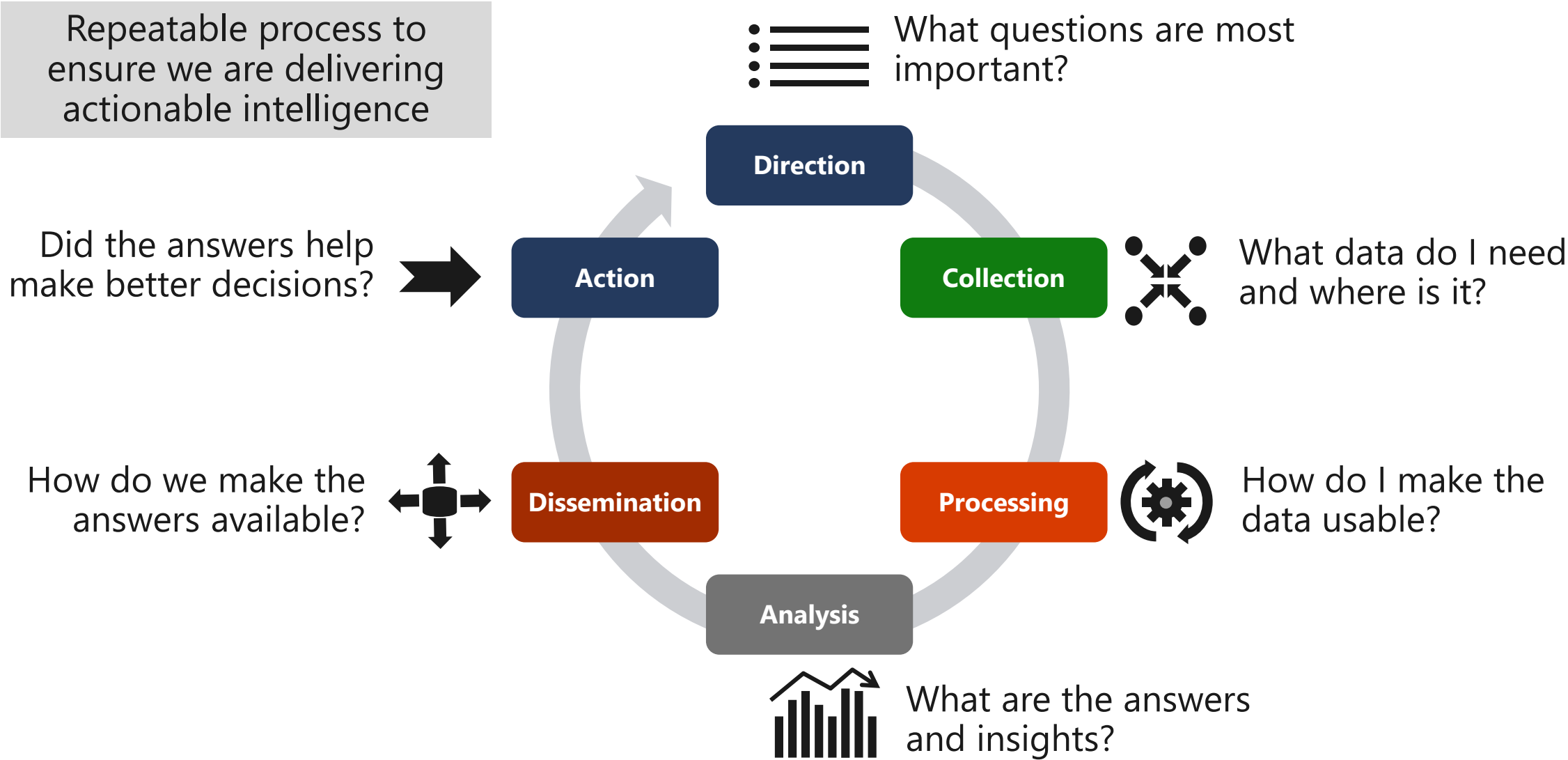
Globalization can lead to “**digital xenophobia**”

More lucrative targets give rise to more **dangerous threat actors**

More surface area for attacks/exposure to harm, including **supply chain**

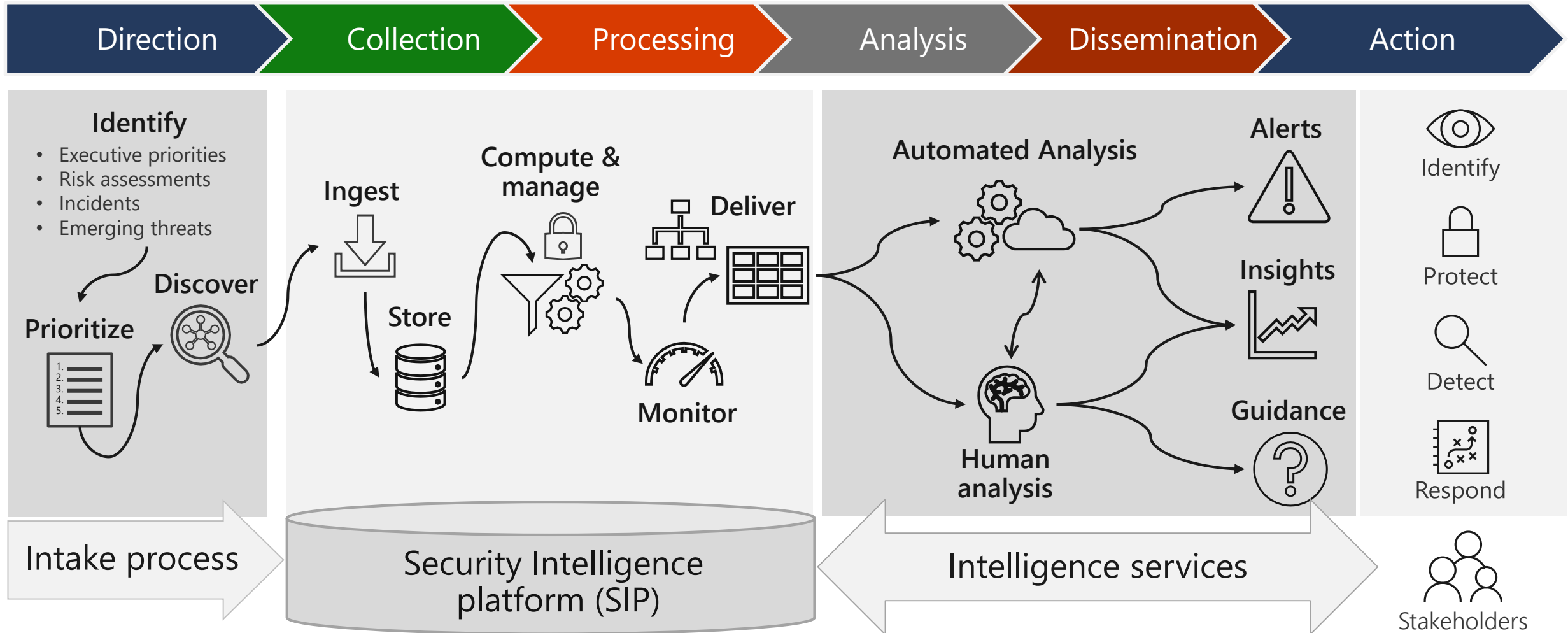
The client-to-cloud world requires a control shift
(**Identity is the new perimeter**)

Intelligence lifecycle



Security intelligence overview

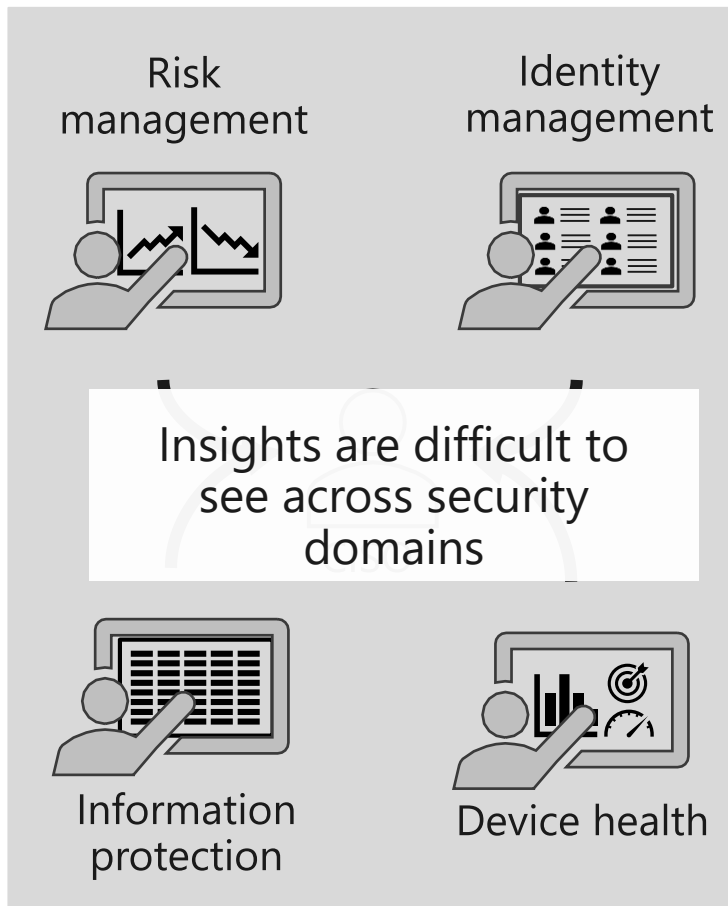
Intelligence lifecycle is supported by enterprise processes, platform, and services



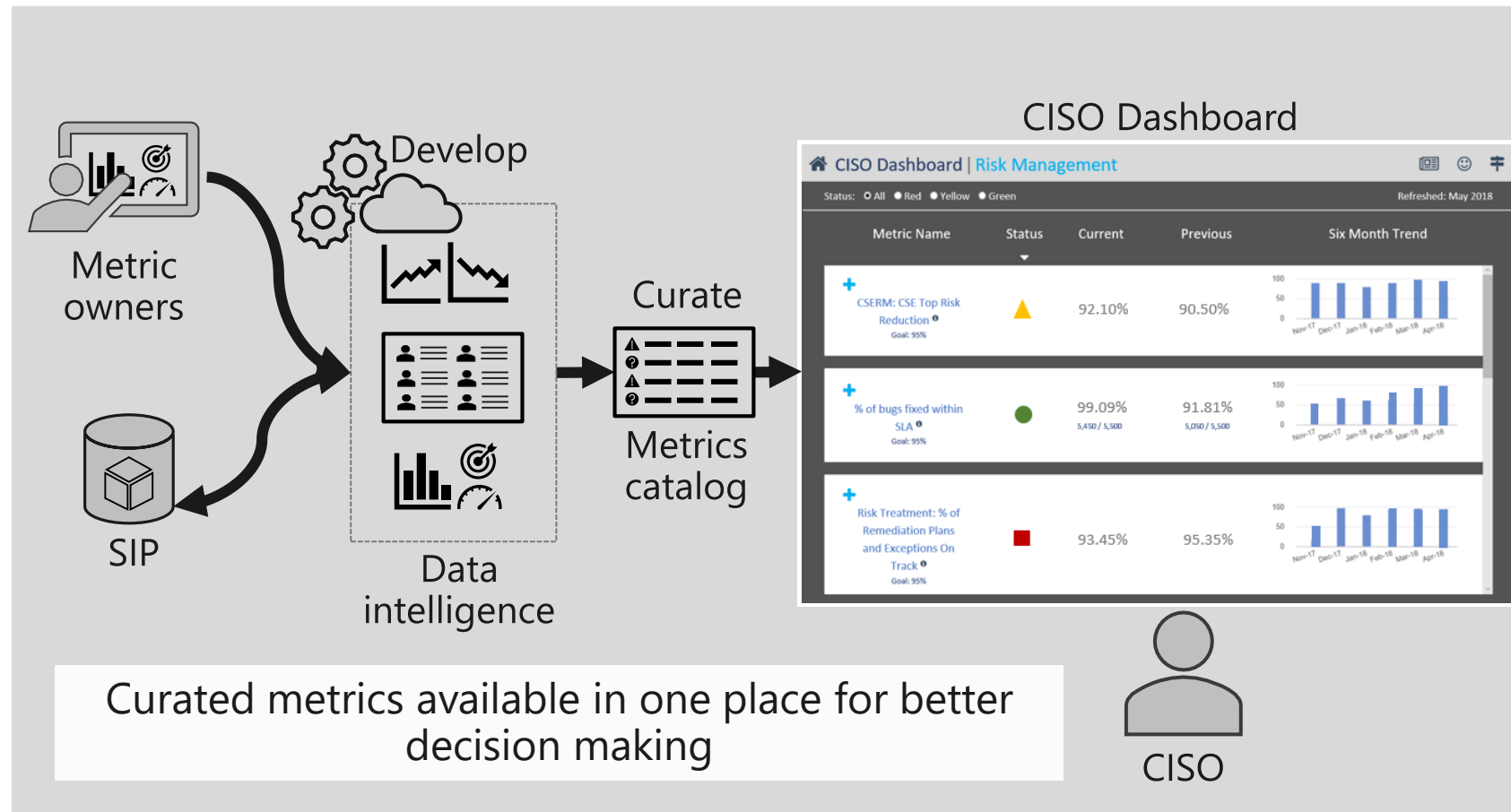
CISO Dashboard

A dashboard of curated metrics that provides real-time insights and decision support for securing the enterprise

Manual reporting and metrics



Automated Metrics and Reporting



Insights & recommendations

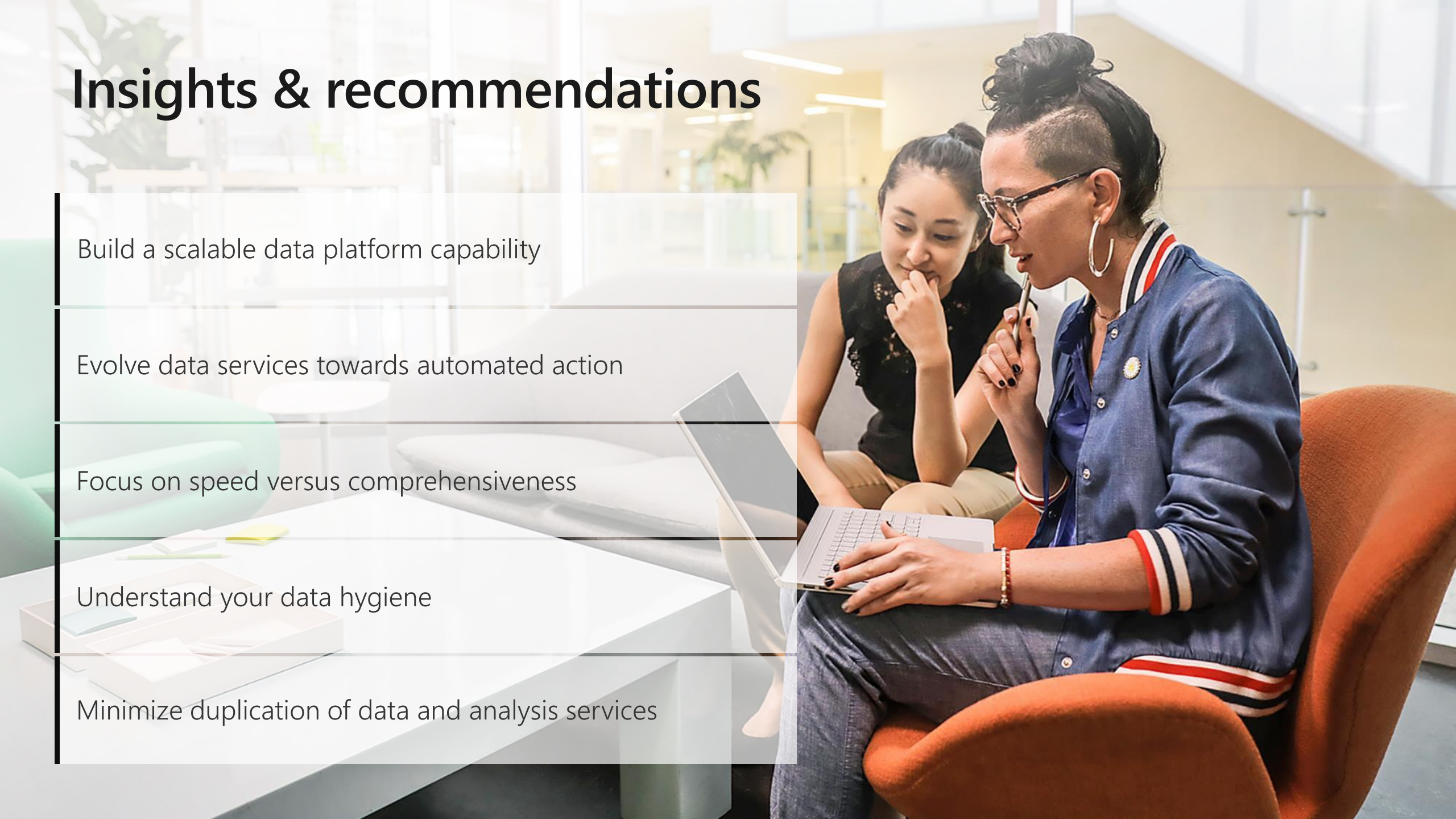
Build a scalable data platform capability

Evolve data services towards automated action

Focus on speed versus comprehensiveness

Understand your data hygiene

Minimize duplication of data and analysis services



Resources

Access all IT Showcase resources at Microsoft.com/ITShowcase

- [Speaking of security: A discussion with Bret Arsenault, CISO at Microsoft](#)
- [Sorting through the noise to protect the enterprise](#)

Microsoft IT Showcase

How Microsoft does IT



Visit the website

<http://www.microsoft.com/itshowcase>

