

A five-year, \$25 million program that harnesses the power of AI to amplify human capability for the more than one billion people around the world with a disability.



Why AI for Accessibility?

AI is now capable of hearing, seeing, and reasoning with increasing accuracy. Real-time speech-to-text transcription, computer vision capabilities, and predictive text functionality are just a few examples of how AI is useful to people with disabilities today.

AI for Accessibility aims to accelerate the development of accessible and intelligent AI solutions that build on recent advancements in Microsoft Cognitive Services to help developers create intelligent apps that see, hear, speak, understand and better interpret people's needs.

This grant program is a call to action for developers, NGO's, academics, researchers and inventors to bring their ideas to the next level.

Amplifying human capability



Technology

Access our cloud and AI platforms to create new solutions



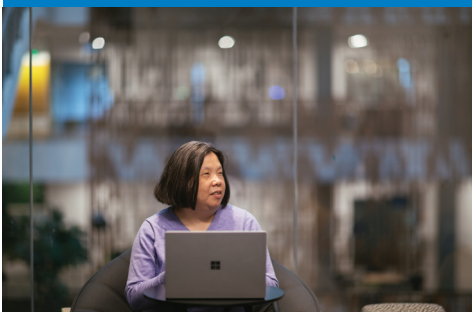
Knowledge

Accelerate development by working with Microsoft engineers for consultations



Partnership

Together we will create empowering experiences for people with disabilities.



For more information about AI for Accessibility, visit aka.ms/aiforaccessibility

Focus areas

There is a world of opportunities for applying AI to accessibility, and these are the areas the AI for Accessibility program will focus initially.

We will begin accepting applications in June 2018 at <http://aka.ms/grant>.



Employment

Challenge:

The unemployment rate for people with disabilities is more than double that of people without a disability.

Opportunity:

Use AI to help people develop additional skills in the work-place and evolve the culture around inclusive hiring.



Daily Life

Challenge:

Technology is not always affordable and is sometimes difficult to apply to an individual's unique scenario.

Opportunity:

Build modern solutions for people with disabilities by making software and devices smarter, more contextually relevant, and improve daily life.



Communication & Connection

Challenge:

Communication and connection are fundamental to providing equal access to information and opportunities. Lack of options excludes some from employment and society.

Opportunity:

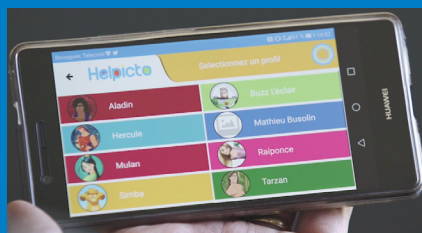
Modernize communication options for people, regardless of how they listen, speak, or write.

Experience AI in action



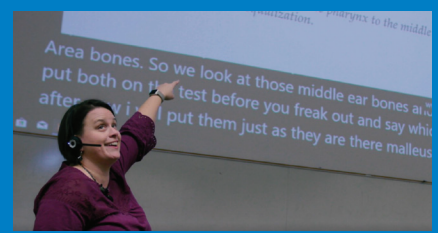
Seeing AI

A free app that narrates the world around you. Designed for the low vision community, this research project harnesses the power of AI to describe people, text, and objects.



Helpicto

Helpicto uses speech-to-text to generate sentences and leverages language understanding to categorize keyboards.



Microsoft Translator

Rochester Institute of Technology is using custom speech models and Microsoft Translator to improve accuracy of real-time captions for students.

For more information about AI for Accessibility, visit aka.ms/aiforaccessibility