

WorkshopPLUS: System Center Configuration Manager: Troubleshooting Infrastructure

Educate



The WorkshopPLUS provides participants with the skills required to analyse common System Center Configuration Manager (SCCM) Infrastructure issues, along with hands-on experience in utilizing related tools and resources for resolving the encountered problems.

The session consists of an instructor-led presentation, demonstrations, discussions and hands-on labs. Attendees will gain insight into the techniques and the process of troubleshooting various Configuration Manager Client issues.

♦ OUTCOMES ♦

01 SKILLS

Gain a deeper understanding of Troubleshoot Management Point, Software Update Point, Database Replication, Content Distribution, Performance Considerations and Backup and Recovery

02 BEST PRACTICES

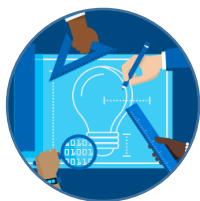
Understand and Identify the cause of server and client issues, support complex Configuration Manager environments

03 WAY FORWARD

Provide Microsoft Support with in-depth information as part of reactive cases using the skills learnt

♦ CAPABILITIES ♦

Hands-on, interactive learning with expert instructors in a classroom environment.



OUR EXPERTISE

Learn from industry experts that help enterprise customers solve their most challenging problems.



HANDS ON

Practice the concepts you learned in the classroom by engaging in hours of hands-on lab exercises.

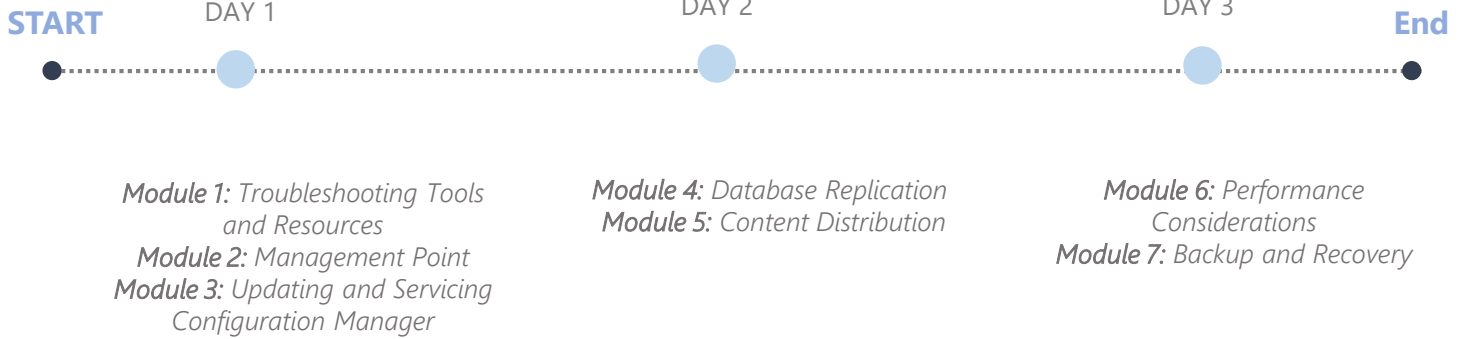


IN-DEPTH LEARNING

Deep technical training that equips you to overcome challenging problems in the real world.

AGENDA

Duration: 3 days



STATS

1000+
**COURSES
COMPLETED**

95%
**CUSTOMER
SATISFACTION**



ADDITIONAL DETAILS

Target Audience and Prerequisites

To ensure the highest quality of knowledge transfer expected by attendees, class size is limited to a maximum of eight participants (total of 16 with two instructors) who meet the following criteria:

- Advanced knowledge and experience with Microsoft System Center Configuration Manager

- Basic knowledge of Windows Server 2016 and a recent client operating system, such as Windows 8.1 or later version of Windows operating system

NEXT STEPS: If you are interested in a [[Change Text]] for your organization, contact your Microsoft Account Representative.