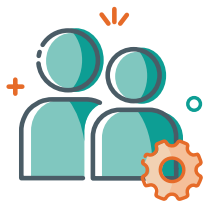




**Manage Microsoft 365 the Way That Makes Sense to Your Organization**



## Scale and Transform How You Manage Microsoft 365



### Right-Size Administration

Tailor and align administration permissions across your M365 tenant(s) to meet your operational and security needs. With our RBAC architecture, daily tasks like resetting a user's password, setting up a new resource mailbox, or clearing out inactive SharePoint sites, will only be accessible to admins who require it. You choose how admin permissions are structured - by application, location, business unit, department, tiered IT support - whatever makes sense for your organization.



### Maximize Adoption & ROI

Ensure your organization gets the most out of Microsoft 365 with consolidated activity dashboards. Understand what apps users most depend on, whether they are using mobile or desktop devices more, or which SharePoint sites have the highest impact on the organization. Dive deeper by application and discover which teams leverage features like Teams calls, SMS, or chats and if the quality of the connection might be the reason why others are not using them. You've invested, safeguard its use.

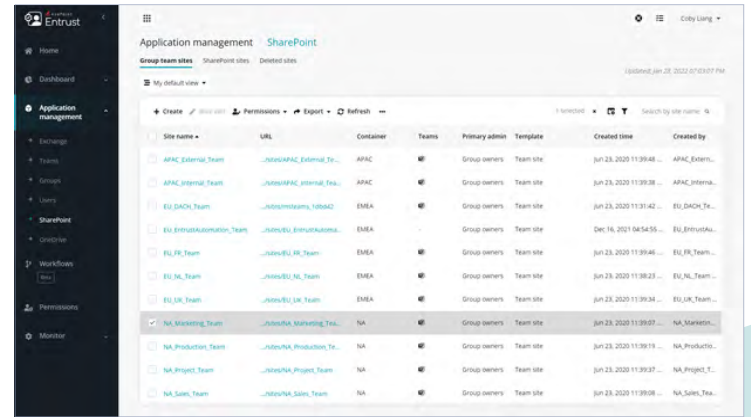
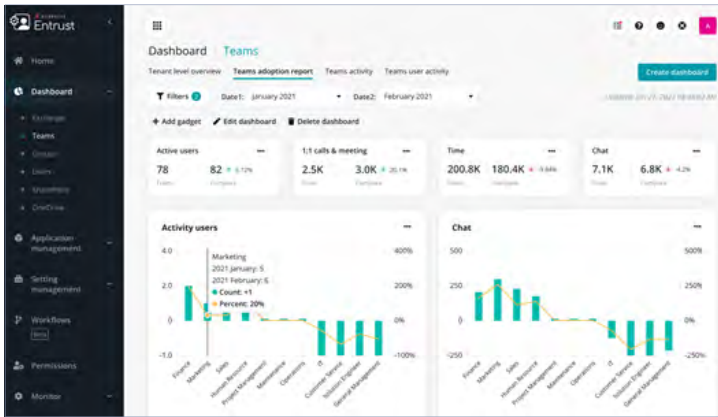
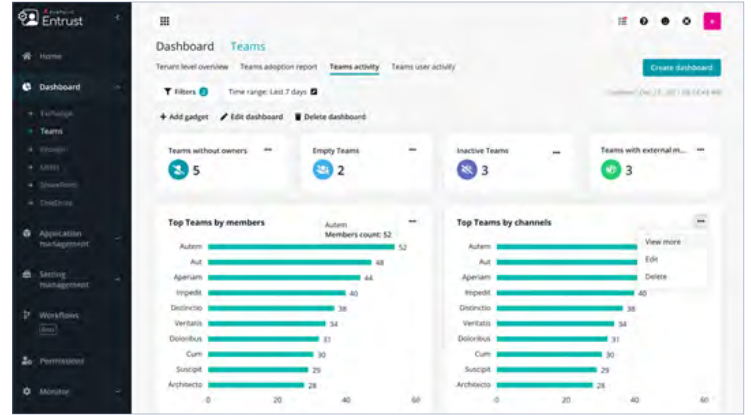
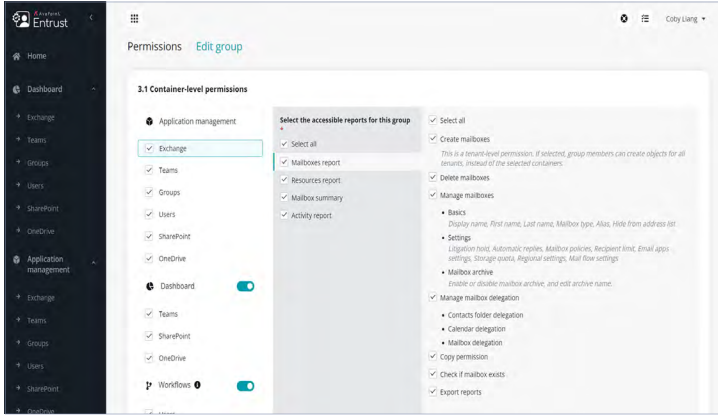


### Centralize & Monitor Activity

Streamline how you gather and access admin logs across Microsoft 365 by centralizing all audit and job information in one central location. Quickly identify and get to the root of why a job was unsuccessful or review in bulk to see if any trends need remediation. Break down visibility into audits and jobs one step further by only giving access to admins that need it.

## ALIGN ALL MICROSOFT 365 TENANTS WITH YOUR OPERATION

Whether your organization has one or multiple M365 tenants, the integration of services behind Microsoft 365 has created complexity on how IT can control and secure what each administrator can see and do. Many organizations are at a point where they've locked down admin privileges to a select few, bogging down those valuable resources with routine requests and tasks when there are logical admin users throughout the organization that could reduce the burden and foster sustained scalability. Empower your team to work faster and get more done with AvePoint Entrust. Flex administration permissions, monitor who is doing what in your tenant(s), and quickly get to the root of an issue and fix it.



**CONTROL**

- **Centralize multiple tenants** – Manage multiple tenants in one place and control who has access to which one and ensure company policies are adhere to in each one.
- **Administration permissions** – For Exchange, Teams, SharePoint Online, OneDrive, Azure Active Directory, and Groups, breakdown administration permissions and give each admin access to only what they need.
- **Audit log** – Quickly generate and export admin user audit reports for Exchange, Teams, SharePoint Online, OneDrive, Azure Active Directory, and Groups.
- **Monitor jobs** – Understand whether a job was successful or unsuccessful. For those unsuccessful, dig into the root cause and fix it.

**VISIBILITY**

- **Centralized dashboards** – Thru application dashboards, surface critical information in one pane, and act immediately.
- **M365 Adoption tracking** – Understand how users are leveraging M365 with user activity, M365 apps, and user activation charts.
- **M365 App reports** – Review key activity by application with container-level report charts for Teams, SharePoint Online, Exchange, and OneDrive.
- **Storage Quota** – Know and monitor Group mailboxes and sites storage quotas in your organization over a selected time range. In addition, monitor and track your top SharePoint sites and user OneDrives that use themost storage.

For a comprehensive list of new features in this release, please view our release notes.

**How to Buy AvePoint Products**

201.793.1111 | [Sales@AvePoint.com](mailto:Sales@AvePoint.com) | Start your free trial today: [www.avepointonlineservices.com](http://www.avepointonlineservices.com)  
 AvePoint Global Headquarters | 525 Washington Blvd, Suite 1400 | Jersey City, NJ 07310