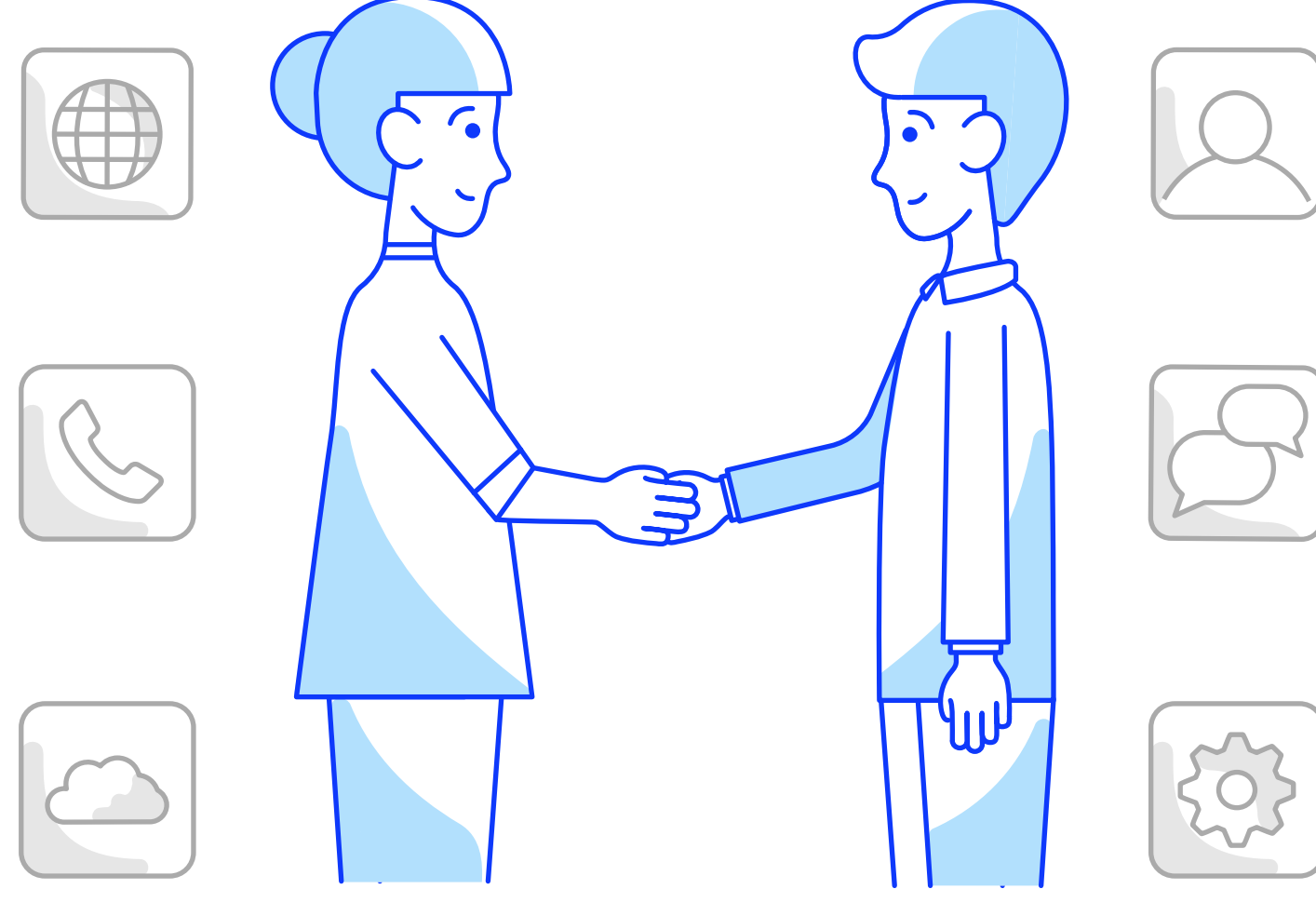


Choosing the right app modernisation approach

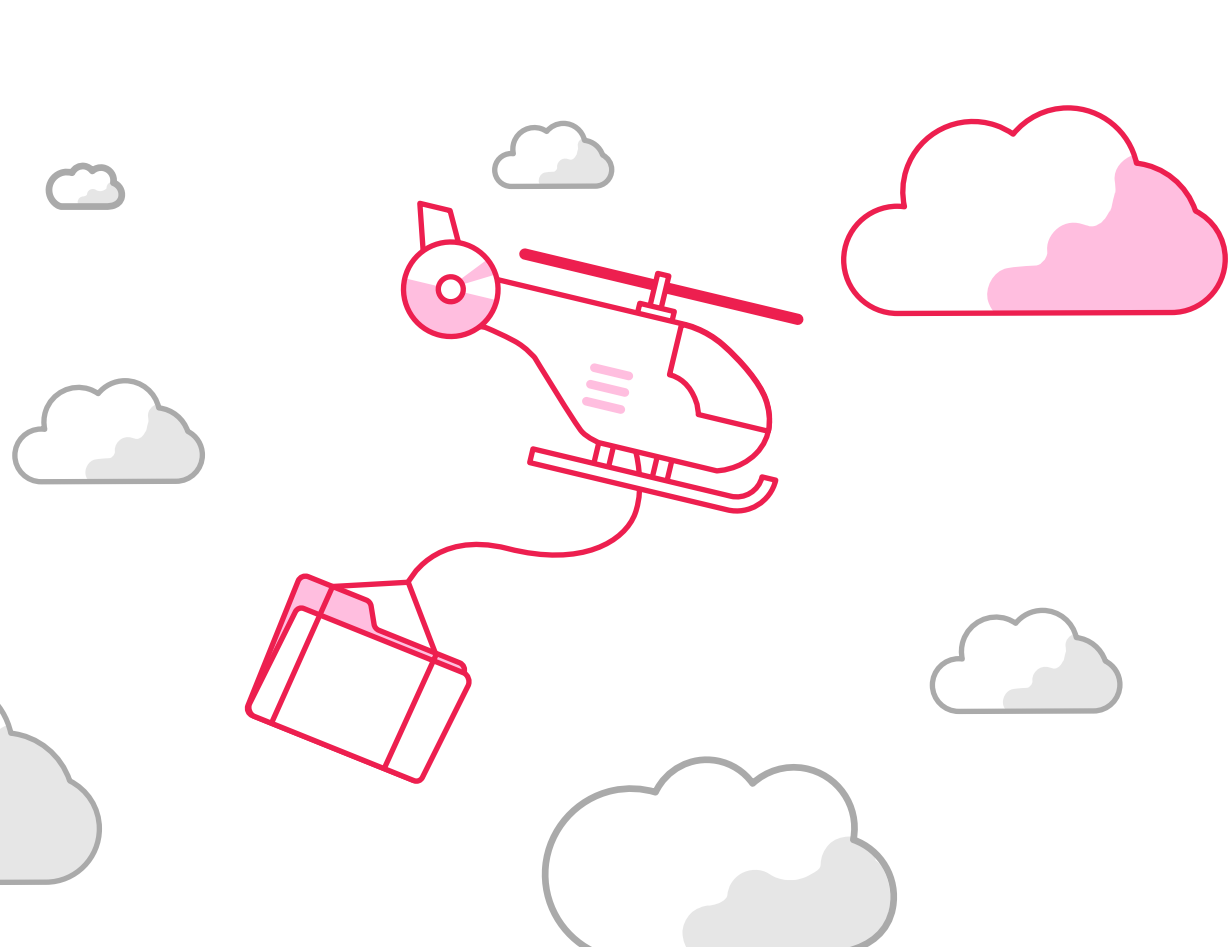
There are six strategies for app modernisation. The best approach will need to consider an apps' strategic fit against short and long-term goals. Part of the discovery and definition stages of our framework is about understanding what approach will work best for each app.

We work closely with Microsoft to modernise apps on the Azure platform because of Azure's market-leading capabilities, but these approaches are applicable to any platform.



Rehost

Often referred to as "lift and shift" migration, this option lets you migrate existing applications quickly, without the risks or costs of making code changes.



- When you need to move apps to the cloud quickly.
- When you don't have access to the application source code.
- For apps that don't evolve often and would benefit from IaaS scalability and security.

Replatform

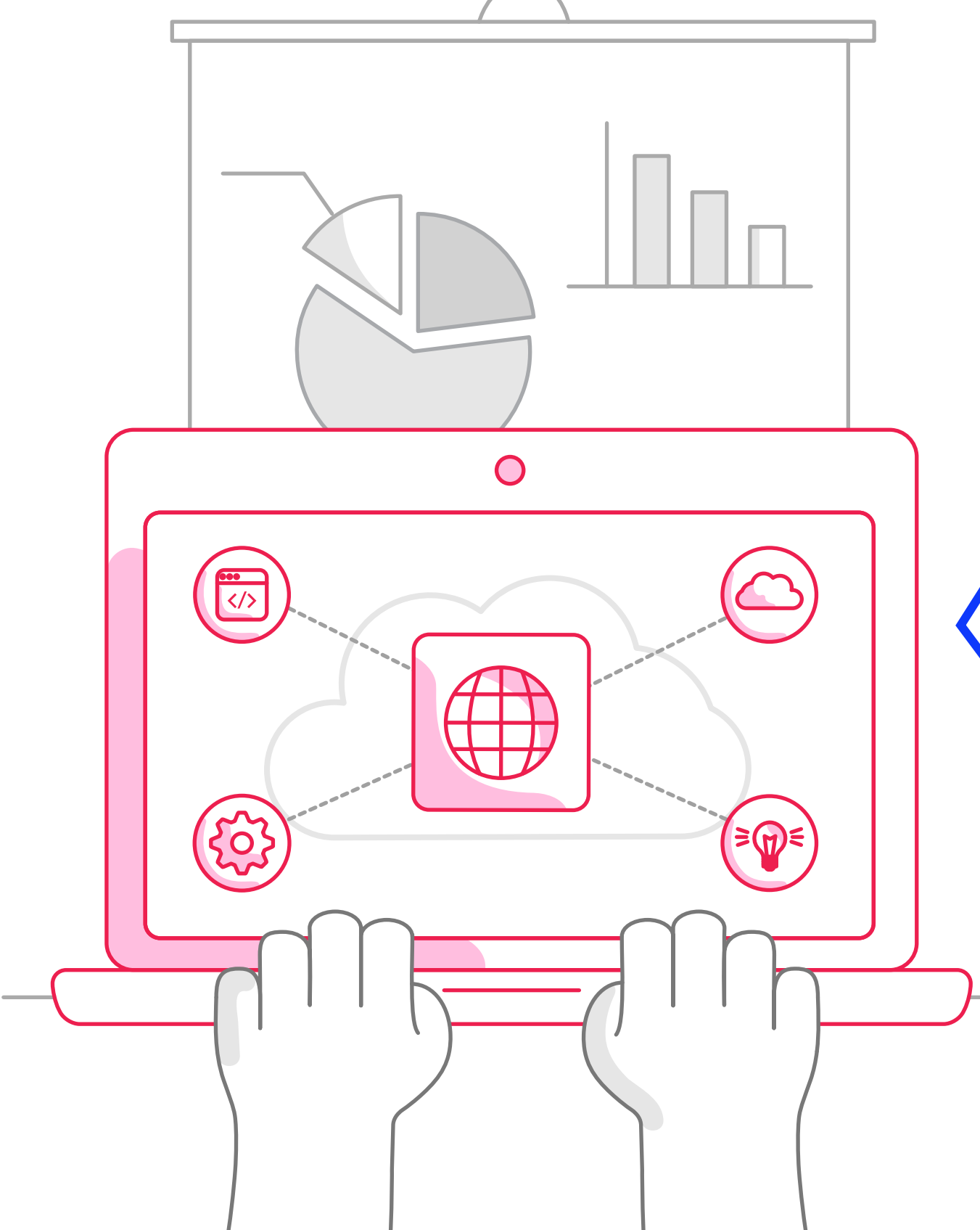
This cloud migration strategy involves some changes to the app design and code so it can run on cloud natively.

- When you have access to the codebase.
- A relatively quick and high impact way to modernise your apps.



Rearchitect

Sometimes the existing architecture of the app or a suite of apps doesn't fit into your future direction. That's when you might need to change the app architecture or perhaps consolidate a few apps.



- When other options have been explored, you should make this choice sparingly, as it could be costly.
- Use when the existing app architecture or solution architecture does not support your current or future business needs.
- Beware of the hype cycle. Don't leverage the latest and greatest architecture everyone's talking about because it looks good on paper.
- Consider code evolution techniques such as the Strangler pattern to enable you to evolve the app iteratively, without causing disruption to your business.

Rebuild

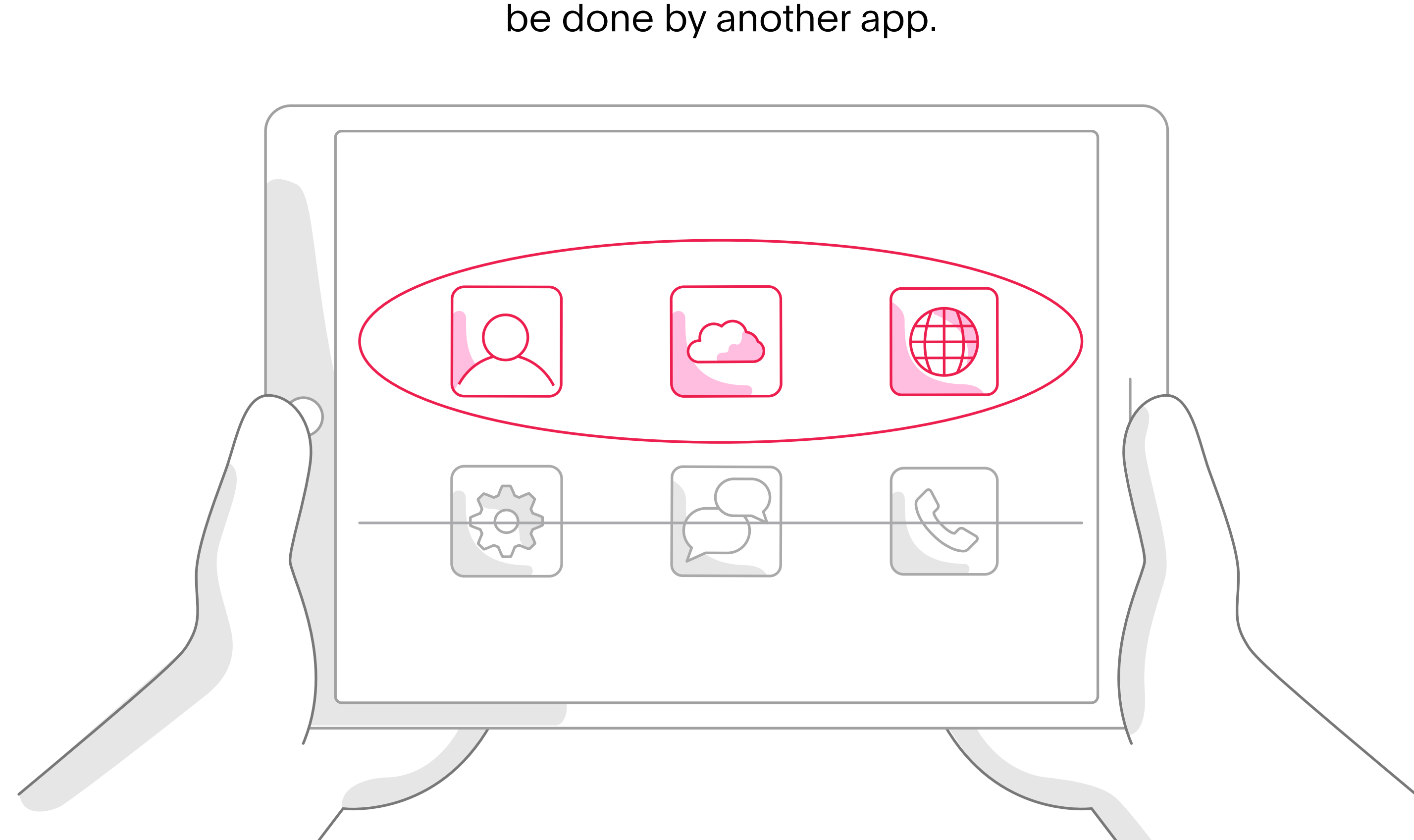
There are times when the cost or risk of maintaining a legacy app becomes prohibitive. This is typically the case when the technology used to build the app is no longer widely supported. In that case you might consider rebuilding the app from the ground up.

- Technologies that are discontinued, antiquated or are hard to hire for.
- When you need to perform a business model pivot or innovation.



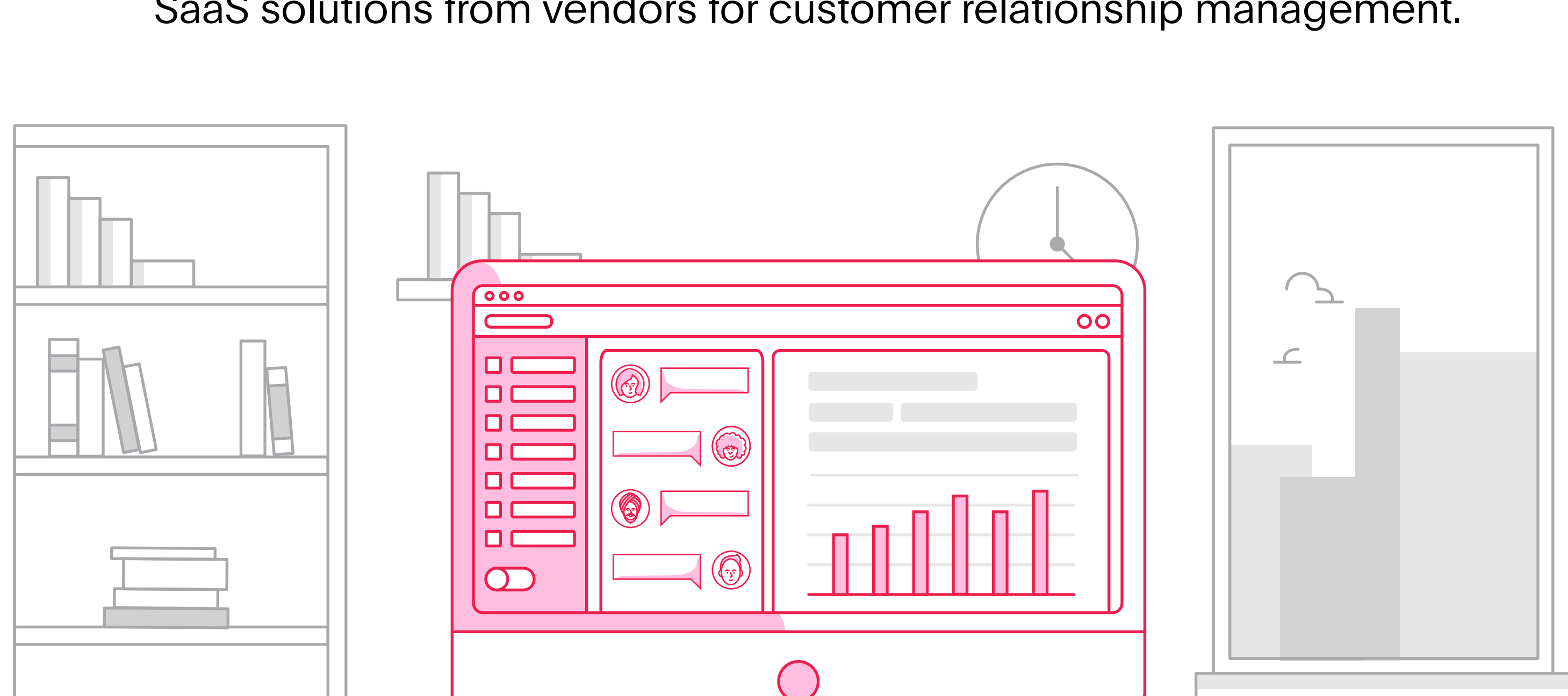
Retire

Not every app needs to be modernised. Once you have been through the discovery phase your business will be able to identify the apps which will not support your desired future state, either because the functionality is no longer necessary, or it can be done by another app.



Replace

Moving your bespoke, on-prem app to a cloud native Software-as-a-Service (SaaS) product might be the perfect option for some situations. As an example, there are many SaaS solutions from vendors for customer relationship management.



Start your app modernisation journey today

For more information about app modernisation and to discover how we can help, contact a Purple expert today. We are ready to help accelerate your digital transformation.

[Click here to get started](#)