

DEVOPS EQ

DevOps Consultation-as-a-Service

DevOps Maturity Assessment - focused on development effectiveness and efficiency

This presentation, any associated documentation, and the information contained within are provided in confidence, and may not be disclosed to any third party without the express written permission of Arctiq Inc.



Organizations are unable to sustain and measure DevOps adoption

- Failing DevOps adoption due to wrong vision and lack of talent
- Stagnation and lack of optimized approach
- Disparate patterns and maturity due to DIY (Do It Yourself)
- Introducing Best In Class (BIC) tools but without cohesivity/orchestration

We help you pick the best patterns and help you mature with the existing toolset

DEVOPS



ARCTIQ
A Benchmark Company

- Dev x 1 + -
- UAT x 1 + -
- Staging x 1 + -
- Prod x 1 + -
- REPORT ✎

↶ Reset

← Calculator

Auto Comparison
Custom Configuration
Heroics Heatmap

Orchestration Necessity By Stage Type

Human Effort By Allocation

Stage Totals Failure Rate

	Dev	UAT	Staging	Prod
Dev	x1	x1	x1	x1
Failure Rate	15%	5%	10%	0%
Process	5.00	Process 1.00	Process 0.33	Process 0.00
Environment	0.00	Environment 0.00	Environment 0.00	Environment 0.00
Deployment	0.00	Deployment 0.00	Deployment 0.00	Deployment 0.00
Testing	1.58	Testing 1.58	Testing 1.58	Testing 1.58
Security	0.00	Security 0.00	Security 0.00	Security 0.00
Audit	0.00	Audit 0.00	Audit 0.00	Audit 0.00
Total days	1.46	Total days 0.52	Total days 0.41	Total days 0.30

Totals

Process	7.17
Environment	0.00
Deployment	0.00
Testing	6.81
Security	0.00
audit	0.00
Total days	2.69

Identify the human effort in your Software **D**elivery **L**ife **C**ycle



Our Framework

- Dynamic to customer – supports Snowflake
- Gets insight from each stakeholders (Development/Operations/Security)
- Measures business pressure from time to market against the talent pool responsible for change

How?

- Identify and measure **ONLY** the areas of orchestration
- Meet the business requirements by in-house talent pool and reduce the challenge of finding elite DevOps resources
- Aggregate the total effort required to release and compare it with the available capacity within the team
- Adopting the engineering effectiveness principles for corrective action

Understand the motivation and engagement within your team



Understand your team using the Emotional Quotient and achieve the DevOps EQilibrium for job satisfaction

This Is Your Current State

Staff Is Under Utilized Causing Inefficiency

② Current Release Frequency	1 Biweekly
② Total Hours Available Per Release	676.00 hrs
② Total Hours Required Per Release	13.97 hrs

This Is Your Current State

Unable To Meet SLDC Requirements

② Current Release Frequency	1 Biweekly
② Total Hours Available Per Release	800.00 hrs
② Total Hours Required Per Release	1,300.00 hrs

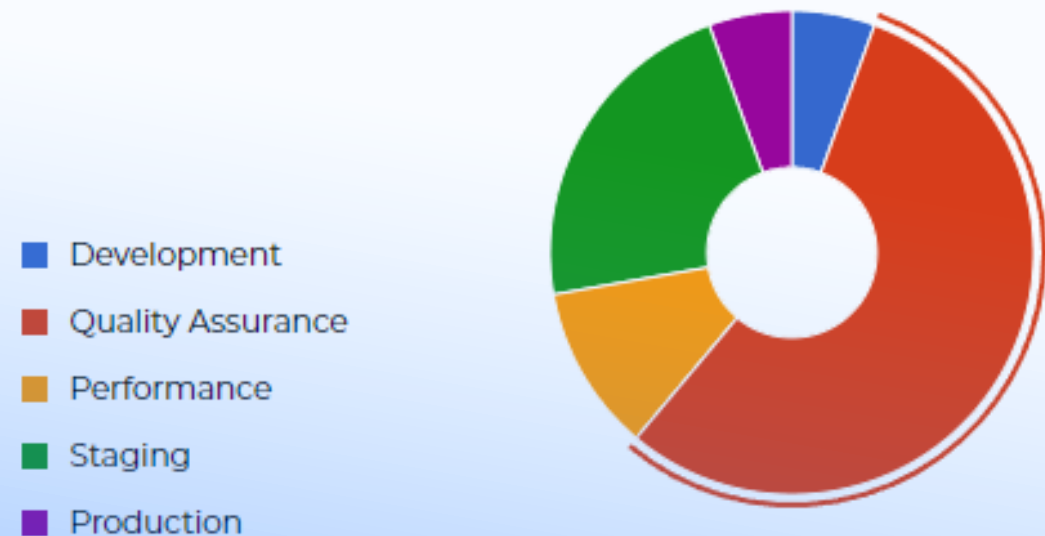
Identify the burden in your Software **D**elivery **L**ife **C**ycle



Compare SDLC requirements
with available resources to
measure efficiency

Identify area of burden in the
SDLC process

Orchestration Necessity
By Stage Type





Benefits of DevOps and Arctiq's Framework

Minimizes
Time

of hours of downtime
in production

Minimizes
Errors

% of human errors in
deployments to production

Minimizes
Effort

of production epics and
stories orchestrated –
unbreakable pipelines

90x

More promotions of
business features

13x

Faster audit preparation

20x y/y

Company-wide security
coverage / fitness increase



What do clients receive as an outcome of the assessment from DevOpsEQ ?

- Current and future state design of client's **SDLC**
- Detailed assessment report with recommendations
- Prioritized roadmap to mitigate the burden, inefficiencies or optimize the existing process



How does a DevOps Maturity assessment with Arctiq work? – DevOps Consultation-as-a-service

● Solution Offering

- DevOps Consultation-as-a-Service (to address Scarcity of Elite DevOps Resources)
- Provide you a detailed report encompassing findings and recommendation with a 2-year roadmap

(Optional and if required) create a specialized Statement of Work (SoW) to address your SDLC challenges.

BEGIN YOUR ARCTIQ JOURNEY TODAY

Contact info@arctiq.ca to gain insights using our applications

arctiq.ca



ARCTIQ

A Benchmark Company

This presentation, any associated documentation, and the information contained within are provided in confidence, and may not be disclosed to any third party without the express written permission of Arctiq Inc.

*Arctiq Confidential



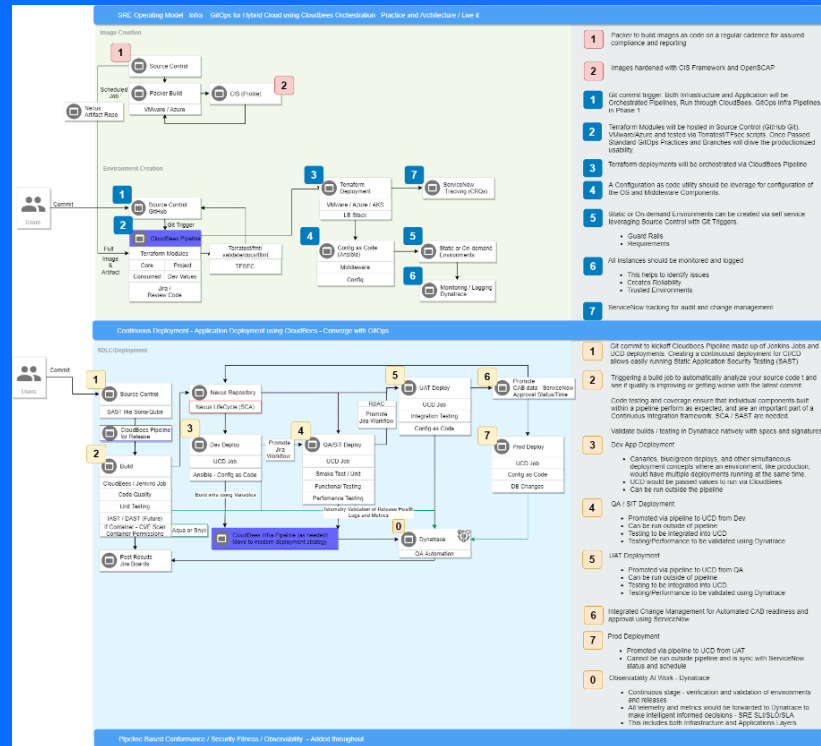


Sample Outcome Artifacts

Current and Future State SDLC

Detailed Report with recommendation and roadmap

Targeted Patterns Based Upon Your Current State



Software Engineering Practices Report	
TABLE OF CONTENTS	
1.0 - Summary & Methods	6
2.0 - DFW - DevOps IQ (DevOps Equilibrium)	7
Technology Stack & Applications (as assessed for DFW)	8
Asset Management Application	9
Asset Operations Application	10
AEM Application	11
Swift Application	12
AM/RO Summary & Recommendations	13
Recommendation	14
AEM/RO Summary & Recommendations	14
Recommendation	14
3.0 - AM/RO - Current SRE Workflows	15
AM/RO Artifacts	15
AM/RO SRE Capabilities	16
4.0 - AEM / Swift - Current SRE Workflows	17
AEM/RO Artifacts	17
AEM/RO SRE Capabilities	18
5.0 - Proposed SRE Workflows	19
DFW SRE Proposed Summary	19
Proposed Artifacts	20
Proposed SRE Capabilities	20
6.0 - Infrastructure Software	21
Rating of Maturity Level (Scale of 0-5)	21
Vulnerabilities	22
Findings	22
Risk	22
Recommendation	22
Example Artifacts	23
Example Artifacts	23
6.0 - Configuration / Customization	24
Rating of Maturity Level (Scale of 0-5)	27