



From Consulting to Managed Services
and Global Support.

Azure Foundation & DC Migration

Microsoft Partnership

Focus Solutions in all Microsoft Clouds

- ✓ Modern Work
- ✓ Azure
- ✓ Dynamics



**Microsoft Gold
Partner since 2004**



**Strong relationships
with the Microsoft
Account Teams**



**Continued Training on
Microsoft Technologies
with Our Consultants**



Public Cloud Focus Areas

End to End Cloud Adoption

- Advisory to Operational Managed Services
- Cloud Strategy Roadmap
- Cloud Operating Model

Accelerating Cloud Migration & Modernization

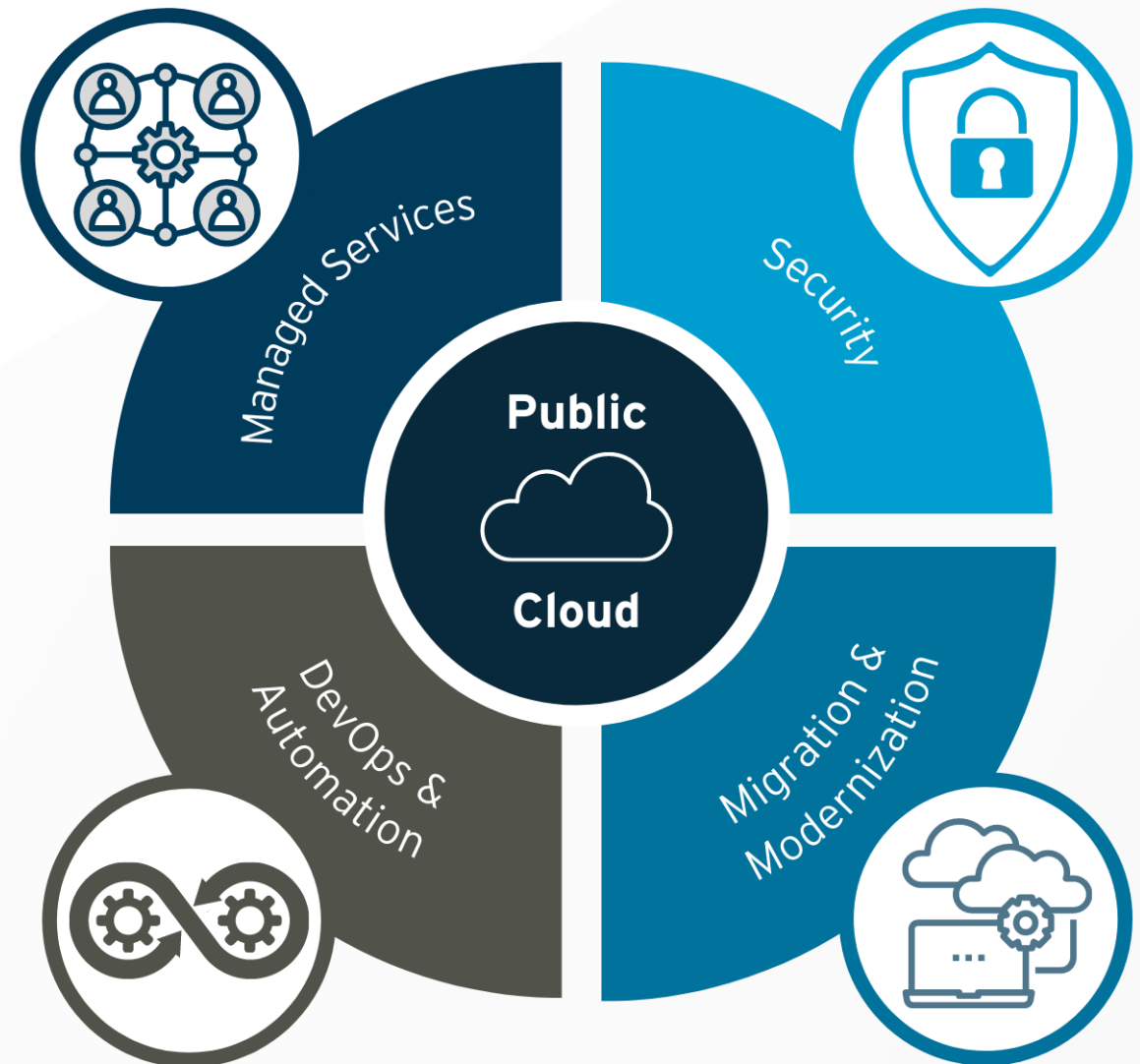
- Cloud Landing Zone & Foundations
- Migration Assessment & Execution
- Containerization, IaaS, PaaS, & FaaS
- Cloud Virtual Desktop Solutions

Enhancing DevOps & Automation

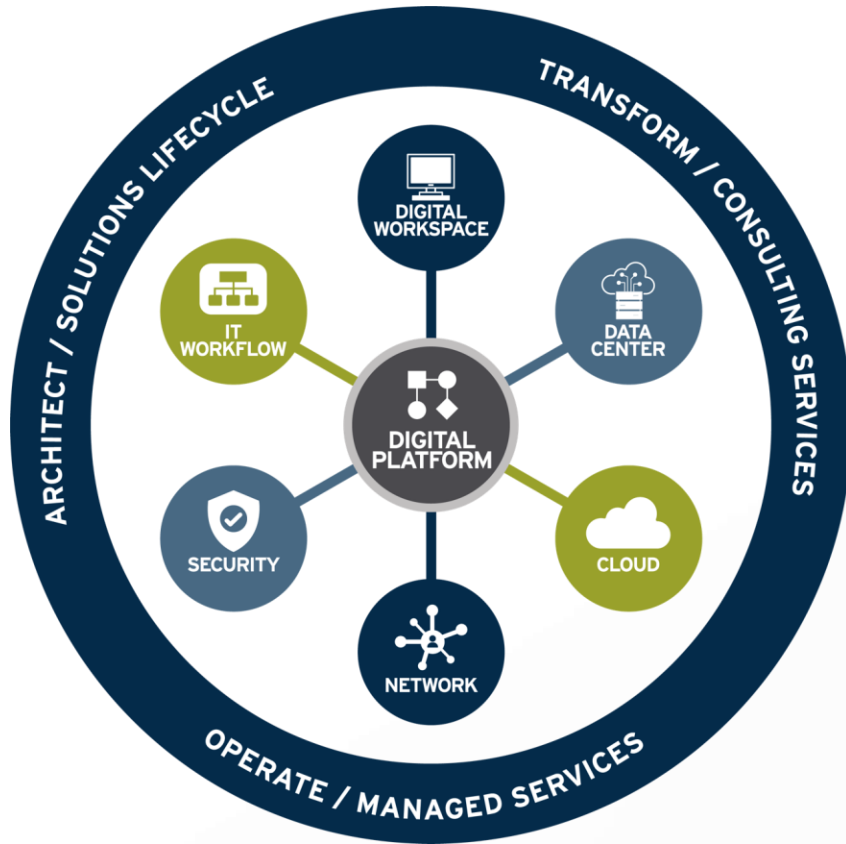
- Scaling cloud deployments with Infrastructure as Code
- Developing DevOps practices
- Building CI/CD automation

Combating Modern Security Threats

- Cloud Security & Governance Framework
- Threat Detection & Modern Security Architectures

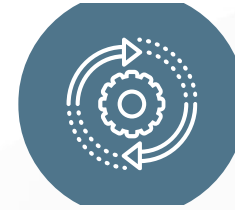


Our Cloud Capabilities



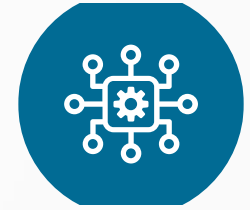
ARCHITECT SOLUTIONS LIFECYCLE

- Cloud Strategy & Roadmaps
- Cloud Cost Assessment
- Cloud Readiness
- Cloud Operating Model
- Cloud Security & Governance Framework
- Cloud Solution Design
- Well Architected Review
- Cloud Migration Assessment



TRANSFORM CONSULTING SERVICES

- Cloud Foundations & Landing Zone Deployment
- Cloud Migration Execution
- CIO & CISO Advisory
- IT Mergers & Acquisitions
- IT Program & Project Management
- Modernization
- Organization Development



OPERATE MANAGED SERVICES

- Cloud Managed Operations & Optimization
- Cloud Managed DevOps
- Cloud Managed Security
- Cloud Advisory Support
- SOC/SIEMaaS
- BaaS + DRaaS

Our Approach

DIGITAL PLATFORM



Security



Cloud



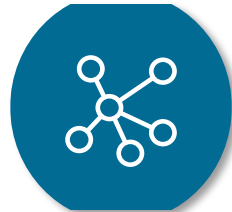
**Management
Consulting**



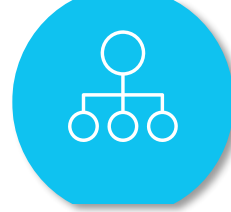
**Digital
Workspace**



**Data
Center**



Network



**IT
Workflow**



CRM

ARCHITECT



TRANSFORM



OPERATE

Solutions Lifecycle

- Cloud Cost Management
- IT Asset Management
- IT Financial Management
- Maintenance Renewals
- Product Procurement
- Roadmaps

Consulting Services

- vCIO & vCISO Advisory
- Mergers & Acquisitions
- Program & Project Management
- IT Strategy
- Technology Consulting Services

Managed Services

- Business Applications
- Cloud
- Data Center
- Digital Workspace
- IT Workflow
- Network
- Security

iVision Cloud Skills

Architecture

- Well Architected Design
- Resource Management and Governance
- High Availability and Disaster Recovery
- Cost and Performance Optimization
- Identity, Security, and Encryption
- Migration (Rehosting, Replatforming, Refactoring)

Infrastructure Services

- Compute
- Storage
- External Networking (WAN/VPN/Direct Connect)
- Network Policy and Management (VPC/WAF/ALB/NLB)
- IPAM
- DNS

Platform Services

- Identity, Security, and Encryption
- App Containerization with Kubernetes / Docker
- Web Services
- Serverless / Cloud Native
- Databases and Data Warehouse
- Enterprise Service Bus

Automation

- Continuous Integration (CI)
- Continuous Delivery / Continuous Deployment (CD)
- Infrastructure As Code (IaC)
- Terraform / Ansible / Puppet / Chef / SaltStack
- Package Management
- Cross Platform Machine Images

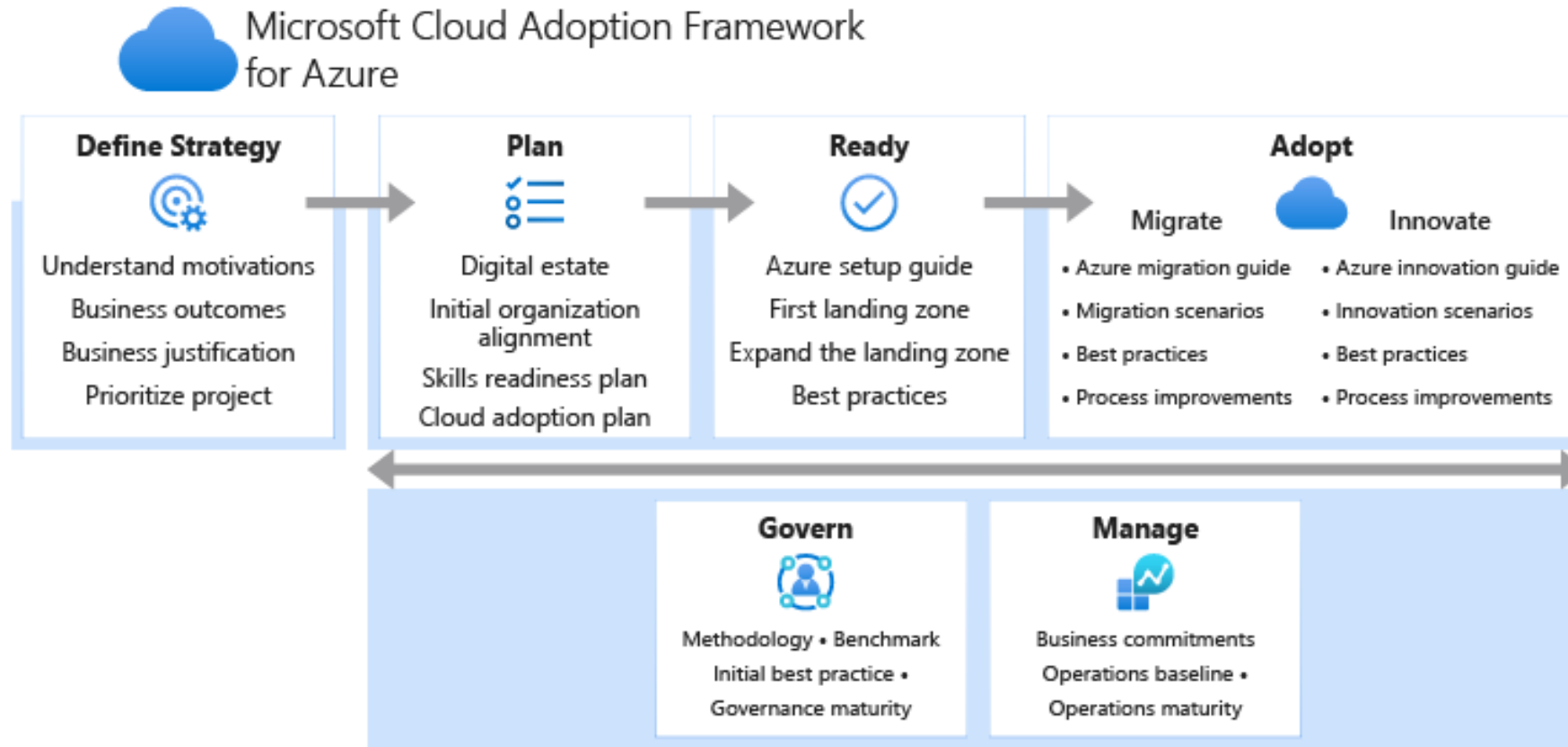
Development

- Enterprise Applications SDLC
- Web Applications
- Serverless / Cloud Native
- Microservices
- CQRS/Event Driven Architectures
- Test Driven Development

Security



iVision Alignment to Cloud Adoption Framework (CAF)



iVision delivery methodologies aligns with Microsoft Cloud Adoption Framework (CAF)

iVision Momentum Delivery Framework

PLAN



INITIATE ENGAGEMENT

- Conduct detailed discovery
- Outline requirements
- Identify risks
- Define team's roles
- Develop project plan

DESIGN



ARCHITECT SOLUTION

- Create a detailed design
- Define test plan
- Plan migration
- Submit change control requests

EXCECUTE



IMPLEMENT DESIGN

- Build out based on design
- Test and validate solution
- Conduct migration
- Manage risks

CLOSE



CLOSE PROJECT

- Validate client satisfaction
- Complete knowledge transfer
- Transition to operations

OPERATE



MANAGE SYSTEMS

- Manage daily operations, including change management
- Monitor performance & identify ways to continuously improve

Goals & Strategy



1

Perform Azure Economic Assessment

An Azure Economic Assessment is a iVision co-sell solution that leverages a data-driven discovery tool owned by Microsoft called Movere to scan the environment, map dependencies, aggregate findings, expose analytics, and apply advanced AI/ML concepts to produce cloud “right-sizing” optimization recommendations along with proven economic forecasting.

2

Perform Planning & Environment Discovery

Assess current environment for security, monitoring and networking and plan using iVision’s Azure Health Check co-sell solution and design Azure Landing Zone

3

Deploy Azure Landing Zone and migrate existing resource

Deploy an Azure Landing Zone using iVision’s Azure Foundation co-sell solution to ensure readiness for accelerated adoption. Migrate resources from existing Azure subscription(s) to new environment

4

Migrate Workloads to Azure

Migrate resources from on premises and existing Azure subscription(s) to new Azure environment.

5

Take next steps in adopting the Azure platform

Based on the outcomes of the application assessment(s) in step 3, execute on the next steps in the Azure adoption journey, relying on the secure, governable framework established by the Azure Landing Zone.

Azure Foundation (*Landing Zone*)

WORKLOAD DISCOVERY AND DESIGN



- Subscription and Management Group review and design
- Discuss naming standards and configuration
- Discuss Tagging standards
- Discuss IAM / RBAC
- Discuss Operations – Backup, Monitoring, & DR Requirements
- Determine networking CIDR ranges
- Determine networking configurations within Azure & Hybrid
- Discuss firewall configuration and vendor

DESIGN AND DOCUMENTATION



- iVision prescriptive Azure Foundation (*Landing Zone*) drawing
- Design and documentation for all Foundation (*Landing Zone*) requirements

DEPLOY



- iVision deployment of Azure Foundation (*Landing Zone*) into customers environment
- Deployed with IAC – Infrastructure as Code

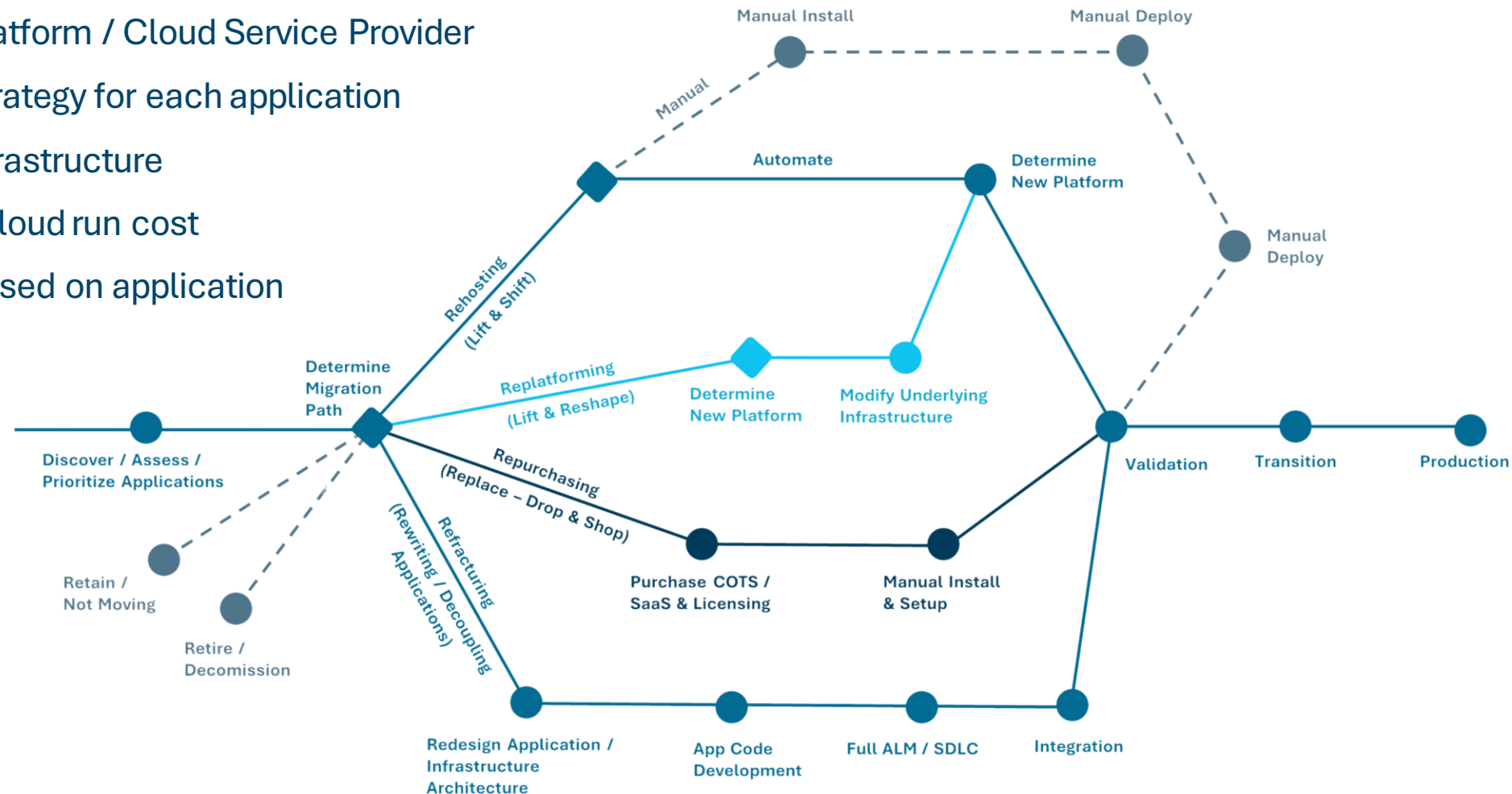
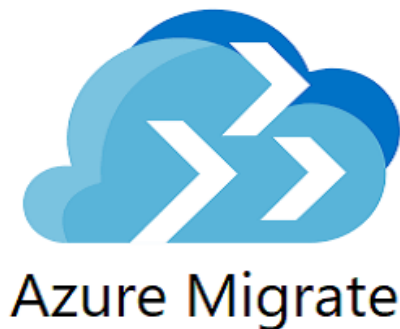
OUTCOMES

- **Deployed Azure Foundation (*Landing Zone*)** –Deployment of an Azure Foundation (*Landing Zone*) to include Networking, VPN Gateway connectivity, Management Groups and Subscription design and governance, Base Line RBAC and Naming Standards
- **Azure Foundation Documentation** – Architectural diagrams including subscription topology, on-premises connectivity pathways, relevant resource group designs, and other design aspects of the landing zone as described in the scope of work.
- **Knowledge Transfer** – Knowledge transfer for operational support

Cloud Migration Assessment

iVision leverages best-of-breed tooling and methodology to help clients determine:

- iVision aligns with MSFT Cloud Adoption Framework
- Ideal target Cloud Platform / Cloud Service Provider
- Optimal migration strategy for each application
- Right-sized cloud infrastructure
- Estimated monthly cloud run cost
- Migration timeline based on application dependencies



Cloud Migration Process

Migration Input

- Cloud Migration Assessment
 - Target Cloud Service Provider Selection
 - Defined Migration Waves
 - Application Dependencies
 - Right Sized Target Infrastructure Instance Sizing
 - Migration Strategy
- Secure Target Cloud Landing Zone Deployed
- Network Connectivity from Source Environment to Target Cloud Environment

Cloud Migration Processes

1. Planning

- Migration runbook created
- Definition of application non-functional requirements (NFR)
- Application high-level designs
- Migration licensing impacts
- Legal & commercial assessment
- Required tags confirmed
- Testing approach agreed

2. LLD & Build

- Application low level design
- Target environment infrastructure design and build
- Third parties engaged as needed

3. Migration Prep

- Data migration initiated
- Runbook finalized with testing:
- Non-Functional testing
- Functional testing
- Operational readiness testing
- Defects identified and communicated to iVision
- Service Delivery Manager

4. Migration Execution

- Data migration completed
- Runbook executed
- Testing and validation completed
- Traffic cut-over to cloud deployment/version

5. Handover to Operations

- Hypercare support
- Operational Onboarding
- Commence decommissioning processes

Migration Management, Reporting, & Backlog

Key Outcomes

Application high-level design & target architecture, testing approach confirmed

Detailed design, infrastructure built in cloud

Data replication initiated, Runbook completed

Application live in target environment & fully validated

Source infrastructure decommissioned

Migration Gates

Migration Timeline Agreed

Design Approval

Build Review

Runbook Review & Data Migration In Progress

Validation & Testing Complete

Transition to Support



1430 Peachtree St NW, Ste 425
Atlanta, GA 30309



678.999.3002



www.iVision.com