

# GEOBUSINESS FOR MICROSOFT DYNAMICS 365

## FIELD SERVICE MANAGEMENT

GeoBusiness for Microsoft Dynamics 365: Field Service Management extends Microsoft Dynamics 365 with a complete workflow, including route optimization. It is a single source of truth for companies who deliver, manage, and repair assets.

Field Service Management is for companies who require seamless real-time workflows between Microsoft Dynamics 365 and field service operations.

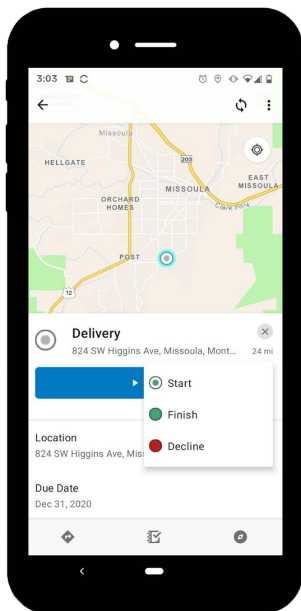
With GeoBusiness, dispatchers in can ensure optimized routes for regularly-scheduled maintenance visits or impromptu repair calls. Further, a drag and drop scheduler makes it simple to update schedules as needed.

From the mobile interface, drivers have access to asset maintenance history, and can update the status of jobs as they progress throughout their day. **All of this progress is visible in real-time to managers in the back office through an Operational GeoDashboard.**



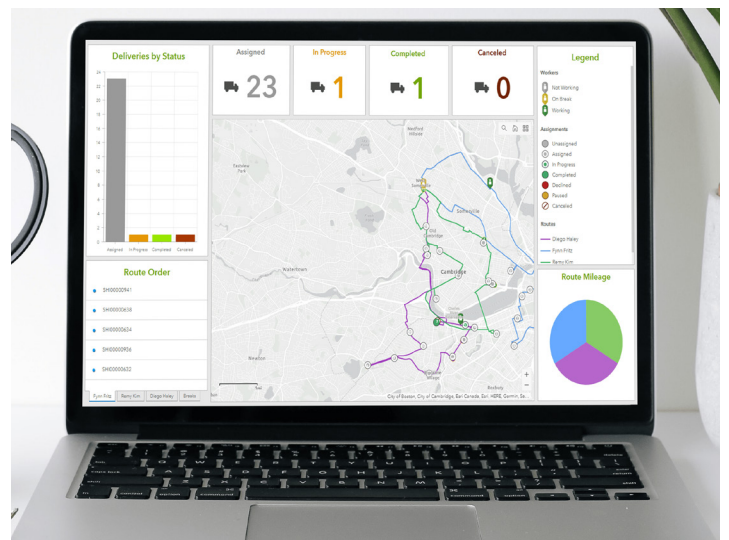
# FEATURES

- Field visibility
- Workflow flexibility
- Real-time connectivity
- Mobile field service apps with offline capabilities, compatible with Android and iOS.
- Flexible drag-and-drop and multi-vehicle optimized routing.
- Field Service Management digital transformation. Replace unreliable paper-based data collection with a trustworthy digital solution that fits the needs of personnel in diverse environments.
- GeoBusiness Field Service Management is built specifically and solely for Microsoft Dynamics 365.



# BUSINESS SOLUTIONS

- Ensure field and office staff are using the same authoritative data.
- Use real-time dashboards to inform decisions and evaluate key performance indicator metrics.
- Improve sustainability metrics by reducing or replacing reliance on paper.
- Add the power of mobile apps for critical functions such as data collection and route optimization.
- Gain a location-based perspective on real-time field activities and use visually rich dashboards to inform decisions.
- Know where assets are and monitor changes in real time.
- Visualize people, places, and assets to gain a clear understanding of all operations in the field.



# ABOUT US

GCS is a geospatial IT services firm located in Missoula, MT. GCS has been an Microsoft and Esri Business Partner for over 20 years. GCS specializes in integrating Enterprise Microsoft systems with Esri ArcGIS. Contact us to learn more about GeoBusiness.

