



Memorial Hospital And Health Care System

Helping Build Development Infrastructure in Azure

ostusa.com/contact



THE PROBLEM

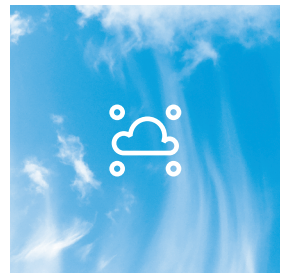
In February 2020, OST was introduced to Memorial Hospital — a regional hospital that had just made the decision to migrate their EHR to Epic. OST helped Memorial Hospital understand the infrastructure impacts of implementing Epic and produced an initial design. Unfortunately, just after signing with Epic in early March, 2020, COVID-19 shutdowns threatened to delay the entire project as new hardware lead times increased to nearly six months.

Memorial Hospital began their Epic implementation project in March 2020 and their planned go live date is July 1, 2021.

OUR SOLUTION

To keep the project moving forward, OST implemented Memorial Hospital's entire Epic development environment in Microsoft Azure in about one month, keeping the Epic implementation project on track. OST is now building out the Epic production infrastructure in their on-prem data center and the Epic DR environment in Azure. OST Managed Services is administering all of Memorial Hospital's cloud infrastructure to all their staff to focus on the Epic project.

OST has incorporated best practices from Microsoft's Cloud Adoption Framework as well as Epic's Reference Architecture for Epic on Azure into an OST blueprint written in Terraform and provisioned using Azure DevOps CI/CD pipelines. By using infrastructure-as-code, future Epic environments can now be implemented in hours versus weeks.



ADVANTAGES OF THE CLOUD ON THE FOLLOWING PAGE →

ADVANTAGES OF THE CLOUD

Epic infrastructure is complex, costly, and challenging to manage, especially disaster recovery infrastructure that is rarely if ever utilized. Implementing Epic infrastructure using cloud services provides the following advantages:



Cost

Leveraging the on-demand capabilities of cloud services, Epic DR and non-production infrastructure costs can be significantly reduced because cloud services are only paid for while in use.



Velocity

Cloud infrastructure services can be implemented immediately, rather than waiting weeks for hardware to be shipped and provisioned. Additionally, using automation and Infrastructure-as-Code, Epic environments can be implemented in hours versus weeks or months.



Simplified Management

Epic infrastructure can be run on cloud services without the burden of managing physical data centers, hardware infrastructure, and the never-ending lifecycle management.