

Sumo Logic enables you to support your Azure apps

Ensure exceptional customer experience by eliminating application downtime. Secure apps with built-in machine-learning and simplify compliance requirements.



Full Azure visibility

Eliminate blind spots with full support for Azure apps, services, modern architectures and integration with your favorite tools.



App and infrastructure performance

Identify critical Azure application problems proactively by easily correlating performance issues with errors and failures. Get to the root cause quickly with pattern detection using machine-learning.



Security & compliance

Identify, correlate and prioritize threats faster and streamline investigation with security analytics. Maintain compliance with internal and external standards (PCI, HIPAA, GDPR etc.).

Monitor your Azure Stack

Monitor your Azure Stack

Sumo Logic provides a scalable, easily deployable, [serverless](#) solution to monitor Azure Services connected with Azure Monitor that supports both logs and metrics data from Azure.

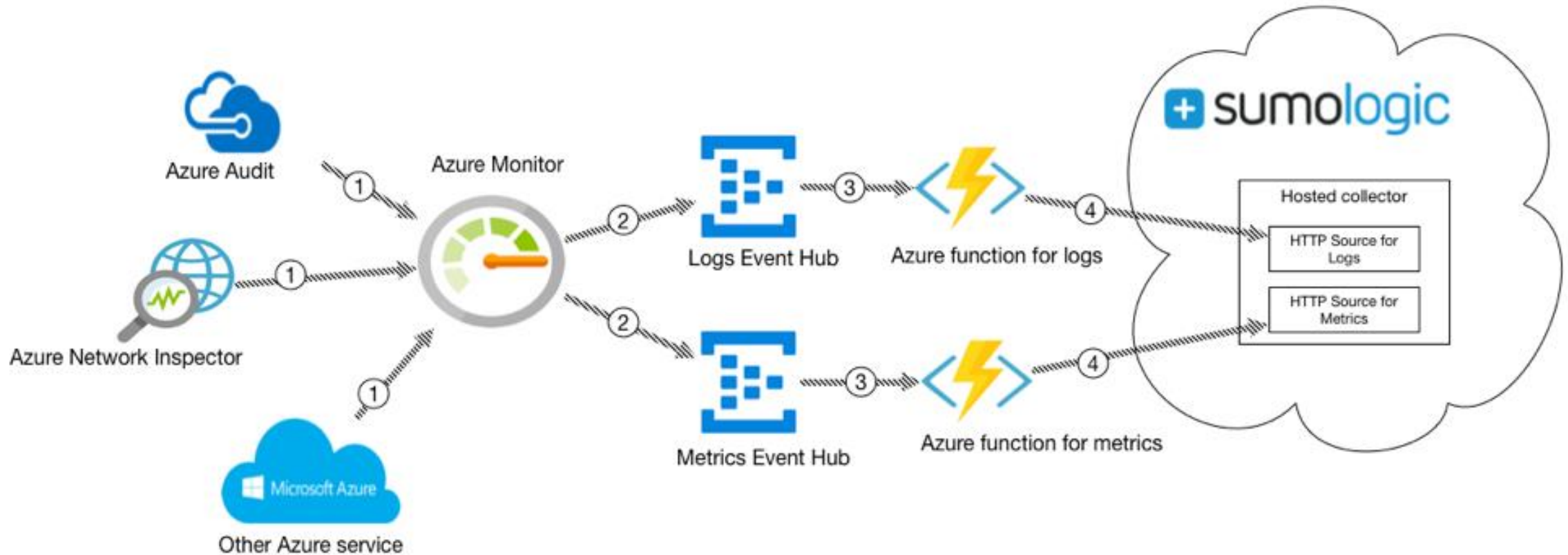
Use a Sumo Logic serverless solution to monitor your Azure Services, which relate to Azure Monitor/Event Hub. This Azure-Sumo Logic pipeline helps you integrate the following types of data from your Azure Services with Sumo Logic.

- **Activity Logs** — Activity Logs are subscription-level logs that provide insight into the operations performed on resources in your subscription, for example, creating a virtual machine or deleting a logic app.
- **Diagnostics Logs** — Diagnostics Logs are resource-level logs that provide insight into operations that were performed within a resource itself, for example, getting a secret from a Key Vault.
- **Metrics** — Metrics provide performance statistics for different resources and the operating system in a virtual machine.

Deployment Architecture

Pipeline Components

- **Azure Monitor** — Collects logs and metrics from most Microsoft Azure services and serves as pipeline for accessing to monitoring data from an Azure environment.
- **Azure Event Hubs** — Azure Monitor streams monitoring data to an event hub which triggers a Sumo Logic provided Azure function.
- **Sumo Logic Azure Functions** — Small pieces of code that are triggered by an Event Hub to send monitoring data to a Sumo HTTP source.
- **Sumo Logic HTTP source** — Receives and ingests the monitoring data from the Azure function.



Explore our features

Deep integration with Azure Cloud

- Simple integration with Azure Monitor and Event Hub and out of the-box content provides visibility into Azure Audit, Network Inspector, SQL, Active Directory, and more.



Microsoft Azure Audit



Microsoft Network Inspector



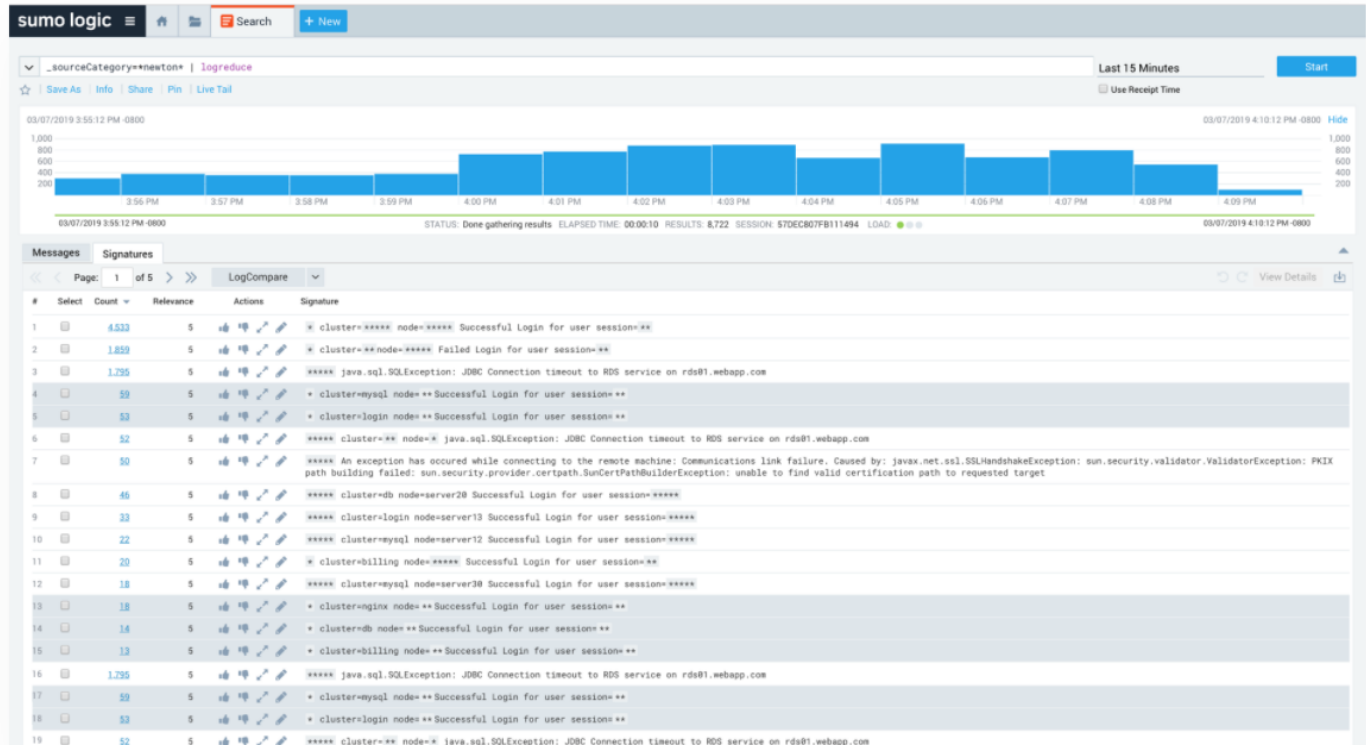
Microsoft SQL



Microsoft Active Directory

Machine learning with LogReduce pattern analysis

- Boil down thousands of log lines into easy-to-understand patterns with Log Reduce and Log Compare. Separate the signal from the noise and detect anomalous behavior with outlier detection.



Data privacy and sovereignty

- Satisfy local data sovereignty and privacy requirements with Sumo Logic's worldwide deployments including Europe, Asia, and the U.S.



Popular Azure management apps



Azure Audit

Feed your Microsoft Azure Audit Logs and Active Directory information into the Sumo Logic service to track and monitor your Azure infrastructure for operational and security insights. Within minutes, receive real-time alerts on suspicious user activity.

[View app](#)



Azure Web Apps

Ingest your Azure web server and application diagnostic logs directly into the Sumo Logic continuous intelligence service to monitor and visualize the health of your Web Apps environment.

[View app](#)



Azure SQL

Understand the health and performance of your Azure SQL Databases.

[View app](#)

Sumo Logic Apps for Azure

Sumo Logic also provides an Azure Apps Catalog, which gives you visibility into your full Azure stack without having to parse individual logs and write complex query.

These apps provide out-of-box dashboards to monitor your Azure Stack and helps you run your applications into Azure smoothly.

Currently, [Sumo Logic supports](#) Azure Audit, Azure Active Directory, Azure Network Watcher, Azure SQL Database, Azure Web Apps and Microsoft Office 365.

App Catalog

Apps help you get started gaining insights from your data source by providing example searches and dashboards for common use cases. Feel free to edit them as you need to get the results you want.



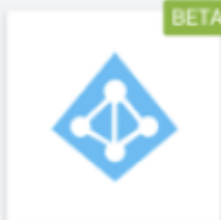
All Categories

Amazon Web Services

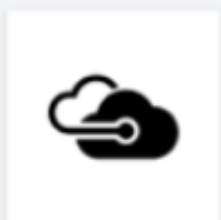
Compliance and Security



Active Directory



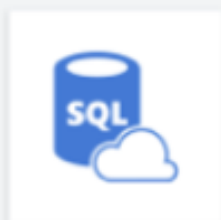
Azure Active Directory



Azure Audit



Azure Network Watcher



Azure SQL



Azure Web Apps



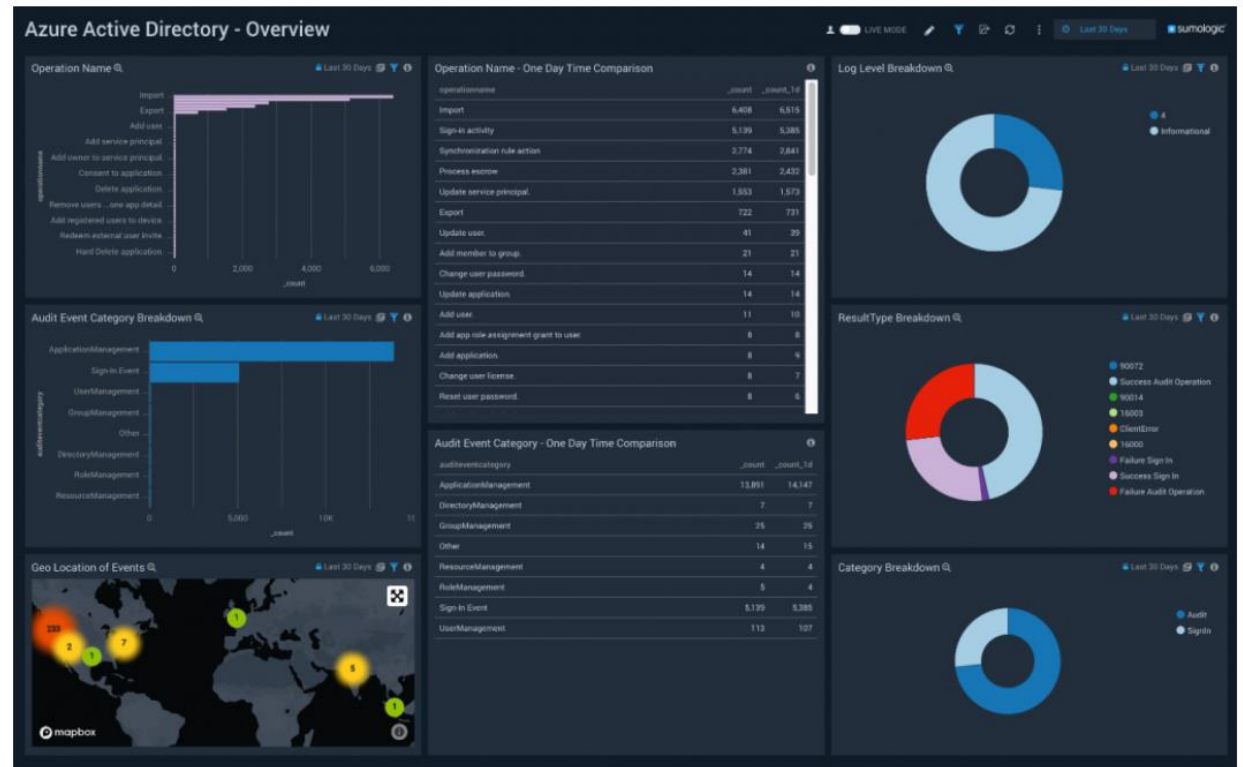
Microsoft Office 365

The Sumo Logic App for Azure Audit allows you to collect data from the Azure Activity Log (formerly known as Azure Audit logs) and monitor the health of your Azure environment. The App provides preconfigured Dashboards that allow you to monitor resource usage, service health, and user activity.



Azure Active Directory

- [Azure Active Directory](#) is a cloud-based directory, and identity management service that allows for directory services, application access management and identity protection. The Sumo Logic app for Azure helps you monitor activity in the Azure Active Directory. The dashboards provide insight into role management, user management, group management, successful and failure sign-in events, directory management and application management data that helps you understand your users' experiences.



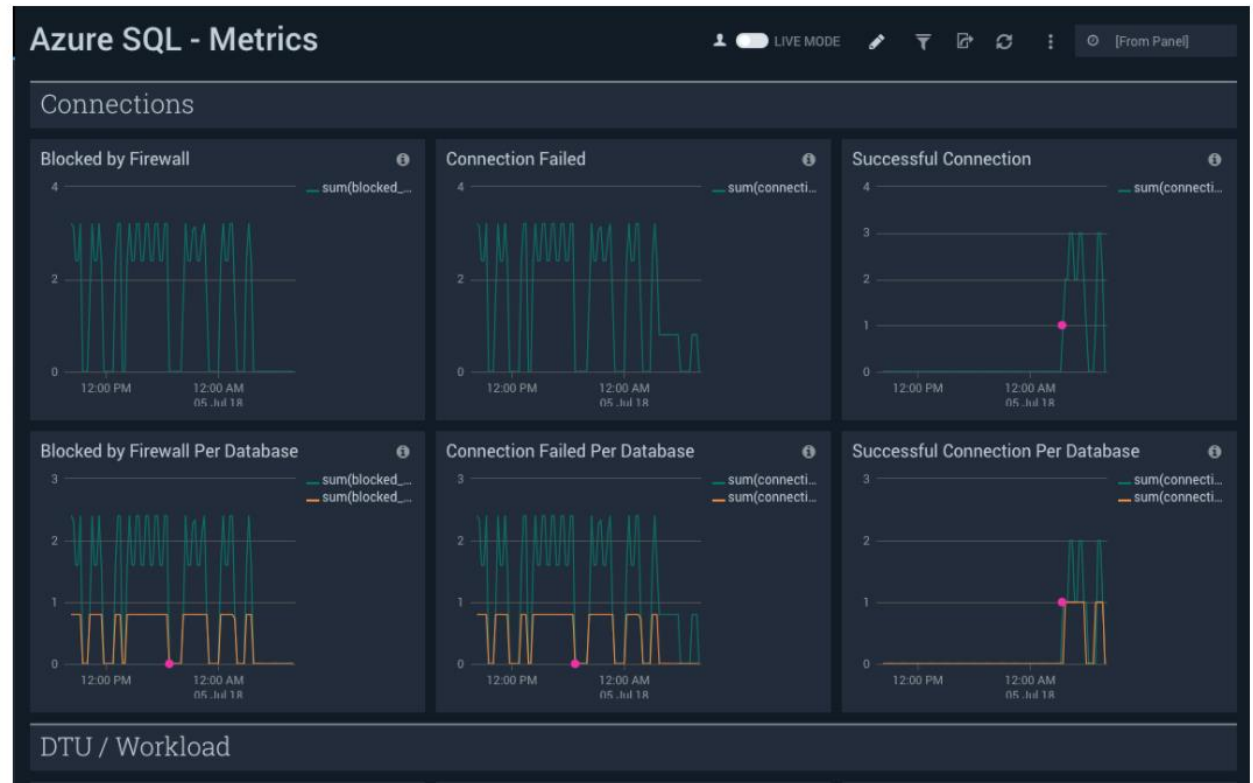
Azure Network Watcher

- [The Sumo Logic App for Azure Network Watcher](#) leverages Network Security Group (NSG) flow logs to provide real-time visibility and analysis of allowed and denied network traffic patterns in your Azure Network that enable you to troubleshoot traffic and improve your overall security posture. This App provides preconfigured dashboards that allow you to monitor inbound traffic, outliers in traffic flow, and denied traffic flows.



Azure SQL Database

- [Azure SQL Database](#) is a managed relational cloud database service. The Sumo Logic app for Azure SQL detects anomalies, reduces MTTR and helps you improve performance via preconfigured dashboards that provide insight into resource utilization, blocking queries, database wait events, errors, runtime execution stats, and other database analytics.



Azure Web Apps

- [The Sumo Logic App for Azure Web Apps](#) allows you to collect Azure web server and application diagnostics logs and monitor the health and performance of your Azure Web Apps environment. The App provides preconfigured Dashboards that allow you to monitor server operations and web traffic trends by response times, errors, and client types and locations.

