

INTRODUCING

Cost, Security, Licensing, Identity Management

Advanced Insights and Analytics for
Microsoft Cloud Services
– improved decision making

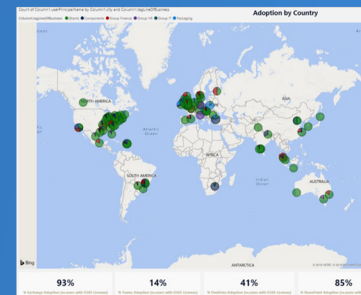
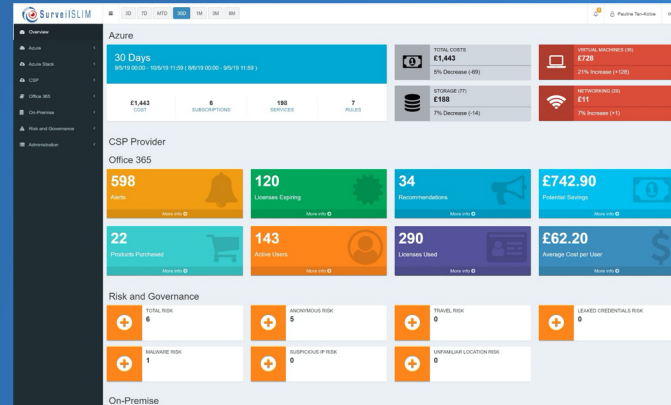
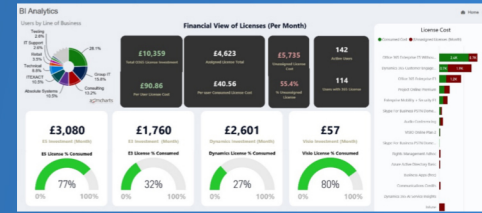
WHAT'S INSIDE



Office 365 Cost, Security,
Licensing and Identity
Management



Azure Business based Cost
Management



Surveil Features

Feature Name	Core Functionality
Multi-Tenancy	Secured Multi-tenant platform
Scalable	Micro Services Architecture
Secure	Azure AD Authentication
Modern and Custom Analytics	Leveraging one of the worlds most advanced analytics engines – PowerBI
AI Tagging Engine	Automated and Manual Tagging
On-premise Integration	On premise Asset and configuration details
Digital Boardroom	Click and point large digital screens - via a PC, presentaion or within the boardrooms.
API	Full set of REST API data points that can be interfaced to any of your existing systems
Partner Portal	Single management portal for all customers
Risk & Governance	Get service status alerts & report governance compliance like PCI, ISO27001 & CIS

O365

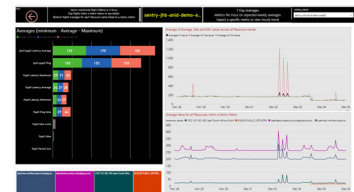
Overview	Supports Traditional EA
	Supports CSP (Provider, Direct Customer or Reseller/Customer)
	New Microsoft MCA support
	Dynamics 365 supported
	All license SKU usage views
	Dashboard views
	Embedded Analytics Engine
	AI deep analysis
Dashboard Summary	Self Attestation Engine
	Scenario Viewer
FinOps Dashboard	Period Cost Comparator
	EA Yearly Summaries
	Reservation automation
	CSP Pricing automation
	12 Month Cost View
Recommendation Engine	Detailed Analytics Views
	AI Recommendations Engine
	Complex recommendations
	Inactive user engine
Alerting Engine	View recommendations on cost saving with the ability to automatically take action
Devices	Alerts sent anywhere and on just about any condition
Groups	Detailed views of all devices being used via Azure AD. Get to grips with your BYOD.
Users	Full views and details about various classes of groups and what they are being used for (or not)
Joiners/Leavers	Rich metadata about all accounts - not just O365 accounts
Usage Overview	We help your IT and HR work together
	Overview and detailed Analytics
Planning Analytics	Details for Office services
	License Analysis
	Plan Analysis
Modern Workplaces	SKU Usage Analysis
	Overview
	Overview maps
	Business Maps
	Productivity Trends
	Risk trends, management, and reduction
	COVID 19 Risk Management
C-Level Dashboards	COVID Employee Data
	Overview Dashboards
	Consumption Summary
	Adoption Summary
	Regional Summary
	Financial Summary
	Joiners and Leavers
	EA and EAS Financial Operations
	3rd Party Applications Trend and overview
	Device and Mobile Summary
	Heatmaps

Surveil Features

Azure	
Overview	Cloud Hosted Resilient Service
	PAYG Subscriptions
	Enterprise Agreement (EA) Subscriptions
	Dashboard Views
	Analytics PowerBI Embedded Reporting
	Visibility to Azure metrics
	Azure technical categories breakdown
	8x5 Support
	Third Party API Integration
	Custom Tags
	Business budgeting-based rules
	Custom categories
	Rules automatically applied to nested resources
	Customised currencies
	Supports Azure Active Directory
	User Management (unlimited) - Azure AD integration
Dashboard Summary	Monitor creation of external facing IP addresses
	Monthly Azure bill costs
	View costs on a daily basis
FinOps Dashboard	Azure Meter Categories 12-month Reports
	Yearly cost forecast
	Minimum 12-month history
	Business Categories 12-month Reports
Recommendation Engine	Detailed breakdowns per business categories
	Cost Reduction AI Engine - 11 Categories
Alerting Engine	New Services Alerts
Planning Analytics	Resource Planner for monitoring of assigned tasks

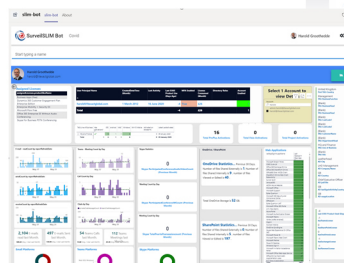
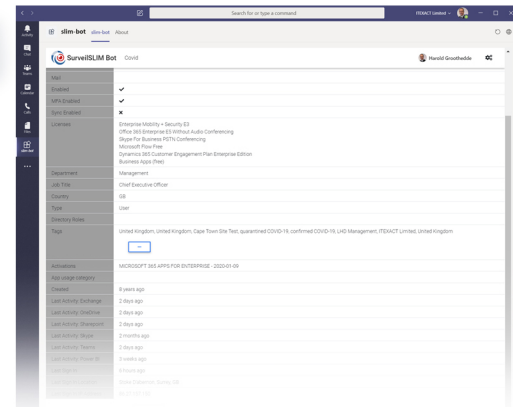
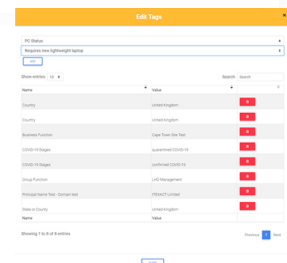
Sentry Agent

- **Leverage the same Business Categories for your On-Premises (Edge) Assets**
 - Users,
 - PC's & Laptops,
 - Servers & other Edge Hosting Platforms
- **Present Detailed Costs to your Business's for Azure, Office 365 and On-Premises Resources**
- **Management Capability Leveraging Surveil HCM Modules**
 - Wifi quality
 - Network Quality Management
 - Device Camera AI
 - Control Bluetooth Devices etc.
- **Ideal solution to manage end-to-end home environments – enhanced control on your contact center agents for example**
- **Control end devices**
- **Enhanced Security – especially for home workers**
- **Compliments Intune where used**
- **Management of Microsoft Identity Manager Environments (MIM)**
- **Connect and enhance Sentinel services**



Teams BOT

- **Teams App provides direct access to Surveil data and Analytics**
- **Ability to enter TAG information**
 - View specific Power BI Analytics Reports directly in BOT
- **Ability to choose user account as part of support call**
- **Add custom tags to users (e.g. COVID status, Requires Teams Training, Requires new Laptop, etc)**
- **Extensive Support information summarized to users**
- **Can be manually installed or configured at Enterprise level**
- **BETA presently – full release end July**

Tag	Value	Source
COVID	Unconfirmed	Surveil
COVID	Confirmed	Surveil
COVID	Unconfirmed	Surveil
COVID	Confirmed	Surveil
COVID	Unconfirmed	Surveil
COVID	Confirmed	Surveil
COVID	Unconfirmed	Surveil
COVID	Confirmed	Surveil
COVID	Unconfirmed	Surveil
COVID	Confirmed	Surveil