

# Automation Readiness Assessment

---

Offering Deck





# ARA Output

Our Automation Assessments provide the foundation for the automation programmes.



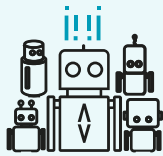
## What is the size of the prize?

Quantify the total value of RPA within the group



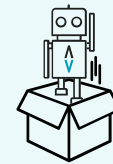
## Support model (CoE v MSP)

Enable you to make informed data-driven decisions



## Delivery roadmap

Prioritise process delivery roadmap



## Programme cost

Informed decision making about future investment



## Technology recommendation

Picking the best technology for you



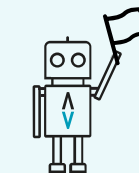
## Licenses

Dictate how many licenses you will require



## Core fix vs RPA

Where do our quick wins exist



## Ancillary tech recommendations

Does OCR, Chat, NLP have a part to play

# Automation Roadmap Assessment

## Phase 1: Readiness

# 1

READINESS

# 2

ENGAGE

# 3

ANALYSE

# 4

DELIVER

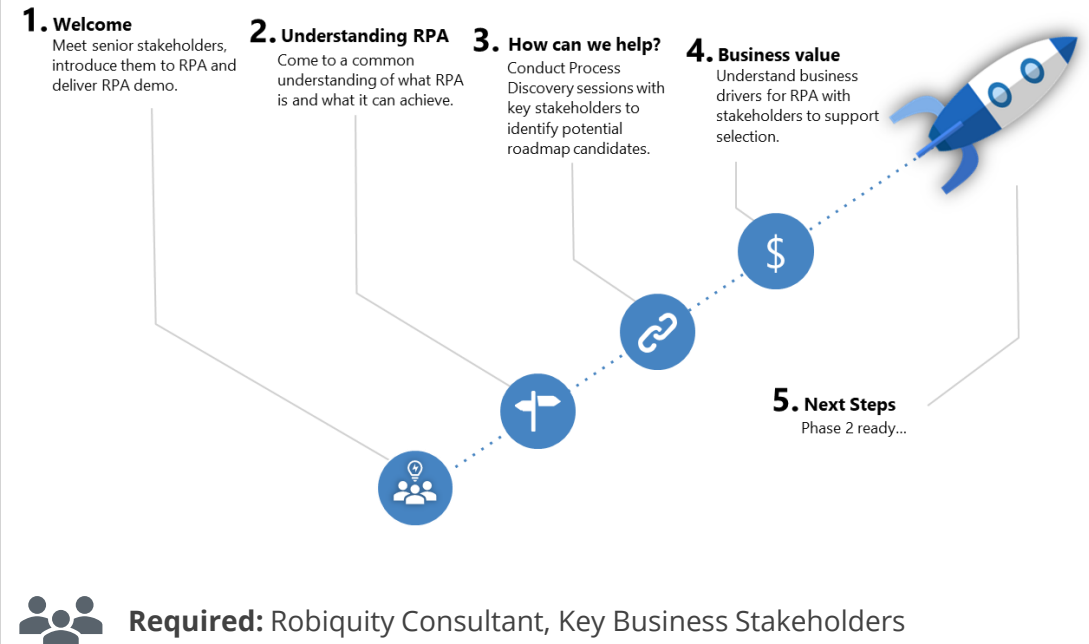
### Detail

Robiquity introduce the business to RPA and understand which business departments and processes could yield the most benefit, in line with current business drivers. Management workshops are hosted to agree the scope for the upcoming assessment.

#### Key outcomes include:

- Agree business drivers for RPA.
- Engage key stakeholders.
- Strategically identify processes and agree scope.
- Plan engagement.

### Conceptual Diagram



# Automation Roadmap Assessment

## Phase 2: Engage

# 1

READINESS

# 2

ENGAGE

# 3

ANALYSE

# 4

DELIVER

### Detail

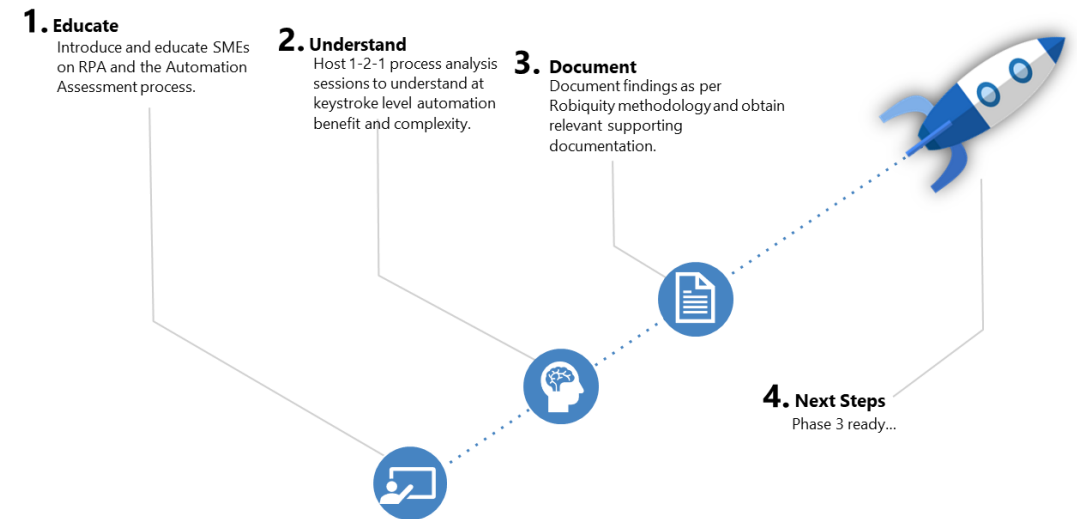
In Phase 2 Robiquity will introduce SMEs to Intelligent Automation and the Assessment Process.

Robiquity will host 1-2-1 process assessments to understand at a key-stroke level your business opportunities.

#### Key outcomes include:

- Educated and engaged business SMEs.
- Key processes understood at key-stroke level.
- Supporting documents obtained.
- RPA evangelised throughout departments.

### Conceptual Diagram



**Required:** Robiquity Consultant, Business SMEs

# Automation Roadmap Assessment

## Phase 3: Analyse

1

READINESS

2

ENGAGE

3

ANALYSE

4

DELIVER

### Detail

Using the data collected in Phase 2, Robiquity will understand and analyse data captured to prioritise development based on business benefit vs complexity. We will work collaboratively with the business on this.

#### Key outcomes include:

- Analyse data captured onsite.
- Understand business benefit and automation development complexity.
- Strategically prioritise business processes based on business drivers, benefit and complexity.

### Conceptual Diagram

#### 1. Analyse

Revisit data and documents obtained onsite and analyse business processes. Communicating with the business as required.

#### 2. Quantify

Understand business benefit vs automation complexity in order to prioritise processes against the automation roadmap.

#### 3. Prioritise

Considering business drivers, Robiquity are tasked with strategically recommending most suitable RPA candidates.

#### 4. Next Steps

Phase 4 ready...



**Required:** Robiquity Consultant



# Automation Roadmap Assessment

## Phase 4: Deliver

1

READINESS

2

ENGAGE

3

ANALYSE

4

DELIVER

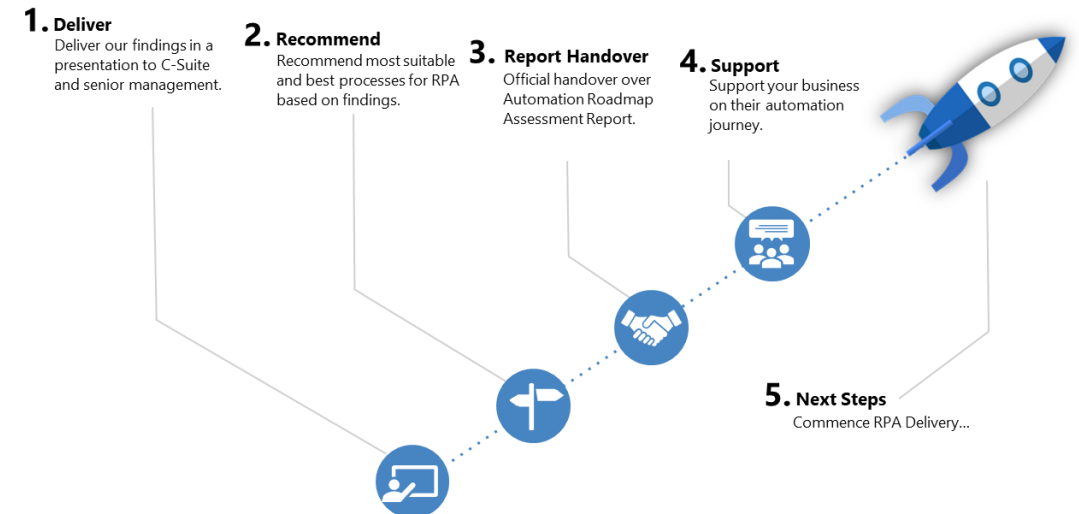
### Detail

Robiquity will provide the business with a report detailing our findings, presented at C-Suite.

#### Key outcome includes:

- Automation Roadmap Assessment and Recommendations report.
- RPA Phase 1 delivery proposal.
- Client support to kick-off and accelerate your automation capability.

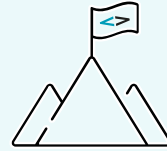
### Conceptual Diagram





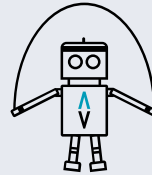
# What we deliver

Figuring out the days required based on estimations from the client



## C-Suite Engagement

Top down messaging & confirmed scope of assessment within the ARA readiness phase



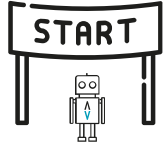
## SME Engagement

Process subject matter experts will be required to be engaged to complete IPA sessions and support playbacks



## A Common Plan & Goal

Collective plan to achieve our automation goals to ensure success

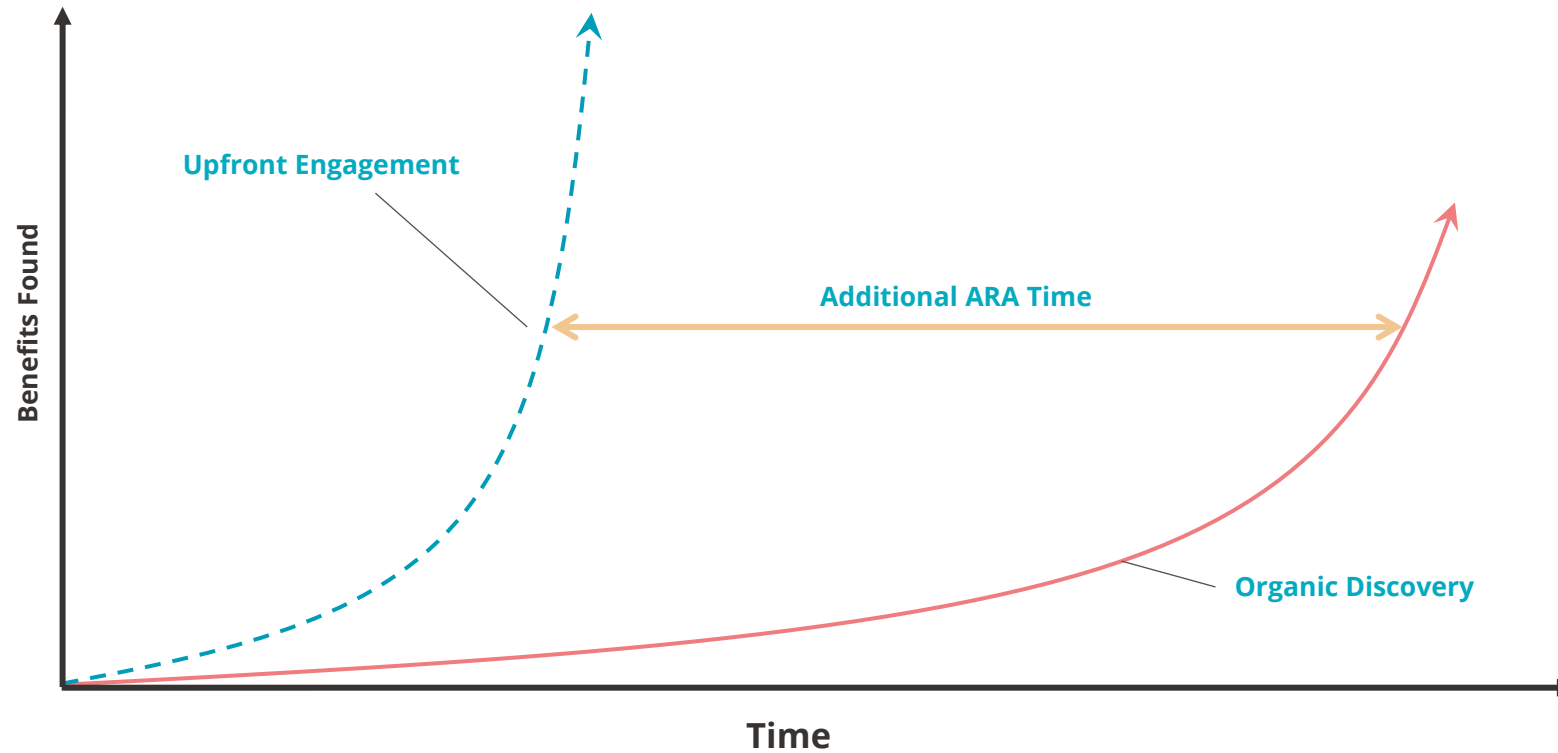


# Readiness

The need for readiness to ensure maximum impact of analysis and automation.

## The ARA is a data driven exercise

The more information we can get upfront will help streamline our approach







Typical Delivery

6 Months



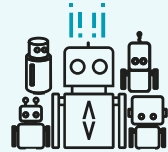
# Delivery Principles

Figuring out the days required based on estimations from the client



## Scope defined...

The ARA will define the scope of our initial delivery working closely with Pure Retirement to ensure the most suitable processes are selected



## Deliver at scale...

Happy-path deployments at scale to ensure rapid benefit realisation



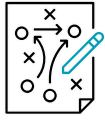
## Management information...

Bespoke dashboard solutions to present robot management information and track performance



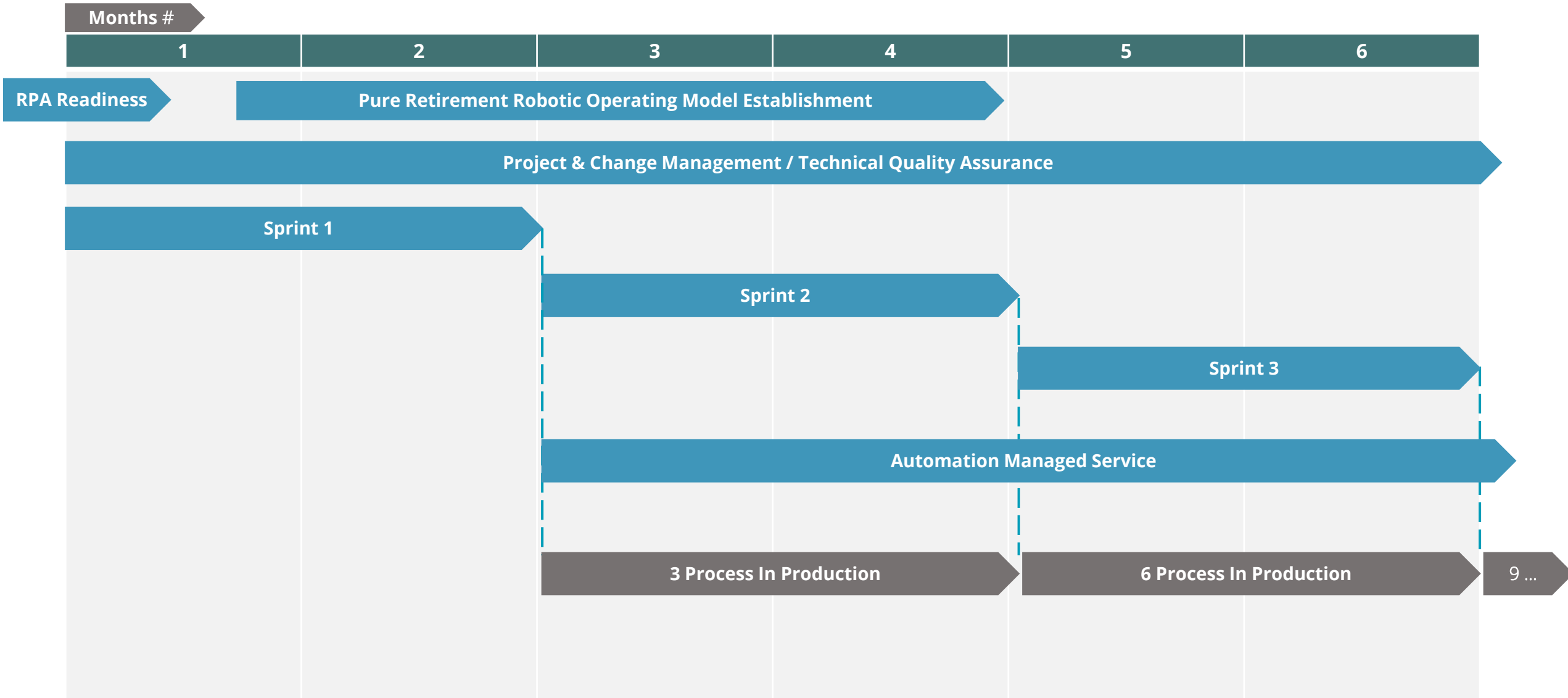
## Transition to managed service...

A fully supported automation programme resulting in a Robiquity Managed Service

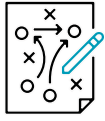


# Example Delivery Plan

An example 6-month delivery programme providing 9 medium processes.



**Assumption:** 8-Week Delivery of Medium Processes – 3 Development Resource Pods



# Example Delivery Plan

An example 6-month delivery programme providing 9 medium processes.

| Workstream                            | Term     | Monthly Run Rate                             |
|---------------------------------------|----------|--|
| Delivery Readiness                    | 6 Months | £60,000                                      |
| Robotic Operating Model Establishment |          |  |
| Development Pod (3 Developers)        |          |  |
| Project Management                    |          |  |
| Automation Managed Service            |          | Robiquity Investment During Initial 6 Months |
| <b>Total Fees</b>                     |          | <b>£360,000</b>                              |

- Exclusive of software licenses – Platform dependent
- Exclusive of VAT & expenses
- Budgetary figures, not capable of acceptance nor contract

# Thanks

Any questions? Get in touch.

> Fawaz Hassan

> [fhassan@robiquity.com](mailto:fhassan@robiquity.com)

> +447815951788

