

Enterprise Analyzer

Micro Focus Enterprise Analyzer delivers a wide array of tools and content to support better application understanding—from graphical CIO dashboards to granular developer programs and field insight. This static code analysis toolset, comprised of Enterprise Analyzer, Enterprise View and Business Rule Manager, also scales to manage complex, multi-million line-of-code application portfolios. Enterprise Analyzer use cases include Application Portfolio Management (APM), modernization portability and risk assessment, merger and acquisition, activity code quality, application development and maintenance, documentation, and business rule mining.

Business Challenge

Every major business process—from financial reporting to customer management—depends on software applications. They must be extremely efficient, highly stable, compliant and flexible enough to support new business requirements. But these applications have been developed over many years, across diverse environments, and enhanced under tight time pressures. Documentation is rarely current and system architects have often moved on. The complexity of these systems and limited insight into the application portfolio can lead to:

- **Poor management control:** Executives cannot assign resources to work on what matters most to the business
- **Slow turnaround on business needs:** Applications are too inflexible to be adapted quickly and without risk. In addition, business users and IT can't translate needs into development requirements
- **Inefficient development processes:** Global development teams spend up to 80% of their budgets on maintenance activities, diverting resources from the newer, high-value services the business demands

- **Inconsistency of information:** The ambiguity between the analysis and development phases inevitably leads to errors, increasing the cost of change and impact to the IT budget
- **Difficulty in selecting modernization projects:** Businesses recognize the value of modernizing their application portfolios, but cannot do so without the insight to prioritize and scope these high-value activities

How Enterprise Analyzer Can Help

Enterprise Analyzer is a comprehensive analysis solution aimed at enterprise applications. It enables a deeper understanding of application portfolios and provides centralized business and technical insight into core applications with information stored in a secure, centralized repository. This enables global IT teams to identify, prioritize and execute development activities that realign applications with current business requirements.

Key Benefits

Business users and executives can expect:

- **Improved governance:** Managers use intuitive dashboards to regain control of the business applications and tracking key performance indicators

Quick View

Enterprise Analyzer enables IT management, business analysts and developers to:

- Understand the value of mainframe applications
- Improve application quality by measuring and managing code change
- Demystify large, complex codebases and application portfolios
- Reduce the cost of application maintenance by 15%
- Deliver application development and modernization projects up to 40% faster
- Automate the discovery and documentation of hidden application logic
- Add code analysis and enforce coding standards as part of your Continuous Integration (CI) pipeline

- **Better business visibility:** Analysts, architects and executives get a business perspective on their applications

For architects, analysts, and development professionals:

- **Rich documentation creation:** To recover lost knowledge on even the most complex of applications. This supports development and design decisions while improving productivity
- **Improved team effectiveness:** Ease of use enables even new joiners to become 'instant experts', increasing effectiveness and confidence when making code changes
- **Delivery of quality applications:** Build or reuse queries to locate issues without disrupting stability
- **Accelerated modernization projects:** Isolates business logic into reusable components and helps re-architect systems, eliminating low quality or redundant code
- **Enterprise level scalability:** Manage complex application portfolios that include hundreds of millions of lines of code

Feature Overview

Enterprise-class application repository: Enterprise Analyzer is built on a powerful, enterprise-class repository that stores application information in a central location. Powerful administration tools enable:

- Remote access to mainframe source control systems synchronizing source modules into the repository on change
- Automatic repository updates to ensure this remains the 'source of truth' for development and analyst teams
- Integration with data coming from third-party sources such as HR and ERP systems

Comprehensive application support: Enables enterprise applications to be analyzed with support for:

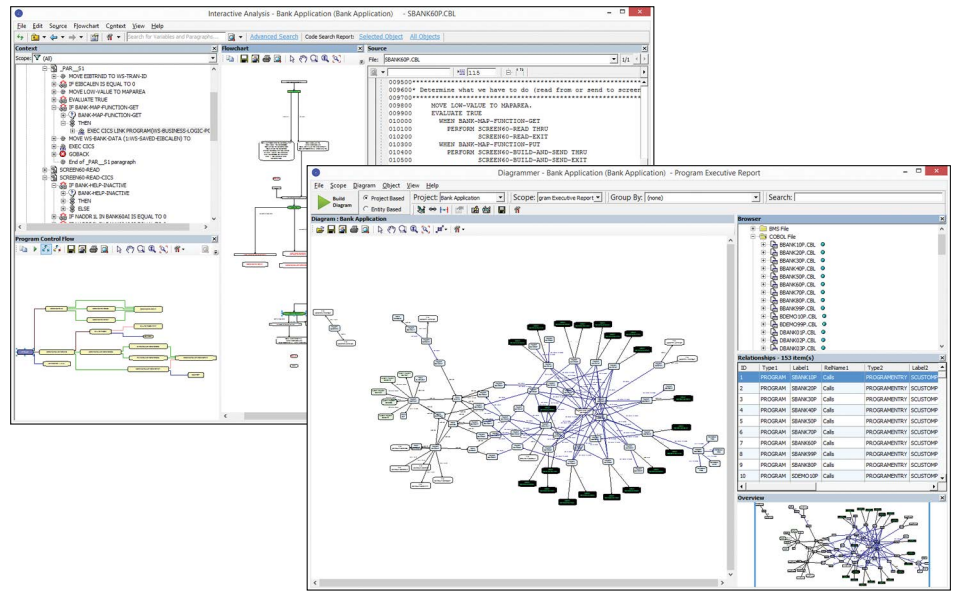


Figure 1. Interactive analysis and application visualization

- Multiple IBM mainframe, Micro Focus Distributed and other COBOL dialects
- Enterprise PL/I, JCL, IBM High Level Assembler and Natural Adabas, and JAVA
- CICS and IMS based applications including support for BMS and MFS
- Data access including QSAM, VSAM and RDMS primitives

Code slicing facility: Enables developers and architects to create new, re-usable components by separating business logic and computations into new callable objects. This allows simplifying programs complexity and exposing the needed logic for testing, documentation and creating new APIs from existing code.

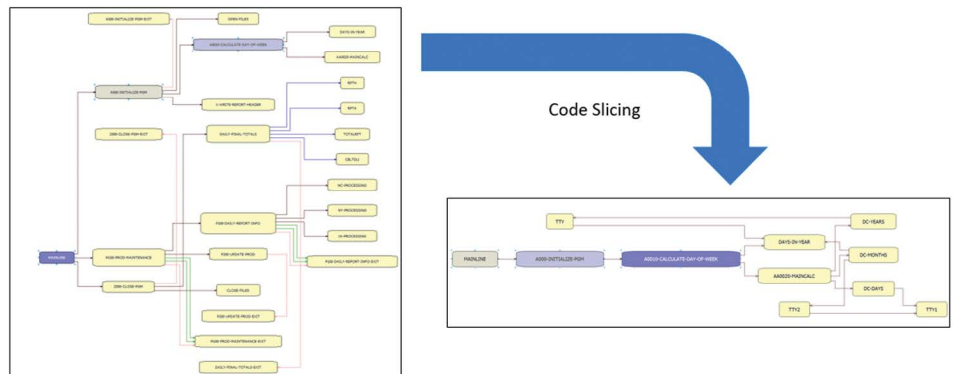


Figure 2. Powerful code slicing capabilities to create reusable components from existing business logic

In-depth analysis tools: Enable analysis of areas of interest within code and across the application portfolio including:

- Application and program level understanding using extensive metrics, reports, diagrammatic views and querying tools
- Comprehensive tools to analyze and determine the impact of making a change to an application inventory, tracing impacts through code, data, report and application interfaces
- Portability assessment to help assess portfolio inventory, key metrics and risk areas for application platform rehosting projects
- Quality assessment with standard code quality queries to serve as guidance to a code quality practice in both development and maintenance phases

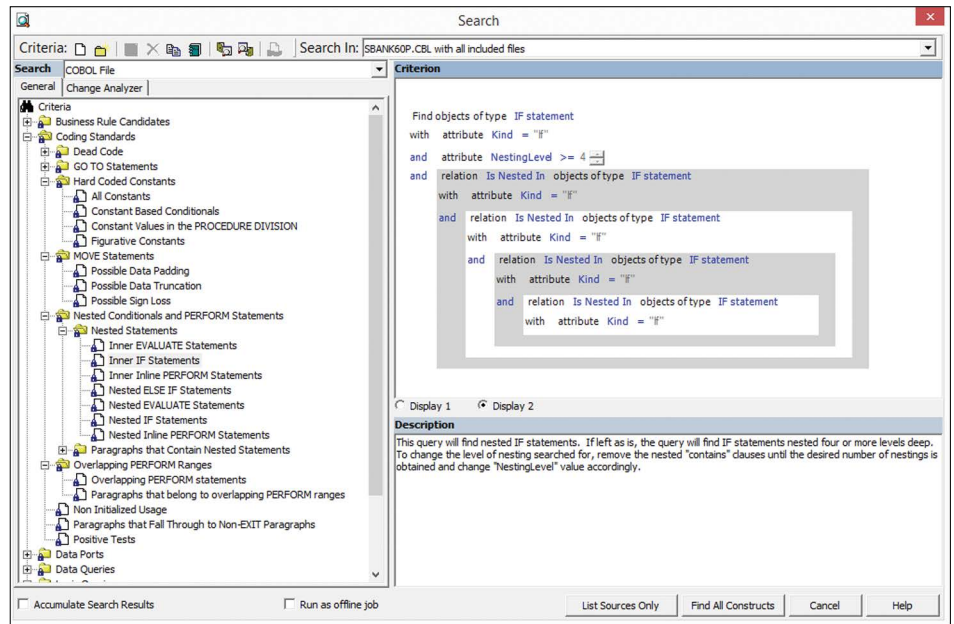


Figure 3. Pre-built query library that can be fully customized

Powerful query facilities: To locate areas of interest within code. A pre-built query library includes a rich set of common queries to provide a head-start when investigating common development tasks. These are fully customizable and the results can be shared with application developers to remove ambiguity when making code changes.

Application visualization: Rich, synchronized, always-current, and interactive visualizations ensure that developers can get up to speed on even the most complex applications by visualizing:

- How applications fit into the inventory and where the dependencies exist
- Program structure with fast navigation to areas of interest
- Program and data flow through an application and within source modules to trace the impact of change

Easily accessible application knowledge: Developers or any interested party have instant

access to application knowledge through an intuitive web interface. This powerful 'Google-style' search interface is accessible in

the available Enterprise Analyzer repositories. This means fast roll-out to development teams and ensures they have the knowledge

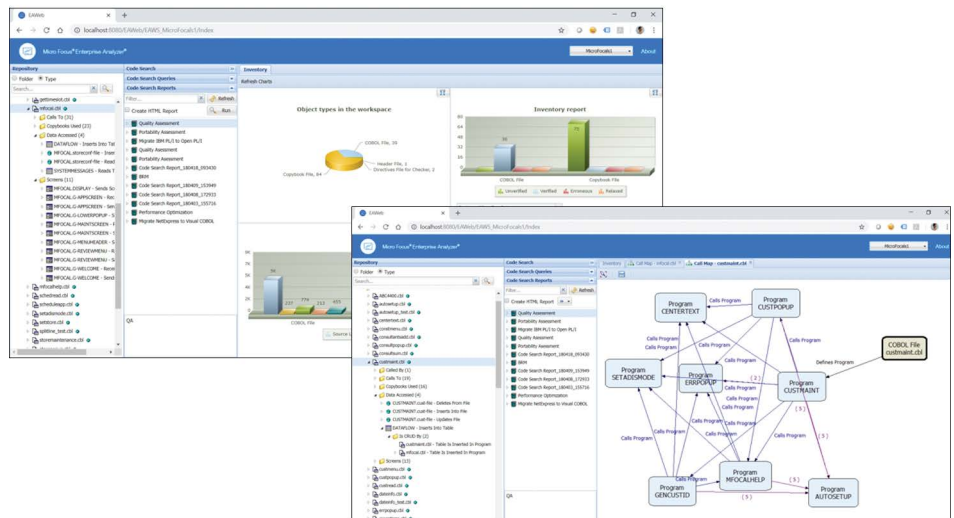


Figure 4. Fast access to knowledge through an easy-to-use web portal

“An in-depth analysis through Enterprise Analyzer revealed redundant code and unused processes. 50 percent of our code was deemed unnecessary and could be discarded. This was a great productivity benefit for us.”

MR FLORIAN KRÖNER

IT Director
BSQ Bauspar AG

Contact us at:
www.microfocus.com

Like what you read? Share it.



available to quickly and confidently make application changes.

Integrated to development tool chain: Built-in integration with Micro Focus Enterprise Developer. Batch interface and REST API available for integration with other tools as well as a Jenkins plugin for seamless integration to Jenkins.

Robust report capabilities: Generate reports to manage and monitor modernization projects, coding standards, quality metrics and much more. Enterprise Analyzer offers a highly customizable framework to create reports with the latest information to give you control over your projects.

Product Updates

Choose the right Enterprise Analyzer option to meet your requirements:

■ **Enterprise Analyzer Analyst Client:** Provides all the tools you need to build and maintain enterprise class repositories, plus the client tools to enable analysts to get a deep understanding of application and program architecture. Extensive metrics, reports, diagrammatic views and querying

tools support multiple business initiatives including M&A, business/IT alignment, application modernization, development and maintenance.

■ **Enterprise Analyst Developer Client:** Provides developers or anyone wishing to access application knowledge with a simple to use web interface. This enables them to search, query and extract information from a centrally maintained enterprise repository.

Two further Enterprise Analyzer options are available:

■ **Enterprise View:** Presents metrics and survey results in a graphical dashboard format, helping to guide portfolio management decisions

■ **Business Rule Manager:** Speeds the discovery and control of business rules within an application

Further details are available on specific data-sheets for these options.

For more information about Enterprise Analyzer, visit: www.microfocus.com/products/enterprise-suite/enterprise-analyzer/

System Requirements

Enterprise Analyzer server and client tools are available on the following 32/64 bit operating systems:

- Windows 7, 8, 10
- Windows Server 2012, 2012 R2, 2016 and 2019

Enterprise Analyzer repositories can be created using the following 32/64 bit RDBMS platforms:

- Microsoft SQL Server 2012, 2014, 2016, 2017 and 2019
- Oracle 10g/11g
- IBM DB 10.5+
- Out-of-the-box Microsoft SQL Server Express 2014 is also provided as an install option

Enterprise Analyzer web client access requires one of the following browsers:

- Firefox 3.6 or higher
- Internet Explorer 6 or higher
- Chrome 6 or higher