

OUR SOLUTIONS DELIVER NEW-FOUND INSIGHTS AND ANALYTICS & IMPROVE THE USER EXPERIENCE

Understand what's really happening in your building. The InnerSpace analytics measure performance so that you can test and validate decisions. Optimize your real estate usage, services and sales performance.

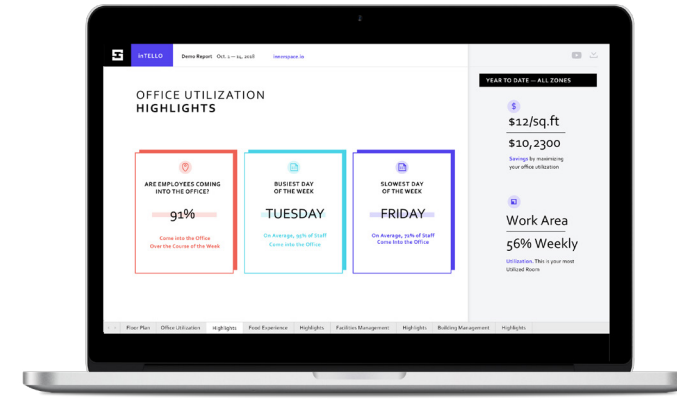
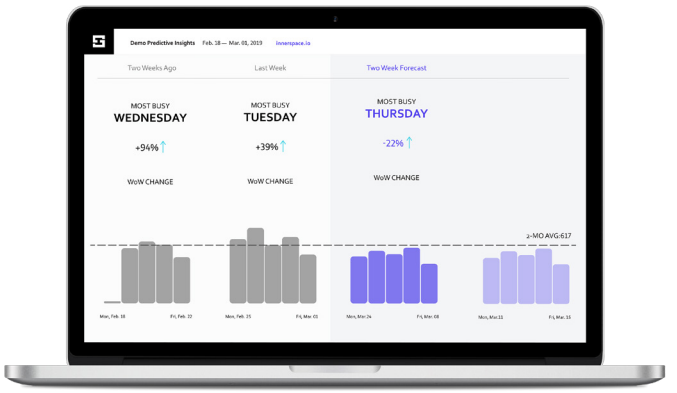
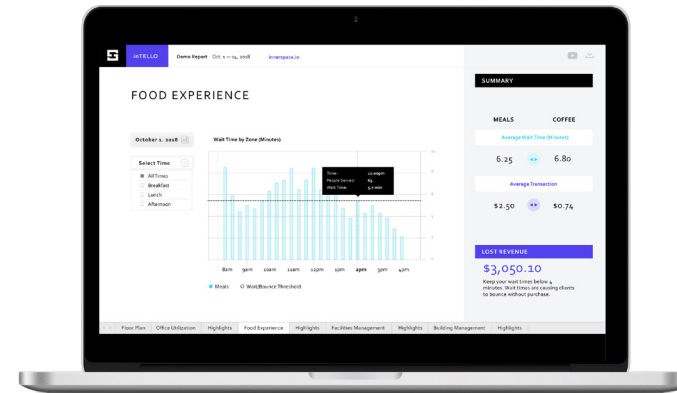
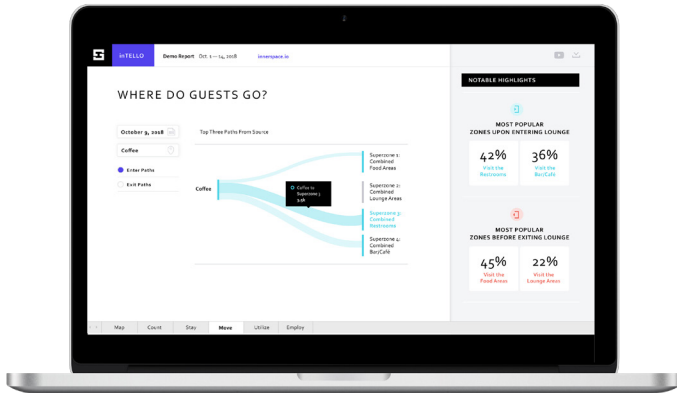
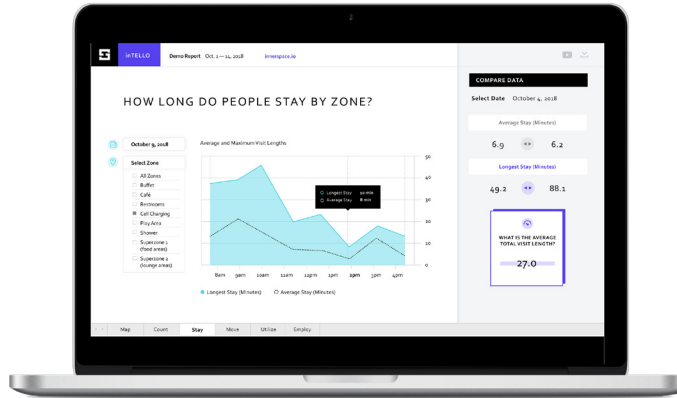
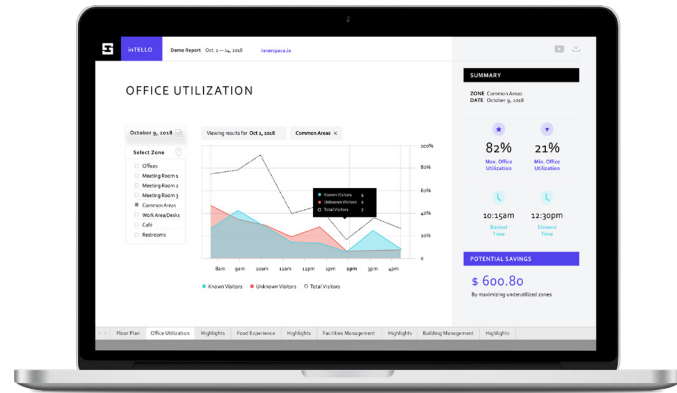
InnerSpace's cloud-based service receives raw, encrypted data measurements from our sensors and immediately anonymizes the digital identifiers to ensure personal privacy. These fundamental time-stamped location readings are processed into a variety of metrics such as zone level occupancy counts, utilization rates, dwell times, pathways and heat maps. This processed data is then made available to our web-based analytics and insights dashboard.



The InnerSpace analytics and insights dashboard is a data visualization tool for occupancy and space utilization analytics and reporting. Our analytics and insights dashboard is web-based and highly customizable to individual customer needs. Yet it is configured out-of-the-box with the most valuable metrics and insights based on our extensive market experience. Our dashboard reports detailed, accurate data on space utilization at the granularity of workstations, offices, meeting rooms or even neighborhoods in open concept workspace designs. This weekly analytics and insights can present aggregate utilization insights and hourly, daily, weekly or monthly level. Our analytics and insights dashboard helps facilities and real estate managers visualize and understand the real traffic pressures that different teams and spaces experience. This knowledge will empower any company to make confident, data-driven decisions about the need to invest or divest in new space or resources for various teams.

These fundamental location readings are stored for a minimum of one year before being archived to lower cost storage, where they kept in perpetuity. This allows for historical reporting, year over year comparison. More importantly, it drives accurate predictive modeling of expected occupancy and utilization for future weeks or months. This predictive data is invaluable for forecasting and planning purposes.

OUT-OF-THE-BOX REPORTING



Key Features

- + Measure how many people visit and how often
- + Assess traffic patterns and space utilization
- + Predict future behaviors and adjust operations
- + Compare zones and site performance
- + Summary of answered key questions such as “what’s the busiest and slowest day of the week?”, etc. These highlights are configurable