

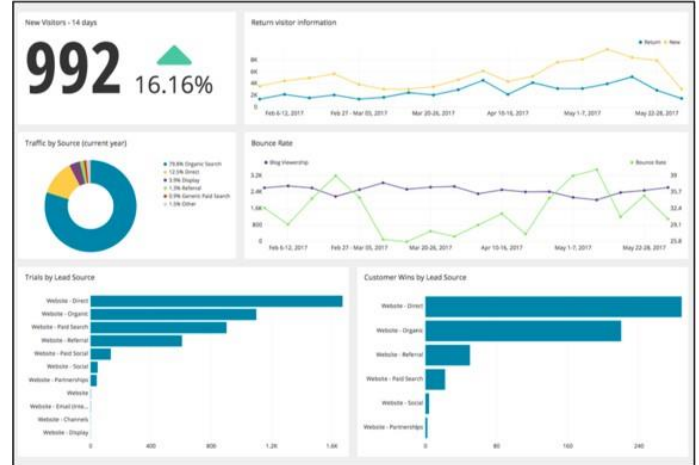
The Problem

A 2019 U.S. study cited nearly 567,715 adults were experiencing homelessness. That equates to 17 out of every 10,000 Americans.¹ The common pain points for those providing assistance:

- **Data Collection:** includes information about homeless encampments, vital resources, and populations at risk
- **Data Analysis:** critical for justifying future funding and resourcing needs
- **Provide Shelter and Critical Resources:** personnel supporting the homeless are essential connectors to shelter and community resources

The Solution

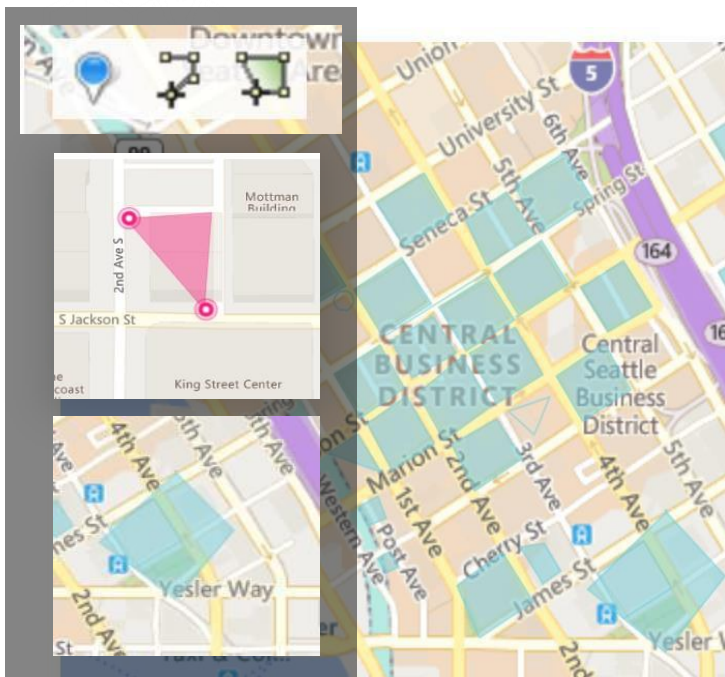
REVApp was built as part of a large U.S. City's Homeless Encampment Team outreach initiative. The solution centers around a digital application to connect the homeless with shelter and critical support resources, while removing unsafe encampments which posed public health risks from public property.



Highlighted Features

REVApp streamlines the collection of site visit and encampment data eliminating paper-based data collection while conveying real-time actionable insights.

- **Mapping and Geo-Fencing:** records accurate locations with appropriate naming conventions, eliminating duplicate records
- **Prioritization:** weighting conventions in-app aid in prioritizing highest risk locations
- **Follow-Up Services:** app workflows allow immediate coordination of services
- **Performance reporting:** drives transparency around areas for improvement
- **Information Security:** personal information collected is secure
- **Modular Services:** mobile and desktop applications allow practitioners, policymakers, and constituents to remain informed
- **Scalable:** designed to meet any agency and homeless stakeholder requirement



1. "State of Homelessness: 2020 Edition." National Alliance to End Homelessness, 20 May 2020, endhomelessness.org/homelessness-in-america/homelessness-statistics/state-of-homelessness-2020/.