

APPS FOR

GDPR



Apps for assessing compliance with new General Data Protection Regulations (GDPR), and managing actions to address areas of risk or non-compliance. **Apps for GDPR will reduce the likelihood of non-compliance and minimise the level of associated fines.**

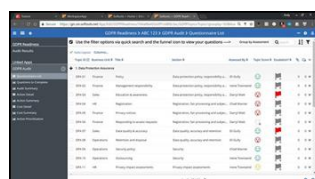
BUSINESS DRIVER

In April 2016, the European Parliament adopted a new standard to improve data protection for individuals within the European Union (EU). The GDPR does not simply apply to EU domestic business, but to companies worldwide that target their goods and services to European citizens. The deadline for compliance is 25-May-2018, and fines for non-conformance will be as high as **4% of global turnover** for the business.

SOLUTION OVERVIEW

This GDPR App Suite runs on the Softtools secure and scalable web platform, and delivers a portfolio of business process 'apps' to ensure compliance with the new GDPR standards:

- **Readiness Audit:** Organisation level assessment to confirm the current level of GDPR maturity and readiness to meet standards – including identification of areas of risk
- **Dataflow Audit:** Process level assessments to confirm levels of compliance for all workflows impacting client data – including identification of areas of risk
- **Risk Calculator:** Use of Monte Carlo scenario analysis to assess the level of financial risk associated with areas of non-compliance based on best | expected | worst case outcomes
- **Mitigation Register:** Application to plan, manage, track and report on actions to address areas of concern and to mitigate identified risks and associated financial impacts



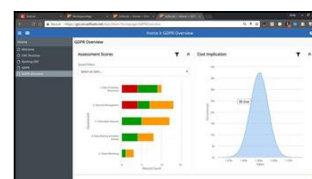
Readiness Profile >>



Scoring & Compliance >>



Summary Results >>



Dashboard & Monte Carlo

COOL FEATURES



Smart Businesses do things more effectively and efficiently than their competitors. They achieve this by designing processes that work better, faster and at a lower cost – enabled through **Smart Business Process Apps**. Furthermore, these apps will all run on a single common platform which is secure and scalable, enables single sign-on, supports the real-time exchange of data between apps, and offers a great common user interface and great user experience.

Emerging web technologies are also continuously introduced to drive competitive advantage such as:

- **Automated workflow:** driving activities in line with time, cost and performance expectations
- **Notification:** feeding key messages to users via email, SMS or slack
- **Drill down:** enabling performance reviews to be conducted real time
- **Mobile operation:** allowing busy managers to work anywhere, anytime, any device
- **Off-line capability:** supporting continuous operation in zero-bandwidth environments

SMART APPS ► SMART BUSINESS



As well as delivering a world-class web-application platform, Softtools differentiate from the competition by offering five core capabilities:

- Running multiple apps on a single platform
- Capturing and embedded industry best practices
- Creating and editing apps without the need for coding
- Ability to run on any device from PC to smart phone
- Option to deploy anywhere in the world in less than 2 hours



KEY FACTS

ACCESS

Access to the platform is via any modern browser (IE11, Edge, Chrome, Safari, Firefox, Opera+). The platform is mobile-optimised and so can be accessed on any device from PCs and tablets to Smartphones. Off-line capability is enabled using csv export and import routines, or linked-in native apps.

APPS COMPLEXITY

Applications can range from simple list-based stand-alone apps (e.g. Risk Register), to complex apps (e.g. Supply Chain Assessment) that are linked together, driven by workflow and synchronised to 3rd party systems via APIs.

APP BUILD

Certified AppBuilders use the integrated AppStudio to design, configure and deploy apps using a systematic process in hours and with zero coding.

BUSINESS CONTINUITY

The platform is used by many of the world's leading organisations and Governments, and so data is always held in a secure encrypted environment, controlled by clients and exported at any time.

DATA INPUT

CSV import is used to complete a one-off migration of client data during set-up. Then data is entered into the platform in 3 ways: 1) manual data input, 2) export / import via csv, and 3) real-time data synchronisation with 3rd party systems via WebHooks / APIs.

DATA VALIDATION

Data field parameters and logic based on field type will validate data input is consistent and complete. Specific fields can be set to be mandatory. Specific input forms can be visible or hidden using workflow based on user team or field values.

INFRASTRUCTURE

The platform is deployed in a web hosting environment as single-tenant or multi-tenant. Our default hosting partner is MS Azure and so deployments are instantly secure, scalable and stable.

INTEGRATION

The Softools API is a JSON-based (JavaScript Object Notation) RESTful API with authentication via "OAuth

2.0 Resource Owner Password" flow with support for refresh tokens.

LANGUAGES

The platform is configured to enable the dynamic translation feature in modern web-browsers (e.g. Google Translate). This allows users in different regions & countries to work on a common platform in their own language. It is also possible for App Builders to 'hard code' all system labels in local languages.

PERFORMANCE

Speed of access is largely determined by the bandwidth of local wireless & wired network connections or via 3G & 4G mobile networks. The size of the app will also determine how much data is transferred and will impact speed, as will the proximity of the database to the user (latency). Dramatic advances in web technology continue to enable faster data transfer speeds globally, and the potential to work off-line.

SCALE

The platform can scale from 1 app and user to 1,000s of apps and over 1,000,000 users for a single client.

SECURITY

Softools is used by banking, military and nuclear organisations world-wide and can be locked down to any level. Access to the platform is on a named user basis which determines what a user can see (security) and what they can do (permissions). Single Sign-On (SSO) is available as an option.

SUPPORT

Users gain first line support from on-screen help. Second line support is provided by internal Administrators. Third line support is provided to certified Administrators via phone, email and WebEx.

TRAINING

Users and App Builders are trained via webinars or in workshops using an 'action learning' approach:

Level 1 - Basic User (2 hours)

Level 2 – Super-Users / Administrators (+2 hours)

Level 3 – Site Administrators (+2 hours)

Level 4 – Basic App Builders (+ 1 day), and

Level 5 – Advanced App Builders (+ 2 days).



Microsoft Partner