



KONGSBERG

# VESSEL INSIGHT

## UNLOCK THE VALUE OF YOUR DATA

Access to quality data is one of the key challenges for digitalization in the maritime industry.

KONGSBERG is a leading automation and control system vendor in the maritime industry and has over 30 years of experience from delivering management information systems and as a system integrator in the maritime sector

Vessel Insight builds on top of this experience and is the first step in getting customers started on a digitalization journey and getting ROI from their data.

START YOUR MARITIME DIGITALIZATION JOURNEY

## KONGSBERG VESSEL INSIGHT

Vessel Insight enables customers to unlock the value of their data in a simple way - giving them a competitive edge in our fast-paced digital world.

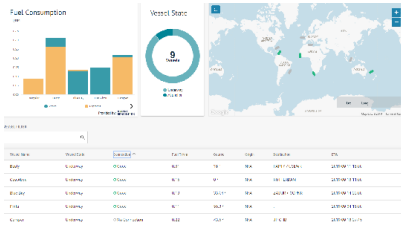
The solution provides vessel-to-cloud data infrastructure ensuring that customers can capture and aggregate quality data from their fleet in a cost effective and secure way.

With Vessel Insight, onshore and on-site staff involved in fleet management and operations get instant easy access to fleet overview, vessel specific dashboards and data analysis tools.

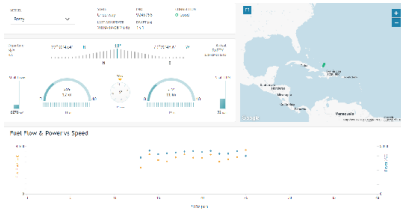
In addition, through Kognifai Marketplace, customers have access to a large range of applications and services that can turn their data into business value - ranging all the way from basic administrative tools to advanced vessel performance.

### Benefits

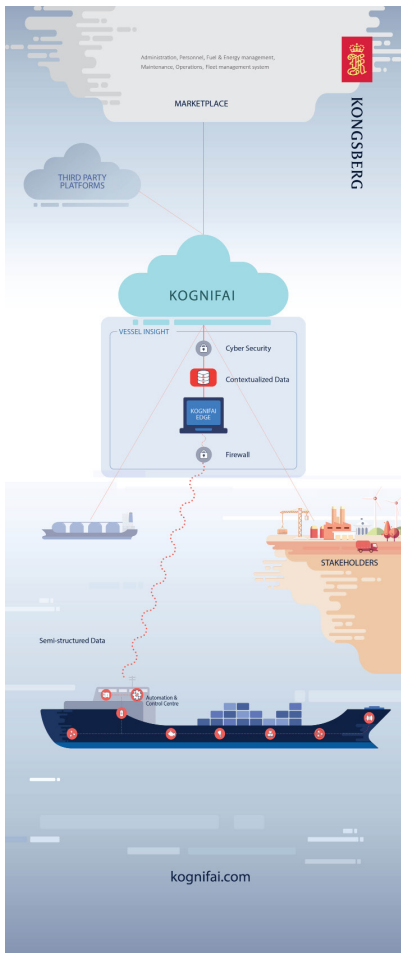
- Low cost data capture. Vessel Insight is a subscription-based service consisting of both hardware and software.
- Instant access to fleet & vessel data.
- Access to Kognifai Maritime Ecosystem, access to a broad range of applications ranging from vessel performance to fuel optimization
- Data quality, insight in vessel connectivity and data integrity
- Cybersecurity built-in from the start to ensure confidentiality and authorized access to data
- Open ecosystem makes it easy to integrate with supply partners and other data services
- Full control and transparency about the data gathered. It is yours to share



Fleet View



Vessel View



Kognifai Maritime ecosystem

### Features

- Intuitive overview of fleet status
- Standard dashboard for vessel specific assets and metrics
- Data analysis tools, data export functions and API for data integration with 3<sup>rd</sup> party analysis tools (such as PowerBI)
- Support for a broad range of vessel control systems & protocols\*
  - o K-Chief 500, 600
  - o MQTT
  - o NMEA TCP/Serial
  - o Modbus TCP
- Encrypted communication between vessel and cloud
- Uses existing internet connection on vessel. When data is collected, but no internet is available, the data is locally cached until the required bandwidth is available.
- Efficient data routing through KONGSBERG Global Secure Network

### APPLICATIONS & TOOLS

#### Fleet View

Fleet View is the starting point and provides an easy and intuitive overview of a fleet for users onshore and on-site. View position and status of all vessels in fleet across the globe.

Fleet View provides an overview of both connected vessels as well as non-connected vessels using the Vessel Insight AIS data service

#### Vessel and Asset View

Standard vessel dashboards will help staff identify events and situations which require attention by providing information about current vessel performance and compare this with the most recent period. Key metrics may include\*\*:

- Speed profile
- Fuel consumption Benchmark
- Power, Fuel vs Speed
- Engine state & load
- Generator state & load

#### Hardware

Vessel Insight consists of hardware, an edge box, installed on the vessel and software delivered as a service. The edge box gathers data from the onboard control systems and applies state of the art encryption before initiating secure data transfer to the cloud.

The hardware is maritime type approved and is pre-configured to match vessel setup and control systems and can be installed by the vessel crew.

Vessel Insight secures the confidentiality, integrity and safe access to your data by leveraging the capabilities of the Kognifai Ecosystem combined with KONGSBERG's experience in delivering mission critical solutions for over 200 years.

\* onboard control systems might require a software update to support the latest protocols. Other protocols are supported through integrations and converters.

\*\* metrics depend on signals available on a vessel.

KONGSBERG

kognifai@kdi.kongsberg.com

