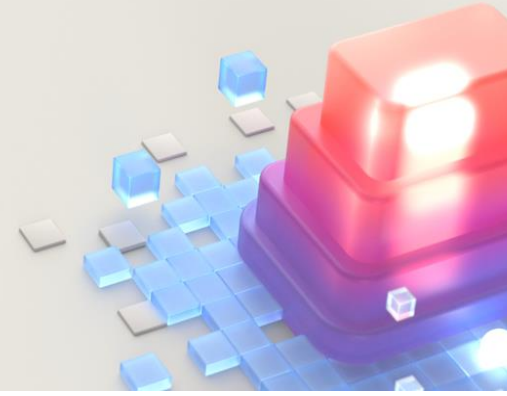


Access your ESI training content



This document is available in the following languages. The English version always has the most up-to-date information.

[Arabic](#)

[Chinese, Traditional](#)

[German](#)

[Korean](#)

[Brazilian Portuguese](#)

[English](#)

[Italian](#)

[Russian](#)

[Chinese, Simplified](#)

[French](#)

[Japanese](#)

[Spanish](#)

Enterprise Skills Initiative (ESI) courses are active, instructor-led learning experiences that include lectures, hands-on labs, group activities, and more.

When you attend one of our courses, you get dedicated, personal attention and support from a Microsoft Certified Trainer (MCT) who is a technical subject matter expert in the course topic.

Our courses all have hand-on labs so you can practice what you are learning. Your trainer will provide lab information on the first day of the course.

Course content is a key component of your learning experience. Created by Microsoft, it is designed to teach the skills and capabilities you need for the job and to help prepare you for certification.

Accessing the training content

To make the most of your ESI course, be sure you know how to access the training content.

The content for most ESI courses is available online on Microsoft Learn. Feel free to explore it to get familiar with the different topics addressed in the course. As the training progresses, your trainer will advise you on which modules to review.

To access your content, select the linked course title in the following list and then sign in on Microsoft Learn.

- [AI-050: Develop Generative AI Solutions with Azure OpenAI Service](#)
- [AI-102: Designing and Implementing a Microsoft Azure AI Solution](#)
- [AI-900: Microsoft Azure AI Fundamentals](#)
- [AZ-104: Microsoft Azure Administrator](#)
- [AZ-120: Planning and Administering Microsoft Azure for SAP Workloads](#)
- [AZ-140: Configuring and Operating Microsoft Azure Virtual Desktop](#)
- [AZ-204: Developing Solutions for Microsoft Azure](#)
- [AZ-220: Microsoft Azure IoT Developer](#)
- [AZ-305: Designing Microsoft Azure Infrastructure Solutions](#)
- [AZ-400: Designing and Implementing Microsoft DevOps Solutions](#)
- [AZ-500: Microsoft Azure Security Technologies](#)
- [AZ-700: Designing and Implementing Microsoft Azure Networking Solutions](#)
- [AZ-800: Administering Windows Server Hybrid Core Infrastructure](#)
- [AZ-801: Configuring Windows Server Hybrid Advanced Services](#)
- [AZ-900: Microsoft Azure Fundamentals](#)
- [DP-090: Implementing a Machine Learning Solution with Microsoft Azure Databricks](#)
- [DP-100: Designing and Implementing a Data Science Solution on Azure](#)
- [DP-203: Data Engineering on Microsoft Azure](#)
- [DP-300: Administering Relational Databases on Microsoft Azure](#)
- [DP-420: Designing and Implementing Cloud-Native Applications Using Microsoft Azure Cosmos DB](#)
- [DP-500: Designing and Implementing Enterprise-Scale Analytics Solutions Using Microsoft Azure and Microsoft Power BI](#)
- [DP-900: Microsoft Azure Data Fundamentals](#)
- [MS-700: Managing Microsoft Teams](#)
- [MS-720: Microsoft Teams Voice Engineer](#)
- [PL-100: Microsoft Power Platform App Maker](#)
- [PL-200: Microsoft Power Platform Functional Consultant](#)
- [PL-300: Microsoft Power BI Data Analyst](#)
- [PL-400: Microsoft Power Platform Developer](#)
- [PL-900: Microsoft Power Platform Fundamentals](#)
- [SC-100: Microsoft Cybersecurity Architect](#)
- [SC-200: Microsoft Security Operations Analyst](#)
- [SC-300: Microsoft Identity and Access Administrator](#)
- [SC-400: Microsoft Information Protection Administrator](#)
- [SC-900: Microsoft Security, Compliance, and Identity Fundamentals](#)

For more details about all ESI courses, explore the [ESI Azure Training Journey](#) and the [ESI Security Training Journey](#). If you have any issues accessing your course content, go to [ESI Support](#). Be sure to have your event ID handy. You can find it in the calendar invitation.