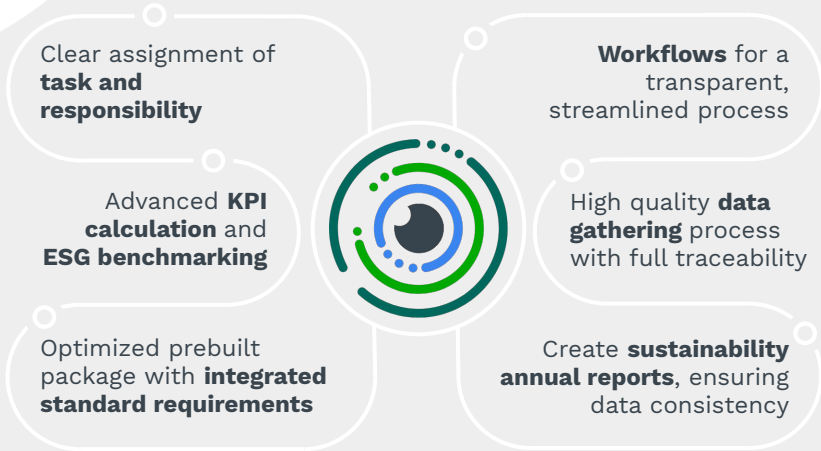


## A Sustainability Intelligence Platform

ESGeo is an **integrated software application**, based on **Microsoft Azure**, able to cover the end-to-end process of corporate sustainability, from data collection, included workflows, to report production and KPIs analytics.



**MEASURE**



**REPORT**



**COMPARE**



**IMPROVE**

- > **Optimize data collection and easily generate any sustainability report**, including annual balance report.
- > Increase managers' involvement in achieving Sustainability goals, **reducing the risk of ESG controversies**.
- > **Turn non-financial corporate objectives into an opportunity** involving all stakeholders - such as employees, investors, rating agencies and local communities.
- > **Identify and measure material ESG issues**, comparing your ESG positioning with peers (by rating agencies, pension funds, asset managers, etc.).

