

Archee

Robotic Management Center



www.arc-consulting.pl

ABOUT ARC CONSULTING

Connecting two worlds: business and new technologies

2007

date of ARC establishing

+95

consultants and programmers

Cracow (Poland)

headquarters

with projects in Poland (Kraków, Warszawa, Wrocław, Poznań, Łódź),
Czech Republic, Netherlands, Romania, Latvia etc.

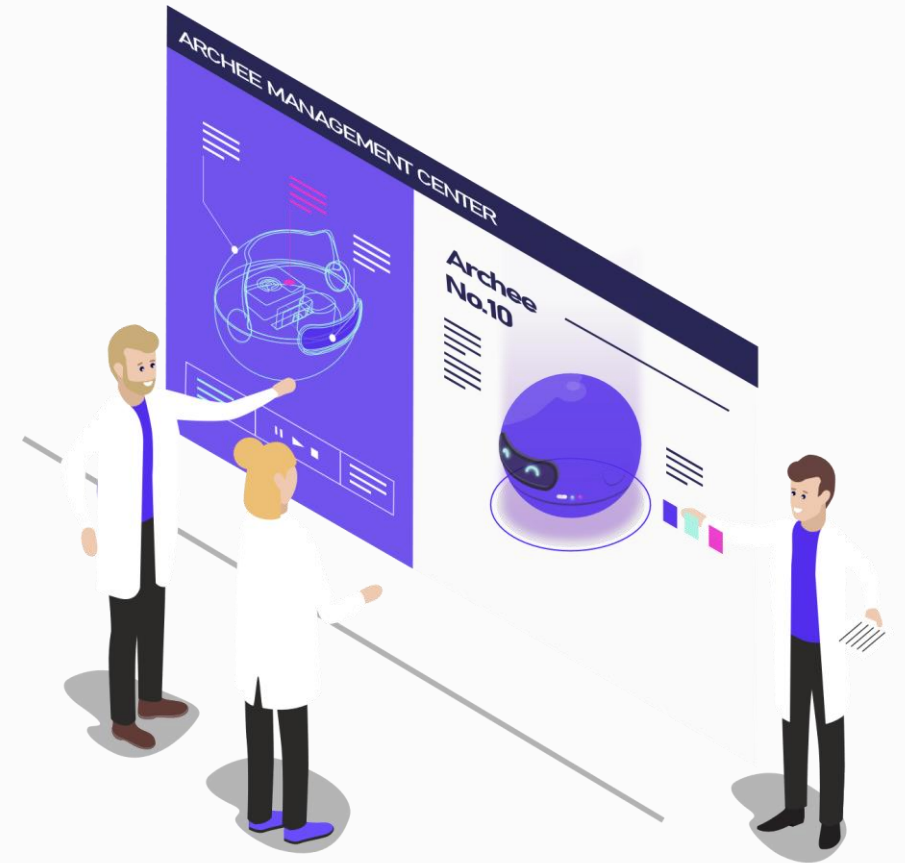
Microsoft Partner
Gold Small and Midmarket Cloud Solutions
Silver Collaboration and Content

Archee Robotic Management Center

(Archee RMC) is a web-based platform, hosted on Microsoft Azure environment, dedicated for monitoring and controlling robots (RPA) solutions.

Archee RMC was built to:

- Control robots (bots) within organization;
- Monitor robots' activities and their efficiency;
- Store all RPA related data within organization (including list of all automations, their specification and documentation, all related events such as robots' logs).



ABOUT ARCHEE ROBOTIC MANAGEMENT CENTER

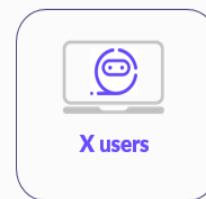
- Web-based solution for RPA management and controlling purposes (hosted on MS Azure);
- One centralized automations' repository with version control;
- All events recorded for tracking – robots report full information about its usage, issues, logs etc.;
- Calculation of ROI, time saved (FTE), number of runs etc.;
- Accessible by Robot Owners, Team Leaders, Managers, Director;
- Repository of RPA related documentation such as Process Description, Exit Procedures etc.;
- Scheduler functionality;
- Build-in notifications.



Following robots' types may be connected to Archee RMC:

- **Attended** – working as employee's 'assistant'. These robots are designed to be launched manually on employees' workstations.
- **Unattended** – working as 'virtual employee'. These robots are designed to be scheduled and launched on dedicated servers (Virtual Machines).

Workstation Robots (attended)



Scheduled Robots (unattended)



C4 PL Smart Platform RMC

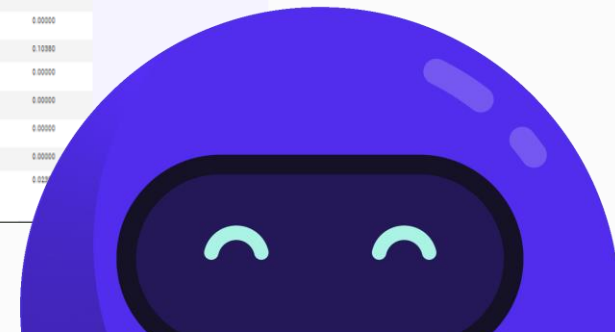
Robot Name	Robot Status	Working environment	Cycle	Calculation Type	FTE spent before automation	FTE for manual actions after automation
1 VAT Reporting Robot	Compliance	Compliance	Local workstation	Daily	Transaction	0.00000
2 Disputes Robot	ITC	Credit management	Local workstation	Daily	Transaction	0.00000
3 Resuscitation Robot	RTR	OL & Reporting	Local workstation	Monthly	Transaction	0.00000
4 Interact Emulator	Compliance	Compliance	Local workstation	Monthly	Transaction	0.00000
5 Daily IC Invoice Integration Printout	Compliance	Compliance	Local workstation	Other	Transaction	0.00000
6 ADO/ASAS Drawing Robot	RTR	Intercompany & Inventory	Local workstation	Daily	Transaction	0.00000
7 Credit Monitoring Emulator	ITC	Credit management	Server / VM	Daily	Transaction	0.00000
8			Server / VM	Daily	Cycle	0.00000
9			Local workstation	Daily	Transaction	0.04770

Controlling

Transparency

Efficiency calculation

Monitoring

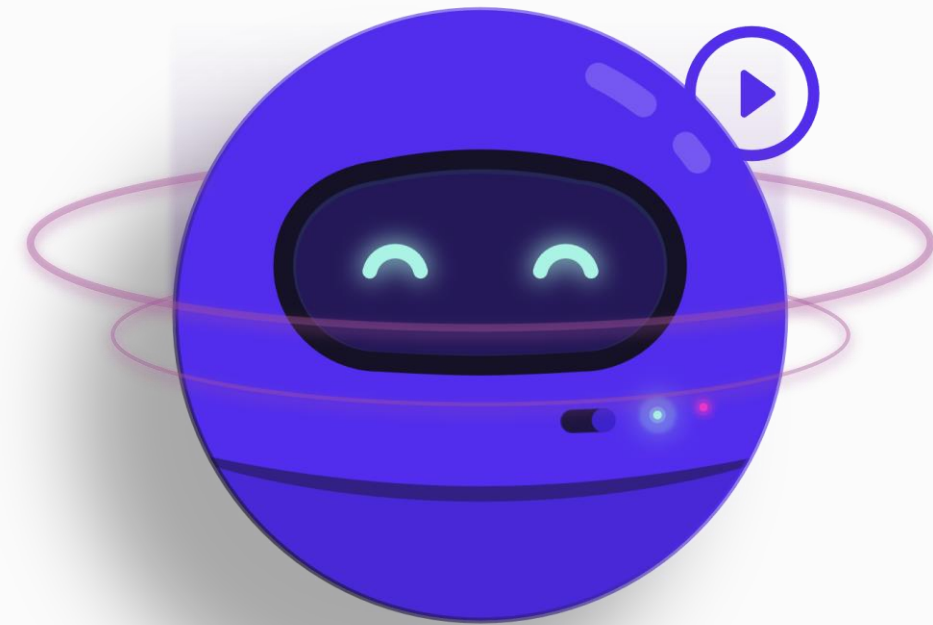


Monitoring

Archee Management Center is available through a web browser wherever you are. This is where you can check who has launched each robot, when you will receive the report you are waiting for, you can also verify the level of automation in your company or the profitability of the robots working for you.

All in one place

Each Archee's function is described in great detail. This is where you will find data of all robots reporting and connected to the Management Center. The database stores general information such as the name of the robot, its description and documentation, name of the owner, as well as a backup and full status history and version changes.



Reporting

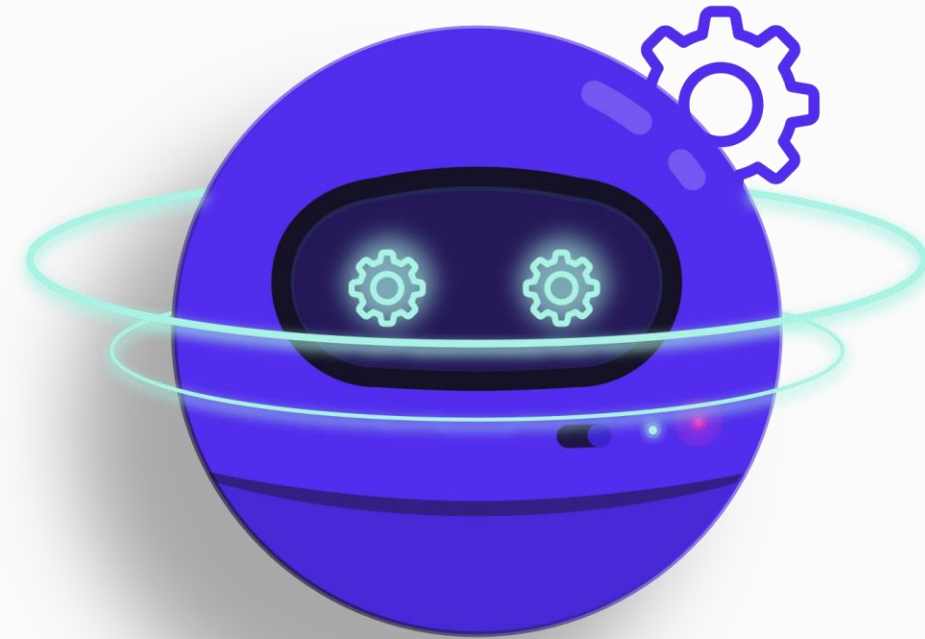
You can generate report summarising Archee's work at any time. All you have to do is use one of the built-in report templates.

You can focus only on the robots assigned to you, all robots working in your company or in a specific department. In each report you will find information about the owner, number of launches, savings, status of recent activity and many other parameters that will be important to you.



Archee RMC was created based on ASP.NET MVC 5 using C# and JavaScript. It is hosted on Microsoft Azure environment, where following services are used:

- **Azure SQL Database** – used for storing all robot's data.
- **Storage** – used for storing all robot's executing files.
- **App Service** – web application which uses Azure SQL Database and Storage services to presents data to users. It also allows users to manage this data.
- **Azure Active Directory** – authenticates users who should have access to Archee RMC.
- **Application Insights** – helps monitoring overall condition of Archee RMC solution.



The following list contains all prerequisites to deploy **Archee RMC**:

- Microsoft Azure subscription;
- Account with proper rights to create following MS Azure services:
 - a. SQL Server and database
 - b. Storage
 - c. App Service Plan and App Service
 - d. Application Insights
- Account with proper rights to register App Service in Azure Active Directory with following delegated permissions to Graph API including:
 - a. Directory - Read directory data
 - b. User - Sign in and read user profile
- Dedicated email account for incoming and outgoing e-mails (e.g. Microsoft Exchange).





Interested in learning more?

Do not hesitate to contact us.

ARC CONSULTING GROUP SP. Z O.O. SP. K.

phone +48 12 29 34 353

www.arc-consulting.pl

info@arc-consulting.pl

MAKE YOUR BUSINESS SMART