



July 1, 2020

# Hot Spot Assessment and Performance Diagnostics Offering

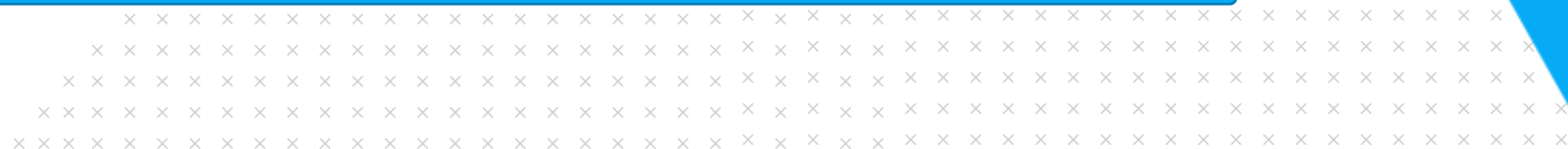
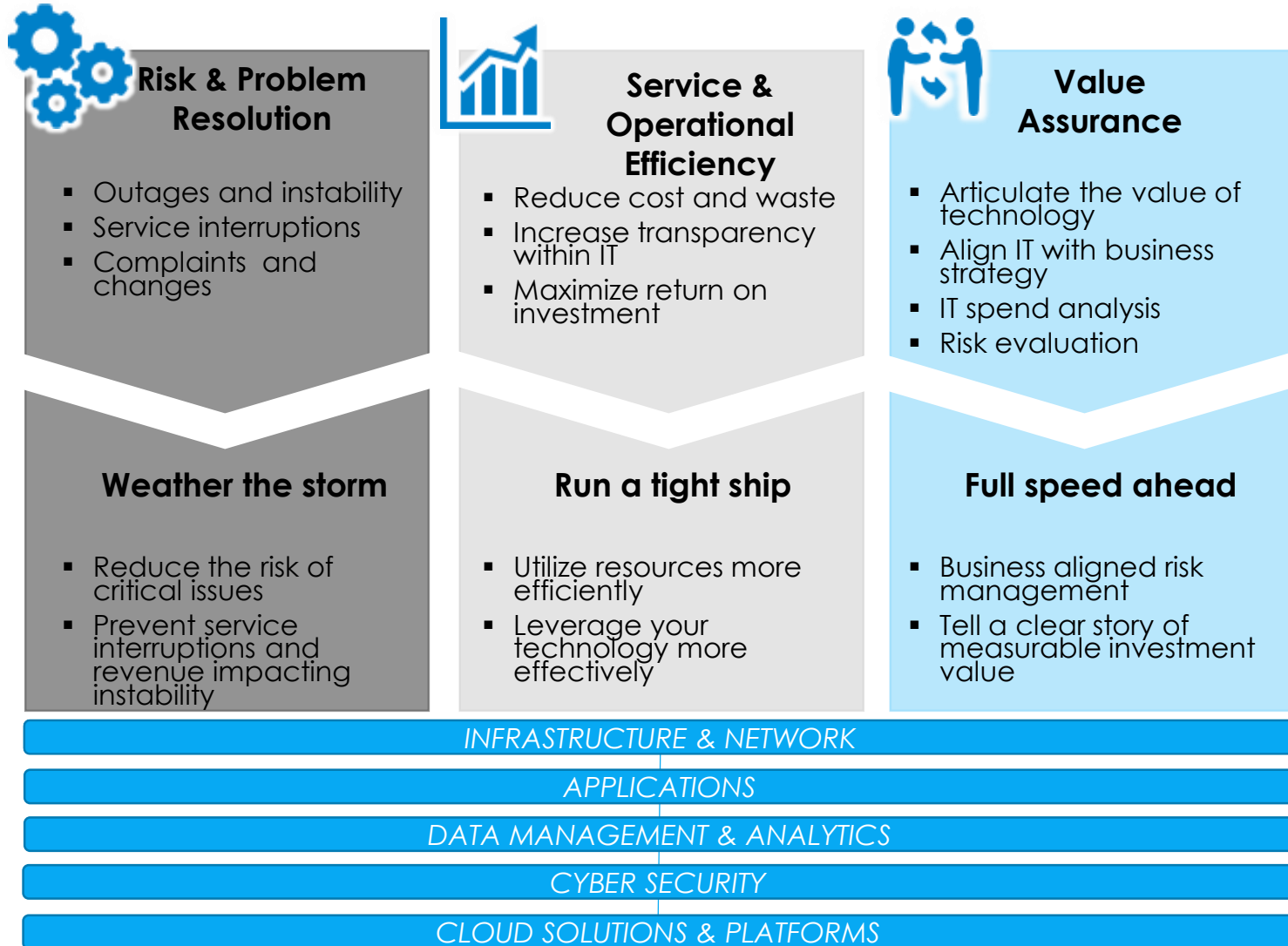
Jim Burnham

[jburnham@primetsr.com](mailto:jburnham@primetsr.com)

847.226.0714



# What We Do and How We Help



# Assessment Offerings

	1 Hot Spot Assessment	2 Performance Diagnostics
<b>Objectives</b>	<ul style="list-style-type: none"><li>✓ Identify areas of system architecture that may lead to performance, stability and scaling challenges</li><li>✓ Evaluate current delivery capabilities to manage system performance</li><li>✓ Recommend improvements</li></ul>	<ul style="list-style-type: none"><li>✓ Monitor performance issues in a live system and analyze the collected metrics</li><li>✓ Diagnose root causes of performance degradation across the infrastructure and application stack</li><li>✓ Recommend improvements and assist with implementation</li></ul>
<b>Skills Applied</b>	<ul style="list-style-type: none"><li>✓ Technology Architecture</li><li>✓ Delivery Architecture</li></ul>	<ul style="list-style-type: none"><li>✓ Performance Diagnostics</li><li>✓ Delivery Architecture</li></ul>
<b>Tool Requirements</b>	Architecture Assessment Frameworks	Performance Diagnostics Frameworks
<b>Environment Requirements</b>	N/A	Production Environment or Suitable Analog
<b>Duration</b>	3 - 4 weeks	4 – 6 weeks
<b>Costs</b>	\$55,000	\$70,000

# 1 Hot Spot Assessment Overview

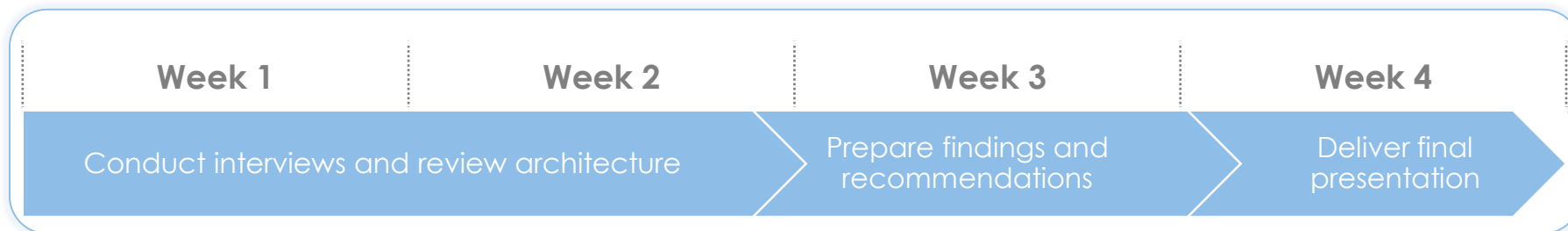
## Project Description

- The Hot Spot Assessment is a structured exercise focusing on key aspects of a solution architecture and its ability to meet the product roadmap requirements
- The scope and focus of the assessment is defined through initial interviews and includes application architecture, infrastructure and DevOps
- Follow-up interviews are conducted to probe deeper into the particulars of the architectures being evaluated
- Findings and recommendations are compiled and delivered to the technology stakeholders

## Key Team Resources

- Enterprise Architect
- DevOps Architect

## Project Timeline (3 - 4 weeks)



*The project duration may vary based on assessment complexity. The timeline shown above is typical for a medium-complexity assessment*

## ② Performance Diagnostics Overview

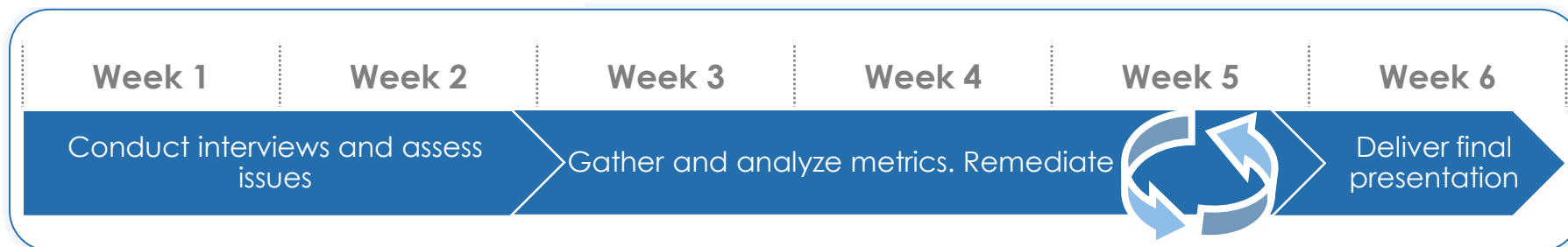
### Project Description

- The objective of a Performance Diagnostic is to diagnose a set of performance and stability issues and create a remediation plan
- The scope and goals are defined in the initial interviews
- Diagnostic tools are deployed to collect the performance metrics
- Metrics are analyzed to determine the root cause and remediation steps are documented and prioritized based on complexity and impact
- If the issues are impacting the production system, remediation steps are executed immediately, following by the verification and further diagnostics (optional)

### Key Team Resources

- Enterprise Architect
- Performance Architect

### Project Timeline (4 - 6 weeks)



*The project duration may vary based on assessment complexity.  
The timeline shown above is typical for a medium-complexity assessment*