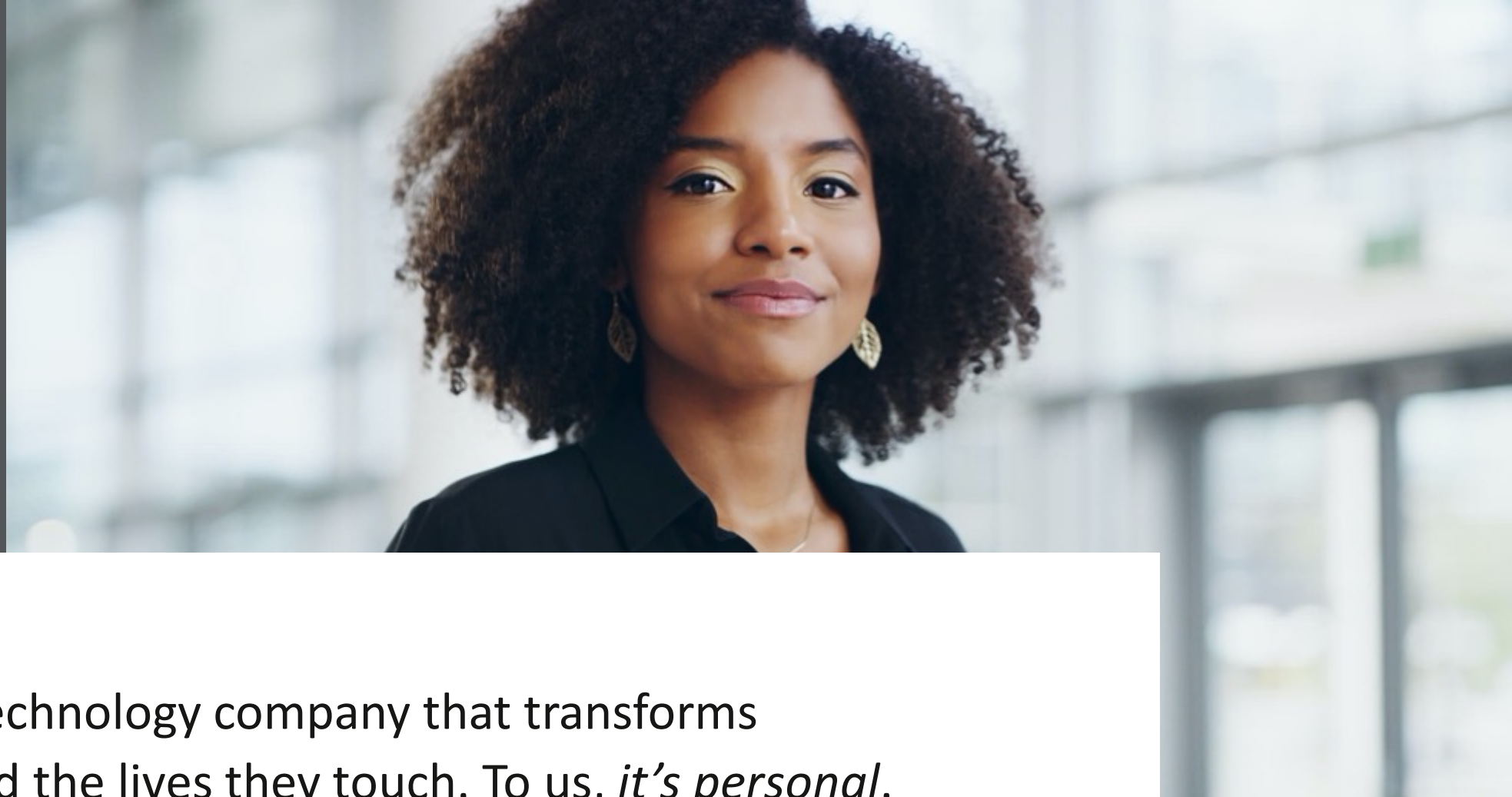




ENAVATE DYNAMICS GP TO DYNAMICS 365 BUSINESS CENTRAL SUBSCRIPTION

# **Your Fast-Track Path to a Worry-Free Cloud ERP Migration**

---



Enavate is a technology company that transforms businesses and the lives they touch. To us, *it's personal.*

---

# GAIN NEXT-GEN BUSINESS INSIGHT WITH DYNAMICS 365 BUSINESS CENTRAL



Financial  
management



Project  
management



Operations  
management

## MICROSOFT DYNAMICS 365 Business Central



Sales & service  
management



Reporting  
& analytics

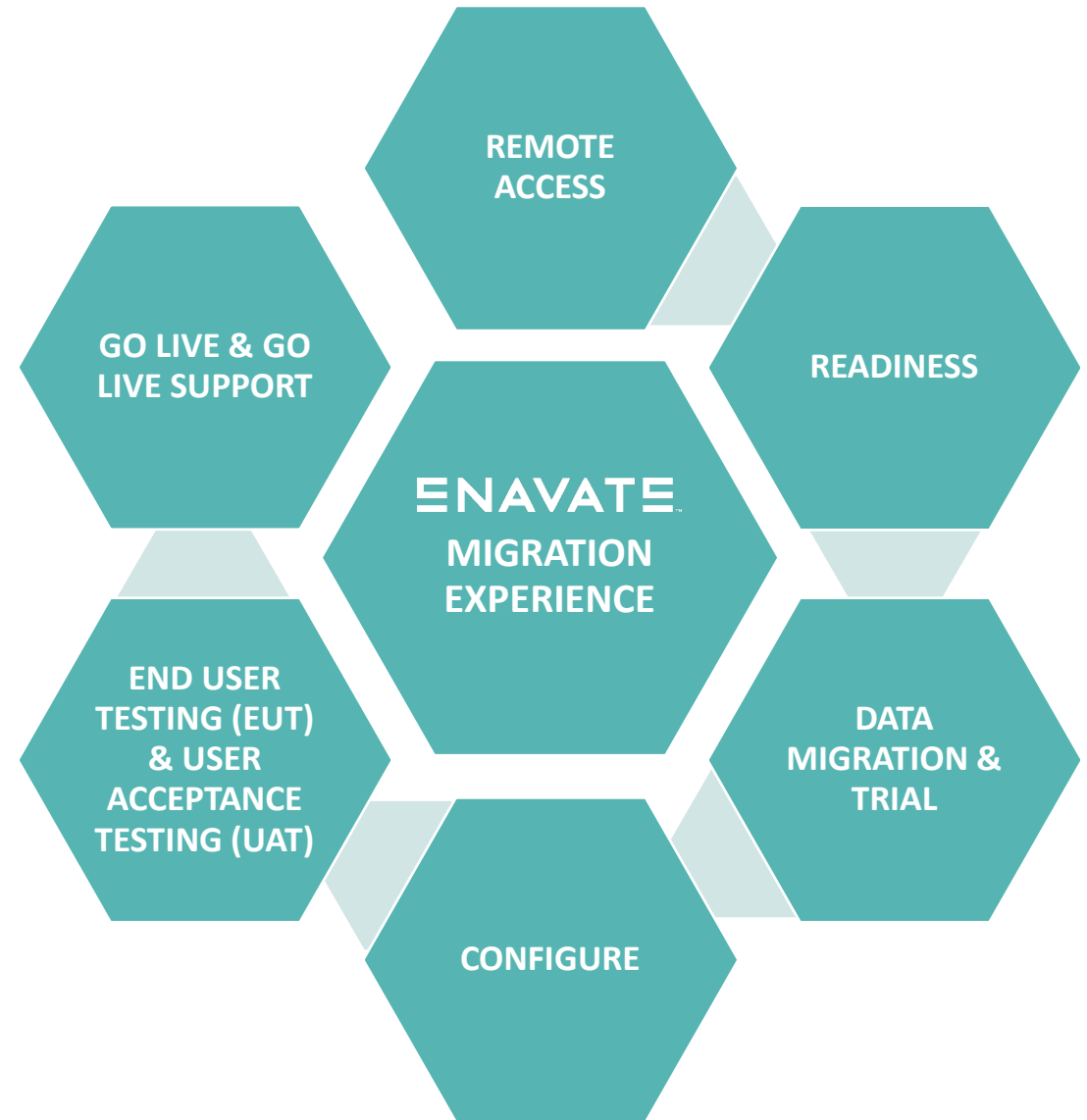


Supply chain  
management

# Discover Our 6 Step Pre-Defined Dynamics GP Migration Plan

---

# 6 STEP PRE-DEFINED MIGRATION PLAN



## THE DETAILS

# YOUR SINGLE MONTHLY SUBSCRIPTION PRE-DEFINED MIGRATION PLAN

### 1. REMOTE ACCESS

Enavate will perform all services remotely. The consultant will require remote access to your source environment and access your new environment remotely as well.

### 2. READINESS

Enavate will provide you with a portal pre-configured to display learning assets such as videos and documentation in addition to the training provided as part of the service agreement.

### 3. DATA MIGRATION & TRIAL

If you elect to have Enavate migrate your data from the source environment to the new one, your team will be invited to review the data in Business Central. If no transactional data migration is performed, we will configure the new environment and invite your team to review the configuration.

### 4. CONFIGURE

Enavate will refine the configuration of the environment based on feedback from your team during the trial.

### 5. EUT & UAT

After refinement of the new environment, it will be made available for testing and user acceptance. Enavate will provide your team with guidance on what scenarios should be reviewed.

### 6. GO LIVE & GO LIVE SUPPORT

Enavate will work with your team on a go live strategy and support them during the process. In addition, the subscription will cover your needs for support after go live.



# AN INNOVATIVE APPROACH TO DYNAMICS GP MIGRATIONS



## YOUR SUBSCRIPTION PROVIDES A UNIQUE SET OF BENEFITS TO YOUR ORGANIZATION, INCLUDING:

- No upfront migration costs.
- One single monthly subscription fee that includes your migration, your licensing, and your support in a fixed term.
- Preconfigured Packages available for your industry to allow for quick configuration of Dynamics 365 Business Central for your industry's needs.
- Core Financial Management (GL/AP/AR)
- Azure Intelligent Gateway configuration for integration into Azure data services.
- 100% remote implementation available, reducing expense costs and exposure of your team.
- Shared Collaboration space to interact with your migration and support team.



# YOU NEED A PARTNER NOT A VAR

- Value Add Resellers (VARs) sell you licensing
- True partners offer that AND so much more
- Strategic partnerships foster a true trusted advisor relationship and build long-term relationship with clients
- Meaningful discussions, strategic planning, whiteboard sessions to build a vision for the future
- Years of successful ERP implementation and Cloud migration experience, a partner that can handle the transition
  - Customer service and support
  - Cloud & Microsoft Gold certifications
  - Strategic partnerships with Microsoft, Citrix, ISVs and more



# EXPERIENCE THE ENAVATE DIFFERENCE

- We transform business and the lives they touch. To us, it's personal.
- Industry and Cloud experts with a fresh perspective on the technology implementation process and a deep respect for the impact of these solutions on people in your business.
- Microsoft Gold Partner specializing in professional and managed services to Microsoft Dynamics clients.
- Offers a full range of services including ERP implementation, cloud migrations, managed Cloud, managed ERP in the Cloud, upgrades, BI & analytics, maintenance, and support
- Services and support provider for DXC Technology's Microsoft Dynamics GP, NAV, SL, Business Central, and Cloud Services clients.



FOUNDED  
IN 2014



GLASSDOOR  
REVIEWS



400+  
EMPOWERED  
TEAM MEMBERS



1800+ DYNAMICS  
CUSTOMERS  
BEING SERVICED

CHANGING THE WAY COMPANIES MIGRATE TO  
DYNAMICS 365

Our Enavate team of experts are ready to deliver a packaged offering of Dynamics GP **migration services** to Dynamics 365 Business Central (BC), Dynamics 365 BC **licensing**, and Dynamics 365 BC **support** for a **SINGLE monthly subscription**.

LEARN MORE ABOUT OUR FAST-TRACK PATH TO  
THE CLOUD:

- [INFO@ENAVATE.COM](mailto:INFO@ENAVATE.COM)
- 303-469-2346

