

The background of the slide features abstract, flowing, wavy lines in various shades of teal, light blue, and dark blue, creating a sense of motion and depth.

Alfabet FastLane

Accelerated innovation & reduced IT costs with
IT portfolio management

 **software** ^{AG}

Alfabet FastLane – IT portfolio management essentials

Software AG's Alfabet FastLane is a ready-to-use, SaaS-based, business-focused and architecture-based IT portfolio management (ITPM) solution. Alfabet FastLane makes IT portfolio management easy. Manage your complete enterprise architecture with one easy-to-use interface and have insights into all your portfolios. Start instantly with a pre-configured environment and analytics dashboards. It is perfect for the essential needs of ITPM starters.

Know IT all?

Has your IT landscape grown to levels of complexity that hinder transparency?

Are high IT cost and complexity undermining IT innovation and agile response to business demands?

Does your IT organization handle major business disruptions well?

What if you could?

Reduce your IT complexity and gain complete transparency into your IT landscape

Improve your IT operational performance by eliminating information silos

Ensure business continuity and align your IT planning to your business strategy

Plan your digital transformation from strategy to execution

Improve business and IT agility, drive innovation and reduce time-to-market

Optimize governance, reduce IT spend and lower risks

Envision complete insights into your IT portfolio!

Alfabet FastLane empowers you to ...



... highlight potential problem areas in your IT



... understand gaps in your architecture



... defend and support your IT decisions



... define and plan your cloud migration strategy



... specify and analyze compliance information



... make IT the business transformation enabler



Be a digital winner with Alfabet FastLane

Turn IT into a powerful engine for business innovation and enable digital transformation



PERFECT FIT, COMPETITIVE COST, LOW RISK

Covering the essential needs of new portfolio management practices



PRE-CONFIGURED SAAS PRODUCT

No set-up required, instant ITPM, easy to use



DELIVER VALUE QUICKLY AND EASILY

Pre-defined reports, roles, KPIs and out-of-the box meta-model



BUSINESS OUTCOME FOCUS

Centered on business questions and their data requirements

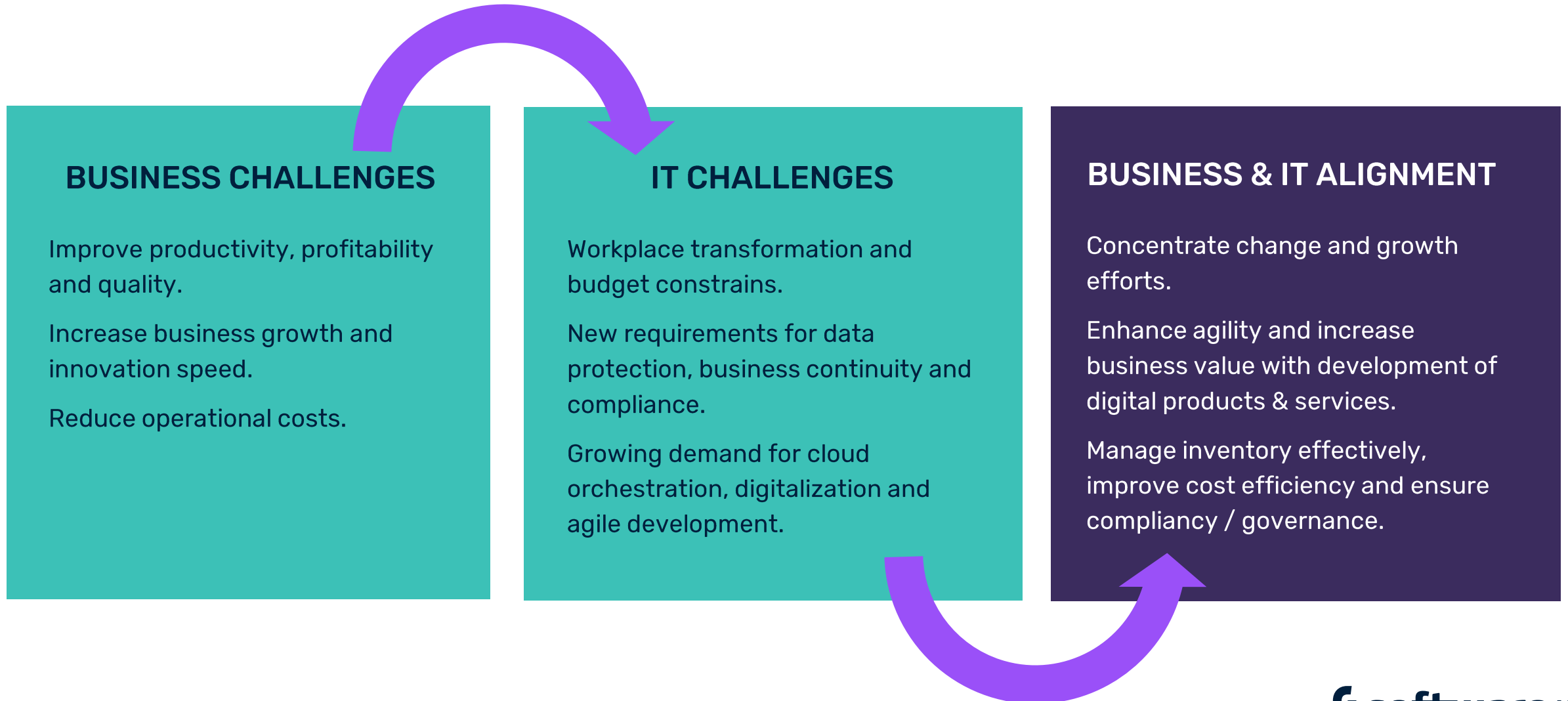


EXTENSIBILITY

Proven methodology, fully extensible into enterprise-grade solution

Start your IT portfolio management journey now

Business driven IT-Transformation demands IT-architecture alignment with business strategy



Perfect fit solution for the midmarket and ITPM starters

Smaller doesn't mean less complex or responsive to business demands

Addressing realities:

- Individuals & small ITPM teams
- Small to medium datasets
- Lower IT maturity, no ITPM solution in use, no central function
- ITPM maturity is not a prerequisite, should be a result

Use case focused & application centric ITPM

IT rationalization

Inventory, asset and cost management

Digitalization & transformation

IT portfolio roadmapping

Cloud orchestration & integration

Impacts and dependencies transparency

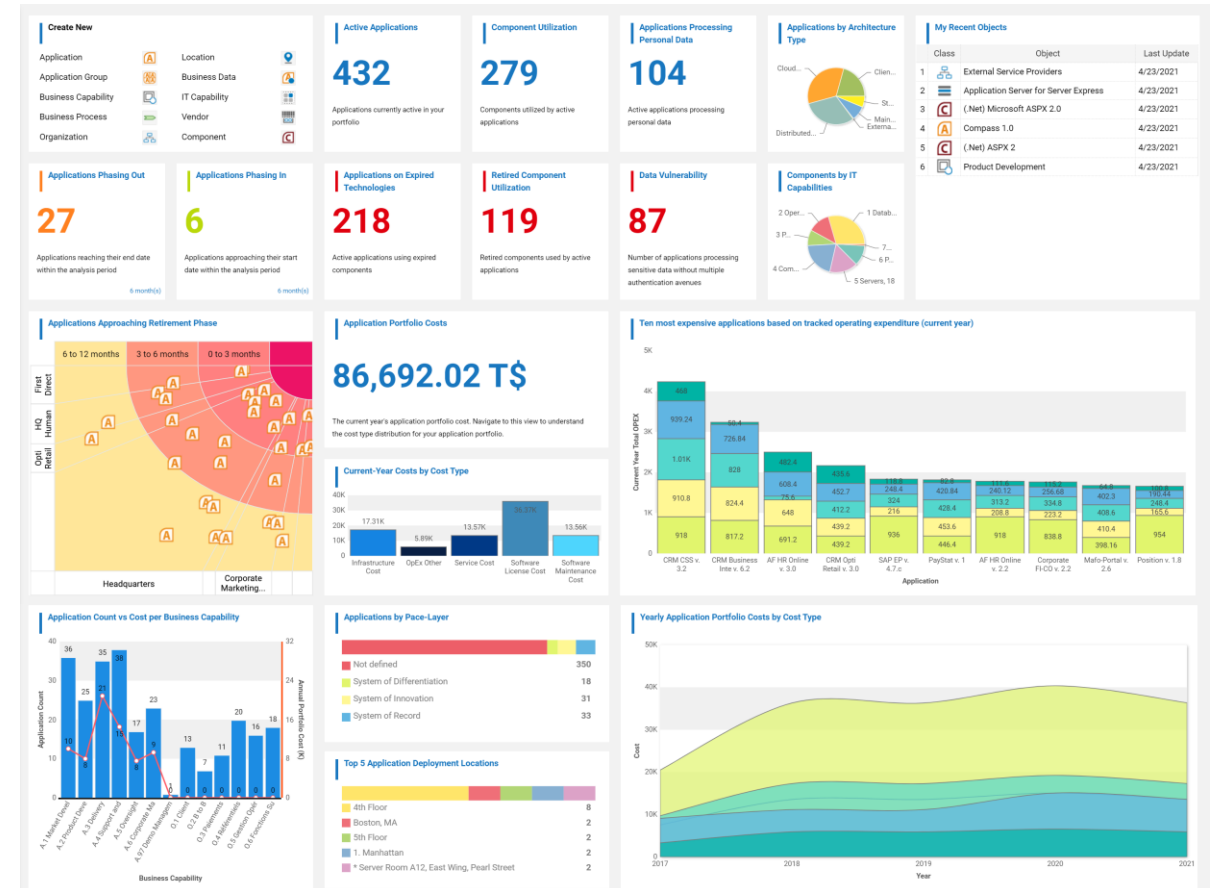
IT-driven business decision making



The fastest & easiest way to manage IT portfolios

Get the full view of your IT with ease

- SaaS Solution for IT Portfolio Management
- Zero configuration and implementation time
- No extra training needed
- Use case focused and self-service discovery approach, guided onboarding and in-product user guidance for an instant start
- Competitive and straightforward pricing assure transparency and no risk
- Customer oriented agile product development



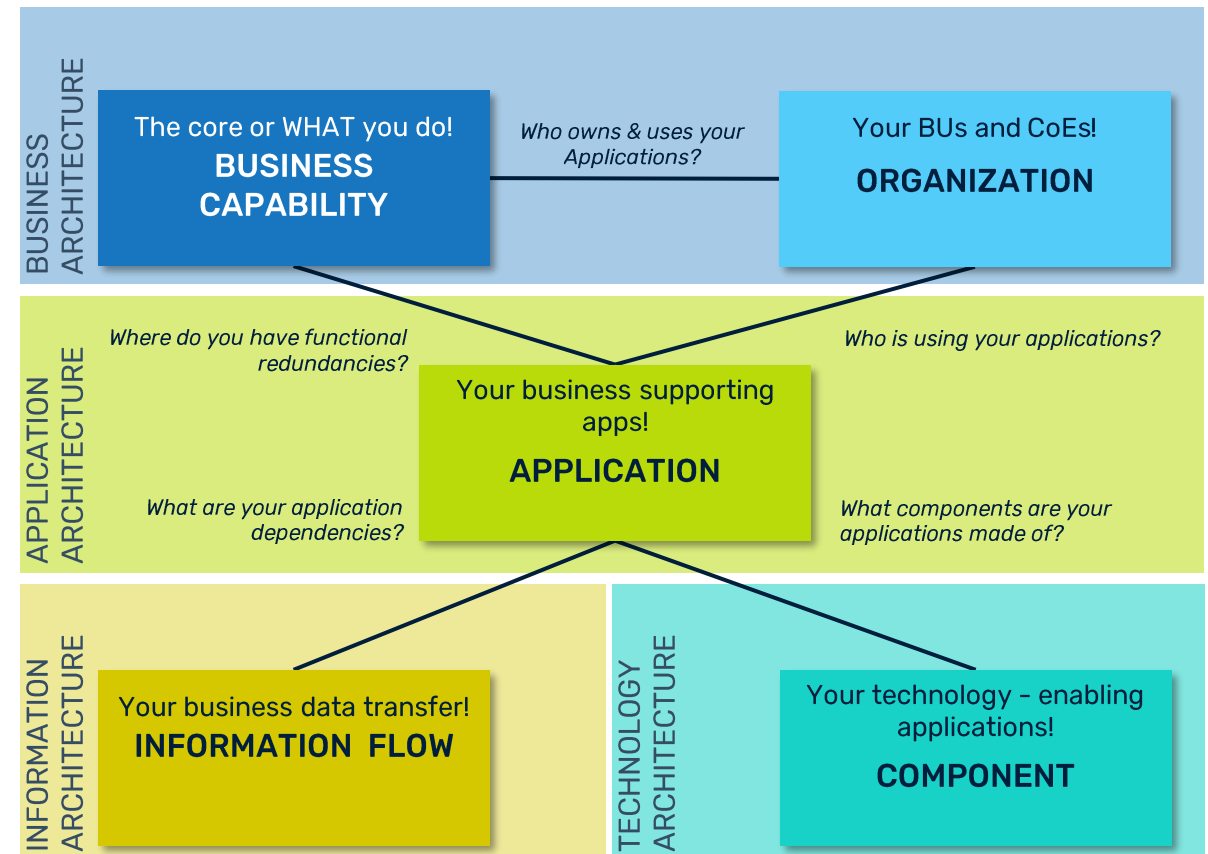
Complex IT portfolio management made easy

Pre-configured environment and analytics at a glance

Meaningful and actionable IT insights for improved business support

- Manage your complete Enterprise Architecture in one flexible repository
 - Application Architecture / Business Architecture / Technology Architecture / Information Architecture / Cloud Architecture
- Easy start with pre-defined reports, roles and OOTB profiles for portfolio management
 - Portfolio Admin / Portfolio Manager / Cloud Portfolio Manager / SAP® landscape analysis Manager / Data Entry / Viewer
- Always know where you stand - immediate insight into the level of data governance and completeness across your portfolios

What's behind – simplified conceptual meta-model



Centralized repository and data-driven approach

Building the foundation of your IT portfolio management with always up-to-date information

Guided data upload via pre-defined Excel templates

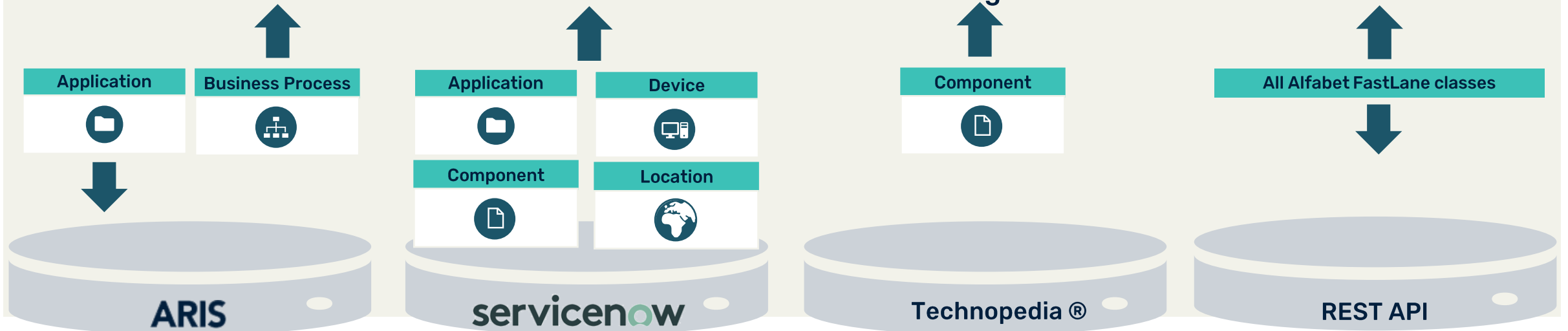


Quick setup and simplified data entry to capture and maintain portfolio data

Alfabet FastLane

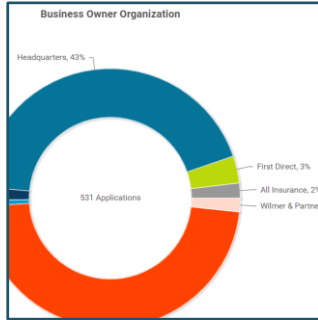
Focus on building repository not spending time on tool configuration

Automated data transfer via OOTB integrations



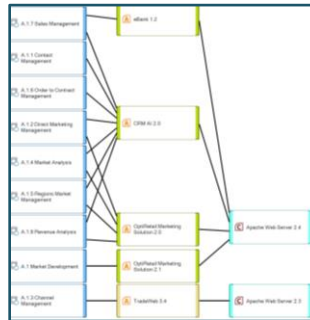
Relate your IT portfolio to business outcomes

Centered on pre-defined business questions reports for fast time-to-value



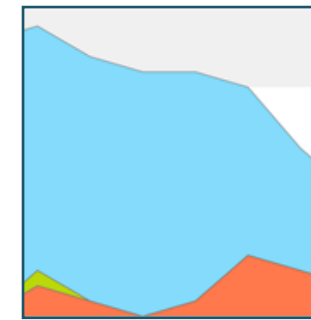
GOVERNANCE

Responsibility and accountability for IT assets. Focus change efforts and monitor strategy execution



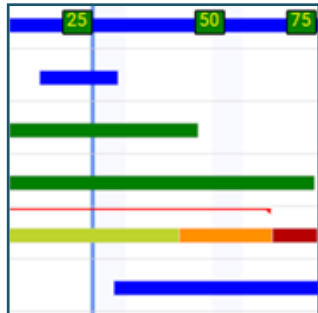
TRANSPARENCY

Up-to-date, reliable information on the as-is landscape, architectural dependencies and vendors.



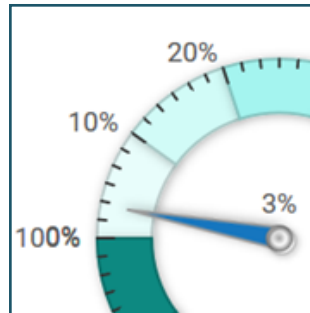
RATIONALIZATION

Eliminate complexity by removing functional redundancies and reducing technical debt



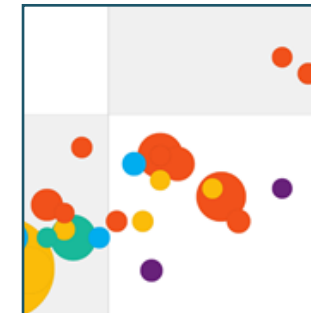
ROADMAPPING

Plan for transformation success. Coordinate IT change efforts to ensure change happens.



RISK

Lower risk to critical applications, technologies, and impact of IT security issues on critical business areas.



CLOUD MIGRATION

Accelerate cloud migration journey with cloud assessment, impact analysis and define migration strategy and planning.

Analyze your portfolio, gain instant insights to address the most critical aspects of IT portfolio.

Business-focused and architecture-based IT portfolio management ensures impact analysis and IT change decisions based on an understanding of the architecture.

Answers to business relevant questions

Instant insights & executive-ready graphical dashboards



GOVERNANCE

- *Who is responsible for our assets?*
- *What should we be focusing on?*
- *Who owns which applications?*



TRANSPARENCY

- *What is our application portfolio?*
- *Which process areas require most IT support?*
- *What are our architectural dependencies?*
- *Where do we have functional redundancies?*
- *What is our technical debt?*
- *Who are our vendors?*
- *What is our Business-IT alignment?*



RATIONALIZATION

- *What are our business capability outsourcing candidates?*
- *What are our cost drivers?*
- *What are our investment/retirement candidates?*
- *What is the status of our rationalization plan?*



ROADMAPPING

- *What is our landscape?*
- *What is our target architecture?*
- *What is our roadmap?*



RISK

- *Where do we use sensitive data?*
- *What is our security score?*
- *How will IT failure impact our business?*



CLOUD MIGRATION

- *What are our cloud focus areas?*
- *What is our cloud migration strategy?*
- *What is the technical obsolescence impact?*
- *What is our cloud footprint?*

With Alfabet FastLane, you'll focus on what you need to know NOW

Market-leading capabilities

for organizations of any size and maturity



Leverage the experience of solution leadership

Consistently ranked a leader in Forrester Wave and Gartner MQ



Start small and grow

Fully extensible into Alfabet's Enterprise-grade solution. Upgrade easily as your business has more advanced requirements.

+20

Extensive experience

Benefit from proven methodology and best practices and over 20 years of experience



Software AG - Trust in global market leader

Over **50** years of experience, presence in over **70** countries, **+80%** of FORTUNE 500 are our customers

Alfabet is a leader in Gartner Magic Quadrant for Enterprise Architecture Management 2020



These graphics were published by Gartner, Inc. as part of a larger research document and should be evaluated in the context of the entire document. The Gartner document is available upon request from Software AG. Gartner does not endorse any vendor, product or service depicted in its research publications, and does not advise technology users to select only those vendors with the highest ratings or other designation. Gartner research publications consist of the opinions of Gartner's research organization and should not be construed as statements of fact. Gartner disclaims all warranties, expressed or implied, with respect to this research, including any warranties of merchantability or fitness for a particular purpose.

Straightforward price model, full transparency

User based subscription model

				
	Car Pool	Van	Bus	Custom
Business user	5	10	20	individual
Analysis user	10	20	50	individual
Minimum subscription duration	1 year	1 year	1 year	1 year
OOTB integrations	Included	Included	Included	included
Price (annual subscription fee)	€ 30.000	€ 42.000	€ 76.000	Individual pricing per user (€ 12.500 for 1 st user, discounted pricing for more users)

For more information, contact us at
support@alfabetfastlane.com

