



2018

2019

CORE IMS 4.0 EDITION





WITHOUT INVENTORY SYSTEM IT'S DIFFICULT TO CHECK
AVAILABILITY AND SELL WAREHOUSE STOCK DIRECTLY;
YOU'RE CREATING UNNECESSARY CHALLENGES FOR YOUR
MANAGEMENT AND SALES PEOPLE.

REAL TIME CONNECTION BETWEEN YOUR WAREHOUSES TO
YOUR SALES CHANNELS ALLOWS FOR FASTER, ACCURATE
FULFILLMENT OF ORDERS. THIS WILL CREATE CUSTOMER
SATISFACTION AND WILL KEEP YOUR CUSTOMERS LOYAL.



PROBLEM STATEMENT

Whether you're in manufacturing or wholesale, your Inventory is one of your biggest problems and expense. Can you afford not to manage it effectively? Inventory management software helps you to understand cost of your inventory, goods sold and stock movement across multiple locations. You can strategically order/reorder stock to keep up with demand without overstocking.

Without Inventory system it's difficult to check availability and sell warehouse stock directly; you're creating unnecessary challenges for your management and sales people. Real Time connection between your warehouses to your sales channels allows for faster, accurate fulfillment of orders. This will create customer satisfaction and will keep your customers loyal.

In order to see the bigger picture and make right decisions, your management needs the right information in the right place at the right time. Centralize your management reporting and make it easy to mine your real time data. Whether you're forecasting or tracking sales, CoreIMS keeps all your data in one easy-to-access place.

The Core Inventory Management System (CoreIMS™) is a cost-effective robust inventory management system that provides flexibility in supporting warehouse operations. It is designed to address a comprehensive set of warehouse needs efficiently and effectively, including the management of multiple warehouses.

CoreIMS provides a Real Time visibility for your inventory. CoreIMS is easy to install, use and operate; delivering savings typically associated with much more expensive warehouse management software through improved inventory accuracy and increased labor productivity. CoreIMS delivers real-time inventory information in support of better management practices and improved customer service.

For Custom Warehouse project we recommend CoreIMS 4.0. This edition is Internet/ Intranet based with Specially designed, user friendly Client Application with Customized user access security levels and well suited for use in local or hosted environment. We also offer a mobile version of our application for smart phones and tablets.

All CorePartners products including off-the-shelf Inventory Management Solutions support barcode scanning and printing.



core
i.m.s

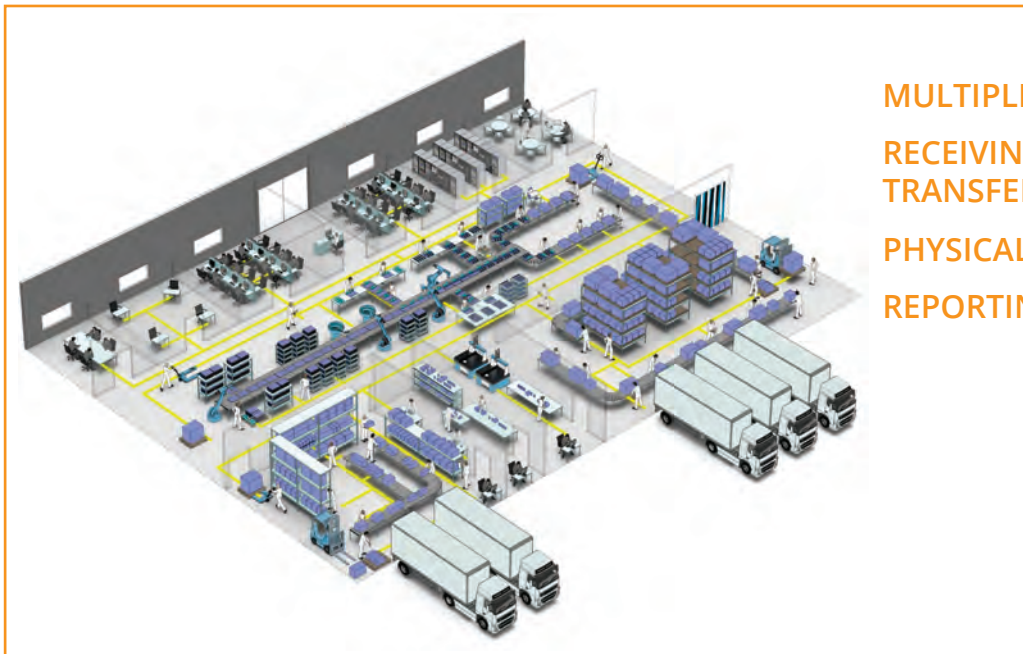
MAIN FEATURES OF COREIMS v.4.0

MULTIPLE WAREHOUSES AND LOCATIONS: Each stock item in CoreIMS is associated with a location in the warehouse. CoreIMS supports any number of warehouses and locations within each warehouse.

RECEIVING AND SHIPPING: Receiving and shipping operations are tracked in CoreIMS with receiving, shipping and transfer orders. During receiving CoreIMS allows user to specify attributes of the received stock as well as location (pallets and container storage is also supported). Receipt reports are generated as part of standard order processing operations and may be customized as needed. All inventory operations support serialized and non-serialized items, optional expiration and receiving dates, transaction history tracking and user-defined custom fields. Cross Docking Feature is available. Also CoreIMS generates and prints receiving and shipping documents.

STORING: Inventory in CoreIMS is associated with a location within a Site (physically or logically speaking). Pallet and/or container organization is supported within locations. Authorized users are allowed to change item location as well as receive (create) or ship (delete) inventory from locations. Also users may assign status to inventory items. The ability to create and modify item status is a standard feature of inventory systems, including our solution. Individual stocks in CoreIMS may only be assigned singular attributes of location and status, so at any particular time only one location and only one status may be assigned. Authorized users are allowed to change the location or status of inventory items. CoreIMS records all such changes in the transaction history that is readily searchable. Also authorized users may create and specify additional stock custom fields for entry and management within the system.

PHYSICAL INVENTORY: Physical inventory operations are best implemented with the assistance of hand held devices and CoreIMS supports a large number of such devices, both wireless and tethered.



MULTIPLE WAREHOUSES
RECEIVING, SHIPPING AND
TRANSFER ORDERS
PHYSICAL INVENTORY
REPORTING SYSTEM

REPORTING: CoreIMS reporting capabilities allow users to create reports from existing database fields. The CoreIMS reporting tool is based on Crystal Reports. Over 50 reports available. Each report contains a set of parameters that users are allowed to specify before running the report. Also CoreIMS allows users to specify a schedule for automatic report generation and to send reports via e-mail.

CoreIMS is delivered with a standard set of summary reports. Additional reports may be developed using Crystal Reports. For this project the required set of additional reports will be clarified and developed during the customization project phase. Reports may be exported to XLS, PDF, DOC, and HTML formats.

CUSTOM BRAND MANAGEMENT: Ensure and maintain total control over the look and feel your company and products provide.

INTEGRATION: Integration with QuickBooks, Sage 50 US/Canadian, Microsoft Excel, and flat file import/export is supported. Integration with other external systems may be implemented.

RF/BARCODE: Eliminate manual errors; using mobile barcode scanning capabilities will reduce human errors. Operations with wide range of RF devices are supported along with barcode generation and label printing, including NFES barcode definitions.

FRONT-END CAPABILITIES: quickly view current inventory levels, modify orders, dashboard reporting from any device via web browser.

FEATURES



CONCEPTS

- User-defined UOM
- Simple access control
- Personal user profile
- Complete transaction history
- Ownership for 3PL operations
- Browser based Front End



REPORTING

- Over 50 Reports available
- Item availability
- Receiving order status
- Shipping order status
- Back order status
- Date and User stamped
- 3PL Invoice



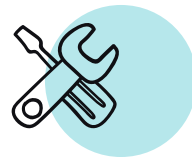
RECEIVING

- Against PO/Unexpected receipt
- Partial receipts and un-receive
- Receipt documents
- Pallet/container labeling
- Cross Docking
- Return Tracking



SHIPPING

- Against SO/Unexpected
- Partial shipment and Un-ship
- Forward pick locations
- Order Allocation
- Pending shipment
- BOL and packing list
- Back Orders



ITEMS

- Item Dashboard
- Item Class/Category/Type
- FPL and Preferred Location
- SKU and UPC support
- Assign Bill of Material (BOM)
- Exp. Date and Warranty
- Custom defined fields
- Item Images



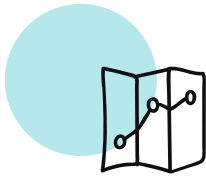
STORING

Cycle count per Site
Zones and Locations
Physical inventory
Adjustments
Movements
Standard and Custom
StockStatuses/Holds
Stock Custom Fields



INTEGRATION

Intuit QuickBooks US Edition
Sage 50 US Edition
Sage 50 Canadian edition
Microsoft Excel
Flat files import/export
EDI Support



GENERAL

Lot tracking
FIFO/LIFO/FEFO
Serial number tracking
Multi-SKU pallets
Pallets/Containers
Work Orders/Kitting



BAR CODING

Multiple Barcodes per Item
RF barcode scanners support
Barcode generation and label
printing



REPLENISHMENT

Replenishment Level per site
Warehouse Transfers/Move
Min/Max quantity per warehouse
E-mail Notifications



MULTIPLE WAREHOUSE

Intra Warehouse Transfers
including Allocation, Send and
Receive Transfer Support

PLATFORM OVERVIEW

THE MAIN COMPONENTS ARE:

CoreIMS 4.0 Desktop application (windows-based application that provides users with the ability to perform inventory operations through the internet/intranet. This includes running various reports and tracking inventory status and conditions). Set of services to support desktop and mobile applications (Inventory, Receiving, Shipping etc.)

CoreIMS Mobile RF operations are supported by the CoreIMS RF Server and CoreIMS RF Mobile client application. Cooperatively they provide the ability to work with CoreIMS through mobile devices and make use of the advantages associated with RF solutions.

CoreIMS reporting tools are based on Crystal Reports, so newly modified or created reports may be quickly added. All CoreIMS reports are available through the CoreIMS UI.

The CoreIMS BT Module allows for seamless work with many types of label printing equipment (supported by Seagull BarTender® label design and printing products).

Web-based responsive Front End application for warehouse users in fields or 3PL customers. Can be used on any devices with modern web browsers (desktops, laptops, tablets, phones). Features include browsing current inventory levels, creating shipping/receiving/transfer orders, dealing with returns, comprehensive dashboard etc.

The XML based integration tool provides a flexible way for future integration associated with data import/export to other agency systems.

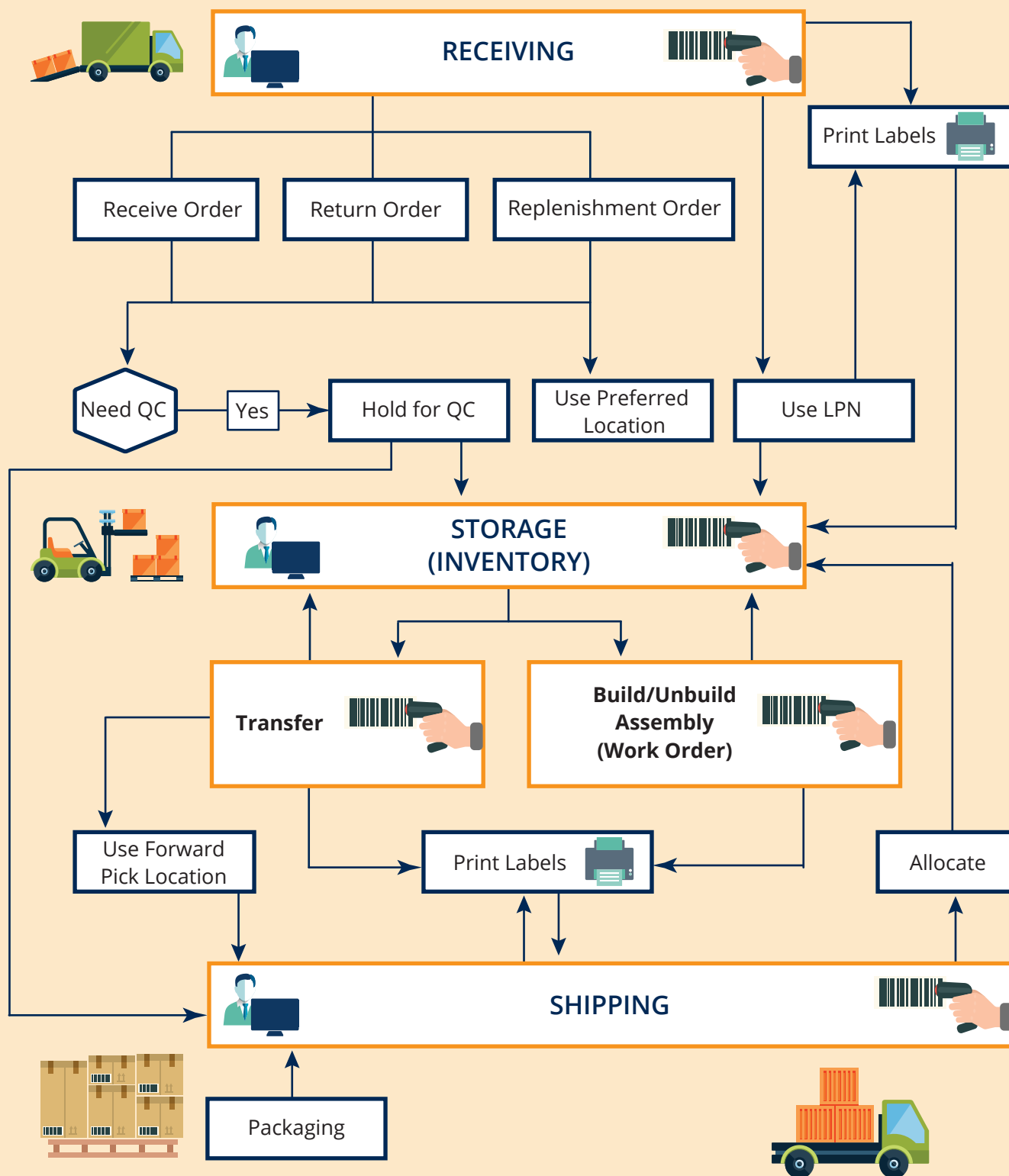
REST-based API that provides the ability for 3rd party systems to integrate with CoreIMS.

Billing module for invoicing 3PL customers.



COREIMS PLATFORM UTILIZES
DISTRIBUTED SERVICE-ORIENTED
ARCHITECTURE, WHICH GIVES
FLEXIBILITY IN CUSTOMIZATION AND
DEPLOYMENT.

Core IMS Process Flow Chart





203 Broadway Street, 2nd Floor
Frederick MD 21701

1-866-267-3967
info@corepartners.com

