



Harnessing WEBINT Capabilities
to Protect Public Spaces With a
New Location-Based Solution

Powering Location Intelligence

With enormous amounts of location-based data in the intricate web eco-system, law enforcement and national security agencies can benefit from geolocated intelligence in the palm of their hands. Cobwebs Technologies is a global leader in Web Intelligence. Our innovative solutions are tailored to the operational needs of law enforcement and national security agencies.

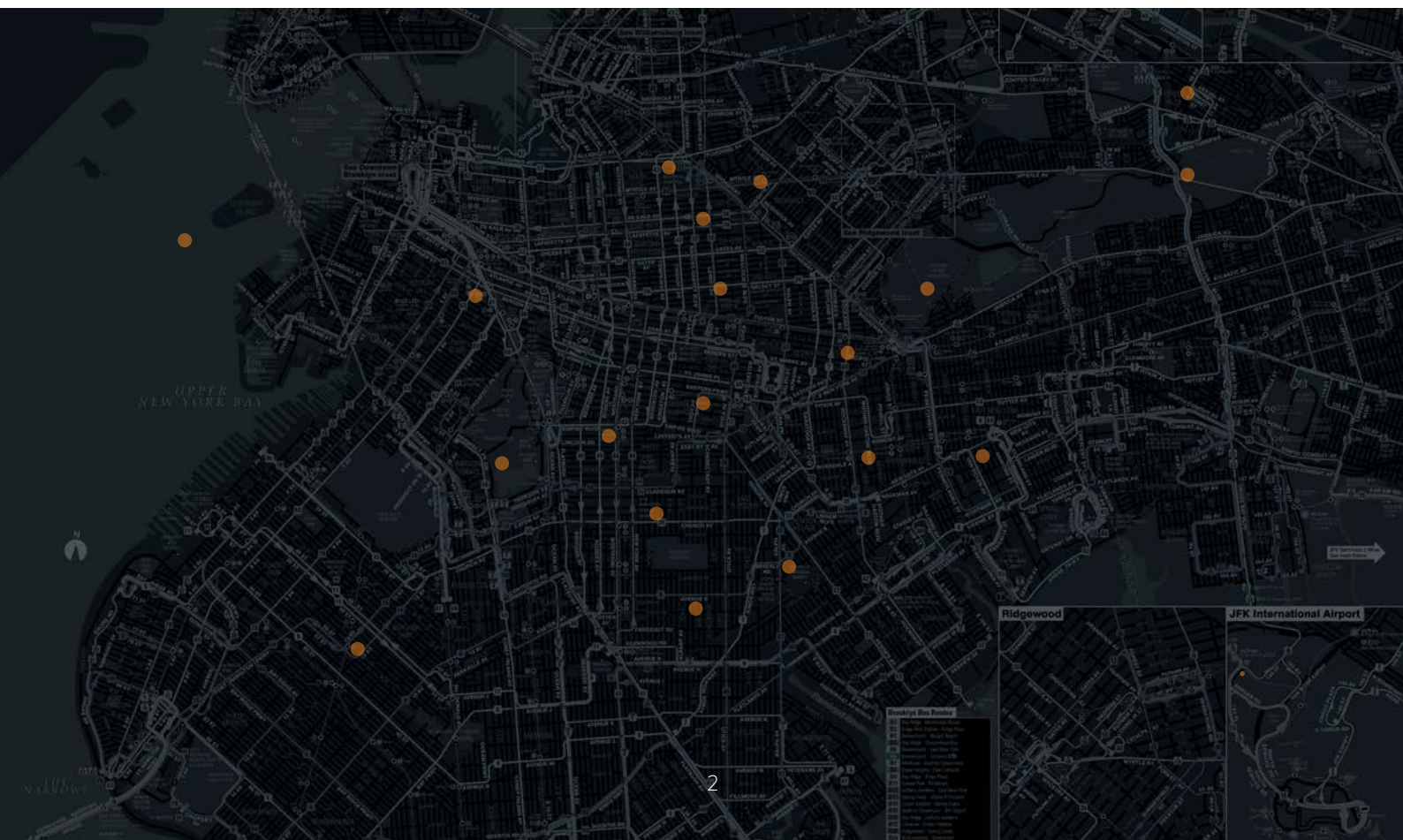
We introduce WebLoc, a cutting-edge location solution which automatically monitors and analyzes location-based data in any specified geographic location, eliminating risks and shedding light on even the darkest online & real-life threats, meeting organizational and industry needs.

The Challenge

Nowadays, most of the intelligence is derived from open-source information. Finding and extracting this vast data remains a big challenge, as well as efficiently generate intelligent insights from these oceans of hidden and complex data signals. While traditional web intelligence solution enhances crucial parts of the investigation and situational awareness, connecting the data to live and real-world information completes the intelligence puzzle.

Our Solution

WebLoc reveals real-world insights about locations, individuals and organizations that are of interest to law enforcement, intelligence agencies, and other qualified organizations. Our unique capabilities enable the user to find anonymous threat actors by automatically analyzing location-based information, enabling the production and dissemination of intelligence and investigative reports. The product is designed to meticulously race through and scan endless digital channels from the web ecosystem, collecting and analyzing huge sums of location-based data to help you protect precious assets.



Customized Solutions for Multiple Domains



Law Enforcement



Anti-Terror Units



Immigration



Health Care



National Security



Public Safety

Benefits

Location-Based Investigation

Track data based on locations, from any device and wide range of sources.
Reveal all the relevant threat actors' locations associated with additional data parameters.

Illegal Activities Detection

Use geofences to discover relations between seemingly non-related data points. Get historical data and use analytic tools to gain insights.

Threat Actor Analysis

Automatically generate accurate threat actor profile based on location data and additional demographics. Reveal targets and collect real-time intelligence with non-intrusive methods for expedited investigations.

Reveal Hidden Connections

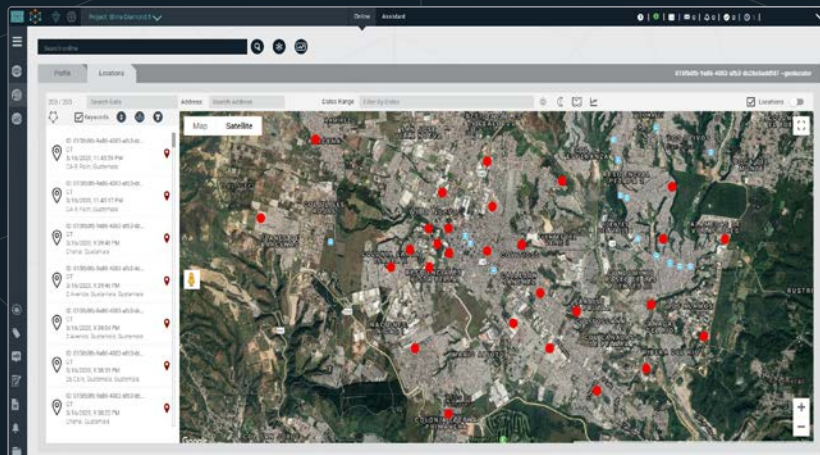
Discover hidden connections of threat actors, temporal and geographic data. Identify associations between historical and present events.

Gain Situational Awareness

Gain unmatched situational awareness in real-time, with Cobwebs vigilantly monitoring data sources. Immerse yourself in torrents of relevant data extracted from the deep, and amplify your intelligence & security.

Our Technology

Our technology compiles and enriches different types of large datasets of location-based data points, to be used for deep geolocation analysis. The information is then displayed on a simple and map-centric interface which allows users to conduct a map-based and visual investigation, integrated with our industry-leading web intelligence solution. The interactive map allows you to filter and analyze data and gain vital intelligence in a click of a button.



Key Features



Location Analysis

Deep analysis of geofences and threat actors, location history and detailed profile data discovery



Real-Time Alerts

Customize inputs to trigger automated real-time alerts for optimal responsiveness



Worldwide Coverage

Access billions of data points to ensure maximum location based data coverage



Live Data Updates

Continuous data gathering and time-saving algorithms guaranteeing quick access to valuable information



Integrative System

Full integration with Cobwebs web intelligence platform ensuring end to end investigation



Geo-based Analytic Tools

Gain insights using various analytic tools to discover hidden information within map visualization



About Cobwebs Technologies

Cobwebs Technologies brings many years of vast experience in the global intelligence market. The company team is comprised of experienced people from military and intelligence agencies as well as technological industries.

Our extensive experience in web intelligence, gained through years of active participation in projects in this field, has enabled us to identify the lack of adequate intelligence solutions to cope with the current technological challenges. We offer innovative cutting edge systems for both national security agencies and private sectors.

Our solutions pinpoint web relations, criminal activities and terrorist threats with a click of a button. We work with clients from all over the world, assisting them in investigations and analysis of targeted data. We provide a range of products, starting from a complete end-to-end solution up to professional services and detailed analyst reports.



Want to learn more about our web intelligence platform and capabilities?
Please visit: www.cobwebs.com
or contact the local sales representative for a demo.