



TRANSCONNECT®

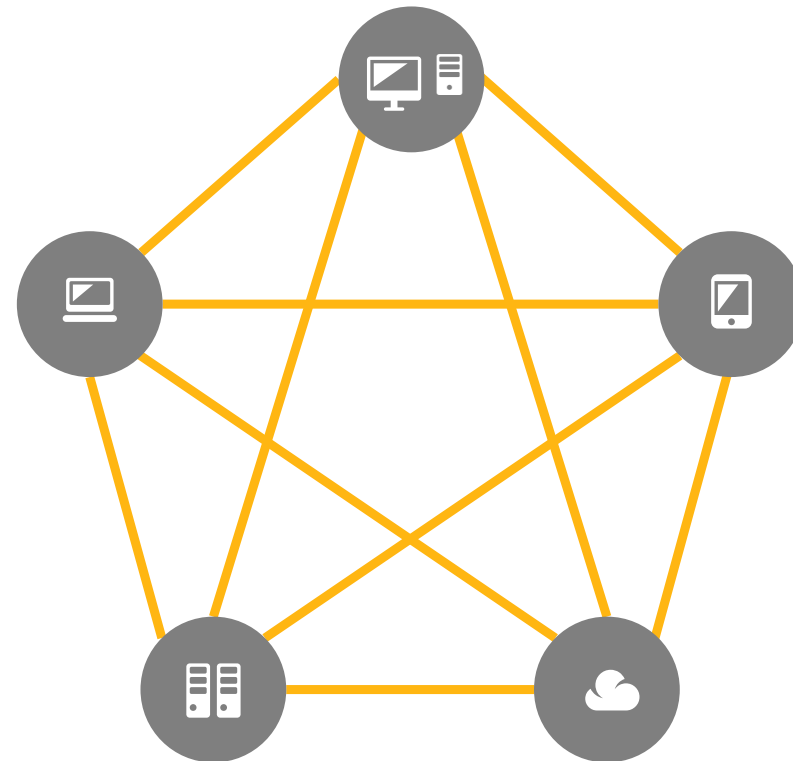
Business Integration Platform

SQL

Spaghetti-Integration

Communication **without** TRANSCONNECT®

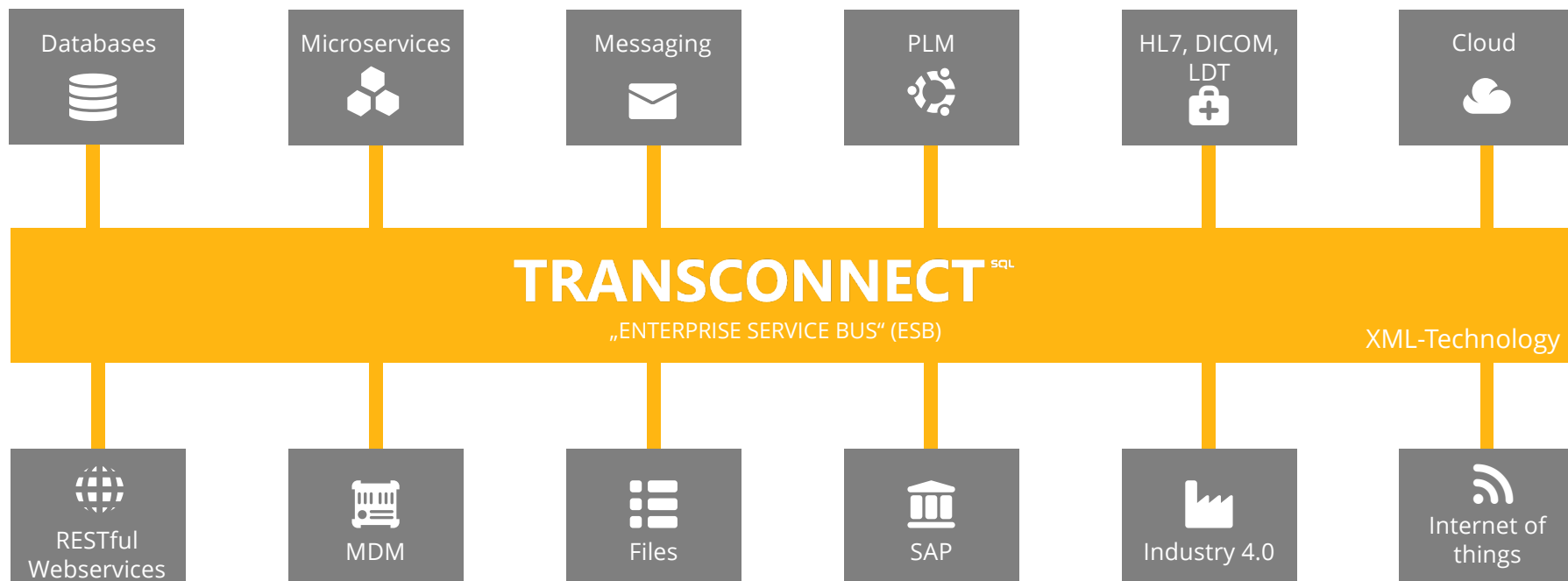
- Numerous interfaces
- No central monitoring
- Technology mix
- Fixed coupling



Integration Platform

Communication **with** TRANSCONNECT®

SQL



Potentials

Cost reduction

Interface standardization and reduction
Reduction of throughput times and response times
Improved monitoring, easier maintenance



Time To Market

shortened implementation period of
integration projects



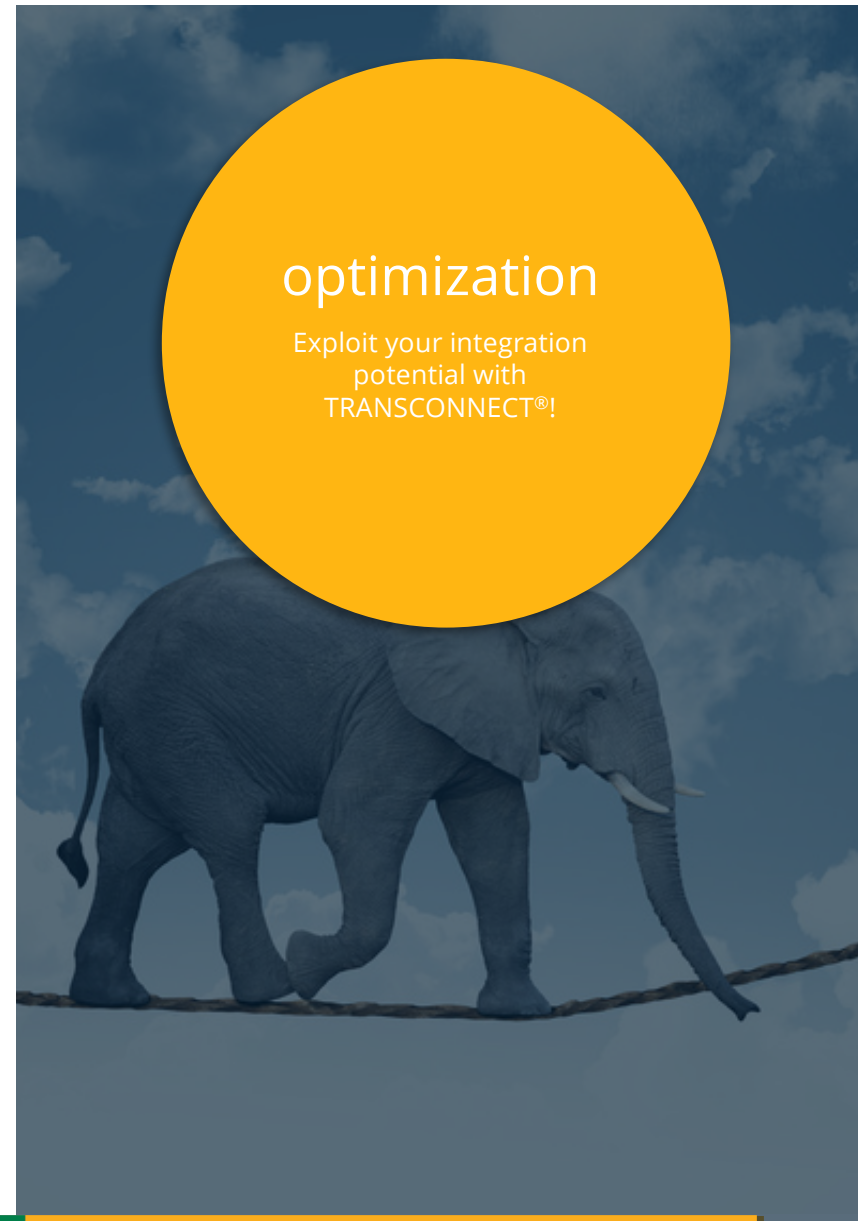
Quality

Reuse of templates
standardization
monitoring



optimization

Exploit your integration
potential with
TRANSCONNECT®!



integration stages

SQL



Processes

Modeling and execution of complex integration processes



Applications

Calling up services and functions



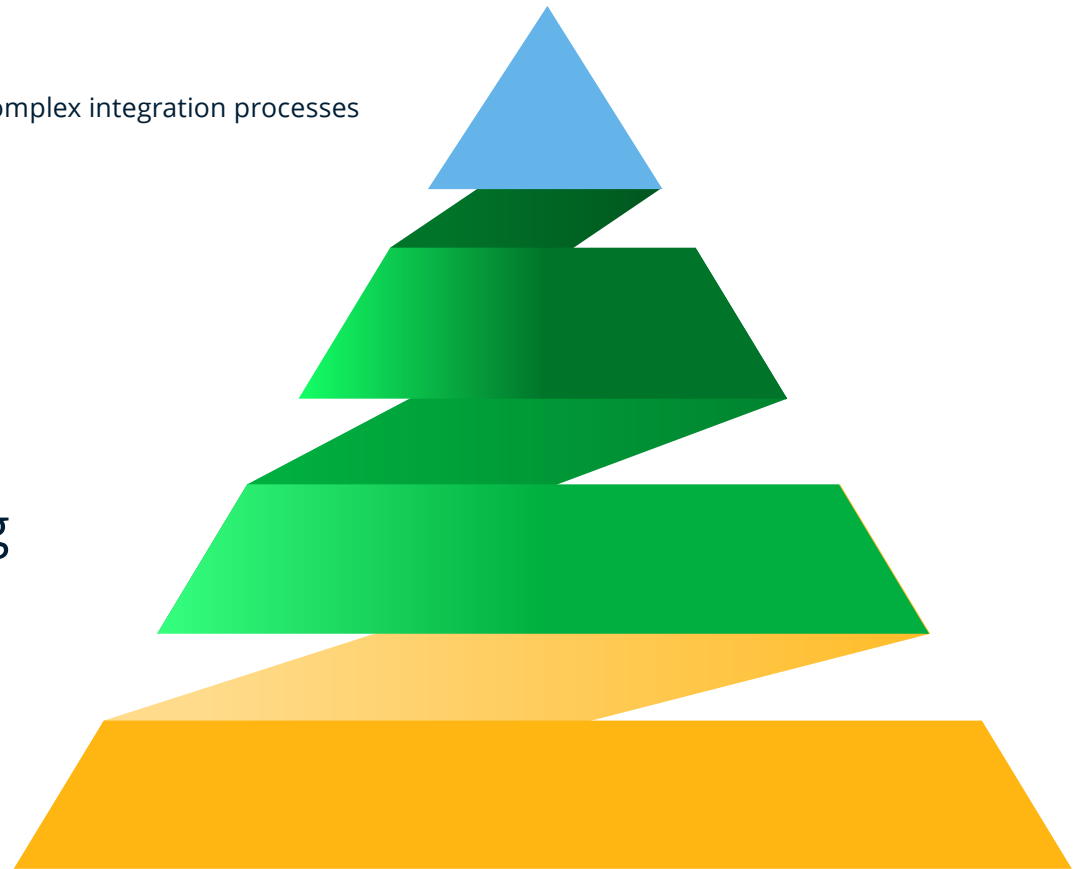
Complex Event Processing

Recognize states in data and trigger activities



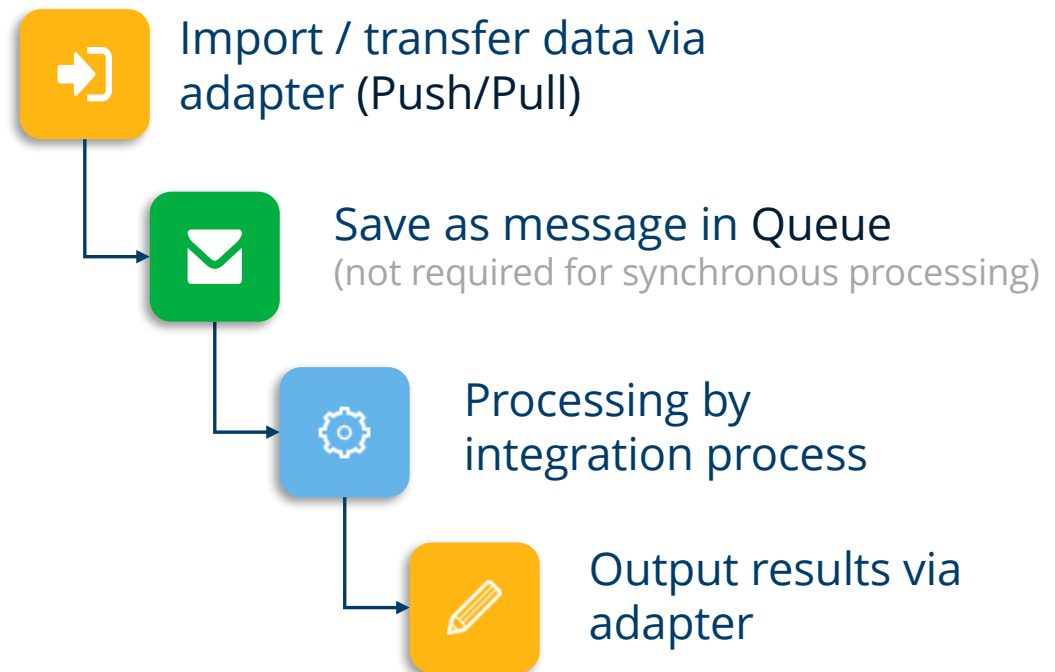
Data

Replication of data



The principle of TransConnect®

SQL



Wide range of applications

SQL

Traditional application integration via Message-Based Middleware (MoM)

- medium to large number of messages
- small to medium message size
- complex workflows, partially extensive Mappings

Data integration for Business Intelligence Systems (ETL)

- manageable number of messages
- very large amounts of data
- medium complexity workflows



scalability

SQL

high availability

universal platform

integration processes

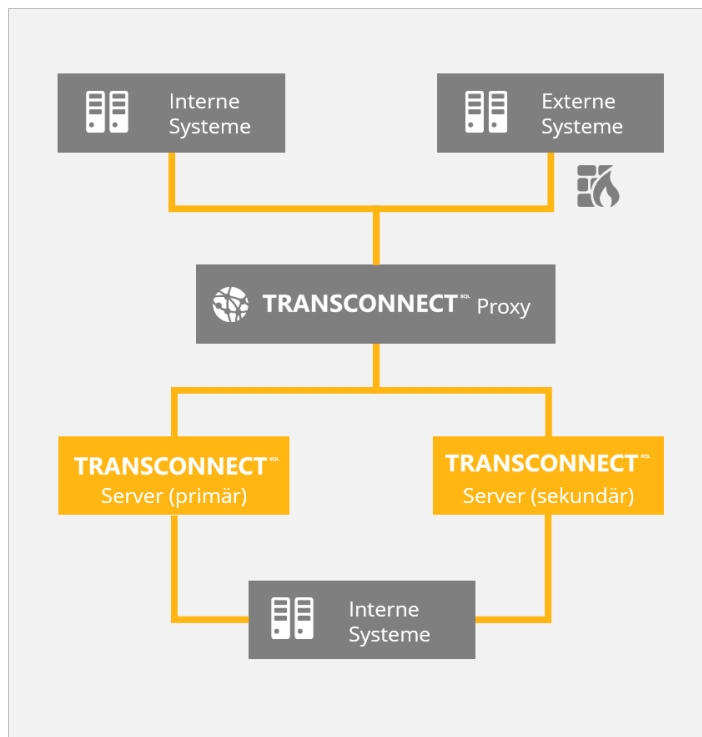
scenario-specific

point-to-Point

The TRANSCONNECT® platform grows with the requirements of your enterprise integration.

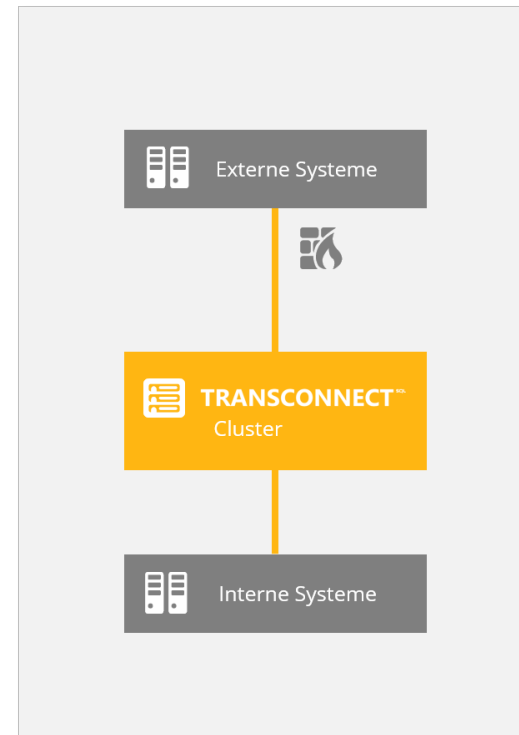


high availability



Hot - Standby

- updated shadow system
- Fail-Over Proxy for TCP-Port communication



Cluster

- synchronized systems
- Fail-Over/Load Balancing Proxy for TCP-Ports

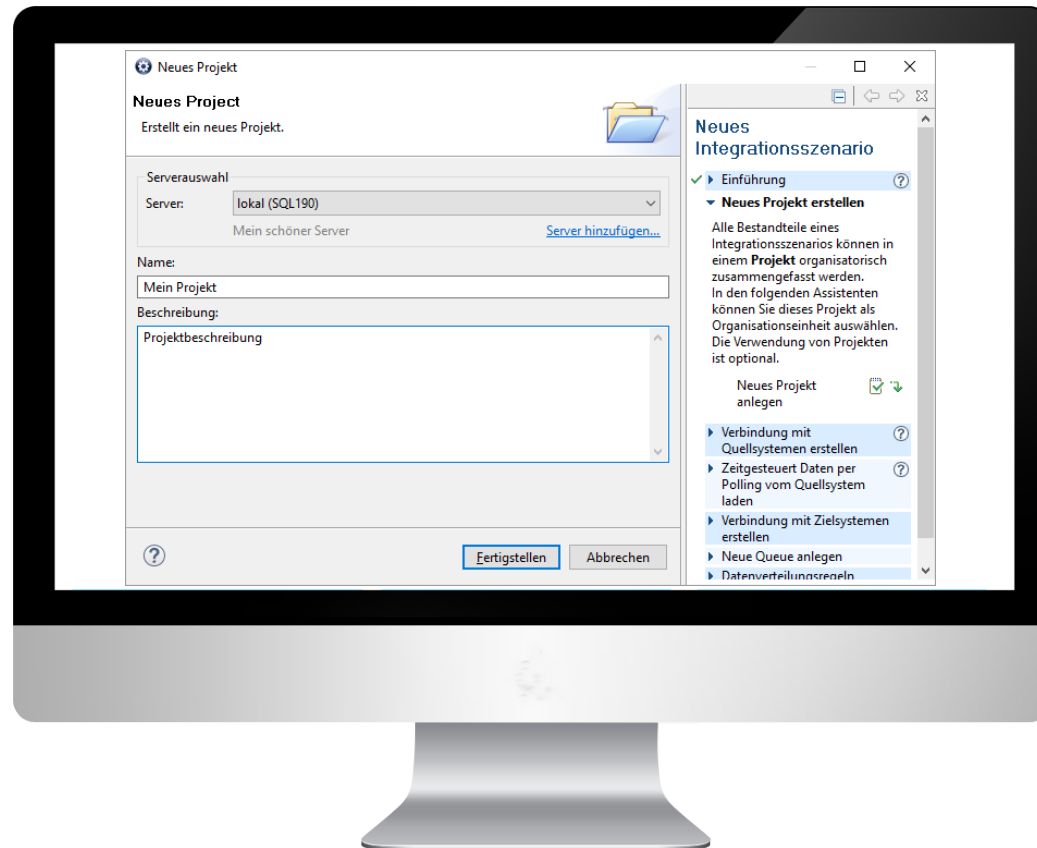


Project-oriented user guidance

SQL

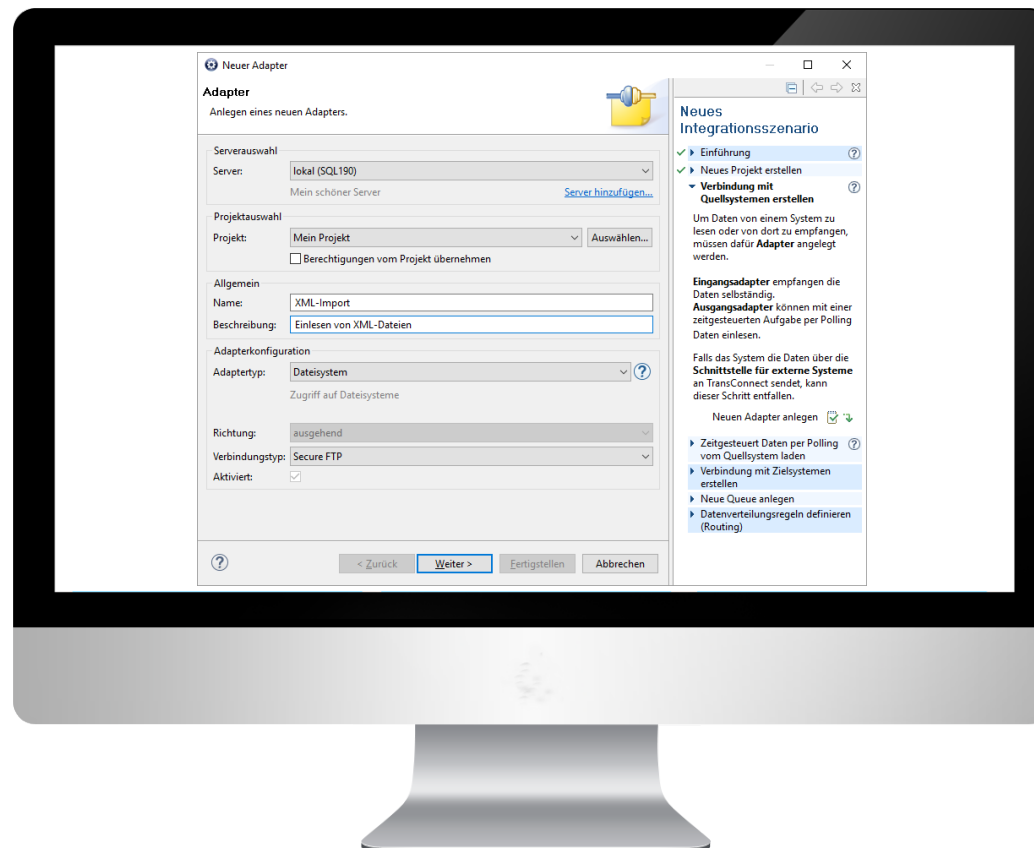
1. Create new project

organizational unit



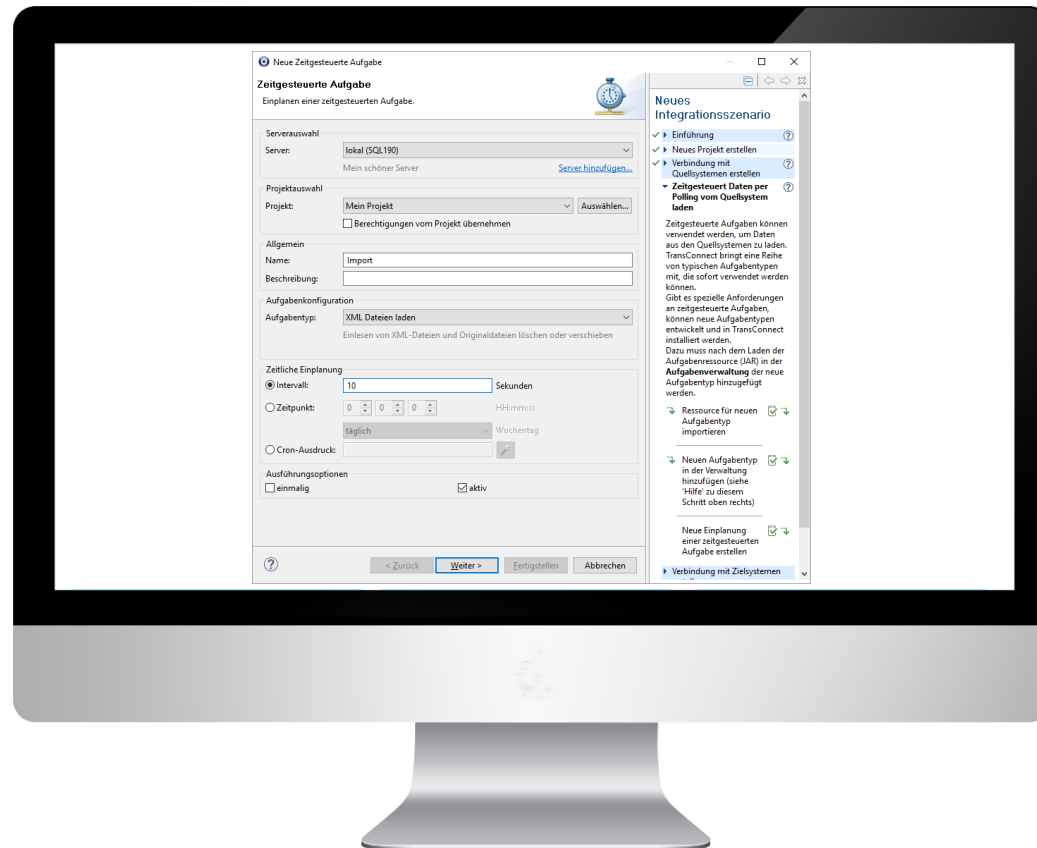
2. Configure source and destination adapters

connection parameters | generation of XML schema



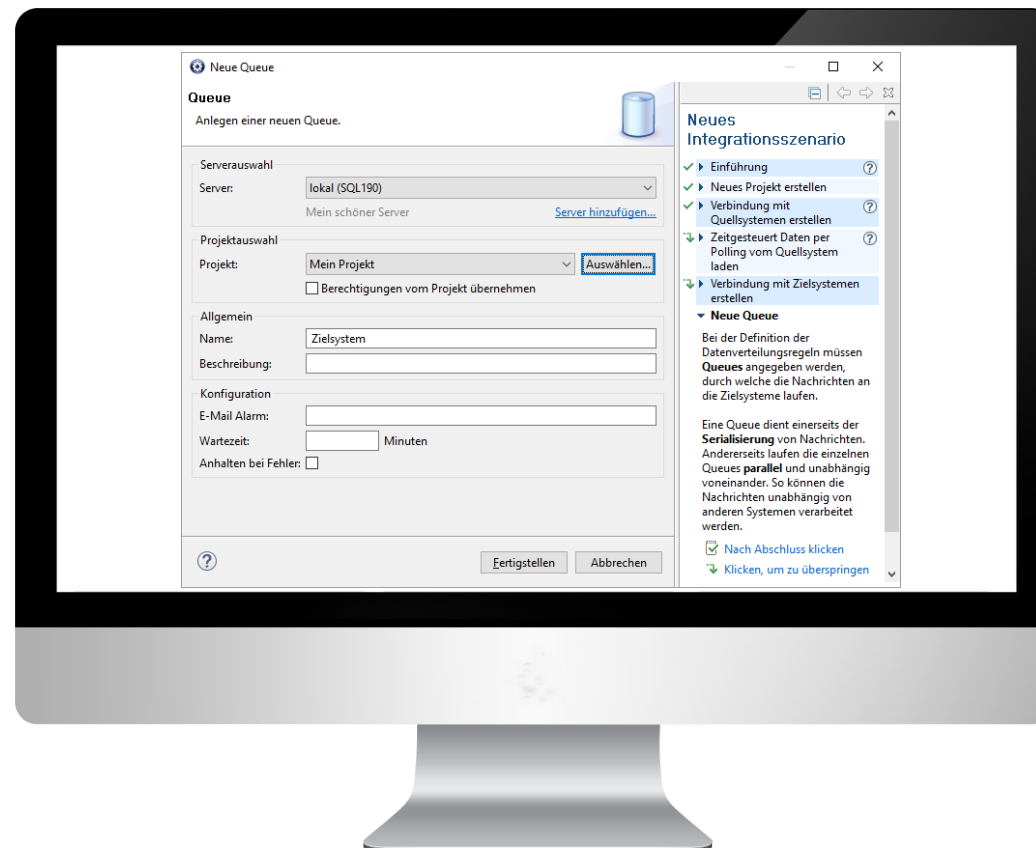
3. Plan scheduled jobs

CRON | Polling databases | Importing files



4. Create Output queues

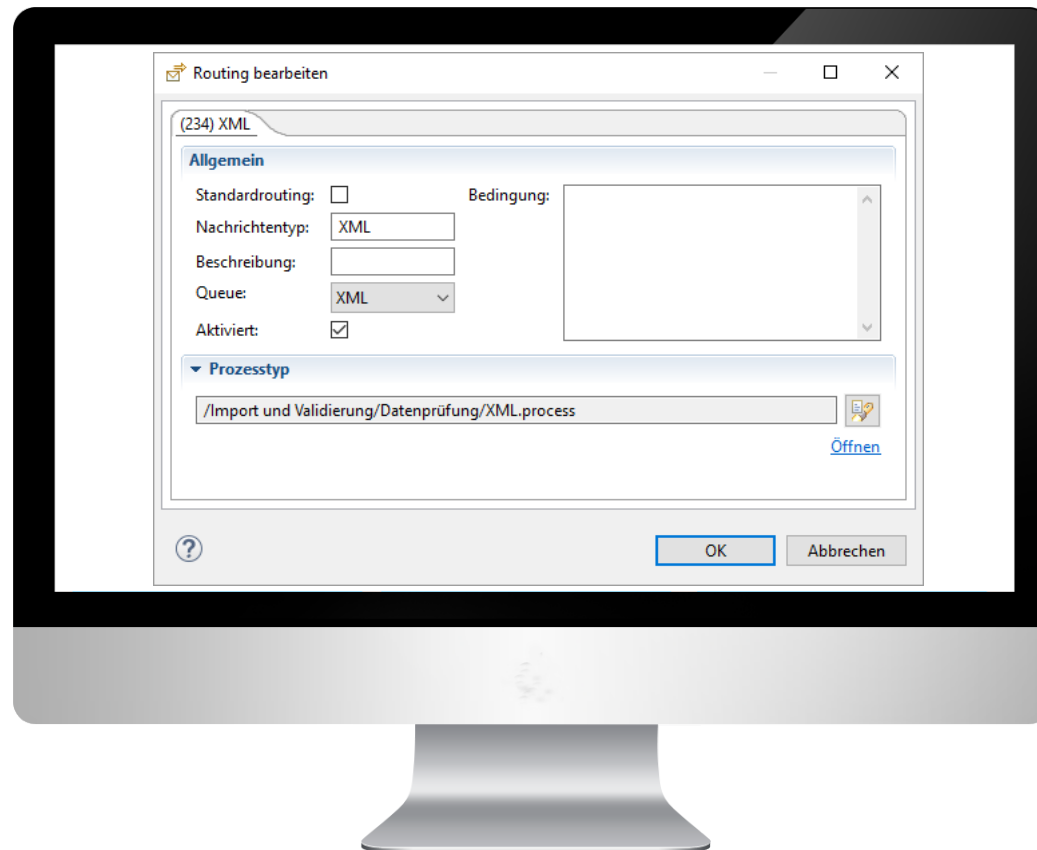
Persistent cache | FIFO | parallelization



5. Create data distribution rules

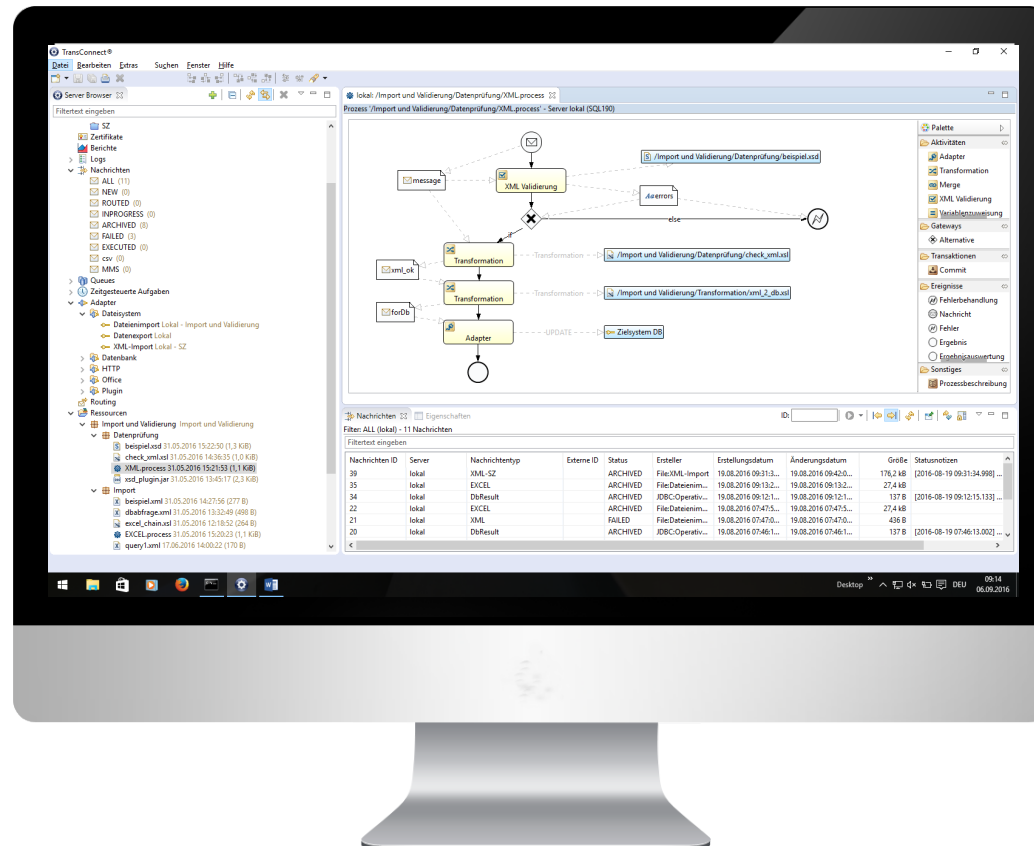
Set recipients | Content-based routing

Distribution in output queues | Link to process definition



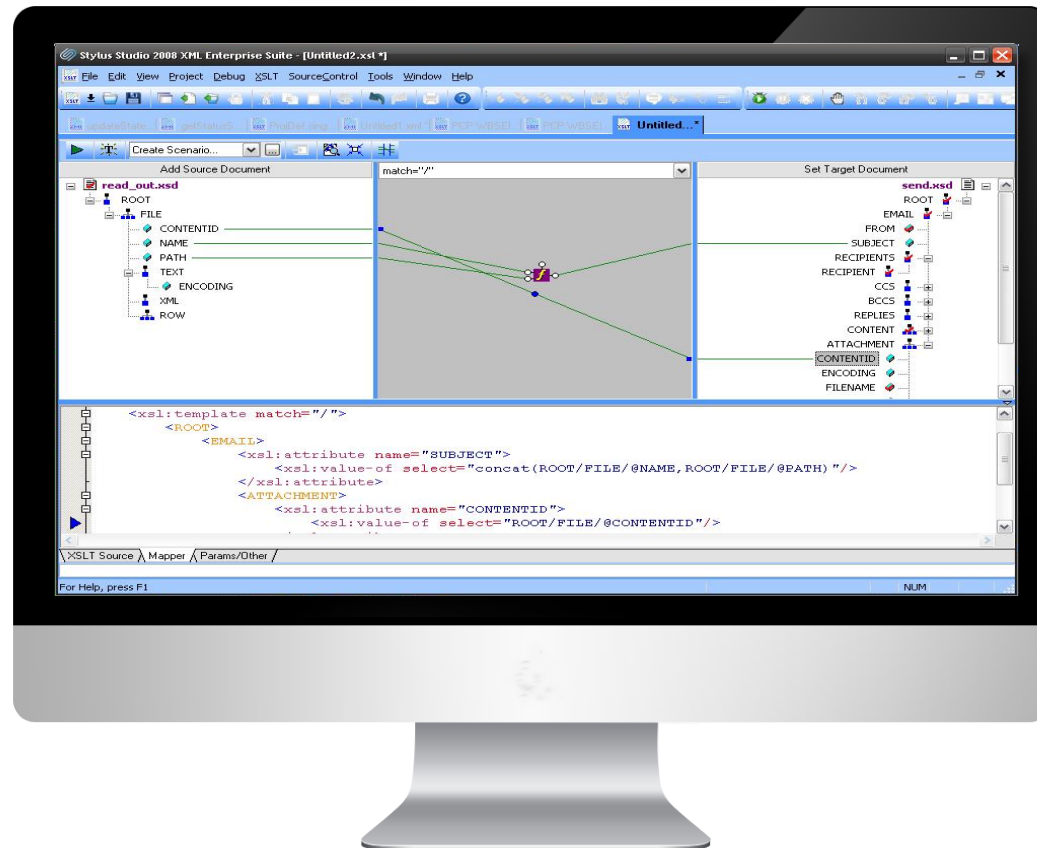
6. Modeling Integration processes

Sequence control | Selection of adapters | Include mappings | error handling



7. Create mappings

XSLT and STX | Text editor | graphic commercial products





TRANSCONNECT®

22 years of competence in business integration

contact

SQL Projekt AG
Franklinstraße 25a
01069 Dresden

Fon +49 351 876 19 0
Fax +49 351 876 19 99
Mail: transconnect@sql-ag.de

