



EcoStruxure™ Augmented Operator Advisor

Presentation V2.3

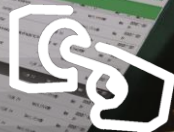
Arvin PITT
IIoT Offer Marketing Manager
IIoT Solutions – Digital Plant

EcoStruxure™ Augmented Operator Advisor

Background

“We want to improve your **operational efficiency** by incorporating **digital technology** your industrial daily life”

EFFICIENCY



Smart Control



Asset
Management

Operator efficiency

EcoStruxure™ Augmented Operator Advisor

Background

Maintain

Build

LIFECYCLE

Operate

Design and
engineering

Startup
and operation

Maintenance &
Services

Optimizes time and costs

Efficiency and flexibility

Availability and durability

EcoStruxure™ Augmented Operator Advisor

Introduction

“The Schneider Electric’s solution on tablet, based on Augmented Reality technology, which gives operators the ability to **superimpose real-time data** and **virtual objects** on to the **real plant environment**.”

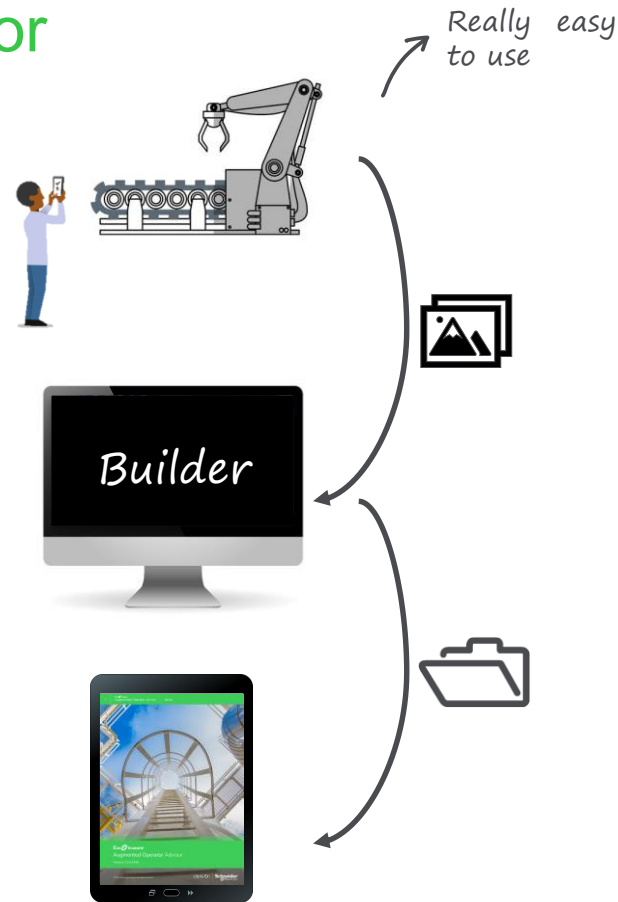
- **Find information faster** with immediate, relevant access in the field (user manuals, instructions, diagrams, etc.)
- **Avoid unnecessary downtime** with the ability to open the electrical cabinet doors virtually
- **Reduce operator errors** during operations and maintenance by locating the right equipment and guiding operators step-by-step to complete the procedures

Empowered workforce

Speed-up maintenance

Business enablers

“50% of time spent on maintenance involves finding information”



EcoStruxure™ Augmented Operator Advisor Components

Builder



EcoStruxure™
Augmented
Operator Advisor
Builder

- Online tool to create custom projects improving operational efficiency with augmented reality
- Yearly license

<http://s360pre-we-wa-frontend.s360pre-we-ase.p.azurewebsites.net/>

Runtime



EcoStruxure™
Augmented
Operator Advisor
Runtime

- Software component to execute projects
- Magelis G5U, Box PC, Edge HMI BOX or Standard PC
- Permanent license for the Runtime
- One per machine

App



EcoStruxure™
Augmented
Operator Advisor
App

- Free on Stores
- Android, iOS and Windows

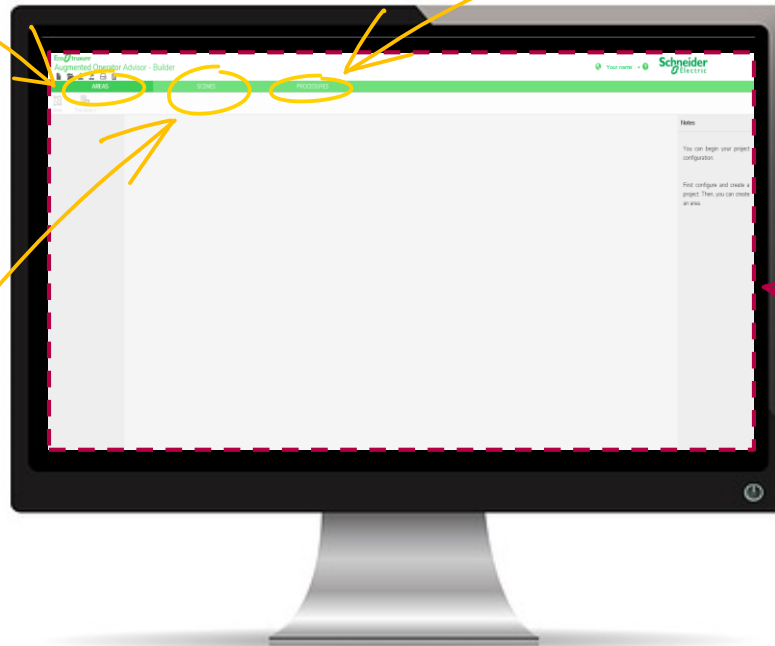
EcoStruxure™ Augmented Operator Advisor Builder

Area: set of several scenes to cover a production line or a machine

Scene: set of images to ensure the recognition in all environmental situation and operator position*

Procedure: set of instruction to follow with or without POI displayed (Point Of Interest)

Project: set of several areas to cover a part of, or a complete factory



*Image: picture of the scene to be recognized

EcoStruxure™ Augmented Operator Advisor

Different levels of Runtime

Depending of the complexity of the projects

EcoStruxure™ Augmented
Operator Advisor **Builder**
Annual fees

EcoStruxure™ Augmented
Operator Advisor **Runtime**
for 1 machine
Permanent License

EcoStruxure™ Augmented
Operator Advisor **Runtime**
multi-area
Permanent License

Essential offer: 3
different levels
/machine

To build an **unlimited**
number of projects

- **Essential Level 1:**
1 area and 20 POIs
- **Essential Level 2:**
1 area and 50 POIs
- **Essential Level 3:**
1 area and **unlimited**
information

For a project managing
several machines or
production lines: **unlimited**
number of information and
procedures

Essential offer and AR
Procedures
/machine

To build an **unlimited**
number of projects

The **3 different Levels** of the
Essential offer + 10, 20 or
unlimited procedures

Why not try it for free
during **42 days**?

EcoStruxure™ Augmented Operator Advisor

42 Day Free Trial

- Test AR with your equipment in your environment
- Same features as the full version
- 42 Days Access to:
 - Builder: Web tool, can be used during 42 days after the customer account creation without activation, projects created aren't lost
 - Runtime (for one machine): Software PC, can be used 42 days without activation code
 - App: available on Store for FREE, can be used permanently after download without limitation

→ *"Industry 4.0 movement is underway, are you going to be part of it?"*

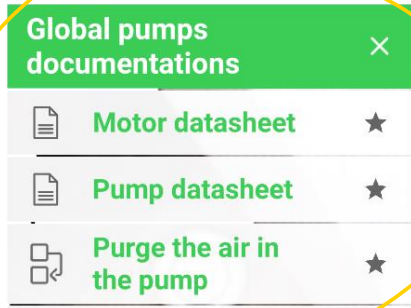


EcoStruxure™ Augmented Operator Advisor

App interface

Information banner

Point of interest (POI)*



Point of interest List
(up to 5 information)

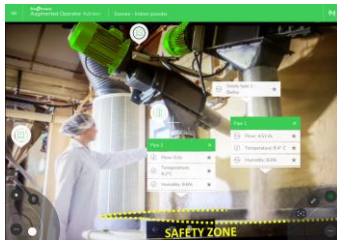


*POI opportunities: **list** (Label, Images, Process variable, Data from a SQL database, Documents: pdf files, Electrical diagrams, Web pages, Videos), **image**, **variable** or **text** to display directly on the screen

Shortcut menu

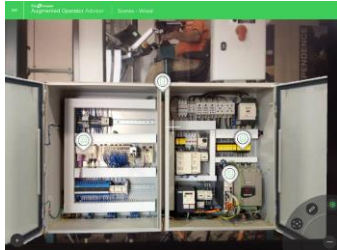
EcoStruxure™ Augmented Operator Advisor

Different examples of use



In front of a machine or a production line

Immediate access, in real time, to relevant information in the field for operations and maintenance: machine history, variables of process, documents (products, installations, instructions, electrical diagrams, etc.)



In front of an electrical cabinet or an hidden part of a Machine

Fast diagnosis without lockout or electrical qualifications, through the virtual doors opening the cabinet: device status, variable values (current, power, speed, etc.), documents (products, installations, manuals, electric diagrams, etc.)



For an overall view

Simultaneous view of reality and data. Safe and quick detection of anomalies (alarm display, significant process variables) and access to KPIs (display parameters and key information, production progress, performance indicators, etc.)

EcoStruxure™ Augmented Operator Advisor

At a glance

Builder

- Web-based application

Business model

- Project Mode or Do It Yourself

Licensing

- BT through IDMS account, RT different levels

Notes

- Multi-user, pushed to RT, available via RT

User Management

- Multi-user RT from User Database on RT, modifiable online through web interface (RT)

Runtime Devices

- Server based Windows software, permanent license, 3 levels

Multi-language

- Builder and application available in 8 languages



EcoStruxure™ Augmented Operator Advisor

At a glance

Multi-iOS

- IOS, Android and Windows

Triggers actions

- Change POI visibility (hide/show), POI background color or blinking POI, displayed text

Points of interest

- Real time data from PLC, documents, images, web pages, notes, labels

Access to document

- Technical documentation (PDF), diagrams, images, videos

Access to hidden parts

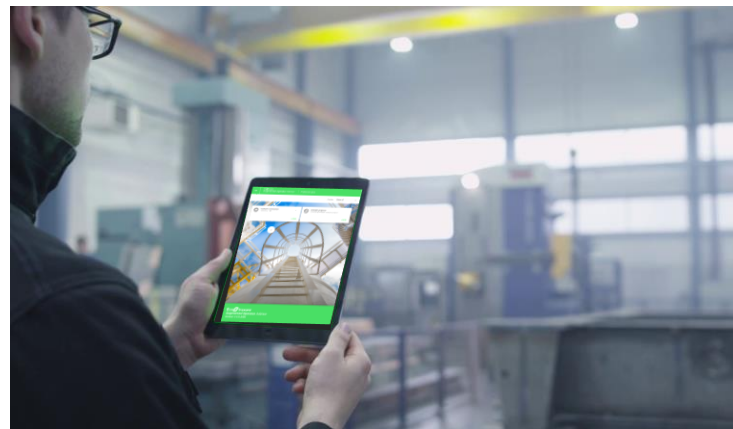
- Example: open virtually an electrical cabinet

Cybersecurity

- Different levels management, login and password access

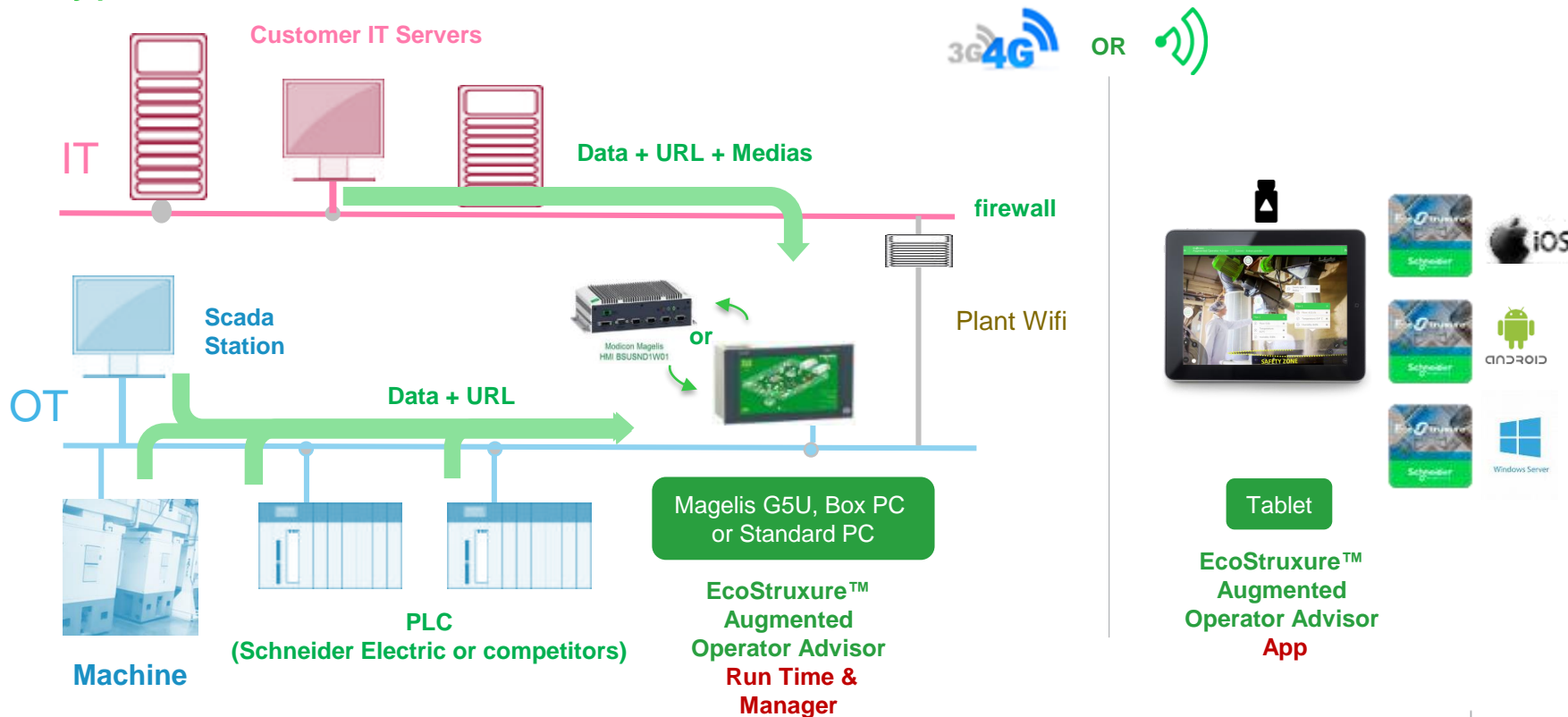
Other feature: zoom a scene, freeze the image, favorites, highlight of defaults, demonstration mode, detection mode (tag or 2D image), procedures

“With EcoStruxure™ Augmented Operator Advisor, get ahead of your competitors”



EcoStruxure™ Augmented Operator Advisor

Typical architecture



EcoStruxure™ Augmented Operator Advisor

Unique value proposition for end-user: customer benefits



This is my end-user, how can I improve the daily life of its plant?

- ✓ Improve the efficiency of day to day **operations** and **maintenance** by offering immediate access to relevant information in the field
- ✓ Reduce **the time and cost of operations and maintenance** by making process information available in real time on site outside the control room
- ✓ **Reduce operator errors**



Reduce machine downtime



Decrease search time information

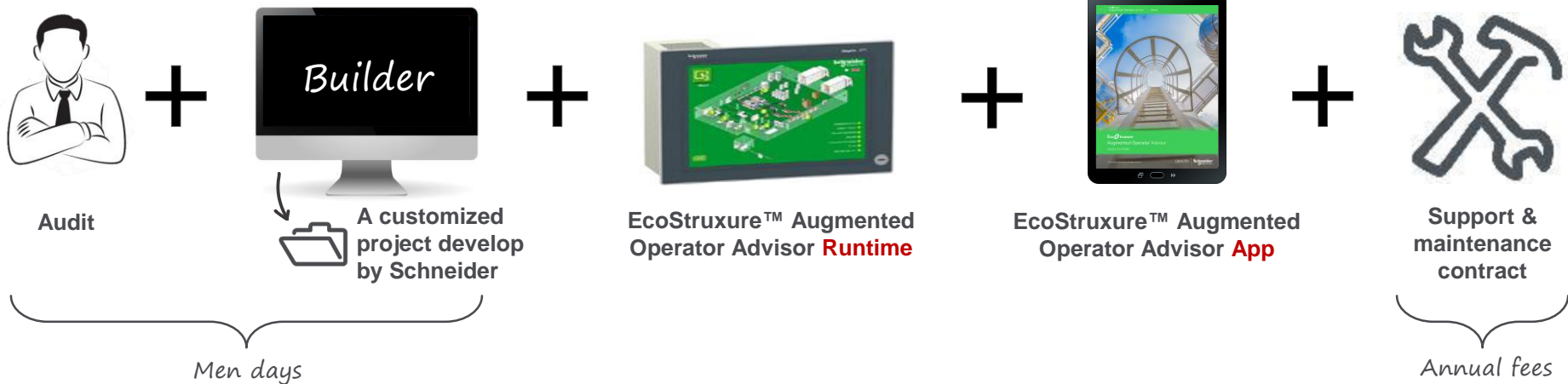
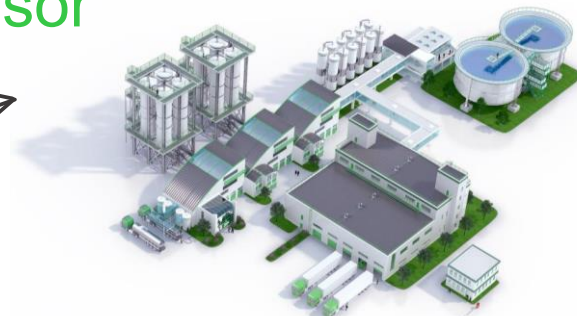


Guided and facilitated interventions

EcoStruxure™ Augmented Operator Advisor

Business model (x2)
Project Mode

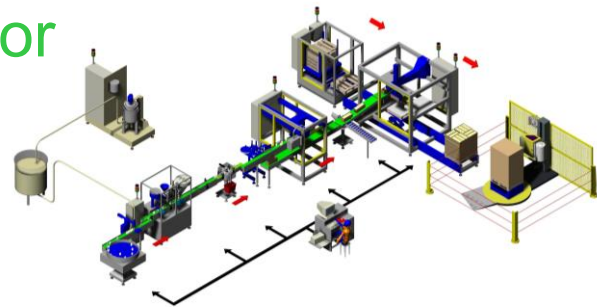
Schneider Electric develops the customized projects for the customers



EcoStruxure™ Augmented Operator Advisor

Business model (x2)
Do It Yourself

Machine Builders subscribe to develop by themselves their projects



EcoStruxure™ Augmented
Operator Advisor **Builder**



Audit



EcoStruxure™ Augmented
Operator Advisor **Runtime**



EcoStruxure™ Augmented
Operator Advisor **App**

*Training /
Support
for project development*

THANK YOU.



For more information please see:
<https://www.schneider-electric.com/en/work/services/field-services/industrial-automation/performance-optimization-services/ecostruxure-augmented-operator-advisor.jsp>