

Lead the post-pandemic workplace

with Lingaro and Microsoft

With many employees
shifting to remote work,
Microsoft Teams has 3X
more daily active users

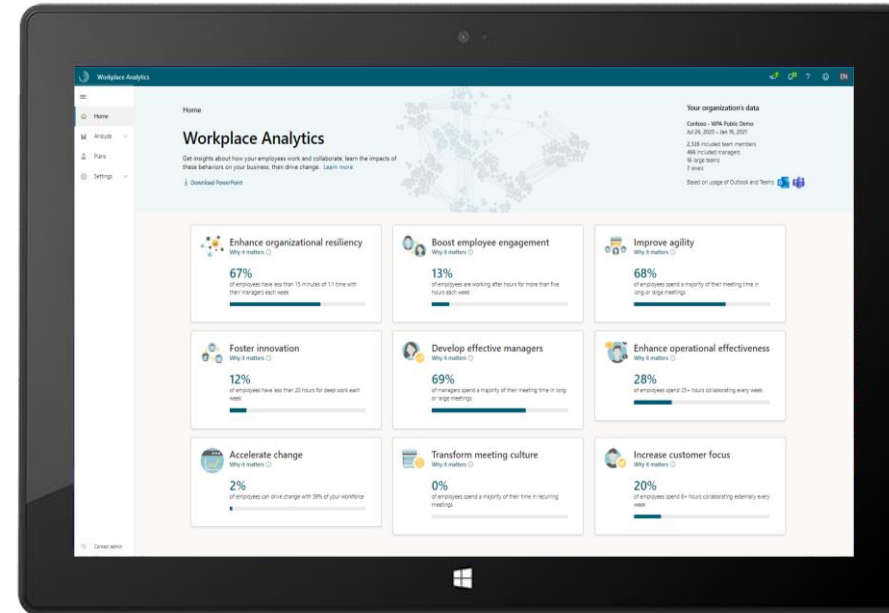
The move of employees to remote work has accelerated workplace digitalization and exponentially increased the number of data points representing how people work, collaborate, and engage in companies.

To adapt to constant disruption in the workplace, business leaders can unleash the value of this powerful data using insights from everyday work to explain, predict, drive, and measure the impact of day-to-day actions on business outcomes.

Let Workplace Analytics turn your Office 365 collaboration data into powerful new insights for enterprise productivity

Workplace Analytics leverages Office 365 collaboration data to deliver powerful new insights for enterprise productivity. It provides a way for a company to understand organization-wide communication behaviors and collaboration patterns and how they influence productivity and corporate performance.

To learn more, request a free Workplace Analytics overview



Lingaro has the experience to unleash this powerful dataset using insights from everyday work

Leveraging Microsoft Workplace Analytics, Lingaro equips leaders to respond to workplace disruption, plan recovery, and reimagine their organization to support greater resilience.

Lingaro is a Gold Microsoft Partner through more than 10 years of partnership with Microsoft, Lingaro is continuing to build trust and helping enterprises win the digital transformation.



Gold DevOps
Gold Data Analytics
Gold Data Platform
Gold Application Development
Gold Cloud Platform



Respond
Navigate the now



Recover
Plan the comeback



Reimagine
Shape the future

WpA QuickStart

Accelerate your journey to Workplace Analytics with rapid insights into productivity opportunities for your organization

- ✓ Discover your organization's collaboration patterns
- ✓ Get analyses and actionable insights across three common business outcomes
- ✓ Identify the biggest opportunity areas, and how to tackle them



Discover your organization's collaboration patterns. The WpA Quickstart covers:

Three common business outcomes



TRANSFORM MEETING CULTURE

- How much time do employees spend in long / large and recurring meetings?
- Are employees wasting time in low quality meetings?



DEVELOP EFFECTIVE MANAGERS

- Are managers having regular 1:1s with employees?
- Do managers delegate and empower their teams?
- Do managers have capacity to guide their teams and focus on strategic work?



BOOST EMPLOYEE ENGAGEMENT

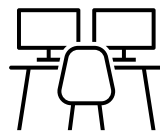
Wellbeing focus

- How are employees currently collaborating?
- Do employees have high after-hours?
- Are employees at risk of burn out?

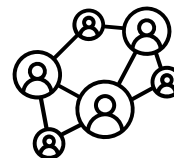
And two business outcomes of choice:



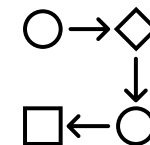
STRENGTHEN
CUSTOMER AND
SUPPLIER
RELATIONSHIPS



MEASURE
DIGITAL
WORKPLACE
ADOPTION



SUSTAIN ORG
CONNECTIVITY /
DIGITAL
COLLABORATION



ENHANCE
OPERATIONAL
EFFECTIVENESS

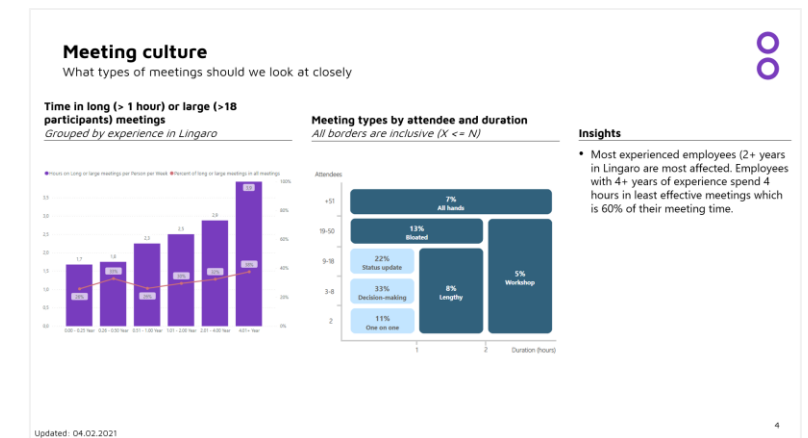
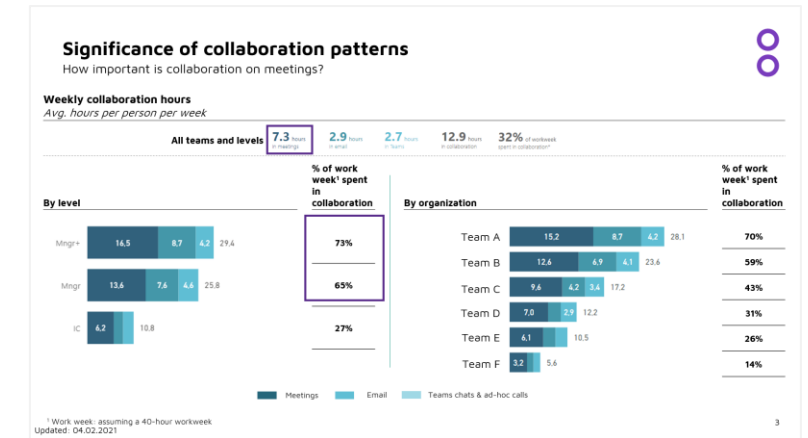
Workplace Analytics QuickStart

Get analyses and actionable insights across three common business outcomes

Building on firsthand experience with Workplace Analytics, Lingaro' QuickStart service offers a straightforward and quick way to obtain rapid insights into productivity opportunities for your organization.

The implementation will take 4-6 weeks and will include:

- Guidance on the setup and configuration of Workplace Analytics ensuring smooth implementation and communication with key stakeholders.
- Discovery of your organization's collaboration patterns
- Delivery of actionable insights across 3 business outcomes: transform meeting culture, Develop effective managers and Boost employee engagement
- Delivery of actionable insights across 2 business outcomes of choice previously assessed for feasibility
- Identification of the biggest opportunity areas, and how to tackle them
- Hands-on training, targeted at key user personas

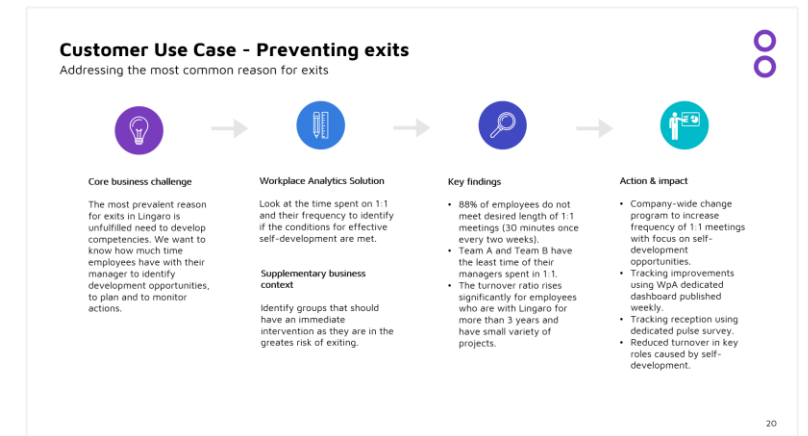
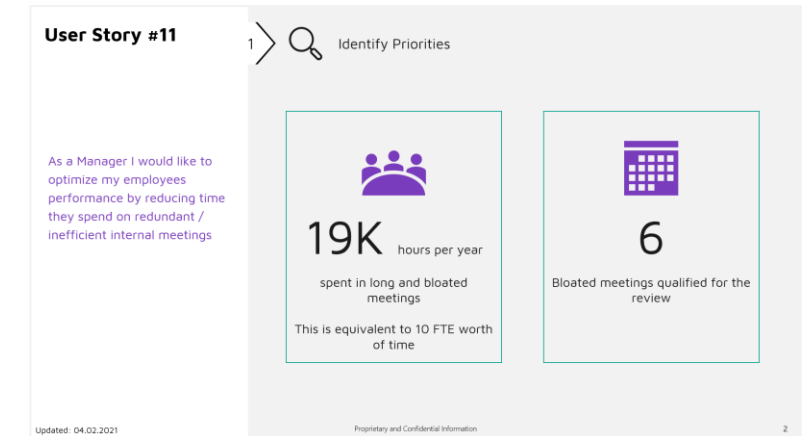




Identify the biggest opportunity areas, and how to tackle them

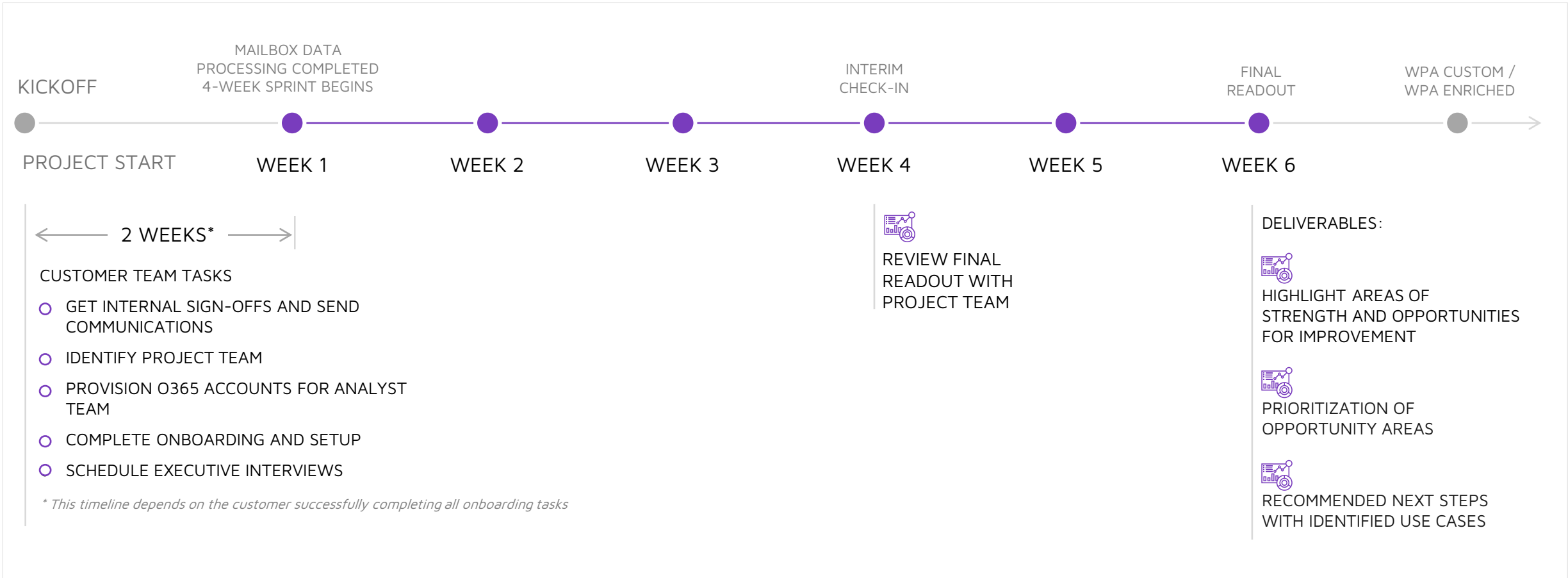
The Opportunities and Recommendations Readout covers an overview of the potential of insights delivered by using Workplace Analytics

- Highlight areas of strength and opportunities for improvement
- Share findings and communicate insights
- Prioritization of opportunity areas with most impact
- Recommended next steps with identified use cases





High Level Workplan



Week 1 begins after

- Customer WpA Instance is up and running
- MSFT project team is credentialed in customer O365 tenant



Case Study: Increasing employees' collaborative productivity after the move to remote work

Core Business Challenge

A Consulting company was receiving early warnings from employees on high amount of hours spent in meetings since the move to remote work. Question to be covered was.

Workplace Analytics Solution

The company deployed the Workplace Analytics Business Continuity Dashboard to gain immediate insights into how shifting to remote work was impacting the company.

Action & Impact

Improve meeting planification with definition of clear agenda and people required to avoid unproductive meetings

Break long planning meetings in slots having only people required in each of the agenda items and release time of people once topic is covered

Releasing meeting hours allowed employees to focus on productivity of tasks

Findings

1



19K

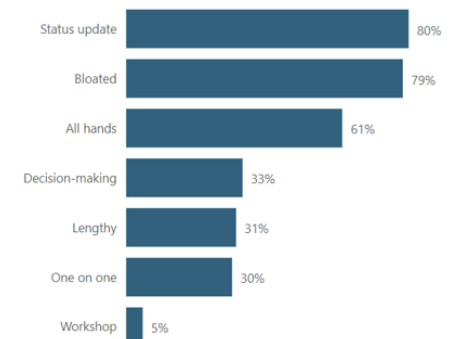
hours per year
spent in long and large meetings

This is equivalent to 10 FTE worth of time

2

79%
of recurring
hours are done in long and large hours

Recurring meeting hours % by meeting type





Case Study: Identifying key collaboration patterns in top performing Accounts

Core Business Challenge

The Sales Enablement organization from a Consulting company wanted to improve sales effectiveness and used WpA to obtain insights on collaboration patterns with customers

Workplace Analytics Solution

Sales Enablement analysts combined account performance data with WpA signals to identify which practices consultants at top performing accounts:

- Average weekly time in contact with customer apps in Top vs Bottom performing accounts
- Average number of all engagements per week

Action & Impact

Review of key drivers in lower collaboration time at bottom accounts

Leverage best communication practises which are performed at top performers

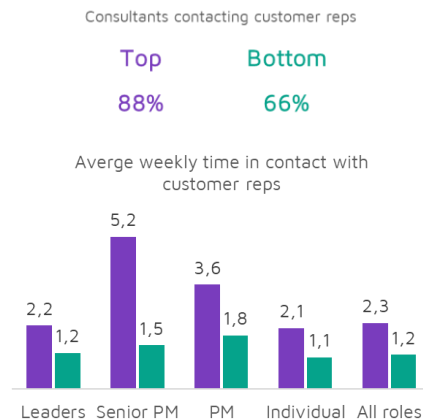
Monitoring of impact in higher collaboration hours with customers

Findings

1

Consultants in top performing accounts spend more time collaborating externally

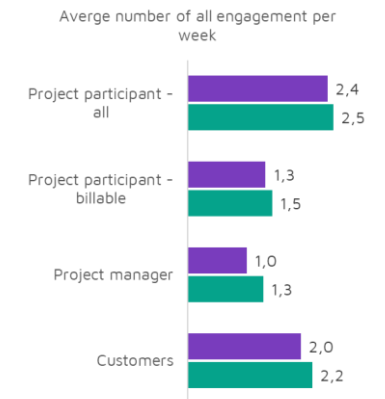
The most successful initiatives have project managers much more engaged in communication with customers.



2

Time spent on other assignments does not show to influence the time spent in collaboration with customers

The comparison of number of other commitments shows very close figures.





Digitize. Disrupt. Lead.

Contact Lingaro to enhance your organization resilience

sales@lingarogroup.com

lingarogroup.com