

Turn asset tracking data into decisions

Telstra Track and Monitor can help your business track moving assets, reduce costs, and improve the customer experience.

Today, your customers demand a better service faster, and cheaper. To meet these demands, you need to be more efficient managing your moving assets.

The more visibility you have, the better you can manage your business and turn data in to decisions.

We'll deliver the right asset tracking solution for your business.

Device

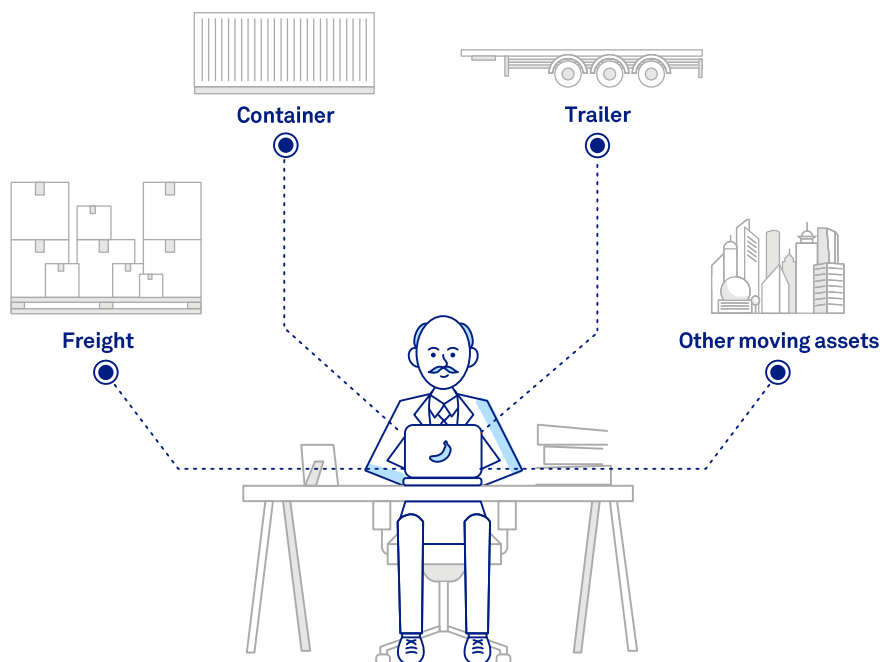
Track assets of different sizes and values with enterprise grade devices designed to suit your needs.

Network Technologies

Track assets using either Cat-M1 (LTE-M) or Bluetooth®






Web Portal or API

A secure onshore cloud platform hosts tracking data displayed in a web portal or mobile app. Integrate with your own systems via API (fees may apply).



Asset trackers for your needs

coming soon

					
	Cat-M1 Solar Tracking Unit	Bluetooth® Tracking Unit	Bluetooth® Tracking Tag	Cat-M1 Tracking Unit	Cat-M1 Rechargeable Tracking Tag
Network Technology	Cat-M1 (LTE-M)	Bluetooth Community	Bluetooth Community	Cat-M1 (LTE-M) and Bluetooth Community	
Dimensions	262 mm x 88 mm x 30mm	45mm x 38mm x 21mm	39mm x 5.5mm	114 X 80 X 39mm	35 X 75 X 19mm
Tracking Frequency	1 per minute – moving 1 per 4 hrs - stationary	Proximity to Telstra Bluetooth Finding Community		1 per day (Cat-M1) +Proximity to Bluetooth Finding Community	1 per hr- moving 1 per 24 hrs- stationary +Proximity to Bluetooth Finding Community
Battery	Non Replaceable – Solar charging	Non Replaceable	Replaceable	Replaceable	Rechargeable
Battery life	Up to 4 months per full charge (based on 1 track/hour)	Up to 5 years	Up to 12 months	Up to 5 years	Up to 6 weeks per full charge (based on movement)
Hardware cost (and Min cost)	\$499 (per device) (min cost \$499 + \$14.50 service fee) Hardware repayment options available	\$49 (Min order 20) (Min cost \$980 + \$30 service fee)	\$29 (per device) (Min cost \$29 + \$1.50 service fee)	\$199 (per device) (Min cost \$199 + \$10 service fee) Hardware repayment options available	\$179 (per device) (Min cost \$179 + \$10 service fee)
Monthly Service Fee per device (ex GST)	\$14.50 p/mth	\$1.50 p/mth	\$1.50 p/mth	\$10 p/mth	\$10 p/mth

Visibility at a glance, detail at a click.

- visibility of moving assets location details when in range of network technologies
- data on your assets' last known approximate location sent via cost efficient network technologies
- create tags and geozones to quickly search for specific or multiple assets by asset type, job, or location

Make decisions based on data in the moment

- make decisions based on the historical and last known approximate location of the asset at the click of a button
- location data means you can manage assets at scale and serve your customers better

Telstra IoT network technologies

Telstra provides network technologies to reliably and securely support a range of IoT deployments:

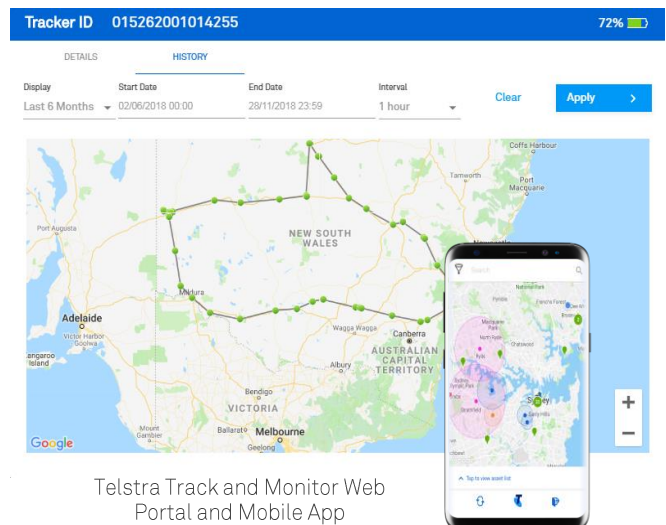
• CAT- M1 (LTE-M)

The Telstra IoT Network has around 3 million square kilometres of coverage for Cat-M1 devices. It's Australia's largest low power wide area (LPWA) footprint that supports IoT securely at scale and at low cost.

• Telstra Bluetooth Community

Bluetooth finding is supported in part by a crowd sourced community of users whose devices, if enabled, help locate items.

- As well as over 4000 Telstra Air enabled payphones providing location updates when a unit or tag is within range of the payphone and other hotspots.
- Plus your own app users and enabled devices



A professional services partner you can trust

The Telstra Purple professional services team can help you get started quickly with a solution which is ready to scale:

Innovate with confidence knowing we:

- have the expertise to take you through a design-led collaborative approach for your IoT solution
- are invested in the future of IoT and in helping you in solving the right problem, with the right solution
- offer a pilot program to help you integrate Track and Monitor location data with your existing systems to develop dashboards (fees may apply)
- implement solutions which can assist you to reduce costs, deliver a better customer experience and business insights

 [Telstra.com/TrackandMonitor](https://www.telstra.com/TrackandMonitor)

Click 'GET IN TOUCH'





Telstra Track and Monitor Cat-M1 Solar Tracking Unit

Track high-value, non-powered assets

Built to withstand the elements, the ruggedised Cat-M1 Solar Tracking Unit can be attached to containers, trailers, heavy equipment and other large, movable assets. It has a rechargeable solar battery that can last up to 4 months between charges, with a device life up to 5 years.

Set up couldn't be easier

There's no need to invest in infrastructure or software – and you won't be burdened with new, complex processes. Unboxing and initial activation takes approximately 5 minutes – once your account is setup, simply attach the unit and begin tracking via our online portal.

~3m SQ KMs for Cat-M1 Devices (Australia)

The Cat-M1 Solar Tracking Unit uses the Cat-M1 (LTE-M) technology on Telstra's IoT network which reaches around 3 million square kilometres, so you can track your assets on a low power wide area network.

Budgeting is a breeze

The Cat-M1 Solar Tracking Unit can be purchased upfront or via monthly repayments over 12, 24 or 36 months so you can forecast costs with confidence.

And we have volume pricing options



Cat-M1 Solar Tracking Unit.

Ruggedised, compact and built to perform

Specifications

Dimensions	262mm x 88mm x 30mm
Weight	0.54kg
Location	GPS (multi-constellation)
Tracking Interval	Up to 1 per minute when moving Up to 1 per 4 hours when stationary Bulk upload of data every 10 min
Battery Life	4 months without charging at 1 report per hour
Cellular Connectivity	Telstra Approved Quectel BG96 Module (CAT-M1)
Operating Temperature	-20°C to +70°C
Housing	Industrial Grade Polycarbonate Crush Resistance IP67 Certified
Solar Charging	1.5W
Certifications	FCC, IC, CE, PTCRB, RCM
Environmental	RoHS, Reach, SAEJ1455, ISO16750

Things you need to know

Battery life depends on device usage and configuration, and surrounding conditions. API does not include integration with your systems. Data charges may apply to view assets in the Track and Monitor portal. For use within Telstra's Cat-M1 (LTE-M) coverage areas on Telstra's IoT network. Check coverage at <https://www.telstra.com.au/business-enterprise/solutions/internet-of-things/iot-coverage>

 [Telstra.com/TrackandMonitor](https://www.telstra.com.au/TrackandMonitor)

Click 'GET IN TOUCH'



Telstra Track and Monitor Bluetooth Tracking Unit & Tag

Track non-critical assets cost effectively

Bluetooth trackers are useful for smaller / lower value assets which need semi-frequent tracking.



The Bluetooth Finding Community

Bluetooth tracking is supported in part by a crowd sourced community of users whose devices help locate items, as well as over 4,000 Telstra Air enabled payphones providing location updates when a tag is within range of the payphone.



Easy setup

Simply turn on your tracking unit / tag, record your asset details against the tracking unit / tag via the Track and Monitor Web (UI) application or mobile app then attach the device to your asset.

	Bluetooth® Tracking Unit	Bluetooth® Tracking Unit
	Minimum Order Quantity Of 20 for Bluetooth Unit	
		
Dimensions	Small 45 X 38 X 21mm	Extra Small 39 mm X 5.5mm
Ideal for	Tools, Equipment Freight pallets	Key sets (keyring) Bags or Small Valuables
Bluetooth Location Technology	Your unit / tag broadcasts its unique identifier at intervals, and its last known approximate location is tracked when in proximity to the Telstra Bluetooth Finding Community.	
Battery	Type: Non-Replaceable Battery Life: Up to 5 Years	Type: Replaceable Battery Life: Up to 12 months
Operating Temperature	For maximum battery life, mount the unit/tag away from hot or sunny conditions	
Certification	Rugged IP68, IK8	IP40
Minimum spend	\$980 Hardware (Upfront, based on \$49 per device x minimum quantity 20)	\$29 Hardware (Upfront, per device, No minimum quantity)
Monthly Service Fee per device (ex GST)	Service - \$1.50 p/mth	Service - \$1.50 p/mth

 [Telstra.com/TrackandMonitor](https://telstra.com/TrackandMonitor)

Click 'GET IN TOUCH'

Things you need to know

Battery life depends on device usage and configuration, and surrounding conditions.

The Bluetooth® mark and logo are registered trademarks owned by Bluetooth SIG Inc, and any use of such marks by Telstra Corporation Limited is under license. The existence, size and extent of the Telstra Bluetooth Community will vary from location to location, will not be the same at all times and will not be present in all locations.