

A complete system for tour operators, wholesalers & DMCs

Travel Studio has been developed alongside the changing market demands of tour operators worldwide. The software has been in the travel marketplace since 1999 and is designed for both business to business (B2B) and business to consumer (B2C) companies. Our clients continue to invest and adapt our software to meet their evolving requirements, ensuring the long-term growth and sustainability of their business.

Travel Studio provides the most comprehensive list of features in the industry and unrivalled customer benefits to match. If you would like to get more information about Travel Studio and how it can be adapted to fit your requirements, please contact our team at sales@opendestinations.com.

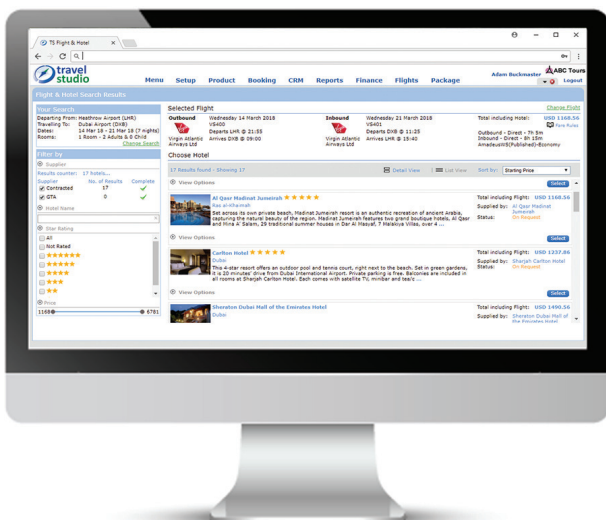
API Connectivity

Travel Studio provides both B2B and B2C access through an extensive web services XML API interface. Travel Studio has been successfully integrated into a wide range of reservations environments, creating thousands of online bookings per day for numerous brands.

The system has been designed to give you the flexibility to integrate with your own website design and content management system (CMS), supporting online searching, ground arrangements and flights, plus B2B and B2C customer portals.

Flight Integration

Open Destinations has integrated with a large number of third-party suppliers to give you a wide variety of content. We have a standard development tool kit and process, which enable us to integrate directly into any supplier of your choice.



Our integrations are covered by licence fees and, unlike many interface providers, there are no hidden transactional charges. This enables you to sell at the most competitive price and know your cost base up front.

Channel Managers

Open Destinations publishes an extensive Channel Manager API that gives you total transparency of all supplier activity, supporting BAR & net rates, pricing, availability and bi-directional support. Hoteliers have access to update both contracted and best available rates (BAR), enabling them to monitor booking confirmations and enquiries.

We have worked with our clients to integrate over 30 channel managers and have the capability to implement additional channel managers on request.

Supplier Extranet

Our supplier extranet is accessed by thousands of hotels around the world, providing them with the flexibility to update contracts directly into Travel Studio. The extranet also provides multi-language functionality and paperless billing, giving you total transparency of financial information relating to customer bookings.

All communications with hotel suppliers are instantly updated within Travel Studio, which guarantees that your sales agents, XML connections and websites have real-time access to pricing, allocations, special offers and hotel content.

Travel Studio: 10 Key Benefits

- Browser-based, scalable technology with flexible user configuration
- Multi-currency and multi-language functionality
- Strong supplier integrations for flights, hotels and transfers through GDS, channel managers and supplier extranet
- Comprehensive API for both B2B and B2C websites. Extensive APIs in place for both supplier and client integration, including a Supplier Extranet that is fully linked to the contract database
- Packages, FIT and group functionality that can be easily customised to suit all types of operators, both inbound and outbound
- Highly flexible hotel and contract database functionality
- System capability to handle the substantial volumes of transactions demanded by large tour operators and wholesalers
- Flexible system showcasing different prices for different customers, enabling multi-country selling
- Dynamic quote and booking functionality for groups, enabling you to generate and easily amend tour prices for multiple group sizes
- Automated tools to manage supplier payments and accruals

Flight Integration

Travel Studio links directly with Fare Studio, our flights module used for managing net fares, scheduled and charter allocations. Fare Studio provides seamless integration with all of the major GDS systems, as well as direct connections to a number of airlines and Multicom for low-cost carriers within Europe.



- Load and manage your complex negotiated fares, using functionality that is capable of loading hundreds of your own allocation in a matter of minutes
- Display blended search results of fares and availability for scheduled, charter, net, and low-cost fares
- Design and book packages, including scheduled or charter allocations
- Dynamically package accommodation and other services with ad-hoc, scheduled and low-cost flights
- Distribute fares and allocations to your B2B and B2C websites
- Preferred flight itineraries can be pre-loaded and automatically populated into packages at time of booking

Travel Studio: Features



SUPPLIER CONNECTIVITY

Dynamic price and availability through connection to wide variety of hotel, air, car, transfer and excursion providers.



PROCESS OUTSOURCING

Dedicated offshore teams to run back office processes including contract loading, fare auditing and supplier invoice processing.



E-COMMERCE & WEBSITES

Powering over 85 million searches per day across B2B and B2C websites and global API integrations.



NON-STOP SUPPORT

24/7 application support plus dedicated project teams to ensure business continuity.



MULTI-LINGUAL

Present product user interface, content, websites and the API in multiple languages.



MARKET-SPECIFIC PRICING

Create multiple tiers of pricing to distribute your product to different markets and channels.



YIELD MANAGEMENT

Make immediate price adjustments with our dynamic yield rules engine to flex your prices based on defined business conditions.



WORKFLOW AUTOMATION

Create multiple workflows based on channel, brand and destination, plus automation of messaging, QA and commercial processes.



CONTRACTING MODULE

Fully load your directly contracted products with complex rules, currencies, terms and conditions.



APPLICATION INTERFACES

Wide range of interfaces to connect to your other business applications, including SAP, Oracle, Salesforce and Microsoft Dynamics.



ON-PREMISE, HOSTED OR CLOUD-BASED

Flexible options to host the system on-site, co-locate or through all major cloud providers.



CHANNEL MANAGER API & EXTRANET

Supporting bi-directional integration and fully interfaced with Contracting Module. Used by thousands of hotels worldwide.

Working for your travel business

