

Crayon Cloud by Design



"Get to the cloud one workload at a time"

WHAT IS CRAYON CLOUD BY DESIGN?

Crayon understands that sometimes a holistic move to the cloud is not the best option for a company. Thus, Crayon Cloud by Design offers clients the option to choose which workloads to move to the cloud. This offering gives insight into the ins and outs of decisions made while transitioning systems to the public cloud. Crayon Cloud Architects provide guidance through the architectural best practices needed for designing and operating reliable, secure, efficient, and cost-effective systems in the cloud.

Crayon Cloud by Design provides a way to consistently measure performance against best practices in the cloud and identify areas for improvement.

WHAT IS A WORKLOAD?

The concept of a workload is used to identify a set of components that, together, deliver business value. In other words, a workload is any system or combination of systems that is using a similar underlying operating system and resources. (i.e. SQL workload, Oracle workload, CRM workload etc.)

Any line of business application or any segment of the IT infrastructure landscape can be a workload.

PROCESS OVERVIEW



1
Client Chooses
Workloads to
Consider



2
Crayon Conducts
Cloud by Design
Workshop



3
Crayon Delivers
Proof of
Concept



4
Crayon Executes
Full
Migration

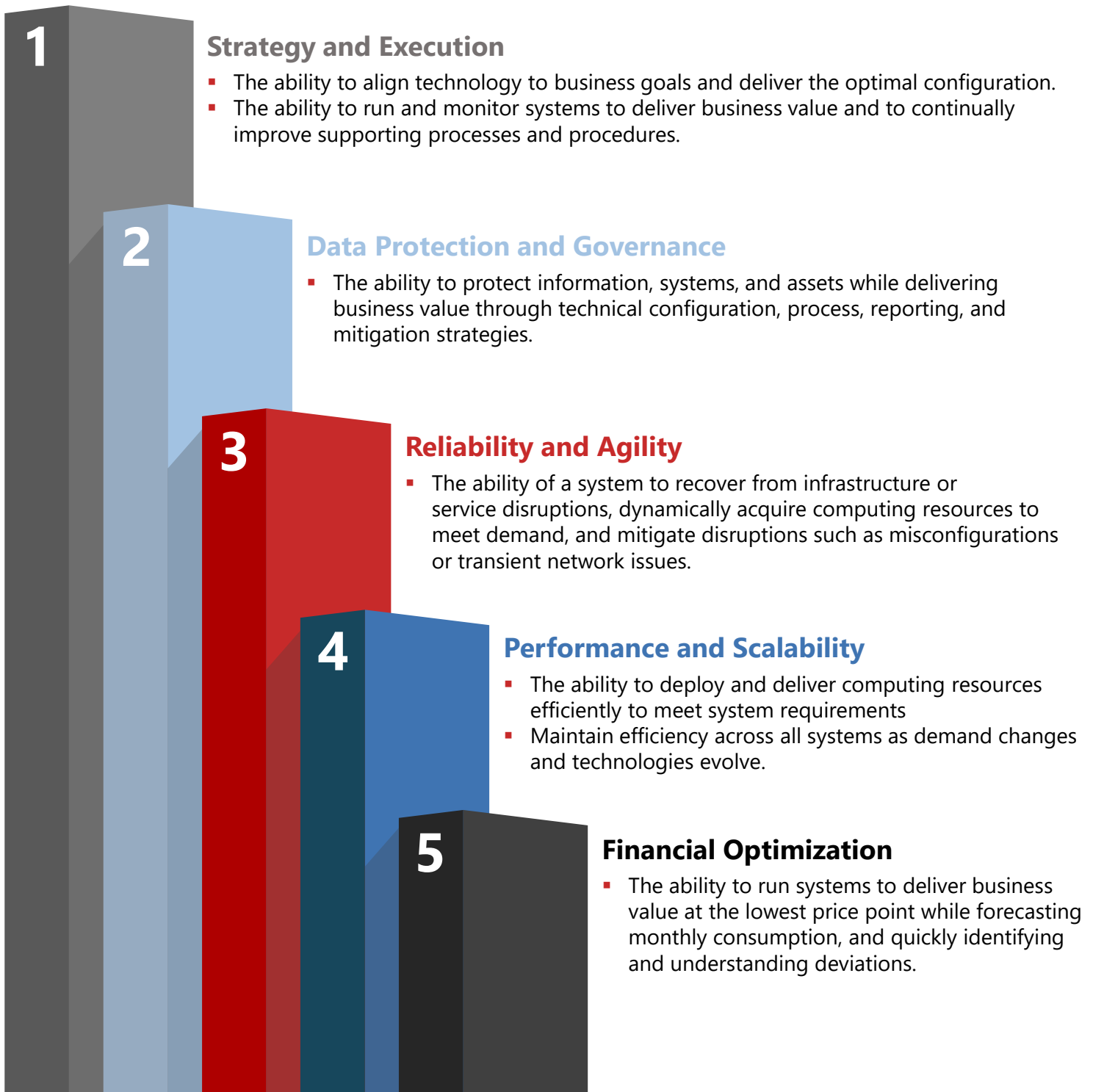


5
Crayon Enables
Optimization and
Innovation

THE FIVE PILLARS

After choosing the Workloads to be assessed, Crayon will look at five areas of interest, better known as the Five Pillars or Crayon Cloud by Design.

When assessing a technology ecosystem, Crayon Cloud Architects will look at strategy and execution, data protection and governance, reliability and agility, performance and scalability, and financial optimization. After the analysis is complete Crayon will provide a **maturity rating** for each pillar, a **set of recommendations** to increase that rating, and a **proof of concept (POC)** to ensue viability in the cloud.



ROADMAP

Crayon uses the following process to consistently measure clients' architecture against best practices in the cloud and to identify areas for improvement. By the end of the process, the workloads chosen for migration to the cloud will be fully optimized and developed, thus allowing customers to focus on core business strategy, knowing that data and assets are secured.

