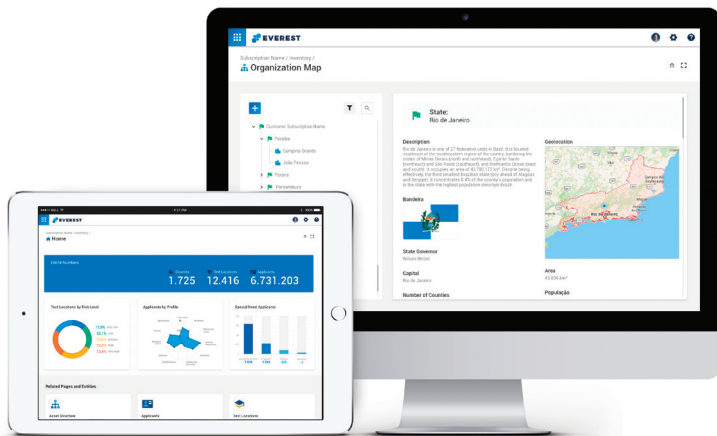


# Inventory

## APP COLLECTION

Shape the structure of your organization with **Inventory**: an app collection that empowers you to easily customize and manage assets and their attributes through a tree view and lists.



## Agile management

Manage the assets relevant to your organization seamlessly, which can be anything that has value to your business and that you want to monitor. Assets can be grouped into boxes and organized in a hierarchical structure (tree) that expands the possibilities offered in traditional lists and makes management easier.

## In the cloud

**Inventory** grows with your organization. Its cloud-running microservice architecture (Microsoft Azure) ensures scalability so you can create and manage as many assets as you want without having to be limited by storage capacity.

## Attributes

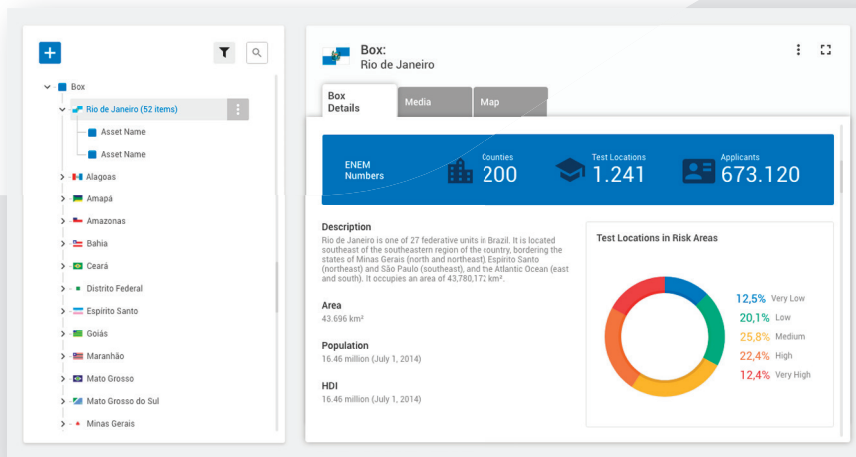
The various types of attributes available allow you to detail asset information in the most appropriate format (Date/Time, Email, Georeference, Text, Image, Link, Picklist, Number, Relationship, Boolean, etc.). You can set the maximum and minimum number of text field characters, decide whether a field should be required, create formatted fields for links, emails, date and time, picklists, and more.



## Apps

Counting tools, charts, video players, maps, and lists of links are some of the features of the many apps available to support you in asset management. Apps extend feature offerings and allow you to customize **Inventory** according to your needs.

- Create and maintain assets via API and interface, with each registered asset automatically getting a REST API endpoint.
- Customize the terms and instructions of the asset registration form, including titles, help texts, and field tips.
- Assets and their data are highly available. The app collection supports high data volume due to storage in Azure Cosmos DB (NoSQL) managed by the **Entity Foundation** service of the Everest Platform.
- Structure your organization in Treeview, with support for hierarchies (assets with common characteristics grouped into boxes) and relationships (Parent-Child), as well as horizontal relationships (Related) in lists.
- View and edit assets through lists using the main operations that are available on the Treeview.
- Support for multiple languages.
- View georeferenced asset items individually in the map app. If the **Integration Map** app collection is installed, assets with coordinates can be viewed together on the same map.
- Analyze asset information with the support of customizable pie, donut, radar, and bar charts.
- Select the attributes to be analyzed, the color palette and the subtitles.
- Centralize access to your favorite **Inventory** pages in a list of links for easy navigation.
- Easily identify assets with specific icons for each asset type.



## Item counting

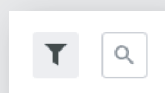
Counting tools display the number of assets, such as the number of assets registered under a box (in the adjacent image the "Rio de Janeiro" box contains 52 asset items) and the number of assets registered under an asset type (such as Counties in the image).

## Information in one place

View assets through a hierarchical view and the details of each item next to it, such as its name, description and other relevant information.

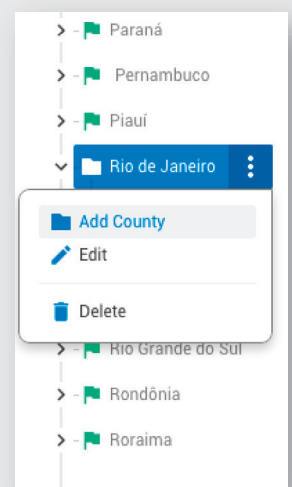
## Filter and search

Assets can be filtered by their attributes and easily located.



## Treeview management

The major asset management operations can be performed directly from Treeview. Alternatively, assets may be edited through lists.



Developed by **Modulo Security LLC**.

For more information, please contact [produto@modulo.com](mailto:produto@modulo.com)

