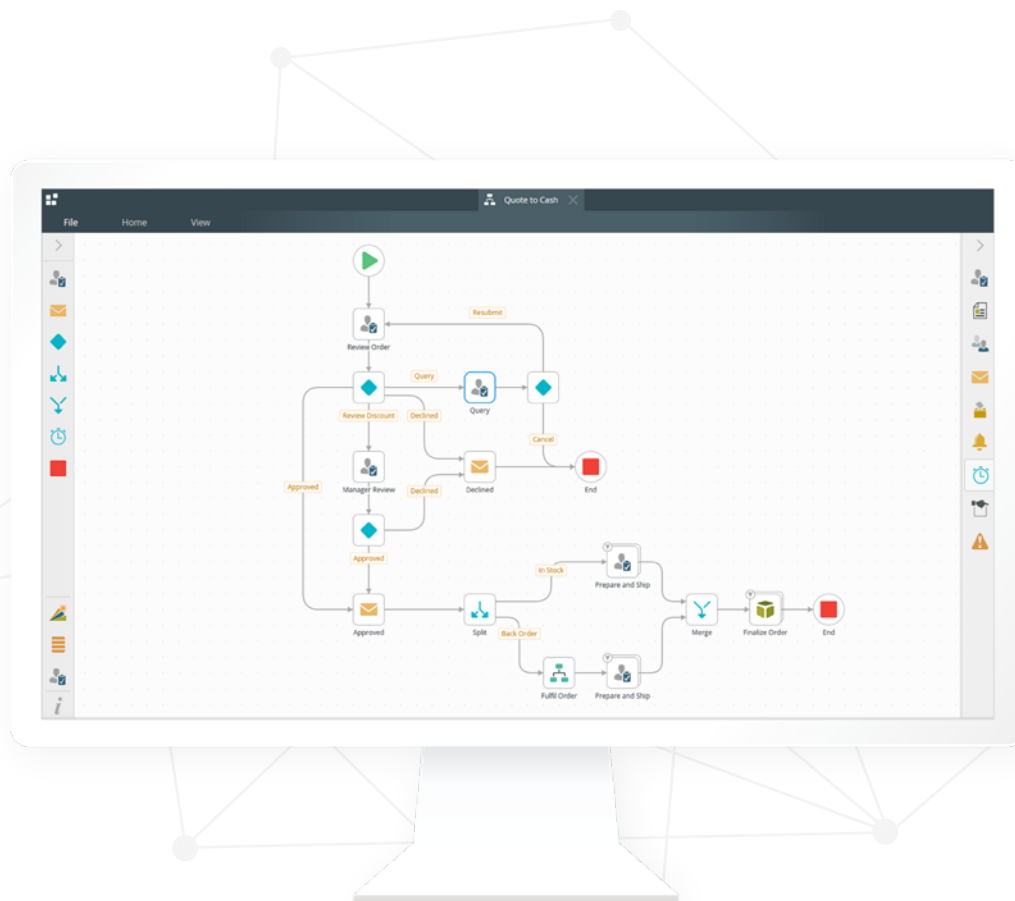


Apps That Deliver

Simplify complex workflows to drive your business forward.



USE K2 TO:

Build

Build and deploy your apps faster.

Empower

Empower your people & maximize resources.

Control

Take control of your process & workflows.

Create Powerful Process Applications to Automate Workflows and Transform Your Business with K2

K2's low-code development platform for digital process automation gives you everything you need to build powerful process applications focused on efficiently moving tasks and information between systems and humans. Typically comprising of workflow, forms, system and application integration, and reports, K2-built processes are comprehensive applications that transform your business and ensure work is done effectively. K2 makes it possible for your business to become more responsive to customer and employee needs by streamlining application development time, in turn reducing costs and improving your business's bottom line.



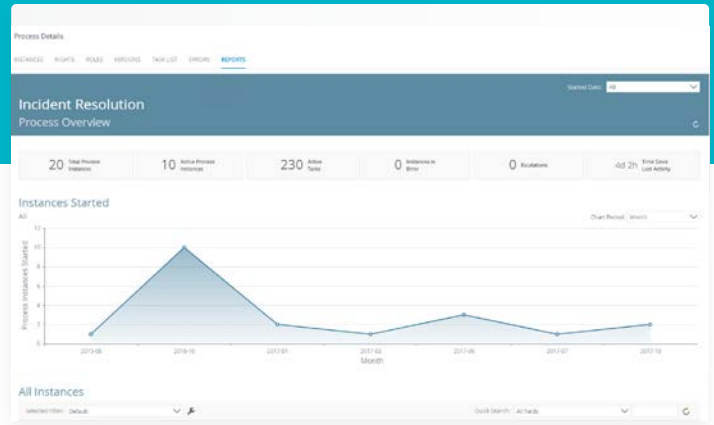
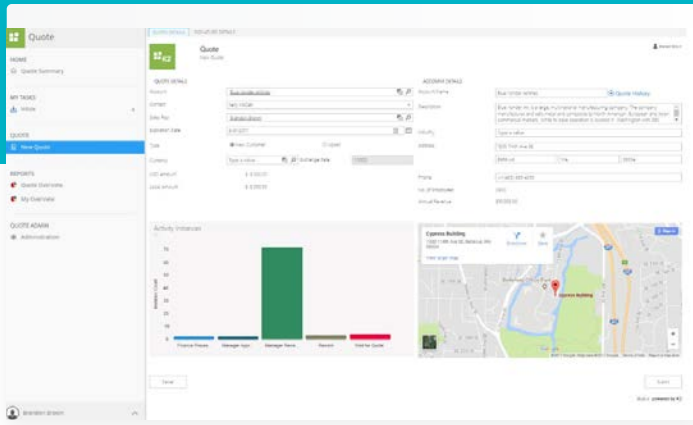
Automate workflows, whether simple or complex, using a drag-and-drop designer that doesn't require writing lines of code. Our engine makes scaling workflows across departments more efficient, so you can accelerate your digital transformation.

- ✓ **Visual Design** – Our browser-based designer makes it easy to design a workflow and add business logic to make it work the way you need it to without code.
- ✓ **Logic and Conditions** – With K2, you can add business logic and conditions to your processes. Start a workflow based on a specific condition or add business logic to dynamically route work to different people based on rules.
- ✓ **Connect to LOB Systems** – Quickly integrate your workflows with your existing line-of-business (LOB) systems. Use LOB data in workflow logic or modify data as part of a step in your workflow.
- ✓ **Document Management** – Integrate with best-of-breed applications like SharePoint and DocuSign to handle the creation, approval and storage of documents.
- ✓ **Built-In Auditing** – K2's built in audit tools provide real-time status updates for every step in your workflow. Keep track of who is working on what and what decisions have been made.



K2's patented integration technology, SmartObjects, makes connecting to virtually any of your existing line-of-business systems quick and reusable, so you can consume and surface that data directly in your K2 applications.

- ✓ **Connect Without Code** – Integrate with common enterprise systems and applications including DocuSign, Microsoft Dynamics CRM, Salesforce, SAP, SharePoint and more using a visual interface to configure the connections.
- ✓ **Always Secure** – K2 supports standard authentication mechanisms like OAuth and uses your systems' native security settings, so you can rest assured your data is only being accessed by the people who should see it.
- ✓ **Real-Time Connections** – K2 never caches your data, which means you and your end-users will always have access to the most up-to-date information in your systems.
- ✓ **Build Once, Reuse Everywhere** – SmartObjects are reusable across all your applications, so once you configure the connection to your data, you can reuse it across all your process apps.



Forms

Using K2's SmartForms, you can create and connect forms to your workflows and line-of-business data to design a powerful user experience. Build SmartForms using a visual designer that allows you to create once, then reuse across your applications.

- ✔ **Browser-Based Design** – A low-code design environment allows you to quickly build interfaces that can capture or display information within your process applications.
- ✔ **Connect to LOB Systems** – K2 SmartObjects make it easy to display or modify data in your line-of-business systems directly from your forms.
- ✔ **Rules and Validation** – K2's inline functions give you the flexibility to build forms with complex logic or data validation.
- ✔ **Reuse Across Multiple Applications** – Build a SmartForm once and use it across one or more K2 applications. If you make changes to a form, all your applications will immediately update with the newest version.
- ✔ **Available Across Devices** – K2's responsive form themes make it possible to access them on any device, even if you're offline.



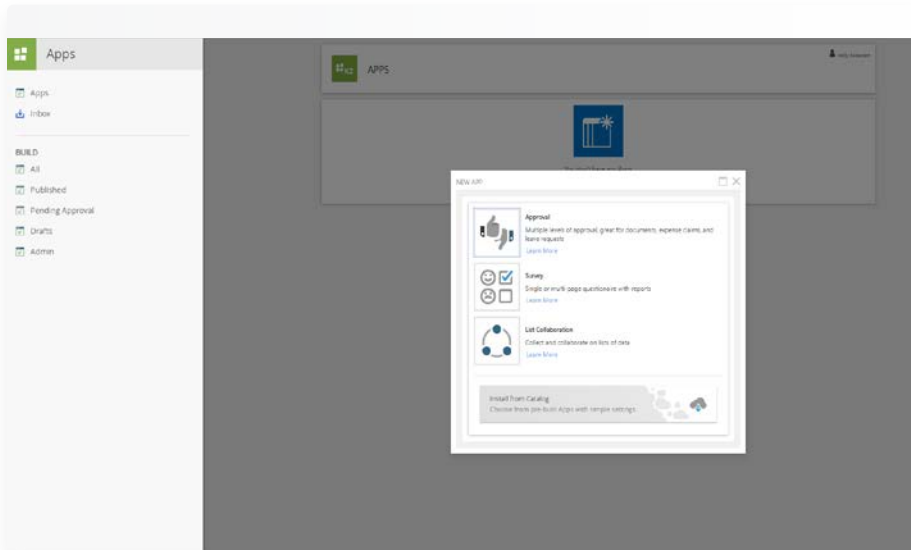
Analytics

Use K2's reporting and analytics tools to get real-time insight into application usage and engagement, so you can quickly identify bottlenecks and optimize your processes. These metrics are crucial to making your teams and your business as efficient as possible.

- ✔ **Out-of-the-Box Process Metrics** – K2 provides standard process metrics reports, so you can keep track of things like how many workflows are running, how long it's taking each workflow to complete and more.
- ✔ **Real-Time Status** – K2's View Flow report gives process administrators and end-users a real-time view into the status of each workflow.
- ✔ **Custom Reports** – With K2's form designer and reporting controls, you can build customized reports that bring together process metrics and line-of-business data into a single dashboard.
- ✔ **Third-Party Integration** – Integrate with best-of-breed reporting platforms like Microsoft Power BI to create rich data visualizations for your K2 applications.

Implement Process Apps Quickly While Maintaining Control

K2's industry-leading low-code development platform allows your IT teams to build and deploy customized and flexible process apps faster while enabling business users with little technical experience to automate their own workflows in a low-code setting. What's more, K2's environment allows IT teams to improve visibility, security and control from one location.



- ✔ **Get Started Quickly**
K2 provides a three-step app creation wizard and pre-built templates, called SmartStarters, so you can implement out-of-the-box process apps quickly.
- ✔ **Authorization and Access Control**
Role-based access controls allow you to manage who can view and modify data, get tasks assigned to them, build applications and more.
- ✔ **Deployment Tools**
K2 provides visual tools to package your applications and deploy them to other K2 environments, allowing you to follow standard development and testing practices or scale across your entire organization.
- ✔ **Data Security and Reliability**
K2 uses standard encryption technology, like SSL, to keep data secure, while disaster recovery options ensure your applications will always be available when you need them.
- ✔ **Security and Certifications**
The K2 platform is certified for ISO 27001, SOC 2 Type II and G-Cloud; complies with OWASP 10 building standards; and conducts regular analysis and penetration testing via an independent agency.



TRY K2 for free at [K2.COM](https://www.k2.com).

CONTACT US at [844.4K2.APPS](tel:844.4K2.APPS) or SALES@K2.COM.

© 2008-2019 SourceCode Technology Holdings, Inc. All rights reserved. SourceCode software products are protected by one or more U.S. patents. Other patents pending. SourceCode, K2, the four squares logo, K2 Five, K2 Cloud, K2 Blackpearl, K2 SmartForms and AppIt are registered trademarks or trademarks of SourceCode Technology Holdings, Inc. in the United States and/or other countries. The names of actual companies and products mentioned herein may be the trademarks of their respective owners.