

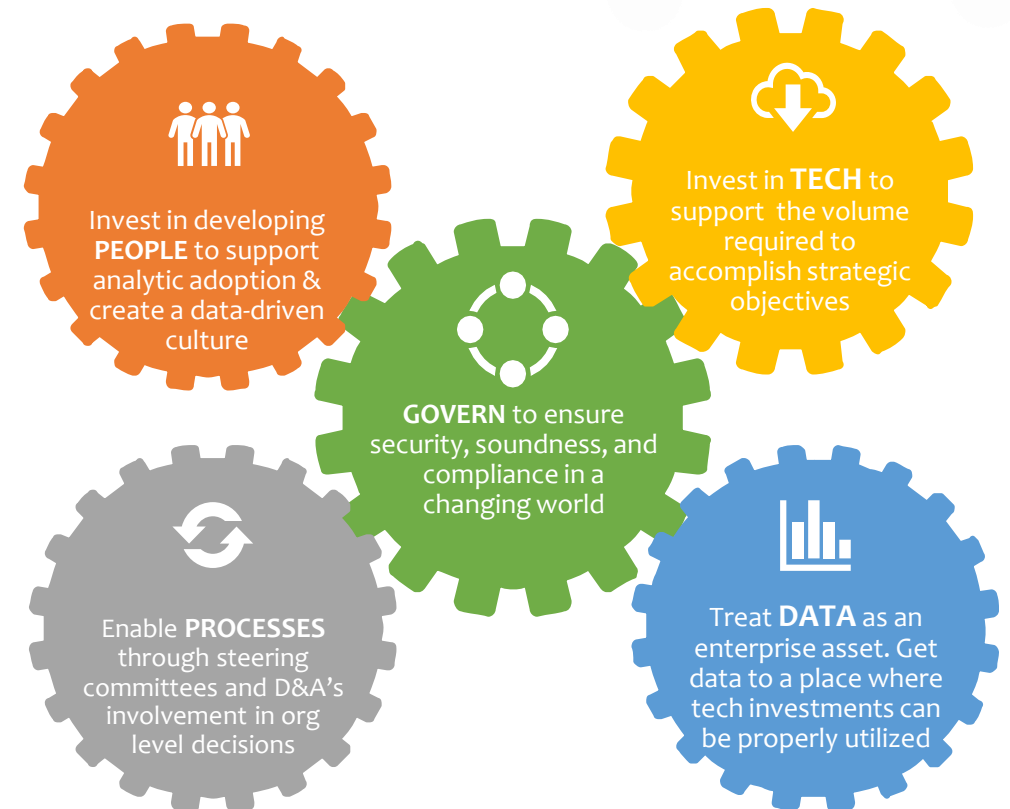
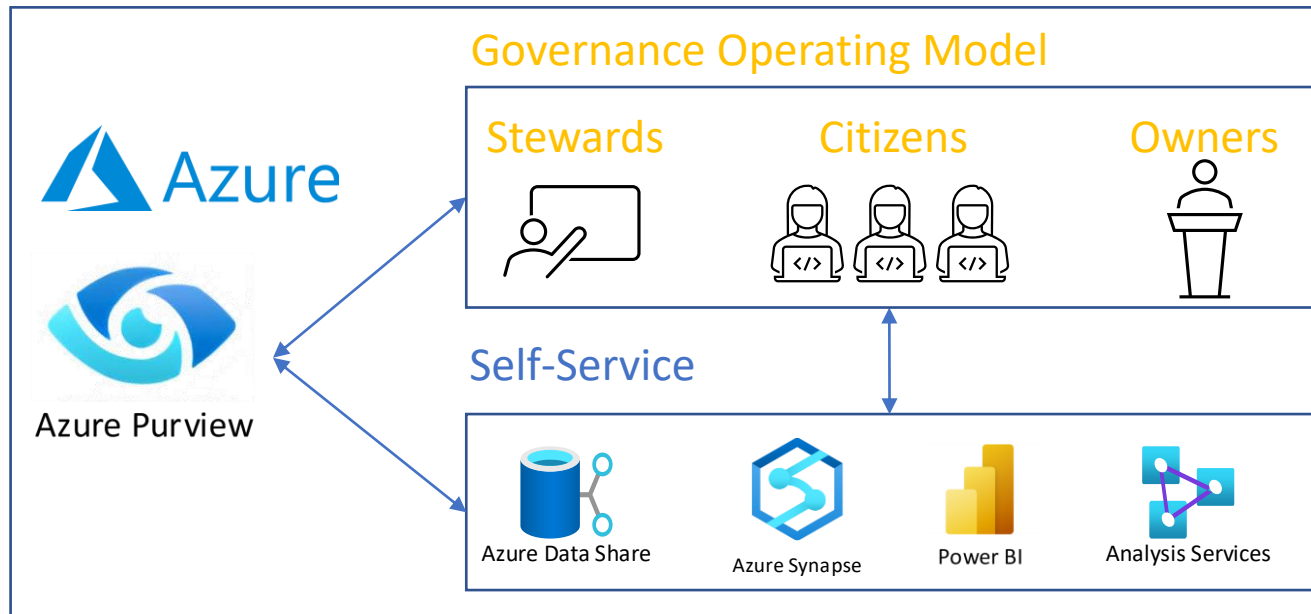
## RapidDG - Data Governance Program

# Why Data Governance?

# Organize People & Process to Optimize Tech & Data

“RapidDG creates the *vision*, builds the *roadmap*, designs the *operating model*, and catalyzes your *DG Program* to get the most out of your technology & data.”

## CCGDG



# Common DG Challenges & Themes



I don't trust my data  
(Data Quality)

Data architecture is the wild,  
wild west  
(Information Architecture)

There is no single way to  
request data/reports  
(Information Architecture)

I don't know how my metrics  
are defined  
(Metadata Management)

I can't tell you what source  
system the data came from  
(Metadata Management)

I don't know who has access to  
the data  
(Information Architecture)

I don't know who is responsible  
for the data  
(Program Management)

We don't classify or manage  
sensitive data  
(Information Architecture)

I'm not sure what policies and  
procedures exist for approving  
access or if they're up-to-date  
(Data Privacy)

I'm responsible for  
implementing GDPR or CCPA  
and I have no idea where to  
start  
(Data Privacy)

*Are any of these your challenges?*

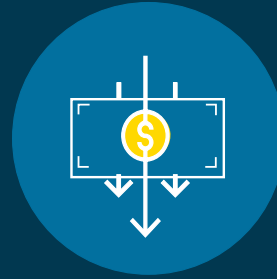


# Business Drivers for Data Governance



## Increase Revenue

- **Improve profitability** with better analytics for improved decision making
- **Increase opportunity** through availability of information for business insights and competitive advantage



## Reduce Cost

- **Create standardized and high-quality information** through operational efficiencies
- **Lower IT costs** by mitigating duplicate work effort or re-work



## Minimize Risk

- **Reduce regulatory compliance risk** and improve confidence in operational and management decisions
- **Improve reporting to regulators and authorities** through defined data processes and data management

# Data Governance Overview

# Data Governance Defined

## What is Data Governance?

The exercise of authority, control and shared decision making (planning, monitoring and enforcement) over the management of **data** assets. - [DAMA](#)

Data Governance is a collection of practices and processes which help to ensure the formal management of data assets within an organization - [DATAVERSITY](#)

**Data governance** is the specification of decision rights and an accountability framework to ensure the appropriate behavior in the valuation, creation, consumption and control of **data** and analytics. - [Gartner](#)

Data Governance is the **organizational approach** to data and information management, formalized as policies and procedures that encompass the **full lifecycle of data**, including acquisition, development, use, and disposal. - [CCG](#)

# Levels of Data Governance



Passive

- There are **some aspects of DG employed** within the organization, **but there are no enterprise standards in place** (e.g. the IS team has developed a data dictionary)



Reactive

- The enterprise is **responding to a specific issue or problem** (e.g. data breach or audit).
- The enterprise is **facing a major change or there is a potential regulatory threat** to the organization (e.g. GDPR, acquisitions, or preparing for a public offering)



Proactive

- The enterprise **recognizes the value of data** and has decided to **treat data as a corporate asset** (e.g. recruitment of a CDO, budgeted DG program, etc.)

# CCG Overview

# CCG At A Glance



## DATA



## ANALYTICS



## SOLUTIONS

We are a team of strategists, technologists and business experts helping forward-thinking organizations transform into intelligent enterprises guided by analytics and insights. We empower optimized, real-time data driven decisions and make data and analytics adoption pervasive so you can respond quickly and intelligently to both crisis and opportunity alike.



**Years of  
continued  
growth**

### ***What we do***

CCG helps organizations become more **insights-driven**, **solve complex challenges** and **accelerate growth** through industry-specific data and analytics solutions.



**CUSTOMER INTELLIGENCE**



**ANALYTICS STRATEGY**



**DATA GOVERNANCE**



**CLOUD MODERNIZATION**

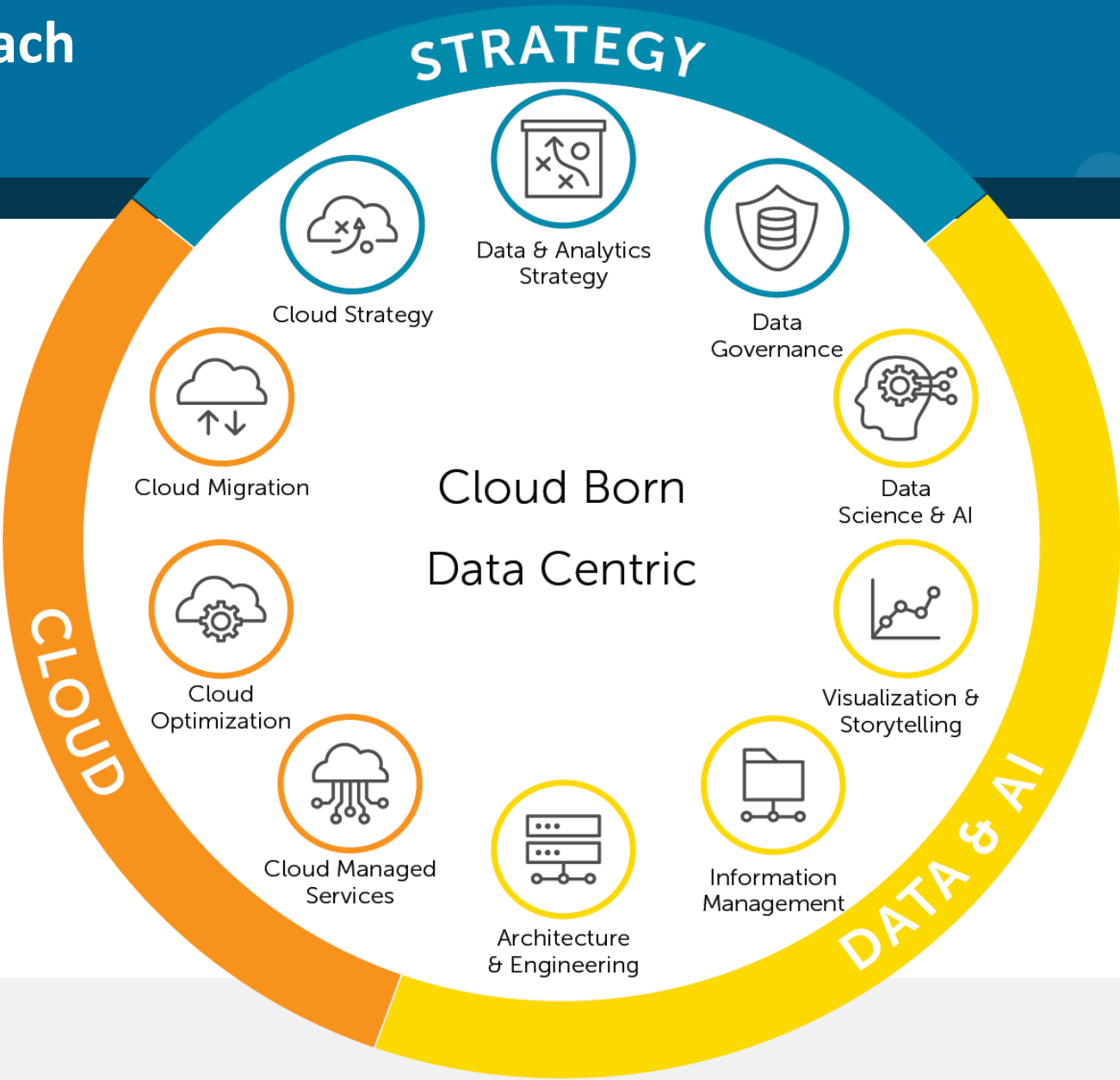


**ACCELERATORS**



**INDUSTRIES**

# CCG's Data-Led Approach



# CCG Solutions and Services



## Strategy & Management

- Rapid Data Governance Solution
- Rapid Analytics Roadmap Solution

### Services

- Health Assessments
- Strategic Roadmaps
- Master Data Management
- Metadata Management
- Data Governance



## Information Management

- Platform Modernization Solution
- Cloud Migration Solution

### Services

- Data Integration
- Data Architecture
- Data Warehouses and Lakes
- PowerApps
- Cloud Management
- Cloud Migration
- DR/BC through Azure
- Azure Governance/Security



## Analytics

- Leadership Development
- Customer Analytics

### Services

- Dashboards and Visualizations
- Operational Reporting
- Self-Service
- Training
- Data Exploration
- Location Intelligence (GIS)



## Data Science and AI

- RapidInsight with Machine Learning Prototype Solution

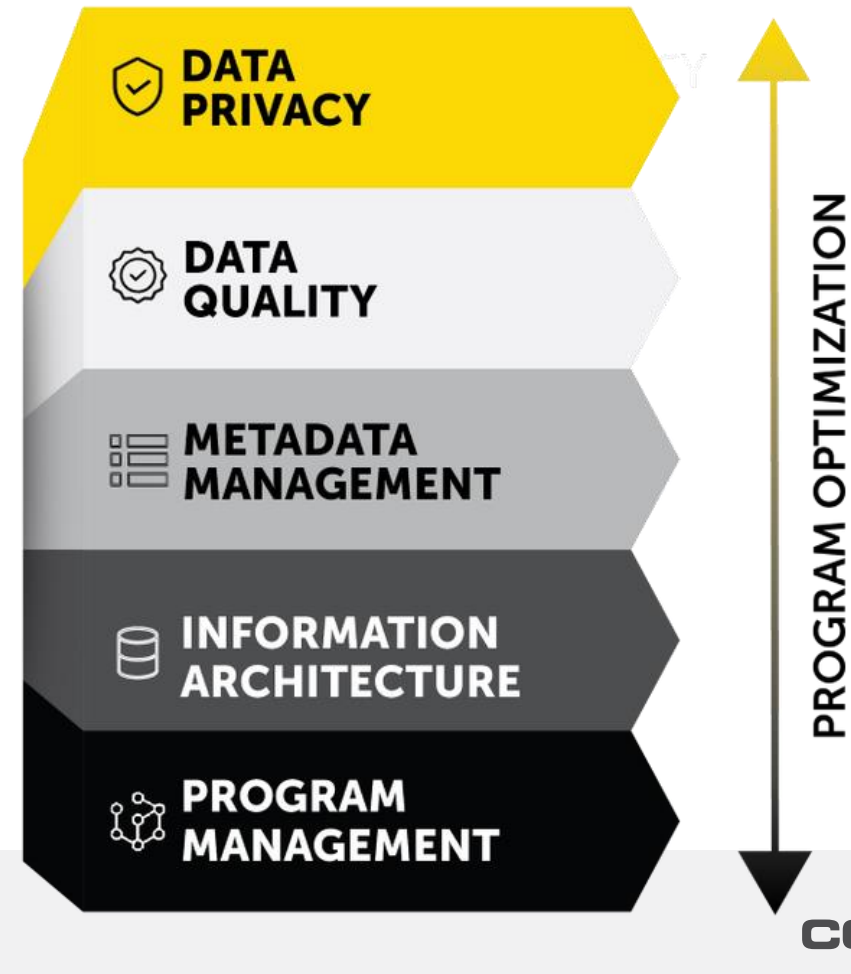
### Services

- Model as a Service
- Data Science as a Service
- Predictive Analytics
- Natural Language Processing
- Machine Learning
- Artificial Intelligence
- Machine Learning Ops

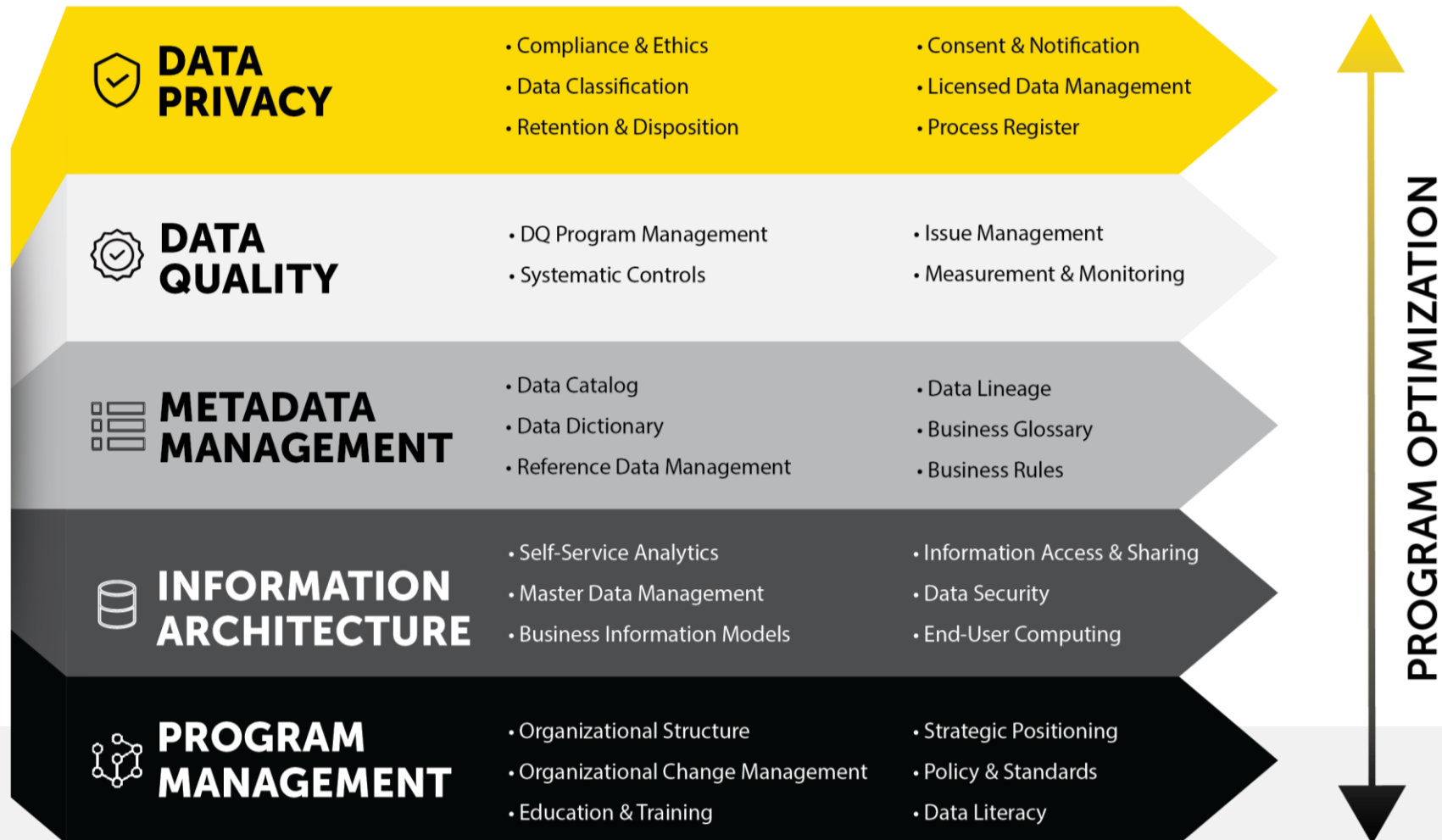
# Our Data Governance Approach

# CCGDG Methodology

- CCG believes that there is no "single" way to organize Data Governance.
- “All models are wrong, but some are useful”  
- George Box
- We needed to assess faster, deriving actionable insights that could be quickly implemented with minimal disruption.
- To achieve this, we developed a simplified, more targeted framework and methodology.



# CCGDG Methodology & Framework



**RapidDG**

- 6-8 Week Engagement
- Program Assessment & Recommendations
- Executive Read-out
- Actionable Roadmap
- Operating Model Jumpstart
- 6-month Post-assessment Refresh



RapidDG is an accelerated engagement focused on the specific needs of your business while yielding powerful results.

# Engagement Timeline

| Week 0*  | Week 1  | Week 2   | Week 3  | Week 4  | Week 5   | Week 6   | Week 7   |
|--|---|--|---|---|--|--|--|
| Preparation  | Kickoff   | Discovery  | Analysis  |   | Recommend  | Operating Model  | Final Readout  |
| <ul style="list-style-type: none"> <li>Sponsor kickoff</li> <li>Schedule Discovery Sessions</li> <li>Request DG documentation</li> </ul> | <ul style="list-style-type: none"> <li>Company kickoff</li> <li>Conduct initial Discovery Sessions</li> <li>Review provided documentation</li> <li>Begin drafting deliverables</li> </ul> | <ul style="list-style-type: none"> <li>Continued initial Discovery Sessions</li> <li>Focus time on deliverable creation</li> <li>Review new documentation as provided</li> </ul> | <ul style="list-style-type: none"> <li>Meet with additional stakeholders, rounding out perspective</li> <li>Facilitate deliverable-driven interviews</li> </ul> | <ul style="list-style-type: none"> <li>Define interim operating model</li> <li>Narrow to actionable recommendation</li> </ul> | <ul style="list-style-type: none"> <li>Finalize interim operating model</li> <li>Finalize actionable recommendation</li> </ul> | <ul style="list-style-type: none"> <li>Review and approve operating model</li> <li>Kick off operating model</li> </ul> | <ul style="list-style-type: none"> <li>Conduct Final Read-out</li> </ul> |
| Follow Up With Stakeholders  |   |  |   |   |  |  |  |

\* Week 0 Preparation can begin prior to actual kickoff in Week 1 as soon as the client is ready.

# RapidDG Services

| Service                   | Scope   | Deliverables   |
|---------------------------|---|--|
| Planning and Kickoff      | <ul style="list-style-type: none"> <li>• Scheduling discovery sessions</li> <li>• Documentation request</li> <li>• Project kickoff(s)</li> </ul>  | <ul style="list-style-type: none"> <li>• Project Kickoff Deck</li> <li>• Weekly Status Reports</li> </ul>  |
| Discovery                 | <ul style="list-style-type: none"> <li>• Discovery Sessions <ul style="list-style-type: none"> <li>○ Maturity Assessment &amp; Analysis</li> <li>○ Document results &amp; compile notes</li> </ul> </li> <li>• Inventory of documentation collected/reviewed</li> </ul> |  |
| Program Development       | <ul style="list-style-type: none"> <li>• DG Program &amp; Operating Model are established</li> <li>• Charter established with roles and responsibilities defined</li> </ul>   | <ul style="list-style-type: none"> <li>• Initial Operating Model (OM) Defined</li> <li>• OM Kickoff Meeting &amp; Deck</li> <li>• OM Charter</li> <li>• OM Role Descriptions</li> <li>• OM Agenda</li> </ul> |
| Roadmap                   | <ul style="list-style-type: none"> <li>• Identify, prioritize, and document DG program activities to be conducted in the following year</li> </ul>  | <ul style="list-style-type: none"> <li>• 24 Month Roadmap <ul style="list-style-type: none"> <li>○ First Year Monthly</li> <li>○ Second Year Quarterly</li> </ul> </li> </ul>                                |
| Executive Summary Readout | <ul style="list-style-type: none"> <li>• Final read-out to key stakeholders</li> </ul>  | <ul style="list-style-type: none"> <li>• Final Readout Deck Containing Maturity Assessment &amp; Recommendations</li> </ul>  |
| RapidDG Progress Review   | <ul style="list-style-type: none"> <li>• Evaluate concurrent state of Data Governance Program</li> </ul>  | <ul style="list-style-type: none"> <li>• 6 Month Revision Recommendations</li> </ul>   |

# CCG's Other Data Governance Offerings

Rapid**DG**, DG Enablement, & Implementations

# Data Governance Solutions

Data Governance is a journey, and CCG offers a range of solutions to meet you where you are. From accelerating your DG Program launch to leading your DG initiatives, we have the expertise to guide you at every step.



## RapidDG Accelerator

Gain insight into your organizations need for data governance and what you can do to improve your success using this lightweight framework that delivers an actionable roadmap to guide your next 2 years of data governance.

The logo for CCGDG, featuring the letters 'CCGDG' in white and yellow on a blue circular background.

## DG Enablement

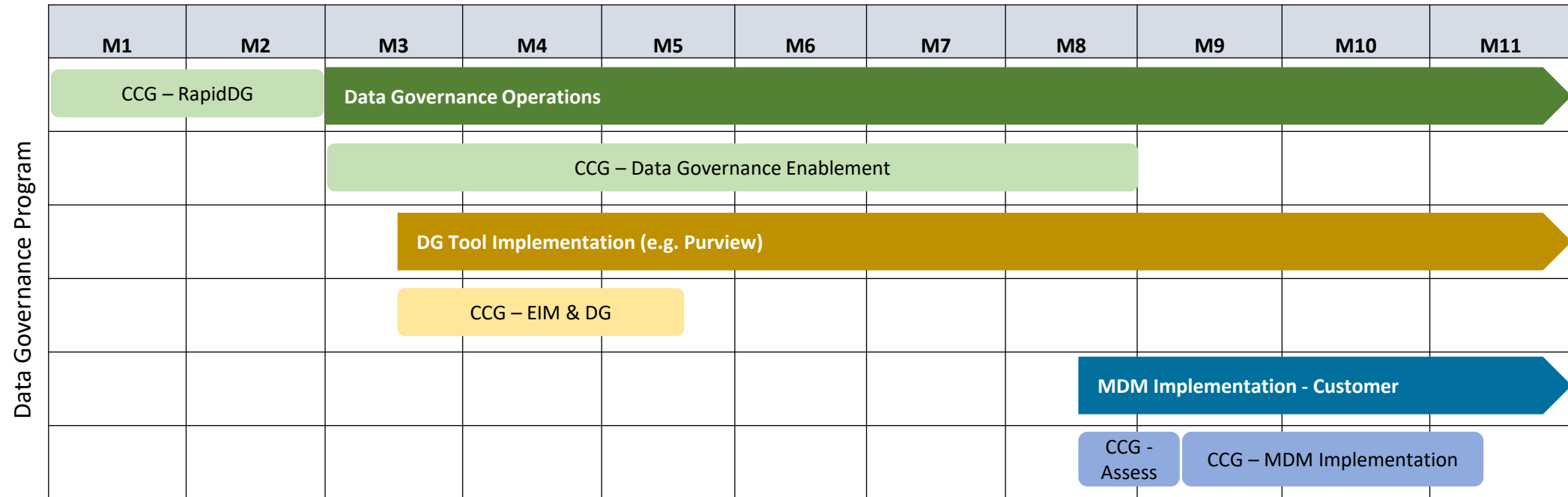
- DG Roadmap Oversight & Execution
- DG Operating Model Completion
- Business Case Development
- Communication Planning
- Corporate Training & Education
- Policy Assessment & Gap Analysis
- Workflow Design & Implementation
- Resource Planning



## DG Implementations

- Metadata Mgmt. (e.g. Purview)
- Master Data Mgmt. (e.g. Profisee)
- BI Governance (e.g. Power BI)
- Data Quality Program
- Model Governance
- Privacy Assessment
- Tool Selection & Implementation
- Data Warehouse Health Assessment

# Data Governance Journey (Example)

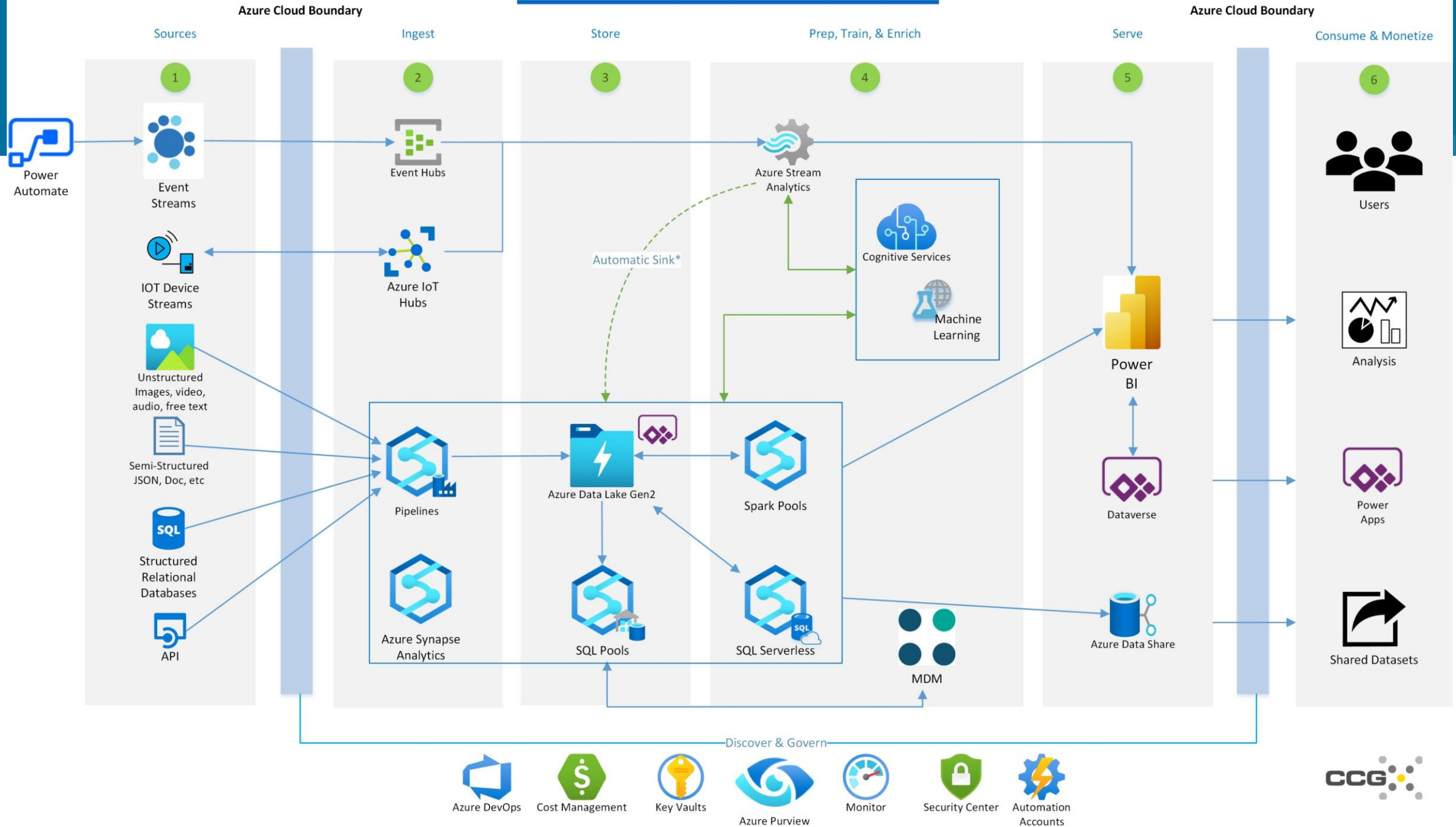


Permanent DG Program

CCG Engagement

# CCG Reference Architecture

# CCG Reference Architecture



# CCG Reference Architecture

