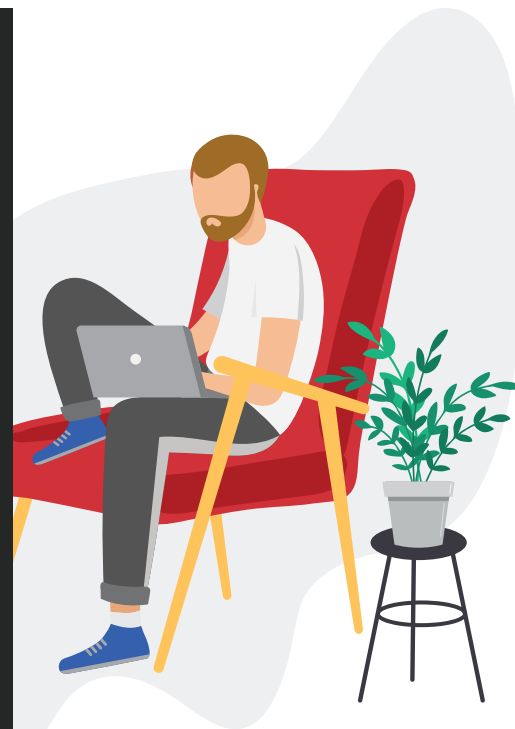


# WINDOWS VIRTUAL DESKTOP (WVD) JUMP START



Many organizations have a requirement to provide a remote working solution for their teams who are now working from home. The WVD Jump Start is designed to provide rapid establishment of a virtual desktop environment to ensure rich applications can be easily accessed by remote workers. Working with your chosen partner we can enable a WVD deployment in days.

Windows Virtual Desktop is a comprehensive desktop and app virtualization service running in the cloud. WVD Jump Start provides a scalable Virtual Desktop Infrastructure (VDI) delivering simplified management, multi-session Windows 10, optimizations for Office 365 ProPlus, and support for Remote Desktop Services (RDS) environments all deployed within days.



## WVD CUSTOMER PROFILE

Organizations needing to rapidly deliver a secure, reliable and scalable remote desktop solution whilst ensuring a consistent and reliable desktop experience. Typical applicable scenarios:

- No current VDI solution for remote access
- Little to no burst capacity for existing VDI solution (provides the ability to expand beyond an existing VDI solution)
- Core dependency on Windows 7 (only supported solution)
- Customers looking at Disaster Recovery (DR) scenarios for desktops and data

## WHAT ARE THE REQUIREMENTS FOR WVD?

To take advantage of the Jump Start for WVD we need to ensure you have the following:

- WVD license entitlements
  - » Microsoft 365 E3, E5, A3, A5, F1, Business
  - » Windows E3, E5, A3, A5
  - » Windows 10 Enterprise Subscription
- Azure subscription
- Existing Azure AD Connect deployment
- Customers with no Azure subscription can create a PAYG subscription (useful for disaster recovery, bursting and/or limited use)

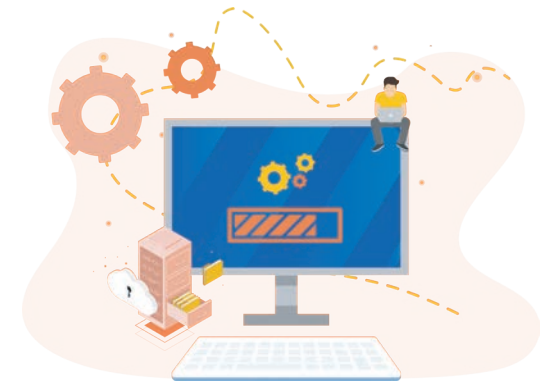
## WINDOWS VIRTUAL DESKTOP (WVD) JUMP START

This offering is specific to WVD to ensure the balance between full virtual desktops and rich applications is catered for. We call this, Jump Start for WVD and the service includes:

- **Design thinking workshop including:**
  - » Solution design overview – creating the building blocks for success
  - » Overview of WVD components including Azure environment, virtual networks, Azure AD Domain Services, storage, VM update management etc.
  - » Overview of the provisioning process
  - » Overview of solution scaling (Bursting to more desktops or applications)
  - » Understanding or defining user personas to align to desktop and applications requirements
  - » Process for Azure cost management and reporting
  - » Explore support requirements
  - » Discuss sizing in Azure and the importance of right-sizing – breadth first or depth first scaling
  - » Overview of optional value add services
  - » Moving to next steps beyond POC –recommendations and open discussion
- **WVD Jump Start Deployment**
  - » Stand up a self-contained Azure environment or utilize existing Azure environment (virtual network, Azure AD Domain Services or AD in Azure, storage, VM update management, inventory) in a single region
  - » Publish/configure one (1) WVD host pool - Windows 10 multi-session - pooled desktop and up to two (2) RemoteApp applications including one (1) customer provided/installed application
  - » Configure the Choice Solutions Optimized O365 WVD Experience

### » The Image will include:

- » Windows 10 Enterprise
- » Microsoft Visual C++ Redistributables / .NET Framework
- » Microsoft FSLogix Agent (FSLogix Containers)
- » Microsoft Edge
- » Microsoft Office 365 ProPlus
- » Microsoft Teams
- » Microsoft OneDrive
- » Adobe Acrobat Reader DC
- » Delivery of two (2) client provided compatible pre-packaged applications



If you are looking to get WVD configured and would like to take advantage of our WVD Jump Start Service, contact [sales@choicesolutions.com](mailto:sales@choicesolutions.com).