

clearTREND® - Never Miss a Turn

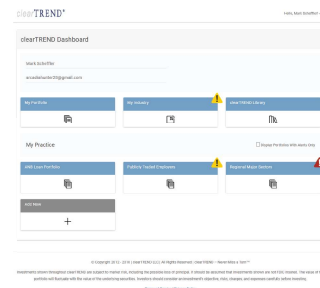
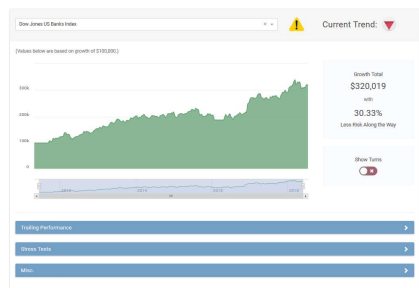
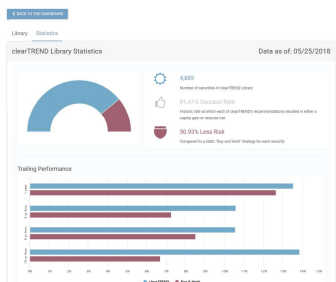
When markets turn, successful businesses and investors turn with them. But until now, you or your advisor may have missed an important turn, leading to excessive risks or missed opportunities for growth. clearTREND can help.

clearTREND is a cloud-based, financial trend engine headquartered in the heart of downtown Appleton, Wisconsin. It identifies market and economic turns for any U.S. sector, any publicly-traded stock, mutual fund, commodity, exchange-traded fund (ETF), market index - even whole countries. It identifies real-time turns for more than 14,000 unique securities and alerts subscribers when the ones they track are turning. It also prescribes simple, common-sense adjustments they should make to either minimize risk (in the case of a market downturn) or maximize opportunities for growth (in the case of a market upturn).

As a clearTREND subscriber, you can easily build a custom list of securities that are important to you or your business. Whenever a security you track turns, clearTREND delivers a timely notification and a buy or sell recommendation to help you stay on the right side of the market trend. Never miss a turn again!

And subscribing couldn't be easier. Visit www.cleartrendresearch.com and click "New User" to create your secure account and pick the subscription level that makes sense for you. You will receive real-time chat support with one of our Trendengineers if you need help, including full training and pro-tips along the way.

See the difference clearTREND can make in your investment portfolio or for your business.



clearTREND Research
100 W. Lawrence St., Suite 306
Appleton, WI 54911

www.cleartrendresearch.com