

# Customer Success Story



## Challenge:

A need to fully manage Azure Stack deployments, using minimal resources, in both a connected and disconnected mode.

## Requirements:

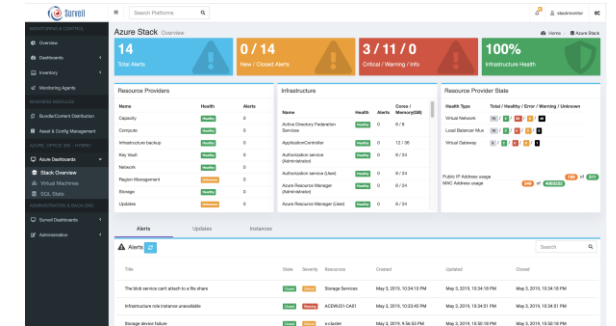
End-to-end management for tooling optimization – from asset management and costing to availability and automation of AI-based tasks on any resource.

## Solution:

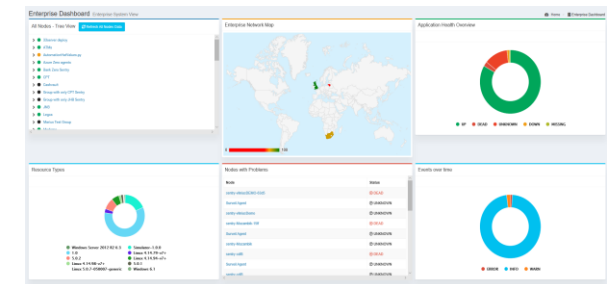
Leveraging Surveil, Avanade was able to install both the Surveil Server and Agents into a both offline and online Azure Stack, and full control via API's, SNMP, IPMI, WMI and Agent based automation. The installation of the Surveil Platform was simple, quick and very cost effective. Furthermore this install can be replicated across on-premise, connected or disconnected or multi-tenant cloud installs.

## WIN RESULTS

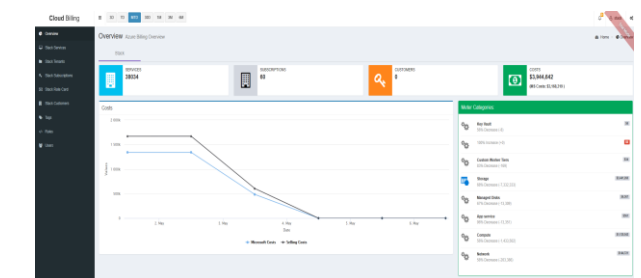
Full suite of capability in connected and disconnected Azure Stack



High availability through a single pane-of-glass install



Detailed asset and costing management for their customer environments – Azure Stack or Azure Cloud



# Customer Success Story



## Avanade view of Surveil for Azure Stack management in their own words

“ As a Service Provider we require the ability to see billing and monitoring data from multiple Azure Stack deployments from a central point. This capability isn’t native within Azure Stack, requiring custom solutions or multiple products to achieve this. Any solution has to be able to monitor connected and disconnected deployments, be reliable and require little maintenance overhead. ”

The Surveil solution provides the mechanism to extract the data and visualise it and add a lot of value for cost management/billing and monitoring of Azure Stack

- On the billing/cost management side
  - For us as a Service Provider: allows us to easily set our own charge model for computing resources
  - For our customer : to use the solution to view their bills
- On the management side:
  - On prem light weight solution equivalent to Azure Monitor
  - Monitoring of multiple Azure Stack regions, tenant workloads as well as well as core Azure Stack infra,
  - All with single pane of glass view
  - And extremely modular with ability to retrieve data from multiple sources”