



CloudMoyo's Interline Settlement System (ISS) automates revenue settlement processing and dispute resolution involved in an interline rail freight shipment. ISS interfaces with Railinc CISS and railroad partners (by processing EDI 426, 864, and 997) and acts as a single source of truth for all data related to interline shipment, enabling certified ISS participation.



Challenges

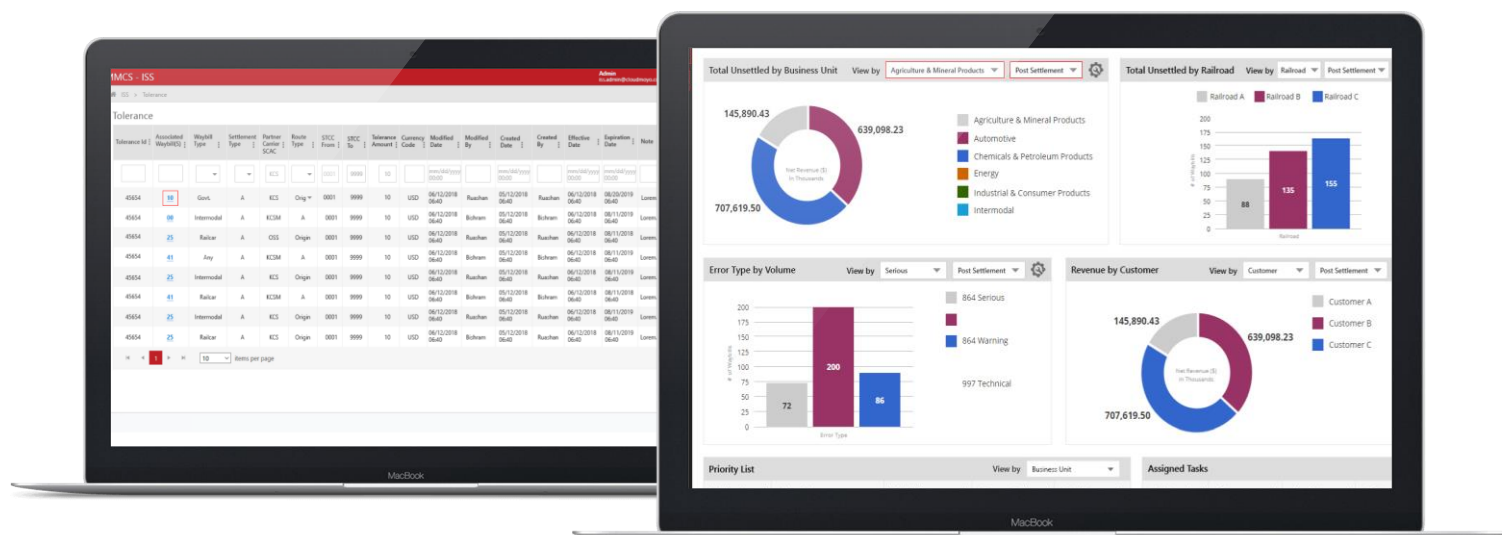
- Onboard technical capabilities to participate in a centralized ISS process
- Increase in interline claims and disputes due to manual errors and system lapses in settlement data
- Non-existent mechanism to settle overcharge claims exceeding the CISS-prescribed claims resolution timeline
- Disparate data sources leading to heavy dependence on technical staff, resulting in a higher settlement cycle time
- Poor data validation and error management owing to the lack of a robust EDI messaging capability

Solution

The ISS application addresses the challenges in rail freight interline settlements by automating key processes, pre-empting errors, reconciling all sources, and exchanging relevant data with CISS in an industry-prescribed format. It provides a flexible platform with a intuitive interface capable of providing role-based access to multiple hierarchies and act as a single source of truth that allows you to manage interline freight revenue efficiently and accurately while accelerating revenue recognition.

Benefits

- Complete automation of the interline settlement system
- Shorter revenue lifecycle, reduced disputes, and improved throughput
- Compliance to AAR, RAR, and ISS front matter
- Comparison of revenue waybill versions between route participants
- Better risk management through sound dispute management process
- Improved operating efficiency with up to 97% concurrence in the first settlement



The ISS solution comes packed with these powerful capabilities:

Smooth and secure EDI message handling

Exchange EDI messages automatically with Railinc in a REN-compliant, secure environment

Industry reference database validation

Minimize application errors and ensure industry data integrity

Data exchange

Import waybills, construct & transmit EDI messages (426, 864, 997) from creation to closure

EDI validation

Verify and transmit EDI messages (426, 864, and 997) with concurrence or opinions through CISS

ISS worklist generation

Reject erroneous waybills and take corrective actions with ISS worklists

Automated EDI correction mechanism

Handle opinions received from partner carriers

Business system connectors

Seamlessly interface with legacy revenue management systems, ERP, and other enterprise applications

Configurable business rules

Effectively configure internal workflows and concurrence rules such as tolerance rates on top of standard, ISS business rules

Reporting and analytics

Deep dive into settlements data with role-based access to predefined and customizable dashboards

About us

CloudMoyo empowers rail and transportation companies to gain greater insights, unlock efficiencies, and improve agility in operations, revenue and asset management, as well as critical areas of safety, crew scheduling, and maintenance. Combined with deep rail industry expertise, our cloud-based, AI-driven solutions leverage cutting-edge technology to reimagine railroad digitization. Headquartered in Bellevue, WA, with a presence in Kansas City, MO and an innovation center in Pune, India, CloudMoyo is partnering to create an efficient, productive, and reliable digital-rail ecosystem.

cloudmoyoTM

Bellevue, WA • Overland Park, KS • Jacksonville, FL



www.cloudmoyo.com



marketing@cloudmoyo.com

**Microsoft
Partner**



Gold Data Analytics
Gold Cloud Platform