

Gestalt Trend

At a Glance

Gestalt Trend

Is an advanced data visualisation tool.

You can switch between multiple views for in-depth analysis using Traditional Line Trends, Parallel Co-ordinate Plots, Fast Fourier Transform Analysis (FFT), Histograms, Limits, XY Scatter, Cross Correlations and Calm Waters.

Share your analysis and collaborate with colleagues via small drag-and-drop files, allowing them to fully interact with your trend.

Get key information to key workers with real-time data access on your laptop, tablet or smart phone.

Key Benefits

Intuitive, easy to use

After a simple installation, users can quickly analyse and diagnose issues, leading to improved operational efficiency and reduced downtime.

Latest Technologies

Seamless operation on all devices and browsers.

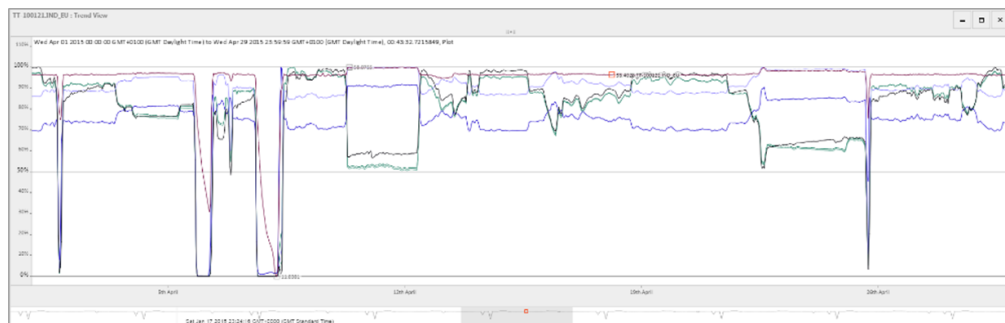
Truly thin client.

Fast Render Time

Optimised to handle busy displays and large data sets.

Standard Trend

The basis of an analysis toolset is, of course, a traditional trend.



Link diagrams together to create PnID projects and embed Intelligent Plant Gestalt Trends, allowing you to review current and historic data within the context of your plant. Standard pan, zoom, normalise, highlight add/delete tags and playback come naturally as standard.

Select "View" tab to change view:

Trend, Parallel Co-ordinate Plot (PCP),

Fast Fourier Transform Analysis (FFT),

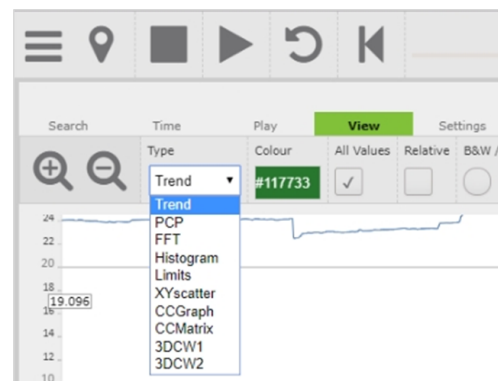
Histogram, Limits, XY Scatter,

Cross Correlation Graph (CCG)

Cross Correlation Matrix (CCM)

Calm Water 1 (3DCW1)

Calm Waters 2 (3DCW2)

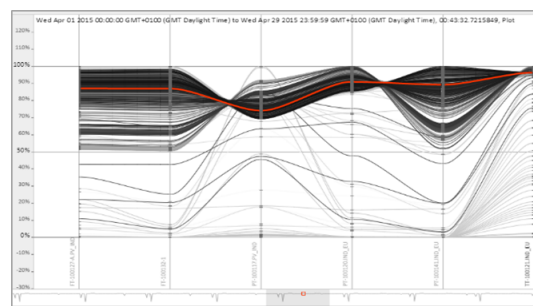


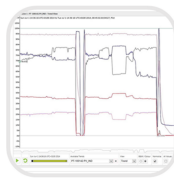
Parallel Co-ordinate Plot

A PCP is a powerful way of visualizing high-dimensional geometry and analysing multi-variate data. Up to 100 points can easily be visualised together.

Relationships between variables and operating envelopes are clearly visible allowing the effect of secondary variables on a primary target. **e.g.** production rate to be seen.

The orange line shows the current selection which corresponds to a single point in time. Points of interest on each variable can be highlighted to see how this corresponds with other tags.





Gestalt Trend

Summary

Historian Agnostic

- No additional interfaces required

Low Bandwidth Requirement

- Works with Offshore
- Standard Display <200KB

VM Ware Compatible

- Licensing via software key
- No dongles required

Integrated Security

- Uses domain security on tree folders and displays

- Easy to manage permissions

Pre-Requisites

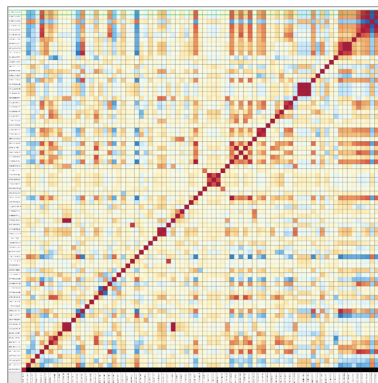
- Requires Windows Server 2008 R2 or later
- Any modern browser
- No plug-ins required

Cross Correlation Matrix

CCMs show the relationships in your data, and is a powerful way of enabling optimisation of plants and processes, showing what appears to affect anything positively or negatively.

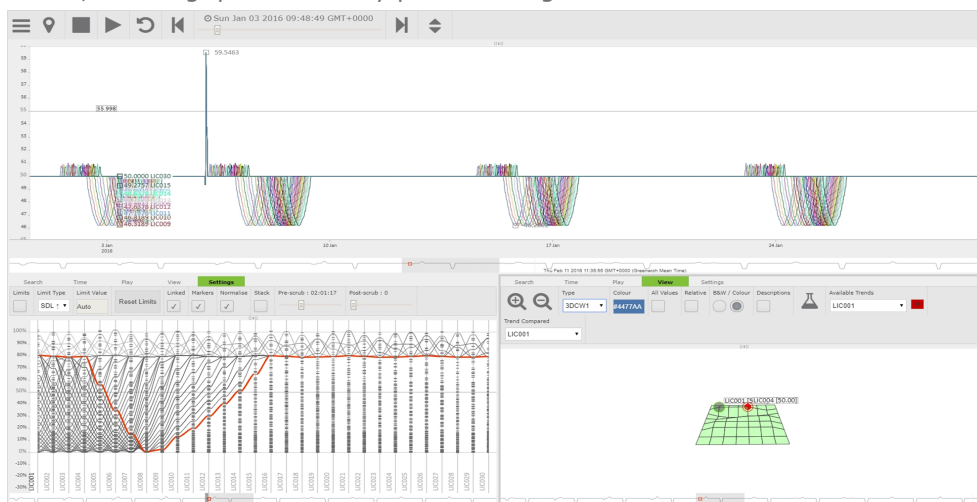
Up to 100 points can easily be visualised simultaneously.

Relationships between variables become immediately apparent.



Putting it all together

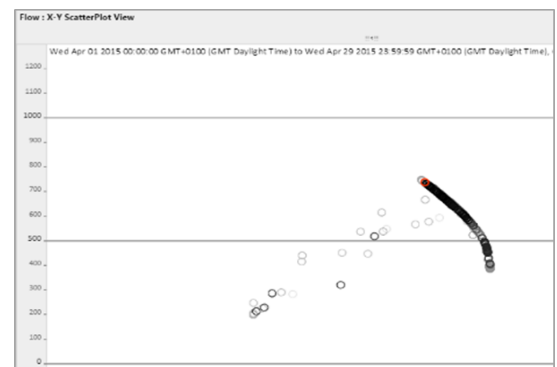
Selecting a point in time on any chart selects the equivalent point on all other charts, enabling quick and easy problem diagnosis.



XY Scatter Plot

Equipment performance can often be quickly analysed with an XY Scatter of key variables, e.g. Flow Vs Head for a pump.

Instances of the equipment operating out of spec can be selected, and switching back to a trend view, it can be seen when this happened in time.



Calm Waters

Developed in conjunction with BP.

Calm Waters is a way of showing deviations from normal, for hundreds of points simultaneously.

