

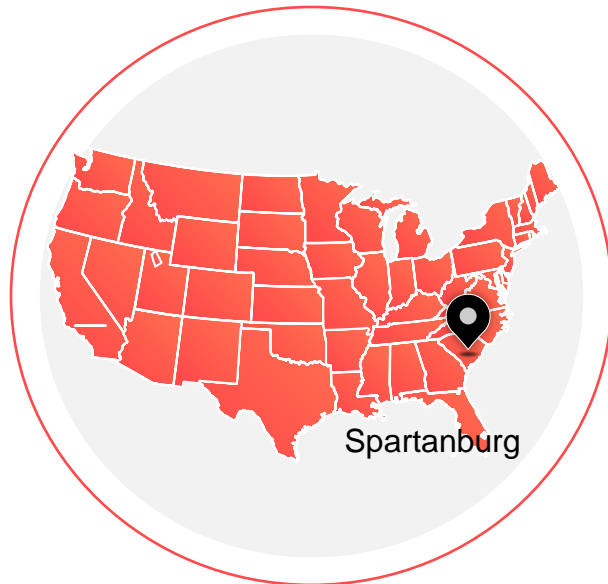
# valantic



Connected Chain Manager

## SUPPLY CHAIN TRANSPARENCY & COLLABORATION

# valantic is there for you: in 25 locations in Europe and the USA



Spartanburg

USA



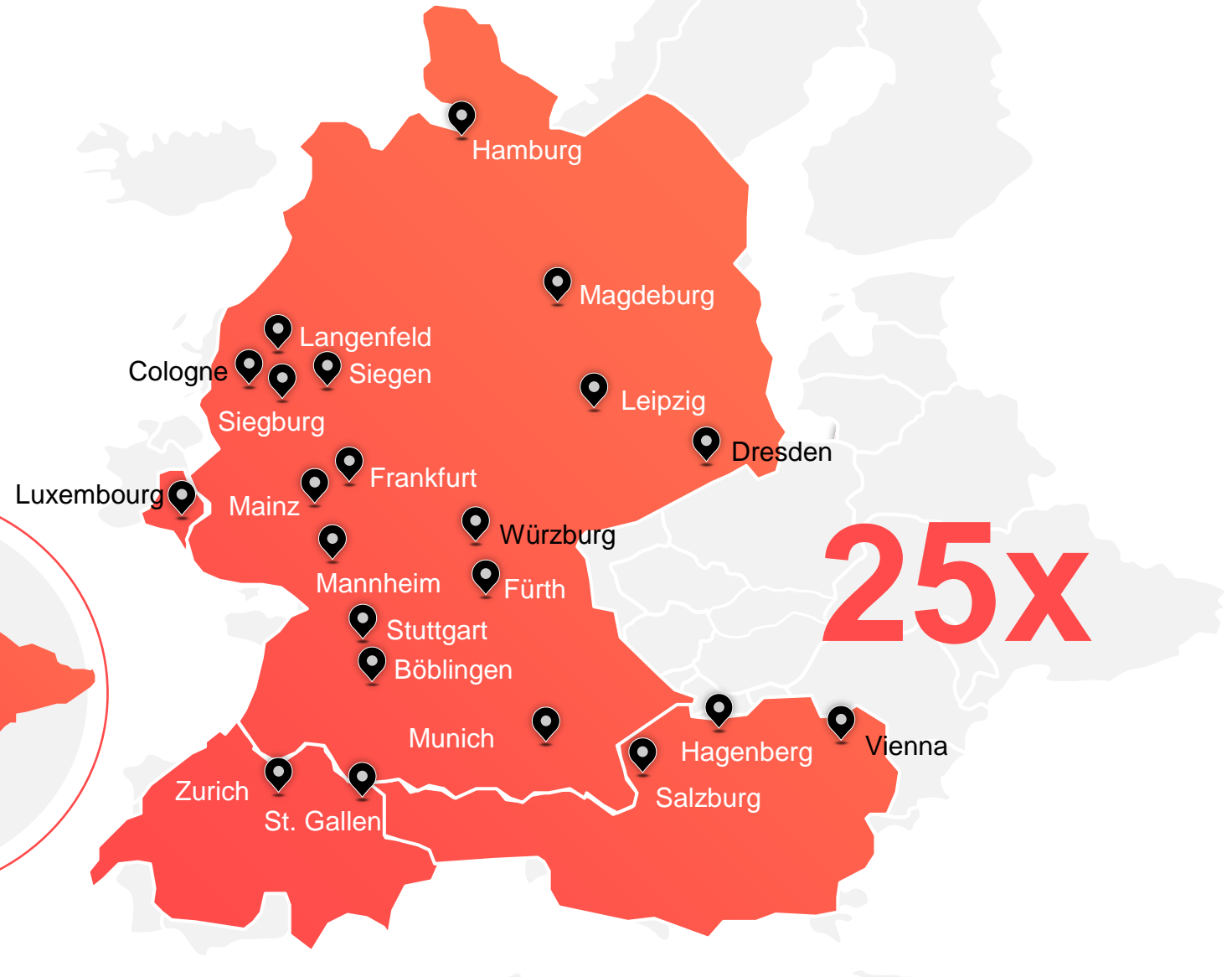
Iași

Romania



Madrid

Spain



Hamburg

Magdeburg

Cologne

Langenfeld

Siegen

Siegburg

Leipzig

Dresden

Luxembourg

Mainz

Frankfurt

Würzburg

Mannheim

Fürth

Stuttgart

Böblingen

Munich

Zurich

St. Gallen

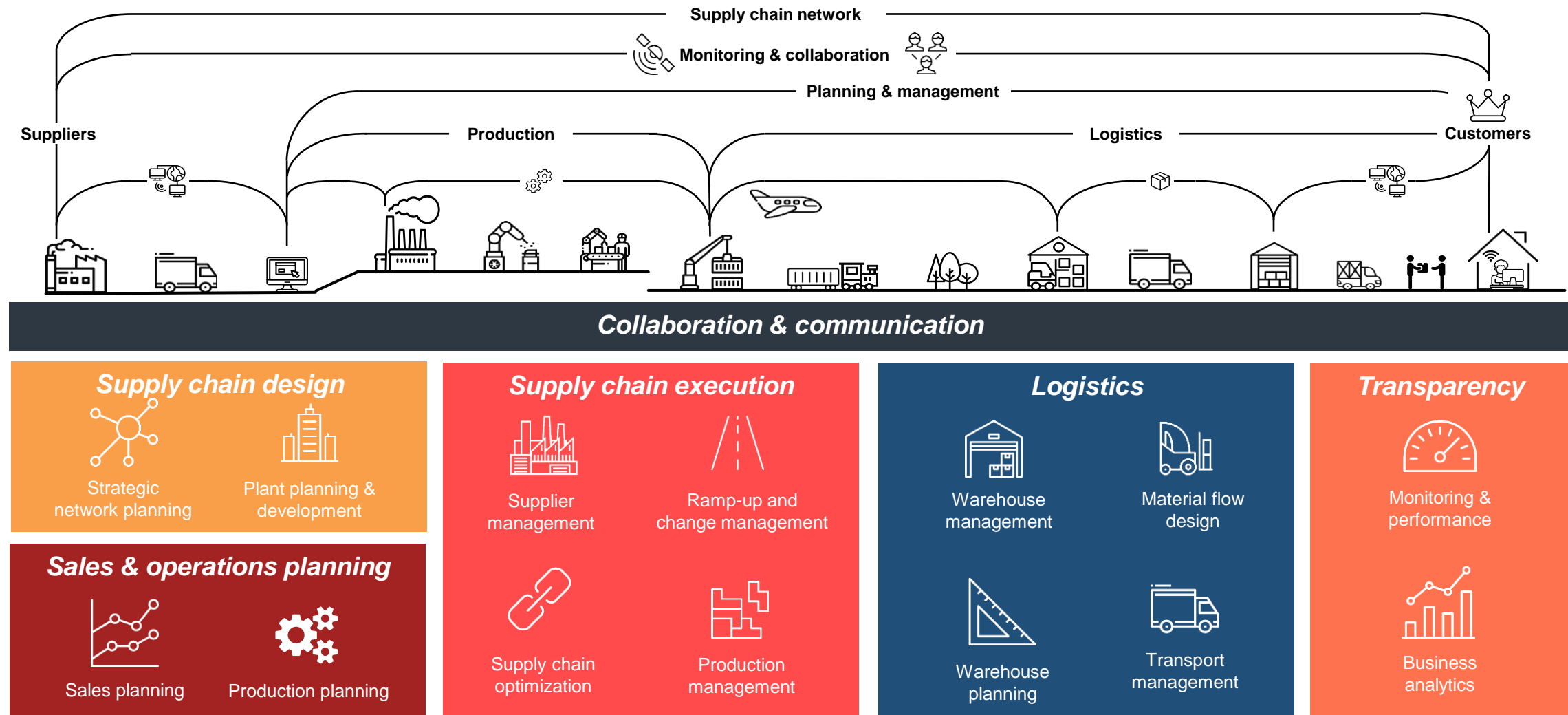
Hagenberg

Salzburg

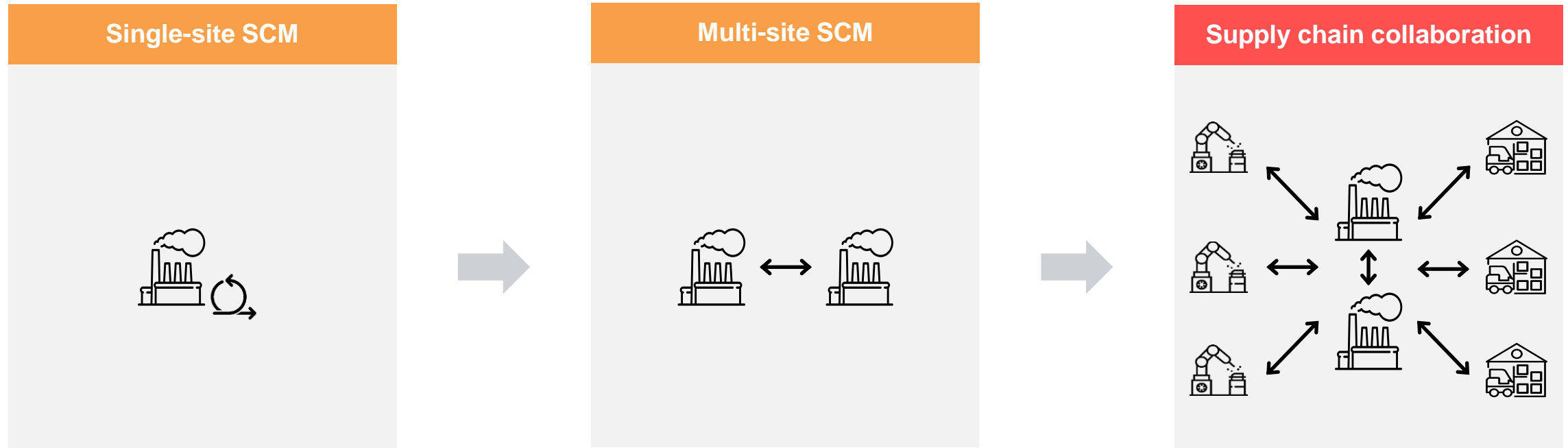
Vienna

25x

# valantic helps its customers with all aspects of the supply chain



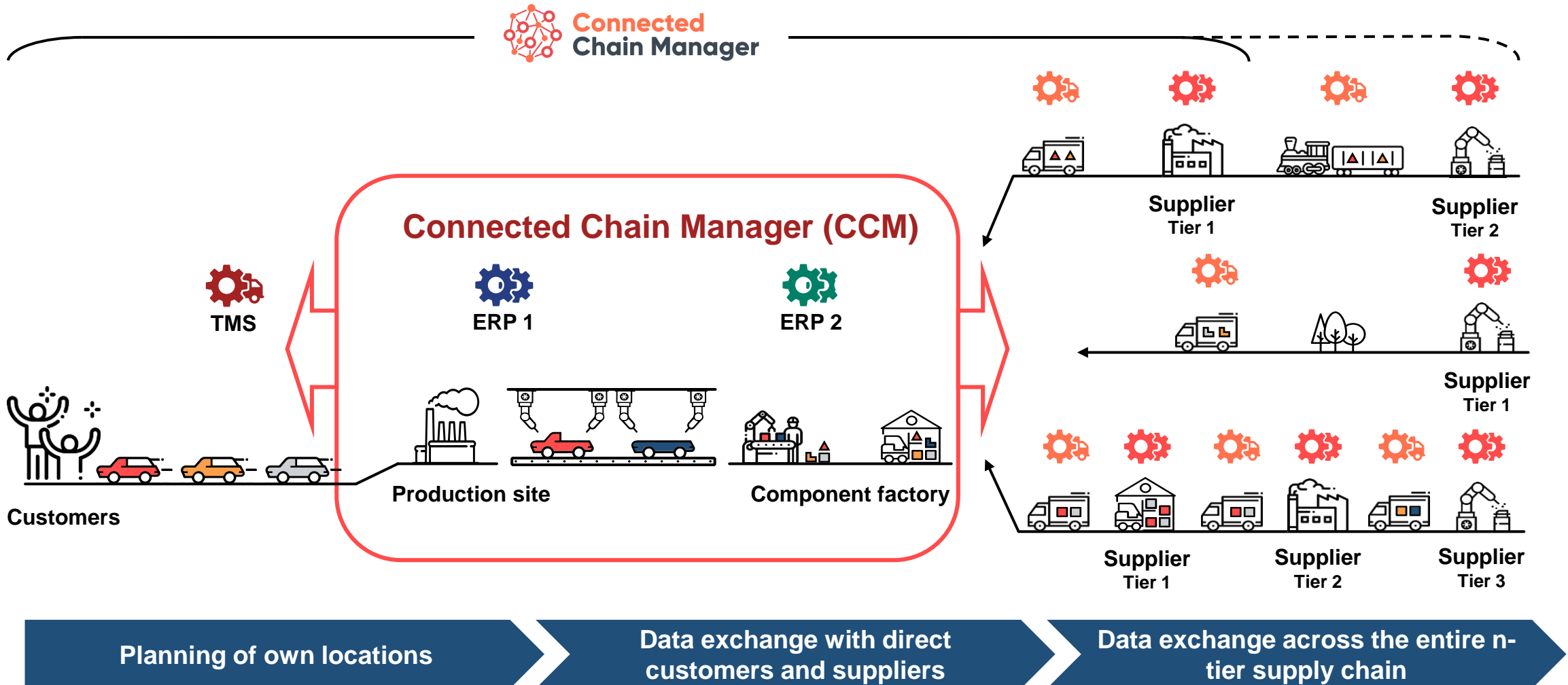
# The future of value creation lies in connecting physical and digital systems



Increasing  
degree of networking and digitalization

Data can be easily collected and evaluated centrally with the technical possibilities available today.

# With the Connected Chain Manager, you shift the boundaries of your ERP system





# Next-generation supply chain management with the Connected Chain Manager



- Powerful supply chain collaboration platform
- Completely web-based with clear and intuitive workflows
- Quick to set up and easy to scale with modules for your use case
- Easy switch between languages (German and English)
- **The Connected Chain Manager (CCM)**



## Supply chain collaboration

### Fast, simple, and goal-oriented:

- Connection/integration of supply chain partners with self-service
- Web-based solution with clear and intuitive workflows
- Communication and collaboration platform
- Common database

## Supply chain transparency

### All relevant key figures at a glance:

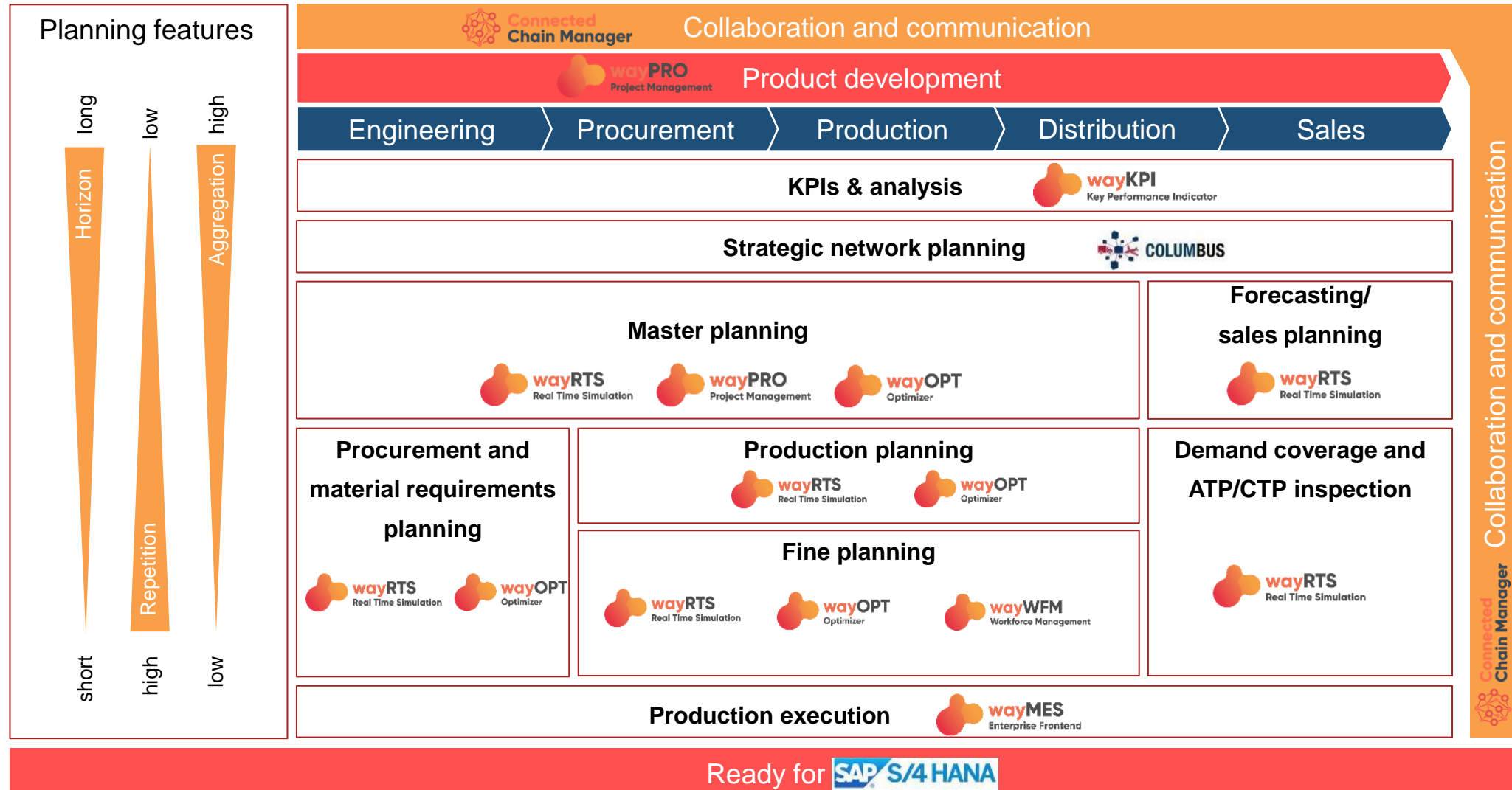
- Structured exchange of information: demands, stocks, delivery capacities, shipments, etc.
- Comprehensive standard reports
- Real-time visualization of the current situation: stock ranges, bottlenecks, risks, etc.
- Cross-tier monitoring increases the performance of the entire supply chain

## Supply chain management

### Cross-tier management:

- Short-term: ensuring of material supply, production, and delivery capability
- Medium- and long-term: securing of delivery capacities and transmission of demand forecasts

# The waySuite product family in the supply chain planning matrix



# The individual functions of the Connected Chain Manager expand the planning possibilities of your waySuite



## Order promising

Communicate date changes



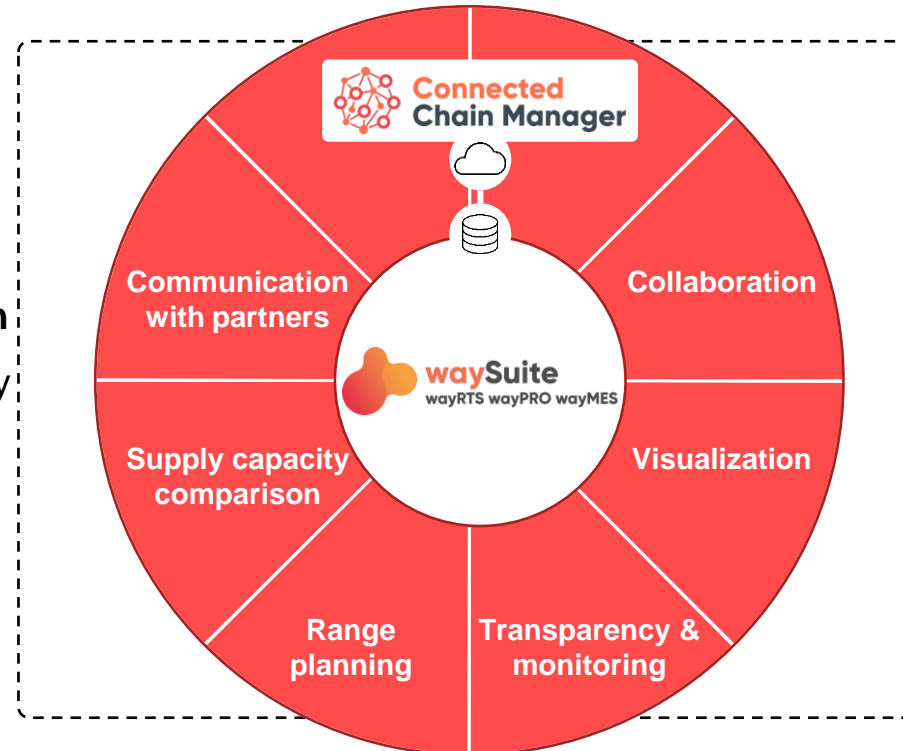
## Supply capacity comparison

Compare demands and supply capacities



## Range planning

Trace inventory ranges



## Collaboration sector

Joint work on tasks and project plans



## Supply chain visualization

Clear display of supply networks



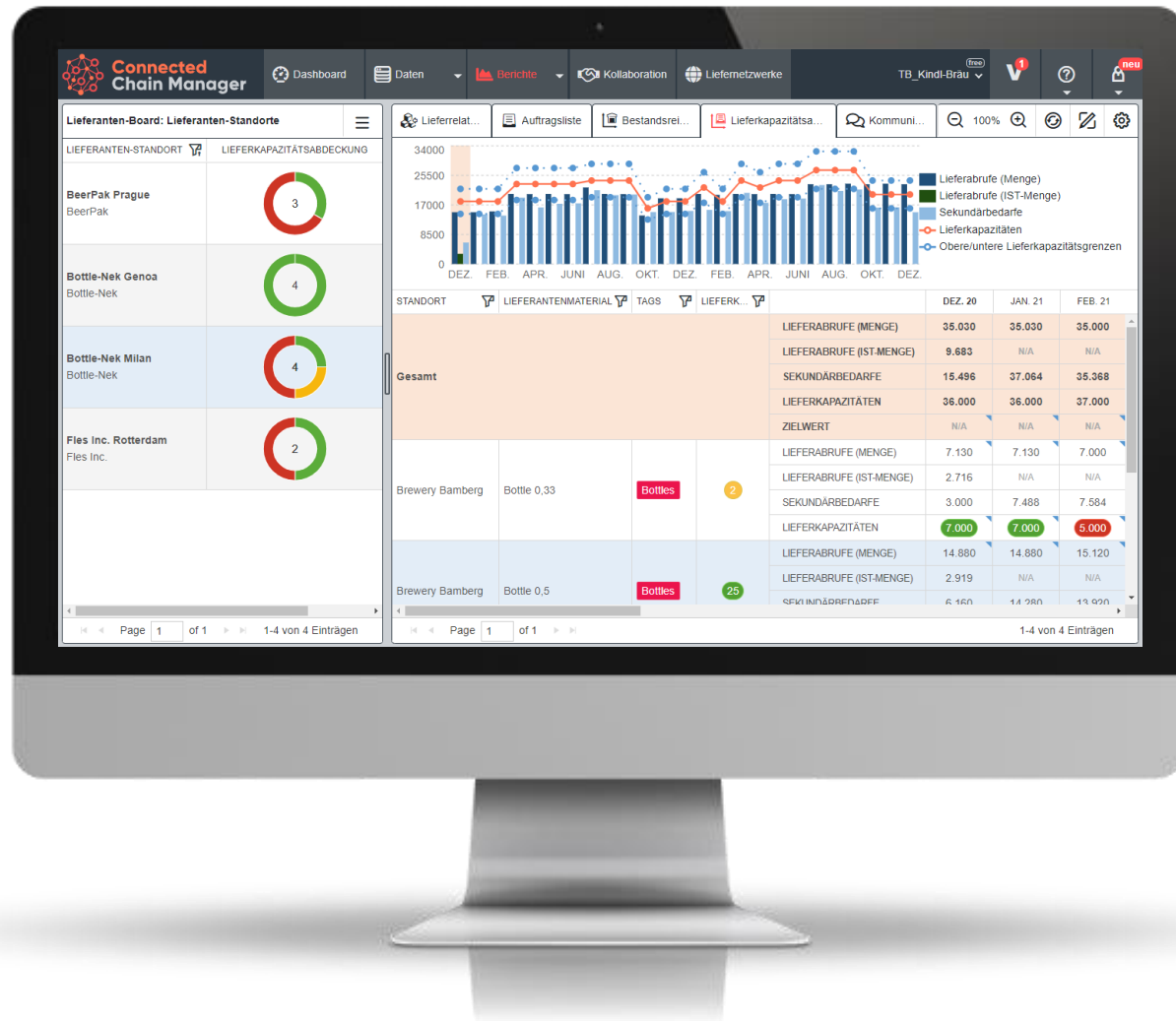
## Supply chain monitoring

Multi-level analysis of inventory ranges





# External supply capacity comparison increases planning reliability



## Functionalities



### Supply capacity comparison

Compare and coordinate demands and delivery capacities



### Demand forecasts

Communicate demand forecasts and compare to actual quantities



### Range indicators

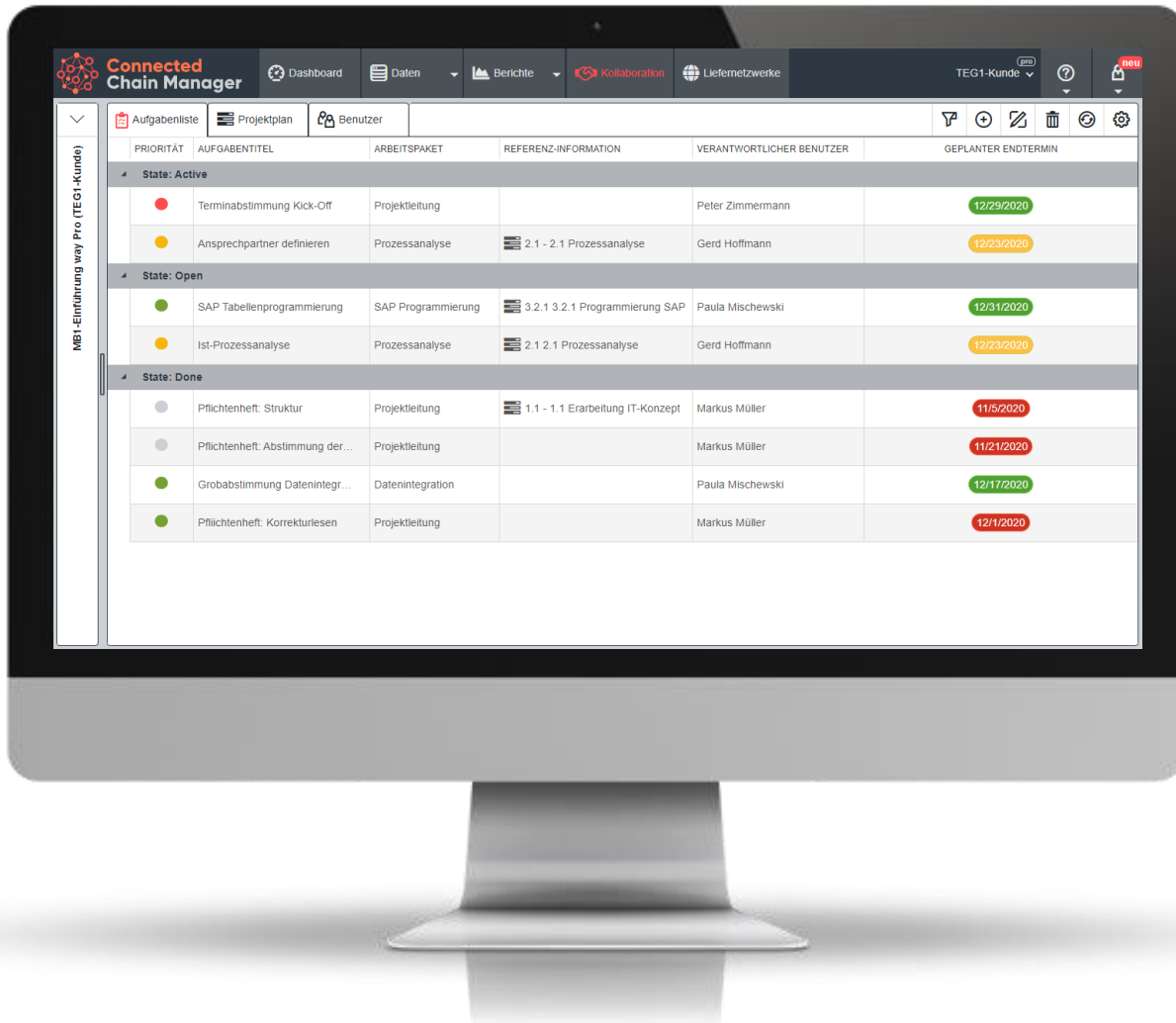
Supply capacity range in months incl. lower/upper limits



### Demand fluctuations

Analyze demand fluctuations thanks to graphic display & alerting

# Task lists enable inter-company cooperation in work areas



## Functionalities



### Task lists

Create and break down task lists with internal and external partners



### Task prioritization

Color marking of priorities and planned end dates



### E-mail notification

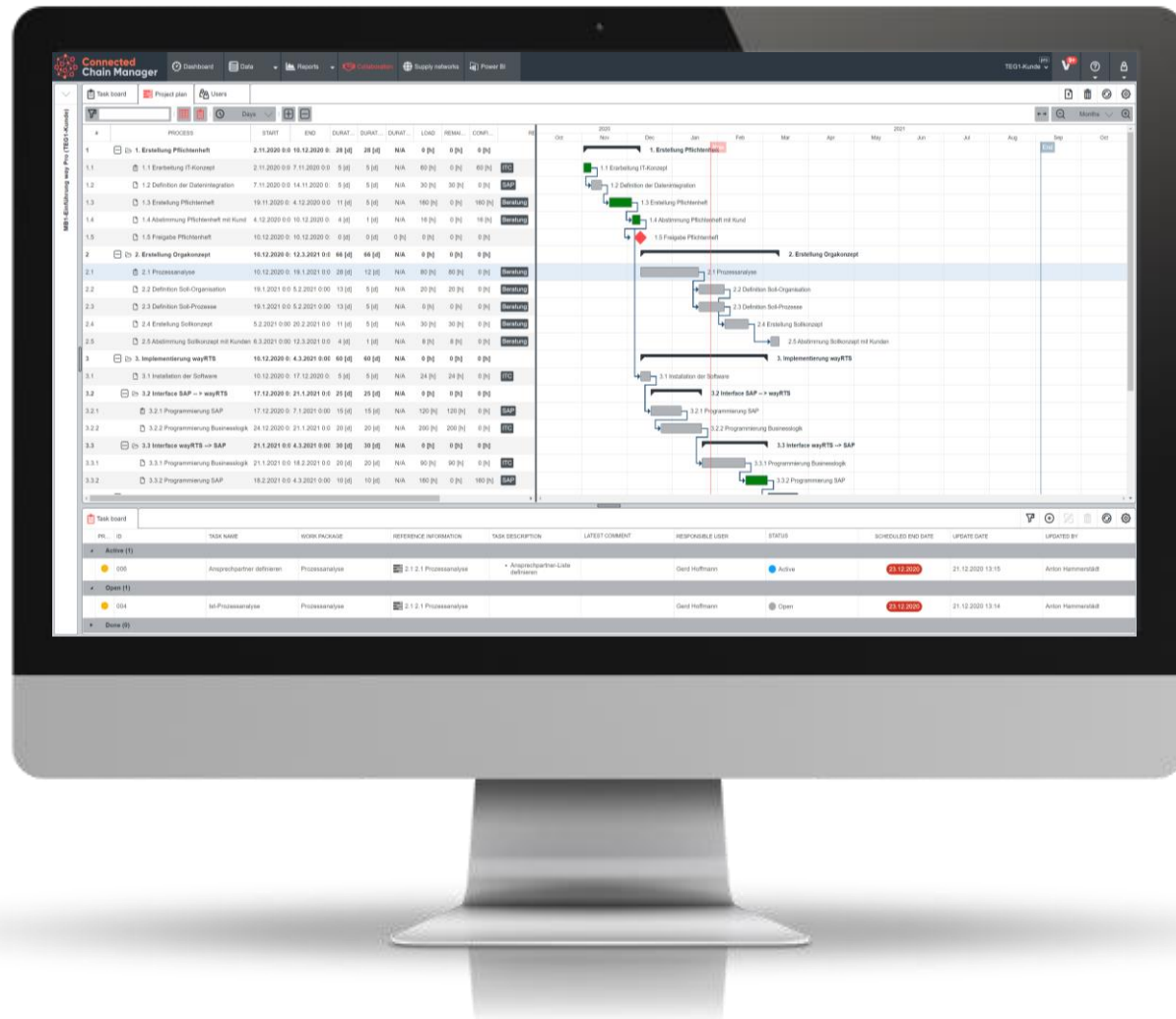
Notification of task assignment and changes



### Change tracing

Tracing of changes such as dates and content

# Share wayPRO and Microsoft Project project plans with project partners via the cloud



## Functionalities



### Collaboration on project plans

Share & communicate project plans with external partners



### Reports

Possibility to report transactions and milestones in the project plan as an external partner



### Task lists

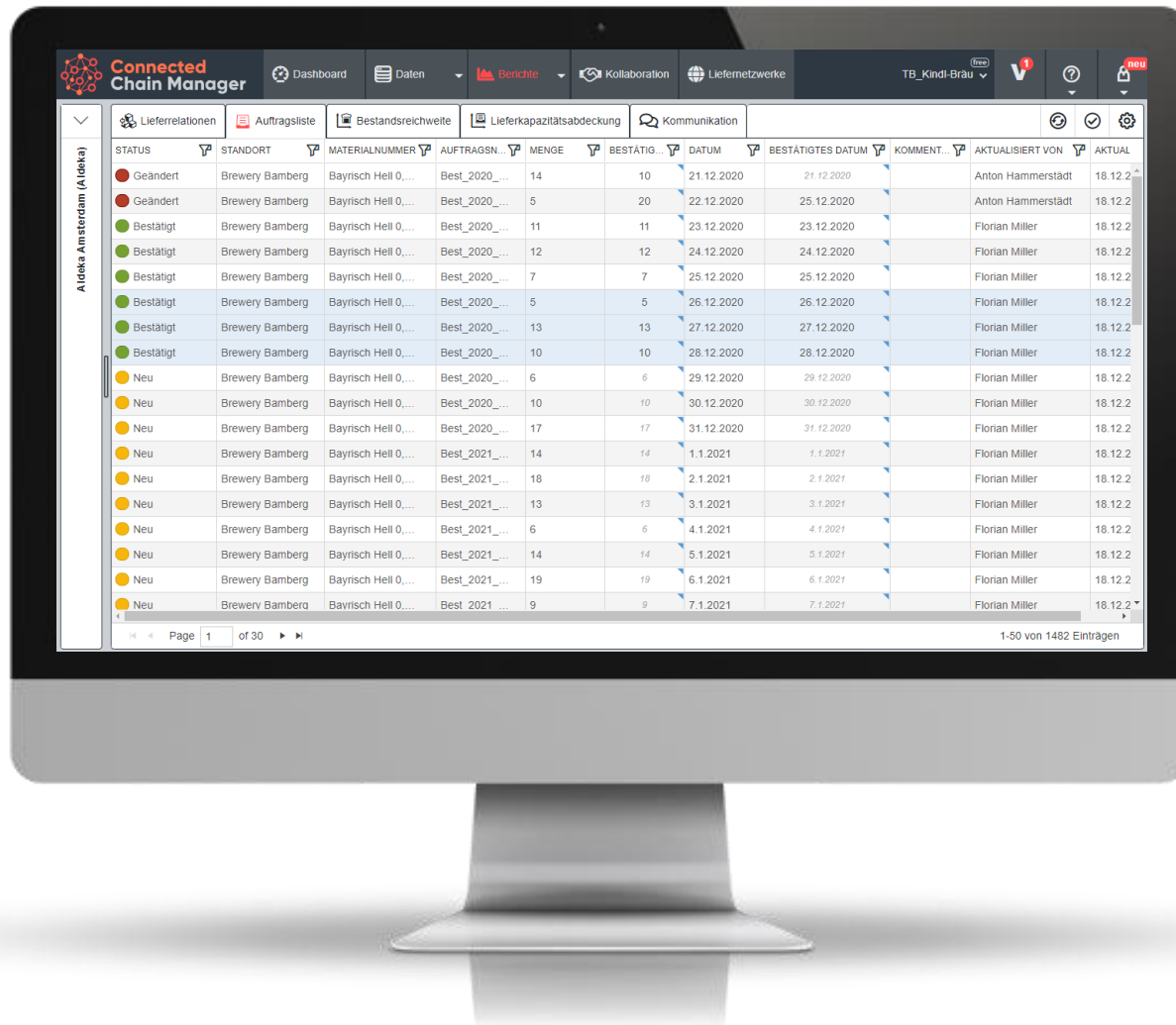
Use tasks for fine coordination in project plans directly in all process steps



### Integration of project plans

Standard interface to wayPRO or manual MS Project upload

# CCM order promising enables easy communication of changes to orders and delivery calls



The screenshot displays the 'Connected Chain Manager' web application. The interface includes a top navigation bar with tabs for 'Dashboard', 'Daten', 'Berichte', 'Kollaboration', and 'Liefernetzwerke'. Below this, a sidebar on the left shows a tree view of the organizational structure, with 'Aldeka Amsterdam (Adeka)' selected. The main content area features a table with columns for 'STATUS', 'STANDORT', 'MATERIALNUMMER', 'AUFTRAGS...', 'MENGE', 'BESTÄTIG...', 'DATUM', 'BESTÄTIGTES DATUM', 'KOMMENT...', 'AKTUALISIERT VON', and 'AKTUAL...'. The table lists various orders, including those that are 'Geändert' (Changed), 'Bestätigt' (Confirmed), and 'Neu' (New). The bottom of the screen shows a pagination bar indicating 'Page 1 of 30' and '1-50 von 1482 Einträgen'.

STATUS	STANDORT	MATERIALNUMMER	AUFTRAGS...	MENGE	BESTÄTIG...	DATUM	BESTÄTIGTES DATUM	KOMMENT...	AKTUALISIERT VON	AKTUAL...
Geändert	Brewery Bamberg	Bayrisch Hell 0...	Best_2020...	14	10	21.12.2020	21.12.2020		Anton Hammerstädt	18.12.2
Geändert	Brewery Bamberg	Bayrisch Hell 0...	Best_2020...	5	20	22.12.2020	25.12.2020		Anton Hammerstädt	18.12.2
Bestätigt	Brewery Bamberg	Bayrisch Hell 0...	Best_2020...	11	11	23.12.2020	23.12.2020		Florian Miller	18.12.2
Bestätigt	Brewery Bamberg	Bayrisch Hell 0...	Best_2020...	12	12	24.12.2020	24.12.2020		Florian Miller	18.12.2
Bestätigt	Brewery Bamberg	Bayrisch Hell 0...	Best_2020...	7	7	25.12.2020	25.12.2020		Florian Miller	18.12.2
Bestätigt	Brewery Bamberg	Bayrisch Hell 0...	Best_2020...	5	5	26.12.2020	26.12.2020		Florian Miller	18.12.2
Bestätigt	Brewery Bamberg	Bayrisch Hell 0...	Best_2020...	13	13	27.12.2020	27.12.2020		Florian Miller	18.12.2
Bestätigt	Brewery Bamberg	Bayrisch Hell 0...	Best_2020...	10	10	28.12.2020	28.12.2020		Florian Miller	18.12.2
Neu	Brewery Bamberg	Bayrisch Hell 0...	Best_2020...	6	6	29.12.2020	29.12.2020		Florian Miller	18.12.2
Neu	Brewery Bamberg	Bayrisch Hell 0...	Best_2020...	10	10	30.12.2020	30.12.2020		Florian Miller	18.12.2
Neu	Brewery Bamberg	Bayrisch Hell 0...	Best_2020...	17	17	31.12.2020	31.12.2020		Florian Miller	18.12.2
Neu	Brewery Bamberg	Bayrisch Hell 0...	Best_2021...	14	14	1.1.2021	1.1.2021		Florian Miller	18.12.2
Neu	Brewery Bamberg	Bayrisch Hell 0...	Best_2021...	18	18	2.1.2021	2.1.2021		Florian Miller	18.12.2
Neu	Brewery Bamberg	Bayrisch Hell 0...	Best_2021...	13	13	3.1.2021	3.1.2021		Florian Miller	18.12.2
Neu	Brewery Bamberg	Bayrisch Hell 0...	Best_2021...	6	6	4.1.2021	4.1.2021		Florian Miller	18.12.2
Neu	Brewery Bamberg	Bayrisch Hell 0...	Best_2021...	14	14	5.1.2021	5.1.2021		Florian Miller	18.12.2
Neu	Brewery Bamberg	Bayrisch Hell 0...	Best_2021...	19	19	6.1.2021	6.1.2021		Florian Miller	18.12.2
Neu	Brewery Bamberg	Bayrisch Hell 0...	Best_2021...	9	9	7.1.2021	7.1.2021		Florian Miller	18.12.2

## Functionalities



### Order processing

Central web platform for support of operative order processing



### Date and quantity changes

Communicate and confirm date and quantity changes



### Tracking of status changes

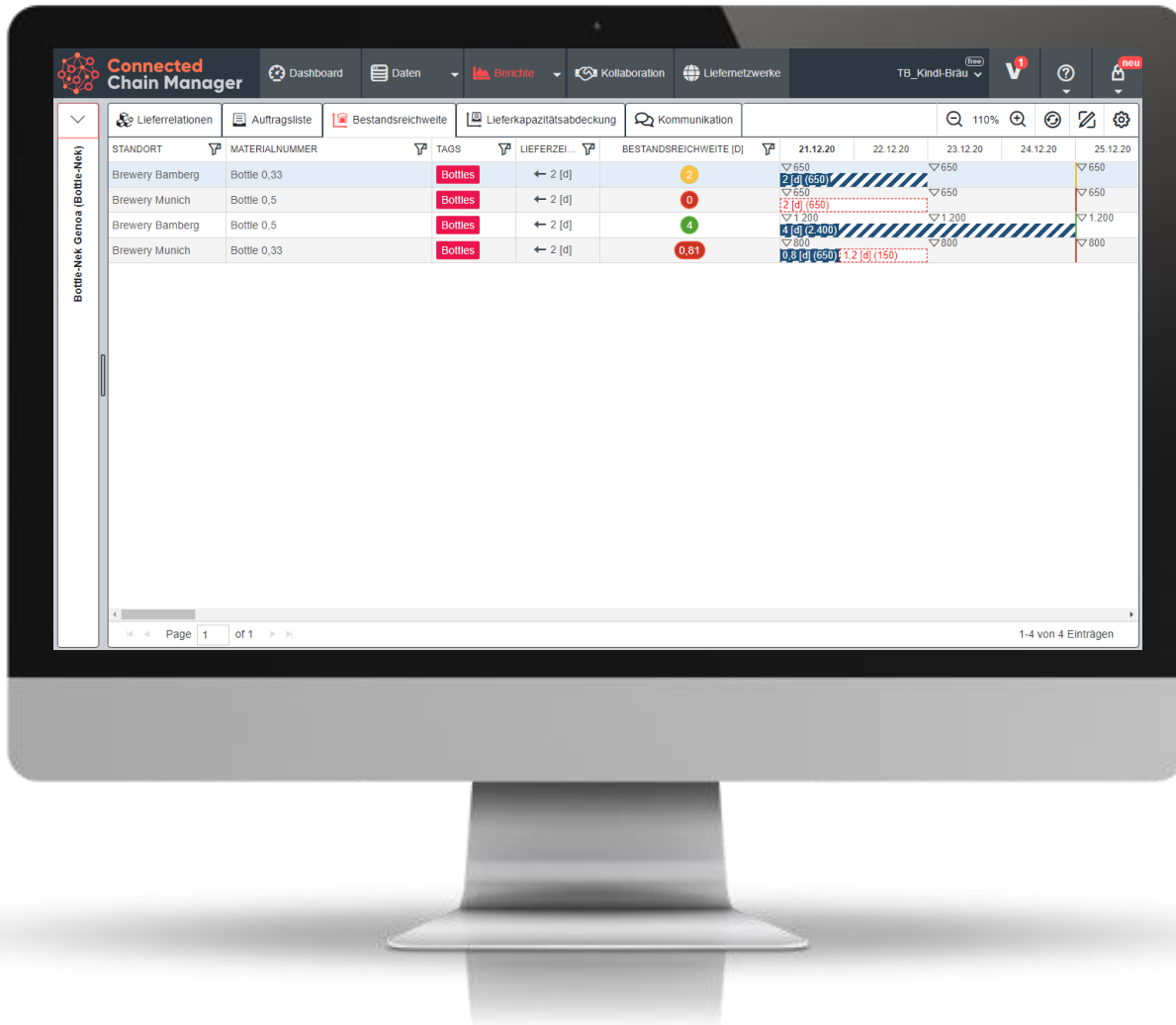
Traceability of status changes and histories in the procurement process



### Synchronization with planning systems

Synchronize order confirmations with ERP and planning systems

# Transparency of inventory ranges ensures the supply situation



## Functionalities



### Quick securing of supply

Ensure quick supply on a daily basis



### Shipment tracking

Exception messages taking into consideration the probable date of arrival



### Range indicators

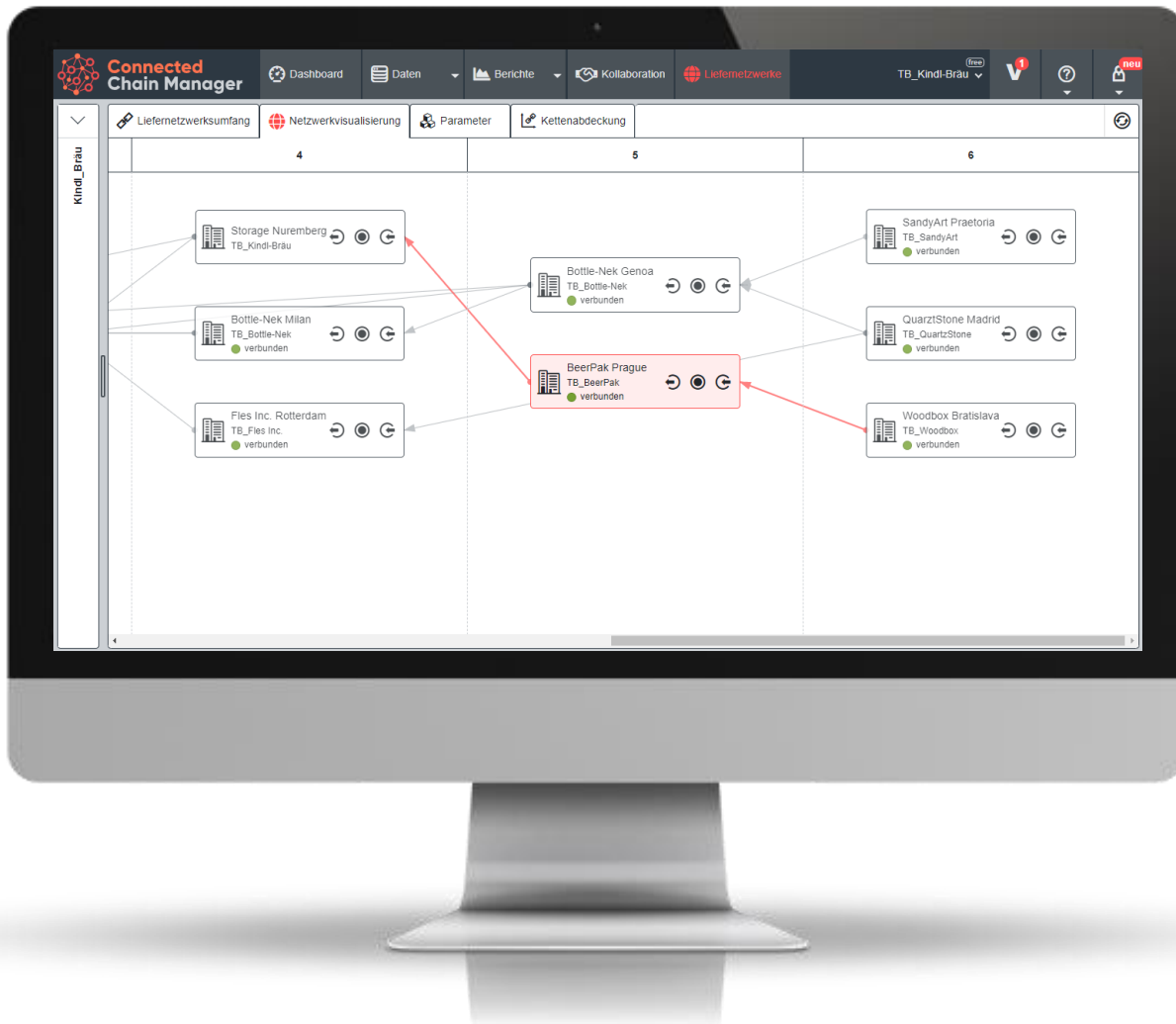
Use inventory range KPIs for quick determination of critical materials



### Inventory optimization

Detect under/overstocks with graphic display

# Supply chain modeling and visualization enables n-tier supply security



## Functionalities



### Network modeling

Visualize complex supply networks and reveal relationships



### Multi-level supply chain transparency

Quickly detect bottlenecks and supply security along the entire supply chain



### Historical evaluations

Possibility for archiving a state of the supply chain for later tracing



### Allocation planning

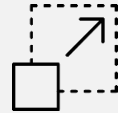
Support for allocation based on demand forecasts and customer priorities



# By using the CCM, you increase your operative efficiency while simultaneously reducing costs



## Productivity



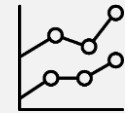
Increase efficiency with software-supported preparation of data



Increase adherence to delivery dates



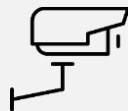
Avoid lost sales due to lacking warehouse inventories



Increase forecast precision



## Process efficiency



Increase transparency & security of supply



Improve customer/supplier relationships



Collaboration based on single point of truth



Avoid bull-whip effects



## Costs



Reduce inventories



Reduce special trips



Reduce penalty payments due to lacking quantities



Exploit cost reduction potential in operative order processing

# Each supply chain partner chooses the best way to transfer data to the cloud

## Select the best way to transfer your data

CCM supports a variety of synchronization scenarios. Many options are supported, from manual data entry in a browser to direct connection to the ERP system.

Supply chain partners can choose the optimal path for their requirements.

- **Data maintenance in the browser**

Smaller data volumes can be maintained easily and quickly right on the web.

- **Web API Connectivity**

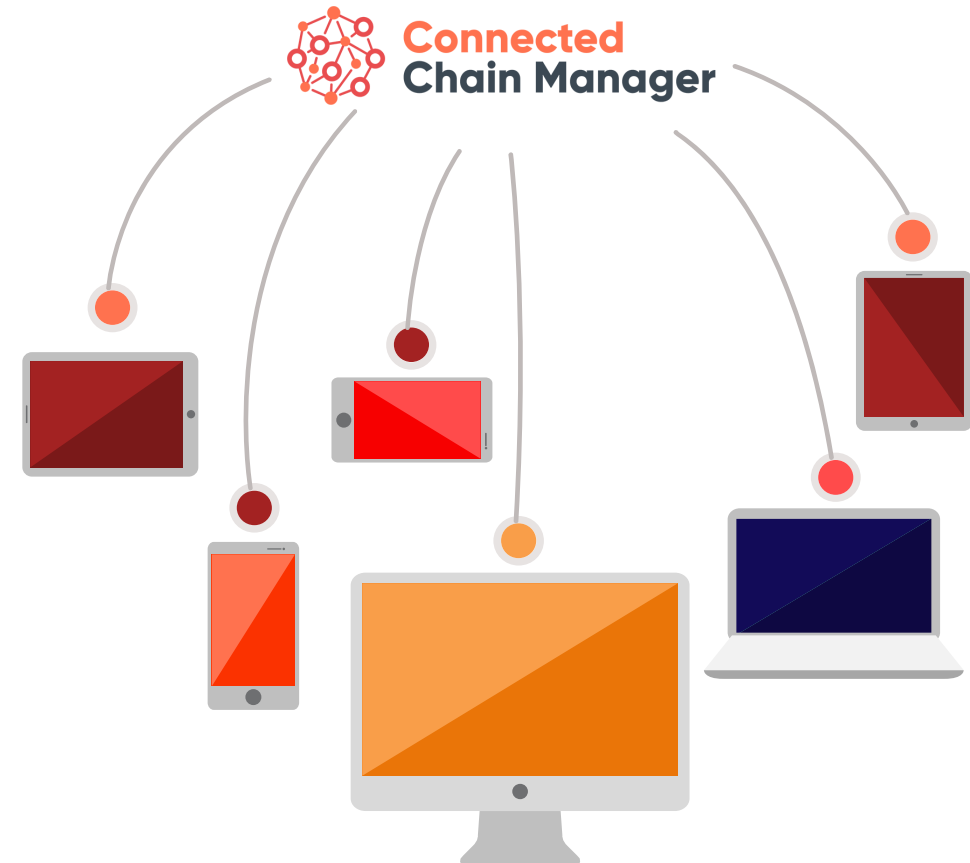
CCM offers standardized interfaces to be integrated by any system.

- **Mass data upload**

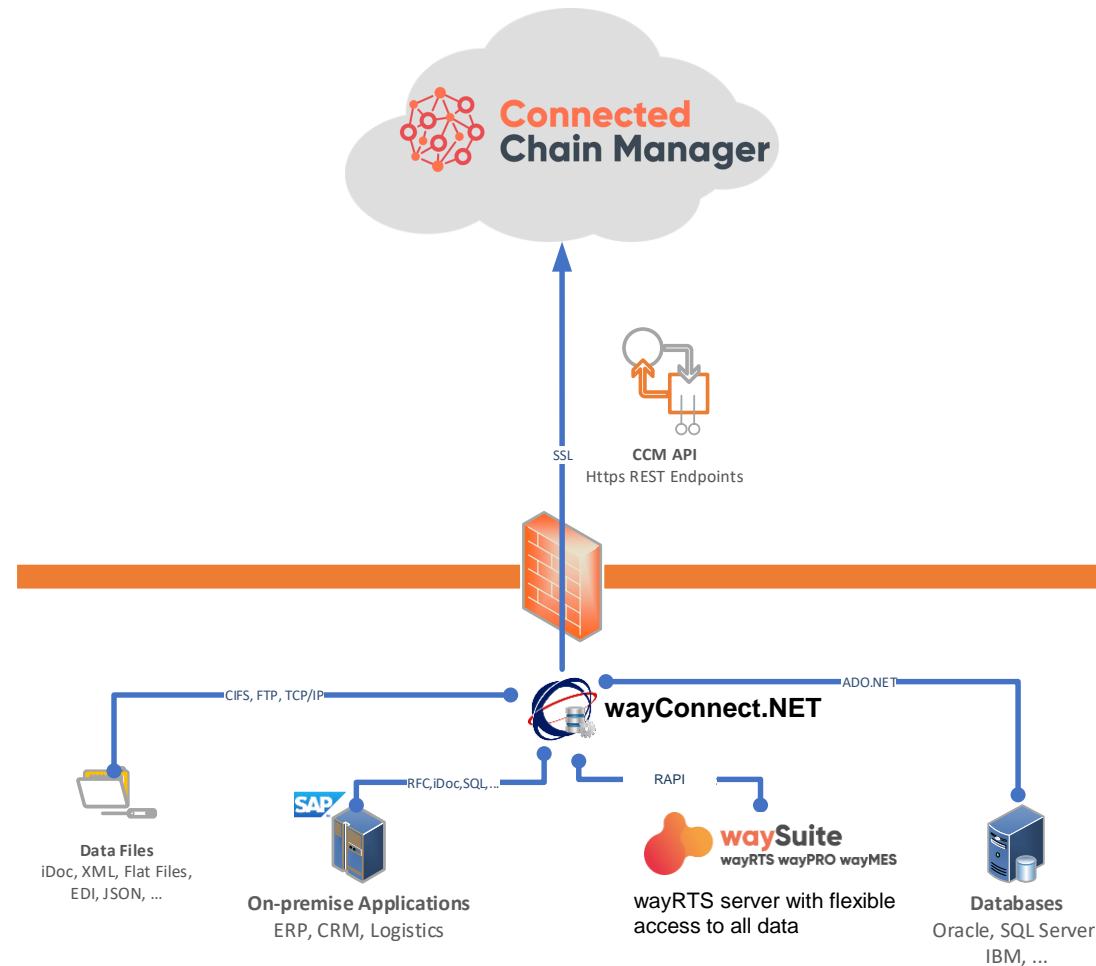
Via .csv uploads, you can also upload larger amounts of data without any data integration

- **valantic Middleware**

Use our wayConnect.NET middleware to synchronize data with CCM\*



## Free integration with existing wayConnect.NET (4.3 and later)



### Key facts:

- Starting with Version 4.3, the way/Connect/Connect.NET middleware integrated into the waySuite offers standard integration to the CCM
- There are no additional license costs
- Upgrade to last wayConnect version can be planned customer-specifically
- Secure SSL connections (SHA-2 and 2048-bit; the strongest on the market) to the cloud
- Use your existing wayConnect installation: no additional server required
- The unidirectional communication from the wayConnect server to the CCM platform means that your network can't be attacked

# CCM offers key advantages as compared to similar software solutions

## Easy to use

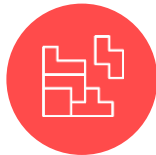
Quick and easy set-up,  
clear and intuitive  
workflows.



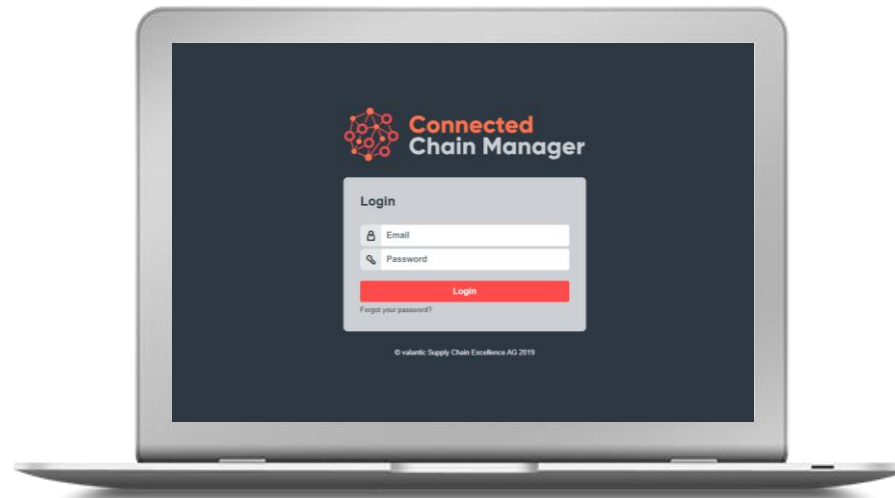
**Transparency  
within hours**

## New features

Continuous and agile  
provision of new  
functions.



**Your requirements  
live in two weeks**



## Flexible reporting

Standardized reports on  
different aggregation  
levels.



**Versatile report  
engine**

## SaaS license model

Web solution, modular  
function modules and  
scalable complexity.



**Precisely tailored  
to your needs**

# We look forward to hearing from say



**Markus Schedel**  
**CCM Product Management**  
**Teamlead SaaS Solutions**

Mobil: + 49 163 5783 137  
Email: [markus.schedel@sce.valantic.com](mailto:markus.schedel@sce.valantic.com)

**valantic SCE GmbH**

Birketweg 21  
80639 München  
Germany

Tel: +49 (89) 578399 0

E-Mail: [info@sce.valantic.com](mailto:info@sce.valantic.com)