

Salesforce

- Overview
- Quick Start
- Connection
- Source
- Destination
- Marketing
- API
- KB
- What's New

Salesforce Source

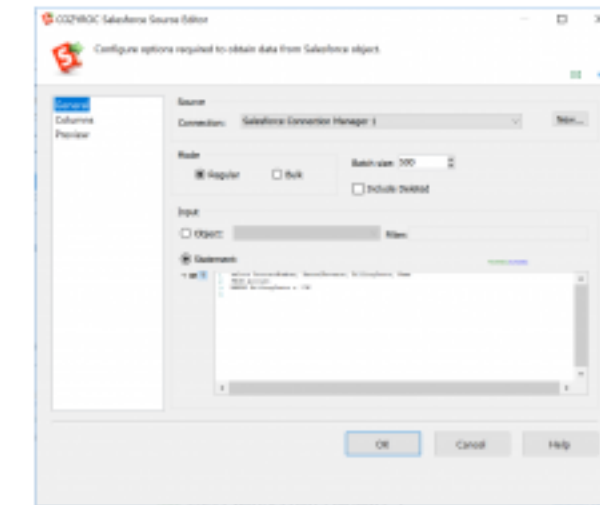
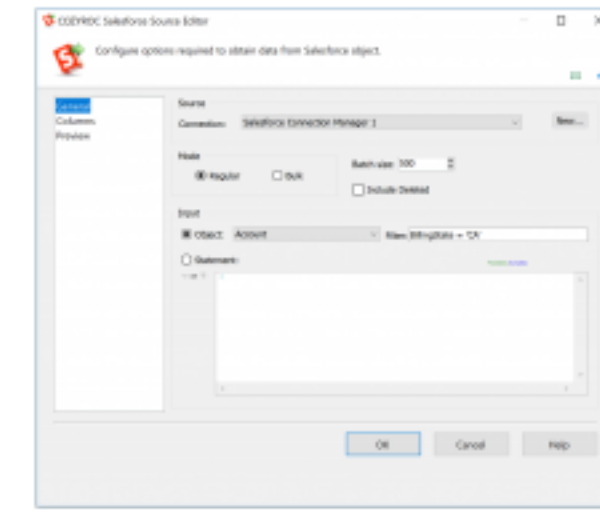
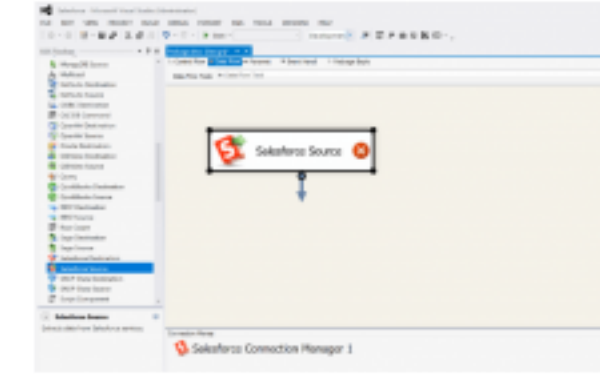
Consume data from service

★★★★★
Average: 5 (1 vote)

In this section we will show you how to set up a **Salesforce Source** component.

1. Before you begin, configure a **Salesforce connection manager**.
2. Drag the **Data Flow Task** from the SSIS Toolbox to the **Control Flow** canvas.
3. Click the **Data Flow** tab to go to the Data Flow canvas.
4. In the SSIS Toolbox, locate the **Salesforce Source** component and drag it onto the **Data Flow** canvas.
5. **Double-click** on the component on the canvas.
6. Once the component editor opens, select the connection manager you configured earlier from the **Connection** drop-down list.
7. For **Mode**, either select **Regular** or **Bulk**.
8. For **Input**, either select **Object** or **Statement**.
9. If you selected **Object**, then select the object you want to work with from the drop-down list. You may also specify a **Filter**, as shown in the figure.
10. If you selected **Statement**, then compose a **SOQL** statement to retrieve the object columns and records you want from the source.
11. Click **OK** to close the component editor.

Congratulations! You have successfully configured the Salesforce Source component.



Salesforce Destination

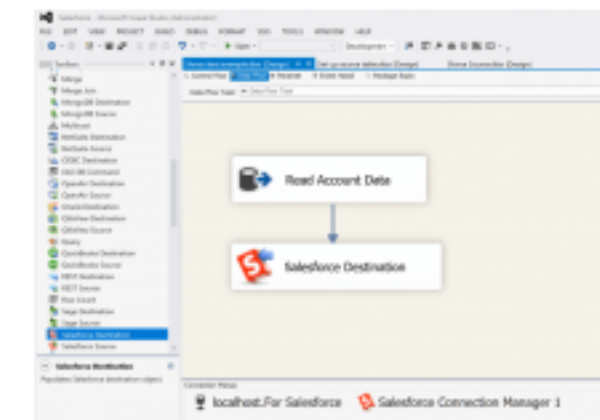
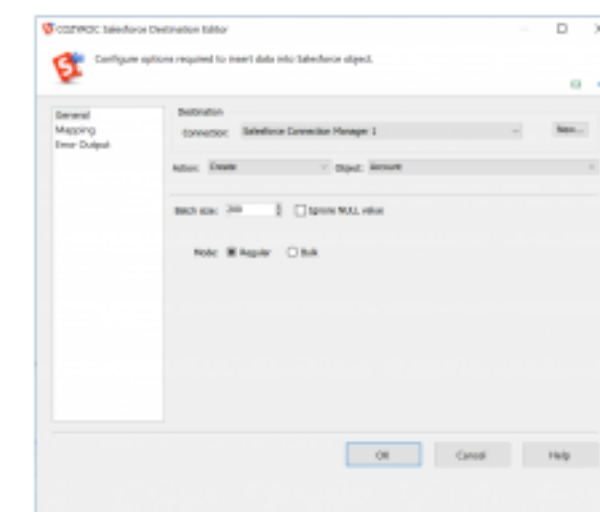
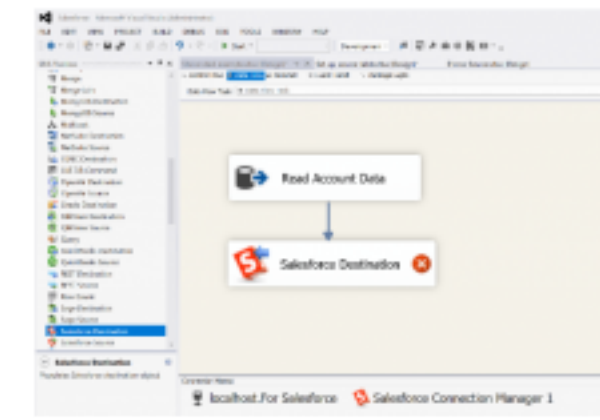
Push data to service

★★★★☆
Average: 3.2 (16 votes)

In this section we will show you how to set up a **Salesforce Destination** component.

1. Before you begin, configure a **Salesforce connection manager**.
2. Configure a **source component** that will provide the data to be written to Salesforce.
3. Ensure that you are on the **Data Flow** canvas.
4. In the SSIS Toolbox, locate the **Salesforce Destination** component and drag it onto the **Data Flow** canvas.
5. Connect the **blue arrow** from the source component or the data flow transformation that you want to immediately precede the Salesforce Destination component.
6. **Double-click** on the component on the canvas.
7. Once the component editor opens, select the connection manager you configured earlier from the **Connection** drop-down list.
8. Choose the desired **Action** (Create, Update, Delete, or Upsert).
9. Choose the **Object** you will be working with.
10. The options will vary depending on the **Action** you selected. Check the options you desire. Descriptions of the options can be found in the **Parameters** section of the Salesforce Destination documentation.
11. For **Mode**, either select **Regular** or **Bulk**.
12. Click **OK** to close the component editor.

Congratulations! You have successfully configured the Salesforce Destination component.



Salesforce CRM Analytics Connection

Establish connection

Consume data from service

Push data to service

Salesforce Connection

Establish connection

Contribute



COZYROC SSIS+ Components Suite is free for testing in your development environment.
A licensed version can be deployed on-premises, on Azure-SSIS IR and on COZYROC Cloud.

Download Now!

Newsletter

Join VIP subscribers getting **Exclusive** COZYROC SSIS+ Library updates, private Q&A and more.

Email Address

No spam, ever. Just great stuff!

Join

Contact Us

Address: 4350 Lassiter at North Hills Ave, Raleigh, NC 27609, United States

Phone: +1 (919) 249-7421

Pre-Sales: Schedule a call

Support: Help Center

Follow Us



Support

Help Center

Getting Started

Licensing

Tutorials

Forum