



peloton
well focused®

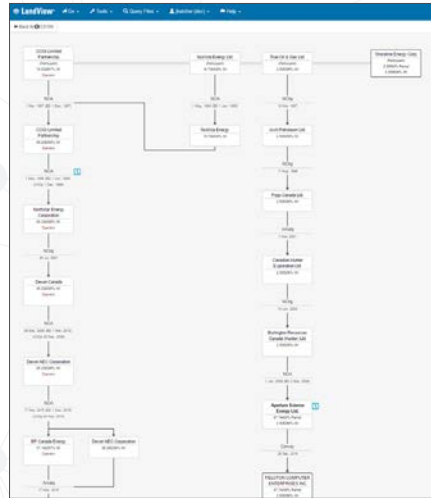
INTEGRATED WELL LIFECYCLE DATA MANAGEMENT SOLUTIONS

LandView®

COMPREHENSIVE LAND MANAGEMENT TOOL

LandView is a complete land management system that tracks every file type throughout the land process. These file types are associated with their respective well, facilities and business associates, in addition to the related files within the system. Track obligations, payments, royalties, acreage and division of interest. View this data in the title chain visualizer and reporting tools.

- Contract, Mineral & Surface Lease Management
- Title Chain Visualizer
- Obligations & Payments
- Acreage Reporting
- Royalty Management
- Track Wells & Facilities
- Units, Pooling & Joint Ventures

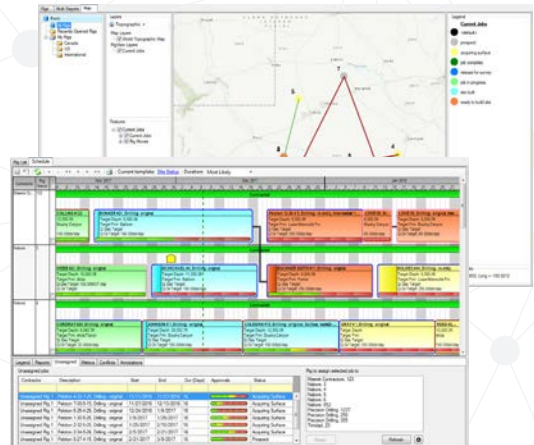


RigView®

INTERACTIVE RIG & WELL PROJECT SCHEDULING

RigView is an interactive rig and well project scheduling system capable of managing well workloads such as drilling, completions, workovers, service and testing. Share files and schedules, manage jobs, review contracts and customize reports.

- Drilling & Completion Rig Scheduling
- Frac & Service Rig Scheduling
- Resource Scheduling
- Activity Readiness Tracking
- Interactive Live Schedule Sharing



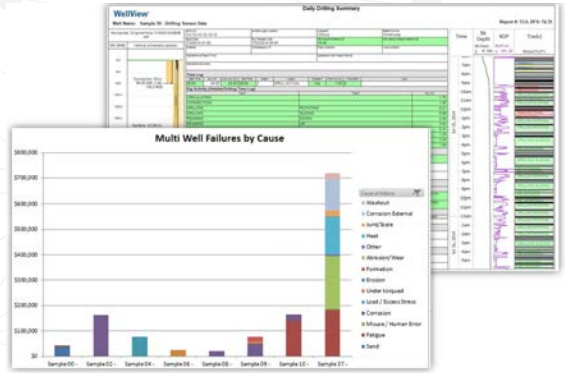
WellView®

DRILLING & WELL OPERATIONS DATA MANAGEMENT

WellView is a complete well information management system for well planning, drilling, completion, testing and workovers. This single comprehensive drilling and well information database reduces duplicate data entry, improves data quality, and creates a collaborative information environment.

Working seamlessly with Peloton's MasterView, WellView is part of an integrated well lifecycle analysis and visualization solution.

- Geological Prognosis
- Well Planning
- Regulatory Reporting
- Drilling Operations
- Geology Operations
- Completions
- Well Operations / Interventions

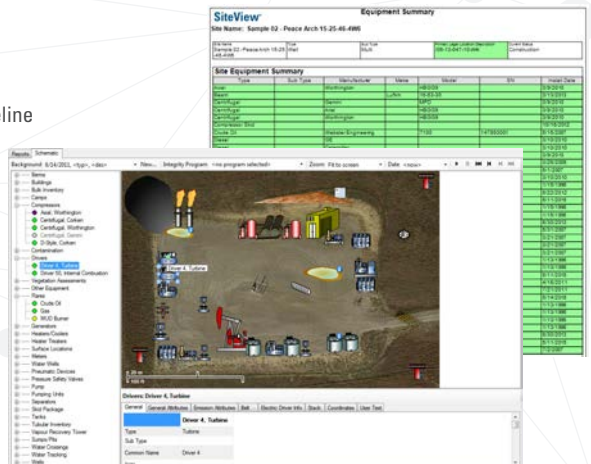


SiteView®

CONSTRUCTION, RECLAMATION, PIPELINE, FACILITIES & WATER DATA MANAGEMENT

SiteView is a construction, remediation, reclamation and facilities management information system. Plan, track activities and measure performance in one consolidated database. Manage operations efficiently and reduce overall costs.

- Regulatory Reporting
- Site Construction
- Facilities, Construction & Pipeline
- Reclamation & Remediation
- Oilfield Water Management



ProdView®

PRODUCTION DATA MANAGEMENT

ProdView is the most comprehensive production and operations data management system available in the marketplace today, and is designed to improve the way the oil and gas industry records, verifies, visualizes and reports on this data. ProdView encompasses field data capture, data quality control, data analytics and well surveillance, schedule and task management, month end reconciliation, allocations and regulatory reporting. Leverage an integrated Peloton well lifecycle solution to get the most value out of your data.

- Field Data Capture
- Operations Management
- Daily/Monthly Allocations
- Well Surveillance
- Data Analysis
- Regulatory Reporting
- Integration with WellView & SiteView



Peloton SaaS®

Peloton SaaS (Software as a Service) is a managed service for Peloton's applications (WellView, SiteView, RigView, ProdView and LandView). Peloton hosts the applications and data on its secure and backed up servers, and users gain access using a web browser. No need for a client application installed on their machines. If users are on the move or have an unreliable internet connection, disconnected/sync access is also available.

Users seamlessly receive updates, upgrades and new functionality as soon as they are available.

With Peloton SaaS, you have:

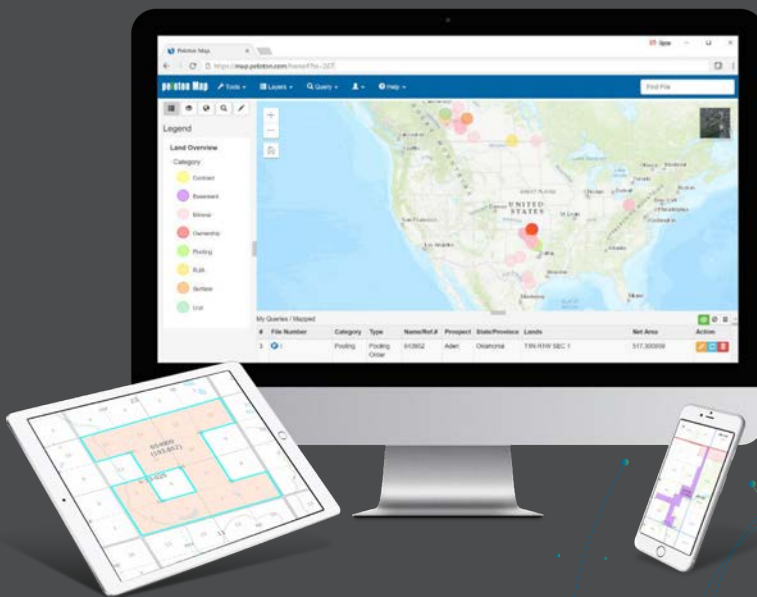
- Availability of your Peloton applications
- User access through a web browser
- Disconnected access as needed
- Automated distribution of reports
- Automated 3rd party imports
- APIs and direct database connection



Peloton Map

Peloton Map is our latest web application, and it is a fully functional GIS application. Starting with LandView, it completely integrates and displays your operational data on a map for viewing and analysis. Peloton Map uses our GeoMapper tool to automatically convert legal land descriptions into geospatial polygons against all North American survey systems. The GeoMapper utilizes our internal Peloton Grid, and the application is based on Esri's ArcGIS. You can use the built-in features with LandView as part of the SaaS Basic subscription or upgrade to Premium to access additional GIS functionality.

- Use the GeoMapper to automatically generate geo-spatial polygons down to the aliquot/quarter call
- Take advantage of the proprietary Peloton Grid or connect to your own
- Launch Map directly from LandView or launch LandView directly from Map
- Access all your LandView query results and data in Map
- Use feature creation, editing and markup tools
- Apply advanced visualization layers
- Use advanced spatial analysis
- Connect to your in-house ArcGIS Online/Portal/Enterprise account for seamless integration with existing GIS feature classes, layers and web maps



PELTON: FEARLESS INNOVATION

At Peloton, we're 'well focused' on bringing small, mid-size and large oil and gas operators the world's best well lifecycle data management solutions – equipping your business with the tools and information necessary to manage, simplify, and optimize your operations.

The word "peloton" means fearless or brave in Finnish, and platoon or group in both French and Spanish. The name seemed a perfect fit for this company, a "fearless group" committed to building drilling and well data software that improves our oil and gas operations across every stage of the lifecycle.

Over 450 oil and gas companies across the world rely on our technology to make better-informed decisions and to become better-focused organizations. This is a responsibility we take seriously.

Over time, we've grown from a two person startup in 1991 to a global software company with subsidiaries in all regions of the world.



GET THE MOST OUT OF YOUR WELL DATA

REQUEST A DEMO TODAY

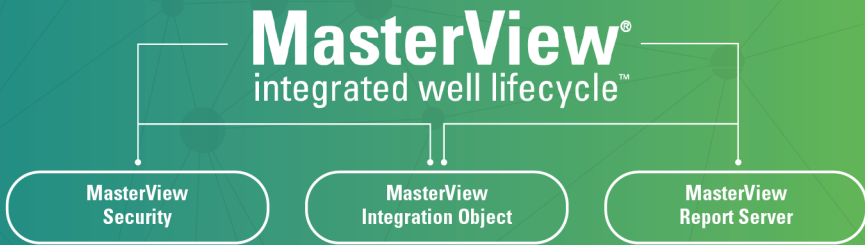
➔ www.peloton.com

MASTERVIEW: THE WAY TO MAKE YOUR DATA TALK

Peloton's MasterView is a comprehensive data management solution for drilling and well operations. Included in MasterView are tools and applications for editing, gathering, monitoring, and reporting on data. MasterView gives users a complete view of the well lifecycle by consolidating data between programs that depend on one another.

MASTERVIEW COMPONENTS INCLUDE THE FOLLOWING:

- Product databases
- Security administration
- Well lifecycle integration
- Software Development Kit
- MasterView Data Warehouse, a central repository of physical and logical data for all applications
- Reporting services to give real-time access to application reports



GLOBAL OPERATIONS



PELOTON SERVICES & SUPPORT

Get the most out of your Peloton solutions with our well-executed services. Whether you're in the midst of a new software implementation, or have used our software for the past 10 years, our team of consultants will increase the value of your Peloton investment.

SOFTWARE CONSULTING

From the moment your organization implements our process, Peloton's consulting group is on deck, helping you optimize your Peloton Products to increase efficiency, integrate existing platforms and maximize your capabilities.

SOFTWARE TRAINING

Expertly guiding your team through the features and workflows that make LandView, RigView, WellView, SiteView, and ProdView successful within your organization.

SOFTWARE SUPPORT

Our Software Support is available to you 24 hours a day, from anywhere worldwide with access to an internet connection. Peloton's Software Support also includes telephone and email support.

www.peloton.com

1.888.PELOTON (735.6866)