



AppSmiths[®] Technologies

Solving your toughest production challenges.

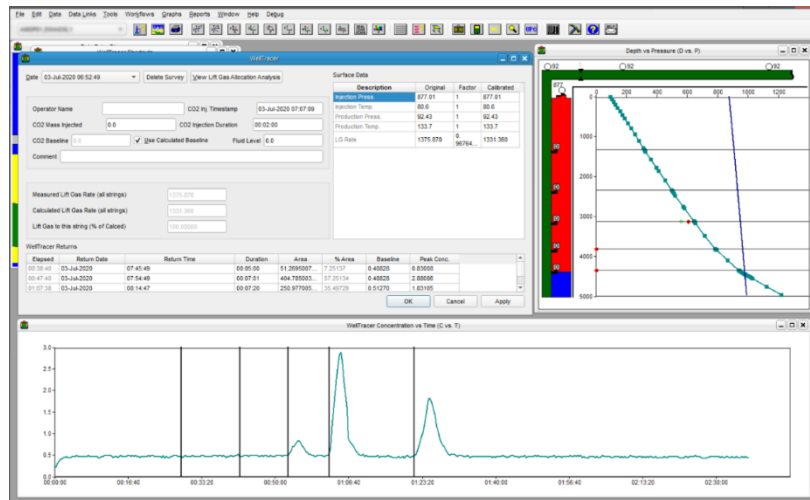
Building on our industry-respected, legacy gas-lift optimization solutions and domain knowledge, AppSmiths brings a customer-centric approach and innovative technologies and services to meet your toughest production challenges.

Proven hardware and digital solutions.



WinGLUE[®] Software

WinGLUE is the most advanced gas-lift analysis software package on the market today. Users can perform well design, simulation, performance prediction, and field-wide optimization.



Operators and engineers can search for hidden inefficiencies, evaluate the impact of correcting problems, and design new wells or suggest improvements for problem wells. You can optimize the distribution of lift gas for a single well or the entire field. Surveillance, design, and troubleshooting with WinGLUE software contributes to a direct increase in profitability and/or a decrease in operating cost.

What is new in WinGLUE[®] 7.2?

In addition to fixes for customer-reported issues, we have made changes to our product integrations with WinGLUE. These new features will make working with our other products (AVT, ValveWise, WellTracer) easier. You will also find a new models added to our plots and calculations. Continue reading to find out more about our update.

New additions

- Added Calibrated Hasan&Kabir temperature model to gas lift calculation.
- Priority Valves and Mandrels are now supported.
- New constraints for handling total lift gas, total water, total liquid, and OCI for system optimization.
- Updated non-linear optimizers.
- Oracle 12 is now supported.

- Now you can run multiple instances of WinGLUE at the same time.
- Improved SCADA Data retrieval VCR user interface.
- Updated PI Data Import interface and handling of new PI API.
- Graphics Optimization for performance improvement of large data sets.
- Refactor custom Excel-based import functions.
- VPC calculation fixes. Corrected the detection of the next VPC valve.
- Fix VPC design with dummy valves.

Product integrations

This WinGLUE release introduces significant improvements to our product integrations like ValveWise, AVT and WellTracer. The improvements are listed below.

WellTracer

- WinGLUE communication with WellTracer improvements. Now the communication is faster, and the connection does not finish if the waiting time is long.
- Fixed survey downloads from WellTracer to WinGLUE.
- Prompt added to allow user to keep or reset cache data.
- Allow multiple panels to connect to WellTracer at one time.
- WellTracer data can be imported now, by using our new .wtdata files.
- Integrated WellTracer Control Sub-system to support all existing WellTracer systems.
- Improved realtime plotting.

AVT/ValveWise

- GLV Design sent to ValveWise is now working. Also, ValveWise can send designs back to WinGLUE.
- Bring back AVT valve import to WinGLUE.
- Fix reading workover history from ValveWise database.

Solving your toughest production challenges.



www.appsmiths.com | www.welltracer.com | www.winglue.com | www.valvewise.com

Please contact support@appsmiths.com should you wish to receive guidance to select the services and products that are most appropriate for your needs.

AppSmiths' products and services are subject to the Company's standard terms and conditions, available on request. For more information, contact support.