



health **ai**247

Who We Are

Health AI247: A pioneering healthcare technology company dedicated to improving healthcare access and efficiency in South Africa.

Our Mission

- **Empowerment Through AI:** To empower patients and healthcare professionals with advanced AI technology for better health outcomes.

What We Do

- **AI-Powered Healthcare:** We provide an AI-powered platform that integrates with healthcare centers to offer personalized care and streamlined data management.

Our Impact

- **Revolutionizing Healthcare:** Our innovative solutions are set to revolutionize the healthcare system by providing a national database for personalized patient care.

Our Approach

- **Patient-Centric:** Focusing on the needs of patients, we offer free access to AI services that help them manage their medical records and health.
- **Professional Support:** We equip doctors with AI tools personalized to their hospital's requirements, enhancing their ability to deliver care.

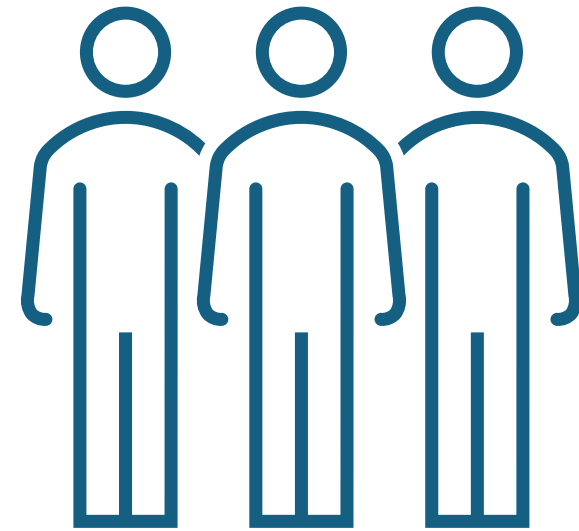
Our Technology

- **Cutting-Edge Solutions:** Utilizing Microsoft Fabric, Azure Storage, and Azure AI services, we ensure a secure, reliable, and efficient platform.
- **Biometric Security:** Implementing biometric identification to maintain the integrity and security of patient data.

Our Commitment

- **To Healthcare Excellence:** We are committed to delivering healthcare solutions that are not only technologically advanced but also accessible and user-friendly.
- **To National Health Goals:** Aligning with South Africa's National Health Insurance (NHI) vision, we strive to improve data accessibility for all authorized health providers.

Our Team



Founders

[Tinashe Masondo](#)

Founder & Chief Executive at Health AI247

[Catry Legodi](#)

Co-founder & Executive at Health AI247

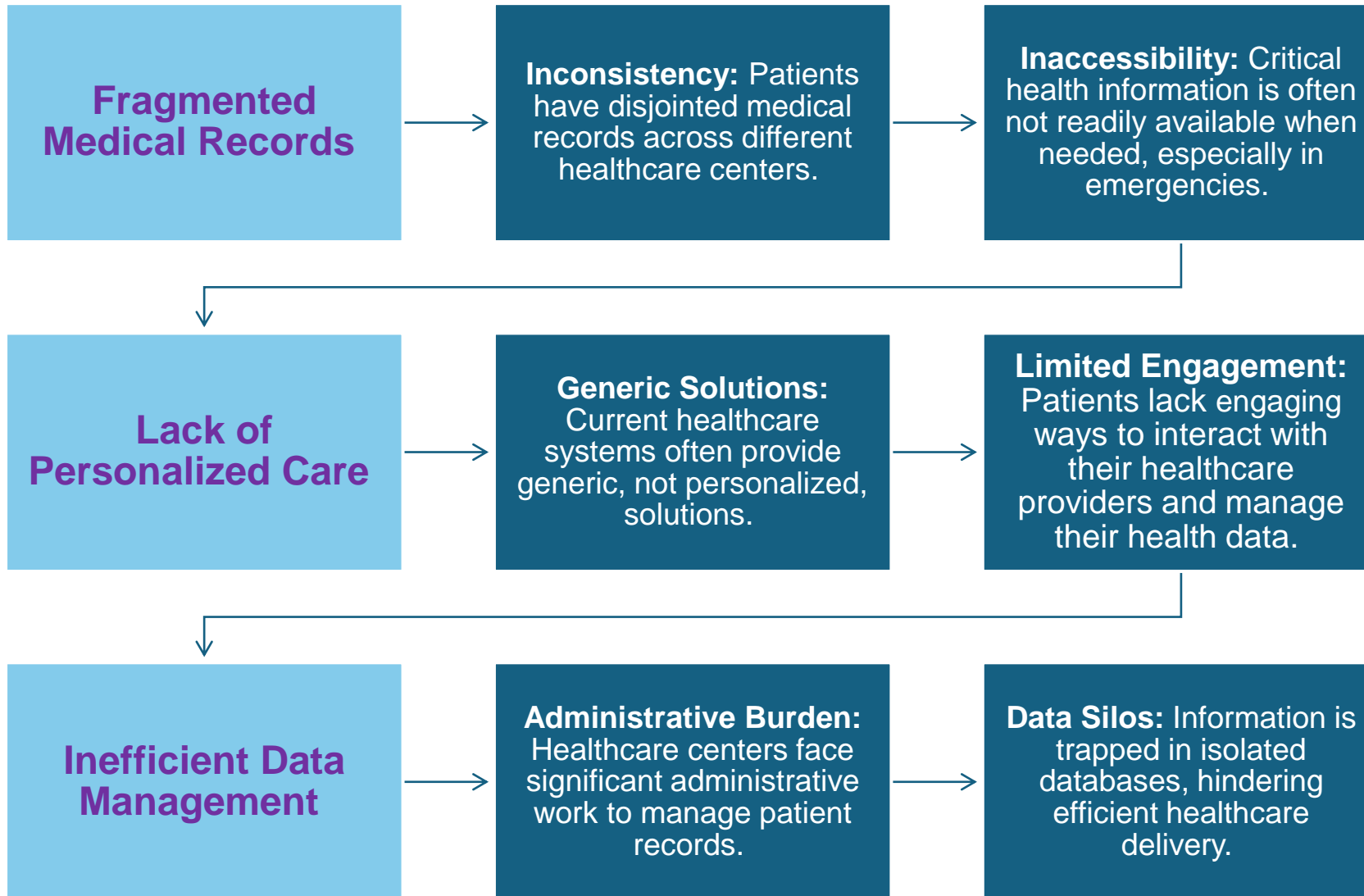
[Thomas de Beer](#)

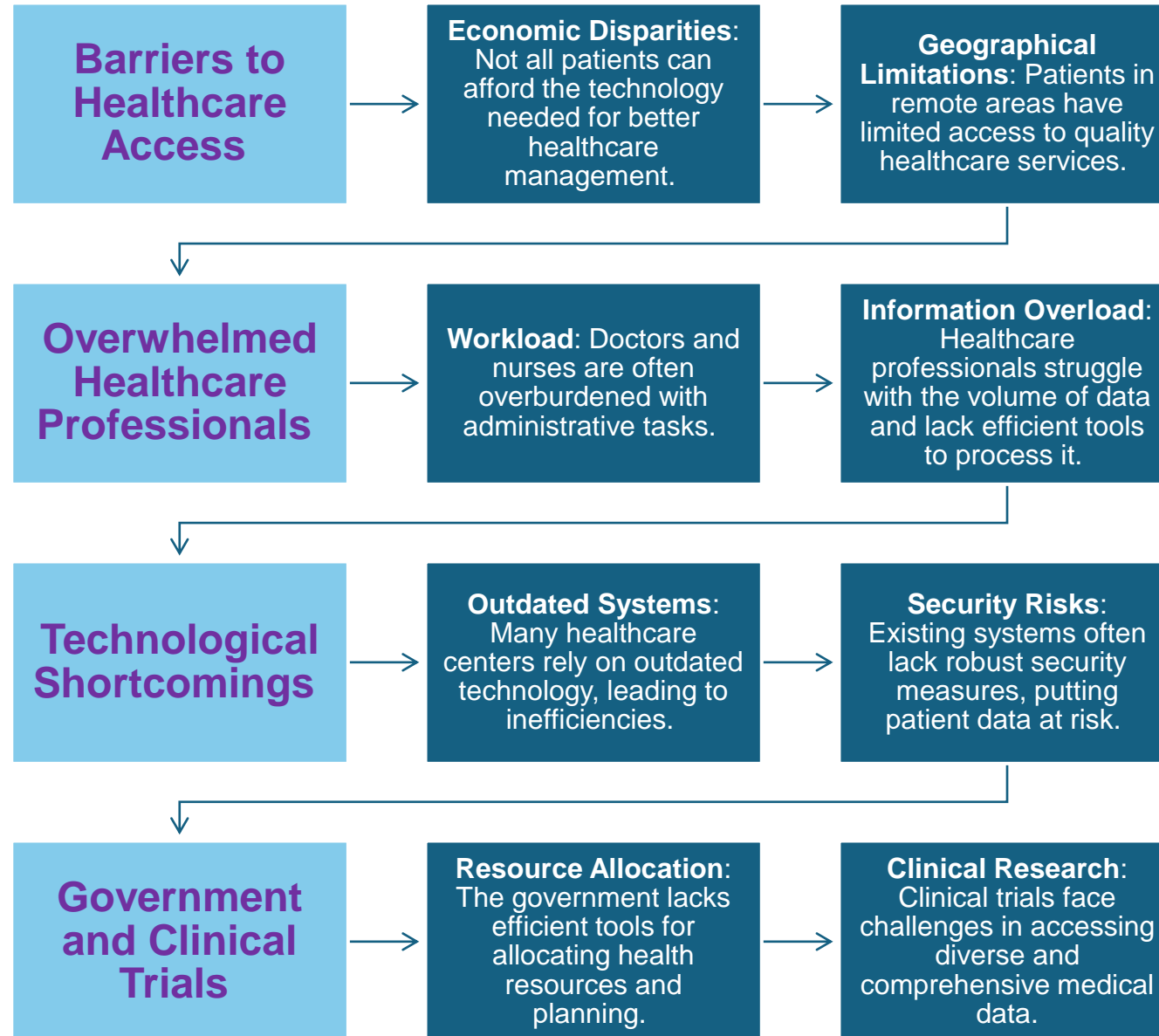
Co-founder & Chief Health Officer at Health AI247



The Challenge







Our Vision



Transforming Healthcare in South Africa

- National Database:** Establishing a comprehensive database for all healthcare centers across South Africa.
- AI Integration:** Implementing innovative AI technology within each center to personalize patient care.

Personalized Patient Experience

- AI Customization:** Tailoring AI to each patient, providing access to medical records and medical-related assistance.
- Free Access:** Offering this functionality free of charge to ensure equitable healthcare access.

Multi-Platform Interaction

- Diverse Media Platforms:** Enabling patients to interact with their AI through app.
- Tailored Communication:** Each AI bot is customized to serve the individual needs of the patient.

Empowering Healthcare Professionals

- Doctor-Specific AI:** Creating AI tools personalized to the requirements of doctors and hospitals.
- Efficient Assistance:** Assisting healthcare professionals in patient care and medical history retrieval.



Advanced Technological Framework

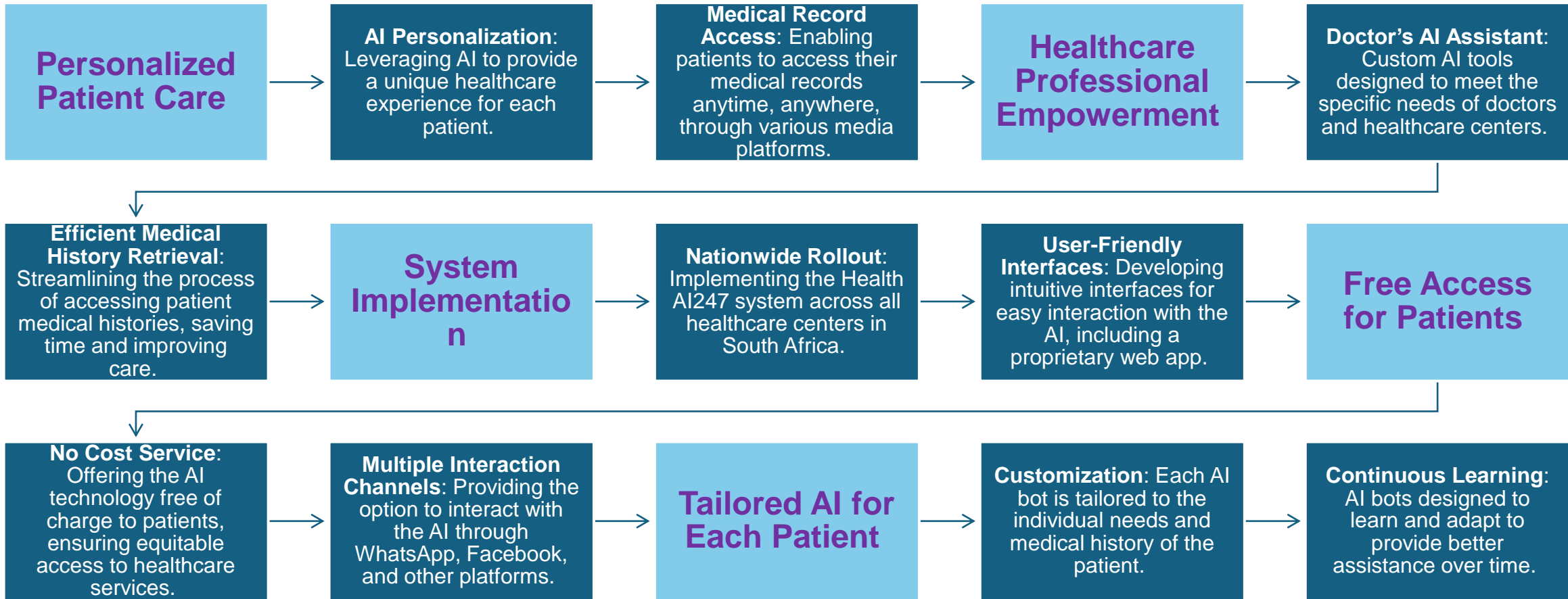
- **Microsoft Fabric:** Utilizing for data interfacing and sharing.
- **Azure Storage:** For secure data storage.
- **Azure AI:** To provide personalized AI bot assistance.
- **Biometric Identification:** Ensuring secure identification at every step.

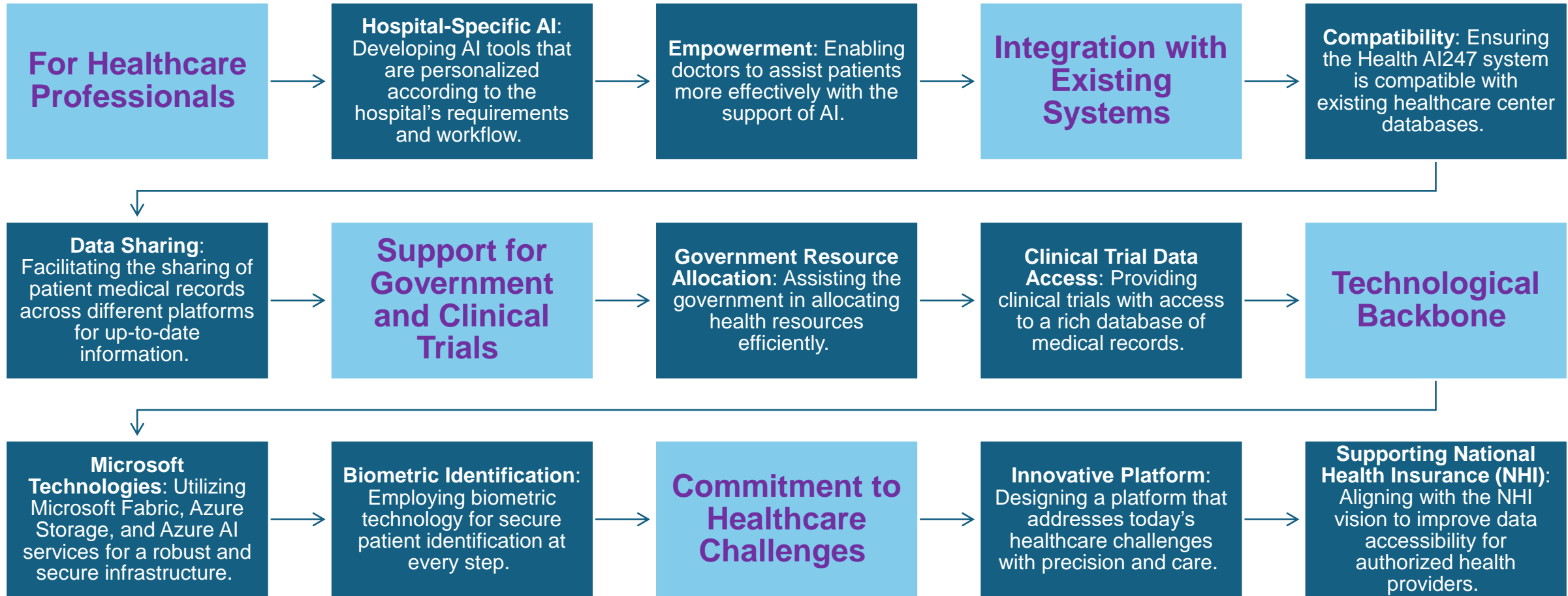
Commitment to National Health

- **Innovative Platform:** Designed to meet today's healthcare challenges with precision and care.
- **NHI Vision Support:** Committed to improving data accessibility for authorized health providers.

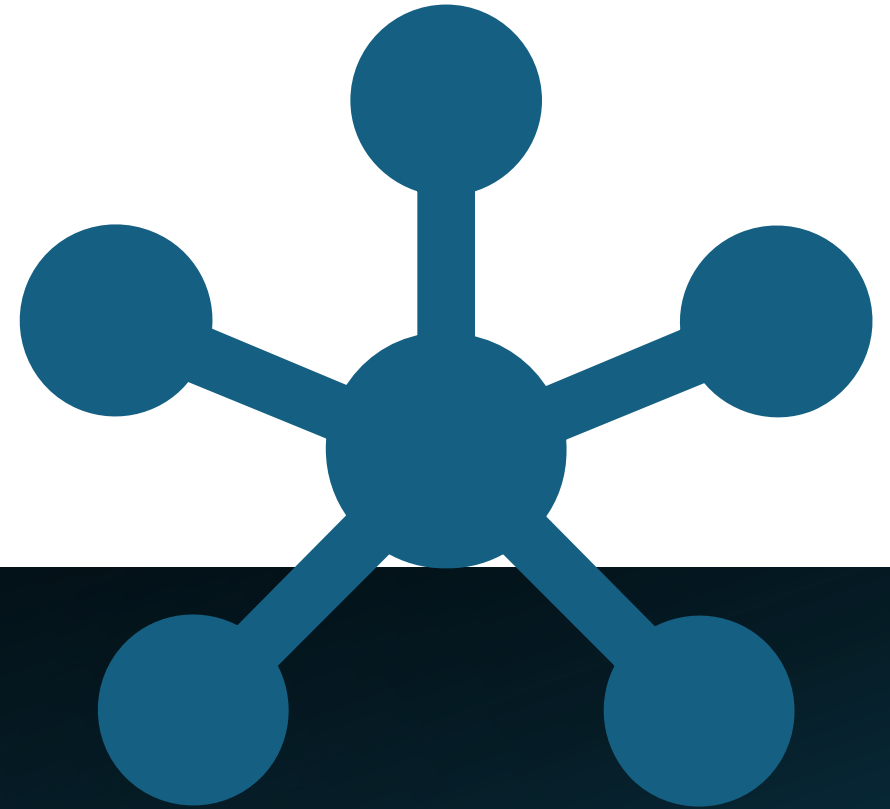
The Solution







Integration and Access



Patient Enrollment and Database Access

- **Seamless Onboarding:** Easy enrollment process for patients to join the Health AI247 database.
- **Consent Management:** Robust system for patients to grant or revoke hospital access to their medical history.

Hospital Integration

- **API Connectivity:** Providing APIs for hospitals to connect their existing systems with Health AI247.
- **Data Synchronization:** Real-time synchronization of patient records between hospital databases and Health AI247.

Access Charges

- **Transparent Pricing:** Clear pricing structure for hospitals accessing the database or using AI services.
- **Volume Discounts:** Offering discounts based on the volume of data access or number of AI interactions.

Large Hospital Networks

- **Custom Integration Solutions:** Tailored services for large hospitals with complex data systems.
- **Data Sharing Facilitation:** Ensuring up-to-date patient information is shared across different platforms.



Centralized Medical Records

- Single Patient Record:** Enabling a single, comprehensive medical record for each patient, accessible nationwide.
- Record Portability:** Allowing patients to move between states or healthcare providers without the need to create new records.

User Interaction

- Multi-Platform Support:** Patients can interact with their AI through WhatsApp, Facebook, and a proprietary web app.
- Personalized AI Bots:** Each bot is customized to the individual needs of the patient, enhancing the user experience.

Financial Model

- Free for Patients:** Maintaining free access to AI services for patients.
- Paid Services for Hospitals:** Hospitals finance the integration and access services.

Security and Compliance

- Data Protection:** Implementing stringent security measures to protect patient data.
- Regulatory Adherence:** Ensuring compliance with healthcare regulations and data privacy laws.

Support and Training

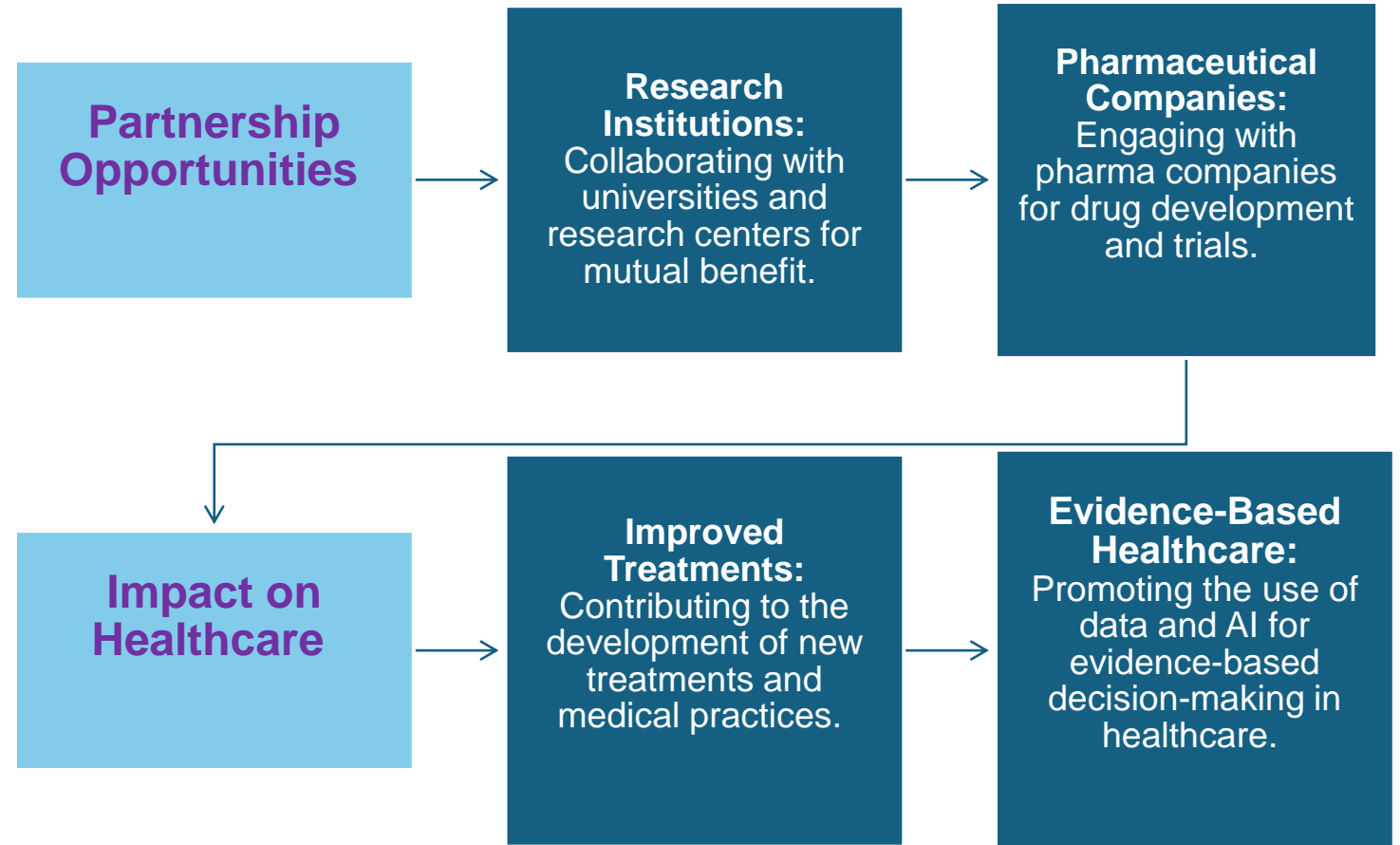
- Hospital Staff Training:** Providing training for hospital staff to effectively use the Health AI247 system.
- Ongoing Support:** Offering continuous technical support to resolve any issues promptly.



Government and Clinical Trials







Technological Solutions



Data Integration and Management

- Microsoft Fabric:** Utilized for seamless interfacing with various databases, ensuring compatibility and efficient data sharing.
- Data Transformation:** Employing advanced algorithms for cleaning, transforming, and extracting data to ensure accuracy and usability.

Data Storage

- Azure Storage Accounts:** Securely storing processed data with high availability and redundancy to protect against data loss.
- Scalability:** Designed to handle the growing volume of healthcare data as more centers and patients are onboarded.

AI and Personalization

- Azure AI Services:** Providing the backbone for personalized AI bot assistance, capable of learning and adapting to individual patient needs.
- Machine Learning:** Implementing machine learning models to improve AI interactions and predictive healthcare analytics.

Security and Compliance

- Biometric Identification:** Incorporating biometric technologies for secure and reliable patient identification at every interaction point.
- Compliance:** Ensuring all solutions meet the highest standards of healthcare data protection and privacy regulations.



Administrative Processes

- **Microsoft Cloud Healthcare Solutions:** Managing administrative tasks efficiently, reducing overhead, and improving service delivery.
- **Automation:** Leveraging AI to automate routine tasks, freeing up healthcare professionals to focus on patient care.

User Interface

- **Cross-Platform Accessibility:** Ensuring patients can interact with their personalized AI through various media platforms like WhatsApp, Facebook, and a proprietary web app.
- **User Experience:** Focusing on intuitive design and ease of use to encourage patient engagement and satisfaction.

Research and Development

- **Continuous Innovation:** Investing in R&D to stay at the forefront of healthcare technology and AI applications.
- **Feedback Loop:** Incorporating user feedback to refine and enhance technological offerings continuously.

Support and Maintenance

- **Technical Support:** Providing robust support for healthcare centers and professionals to address any technical issues swiftly.
- **System Updates:** Regularly updating the system with the latest security patches and feature enhancements.





**Market
Opportunity**

Market Size and Growth

- Healthcare Expenditure: South Africa spent 9% of its GDP on healthcare in 2017, which is higher than the WHO's recommended spending for a country of its socioeconomic status¹.
- Market Valuation: The South Africa medical devices market size was valued at \$3.6 billion in 2021².
- Growth Rate: The market is expected to grow at a CAGR of more than 4% during the forecast period (2022-2027)².

Healthcare System Overview

- Two-Tiered System: Comprising of the public and the rapidly growing private sector¹.
- Public Sector: The government is implementing National Health Insurance (NHI) to establish universal healthcare¹.

Infrastructure and Personnel

- Total Hospitals: Increase from 687 in 2012 to 715 in 2016¹.
- Healthcare Personnel: Growth in total physicians from 38,444 in 2012 to 43,425 in 2016¹.

Government Initiatives

- NHI Implementation: A gradual rollout expected to boost the public sector's contribution and necessitate private sector engagement¹.



Technological Adoption

- Digital Transformation:** An increasing trend towards the adoption of digital health solutions and AI technologies in healthcare.

Health AI247's Strategic Position

- Central Hub:** Positioning as the central hub connecting hospitals with their patients.
- Alignment with NHI:** Supporting the government's vision for improved data accessibility for authorized health providers.

Target Customer Base

- Hospitals:** Large hospitals seeking integration with a national database.]
- Government:** Entities looking for efficient health resource allocation.
- Clinical Trials:** Organizations requiring access to a comprehensive medical database.

Competitive Landscape

- First-Mover Advantage:** Pioneering a national AI-powered healthcare database in South Africa.
- Innovation and Compliance:** Offering advanced AI solutions that comply with NHI regulations.



Revenue Potential

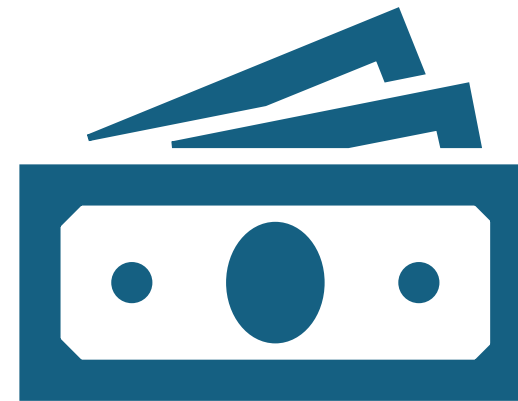
- **Subscription and Access Fees:** From hospitals and government entities for database access and AI services.
- **Integration Services:** Revenue from hospitals integrating their in-house databases.

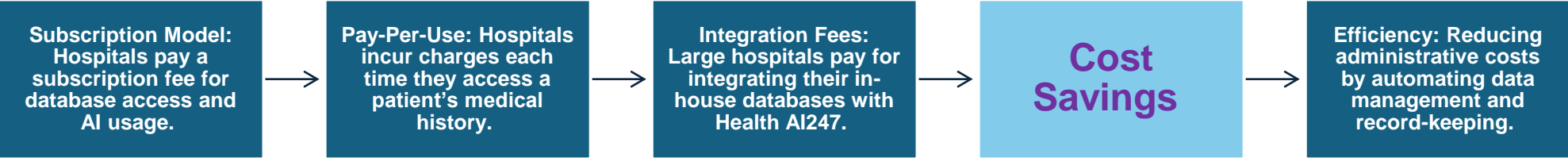
Risks and Challenges

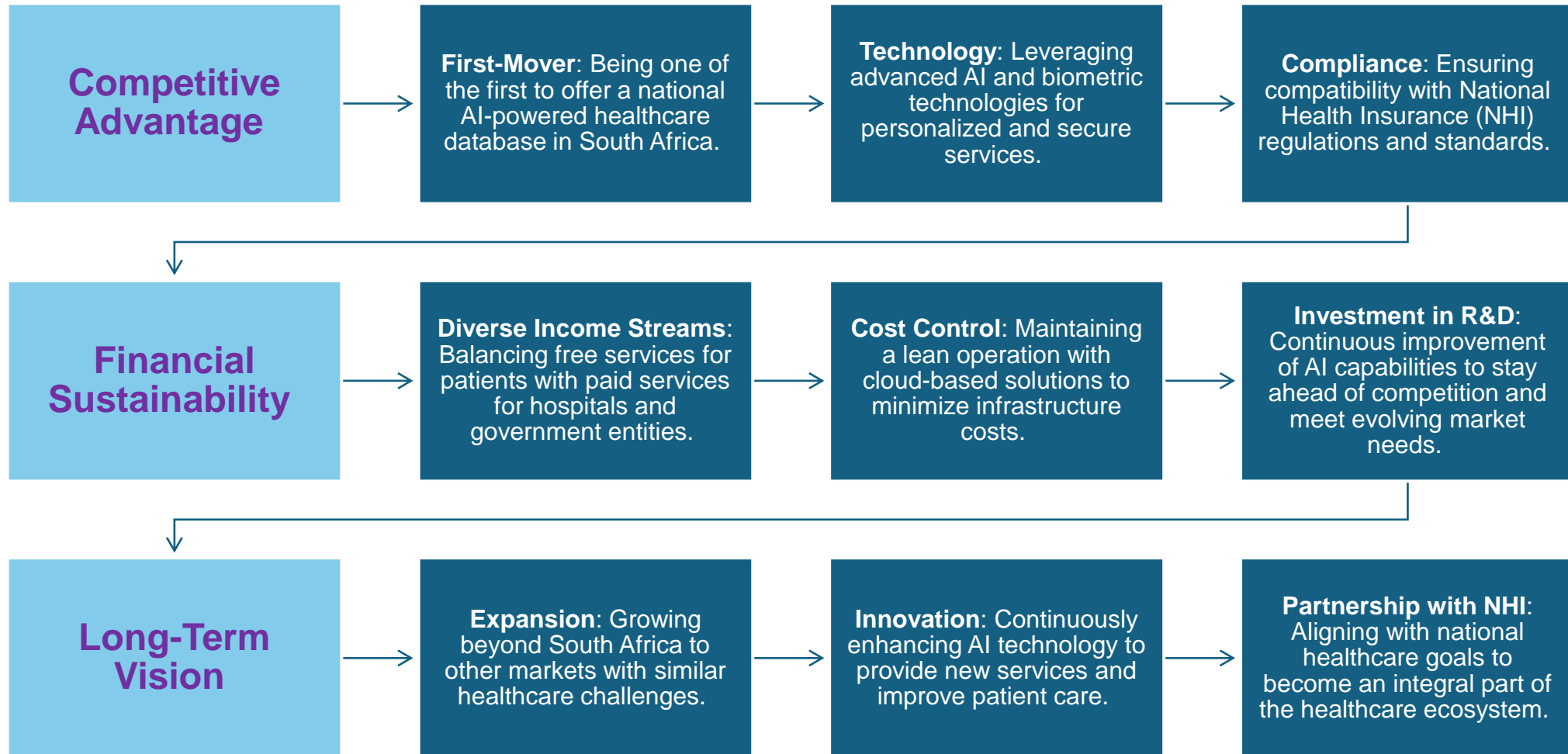
- **Market Penetration:** Overcoming barriers to entry in a market with established players.
- **Regulatory Compliance:** Adhering to evolving healthcare regulations and standards.



Business Model







Conclusion



Our Commitment

- To Patients:** Ensuring that every individual in South Africa has access to personalized, AI-driven healthcare.
- To Healthcare Providers:** Empowering doctors and medical staff with AI tools that enhance patient care and operational efficiency.
- To Innovation:** Continuously advancing our technology to meet the evolving needs of the healthcare industry.

Our Gratitude

- Thank You:** We extend our deepest gratitude to our potential investors for considering this opportunity to transform healthcare in South Africa.
- Appreciation for Support:** We appreciate the support and belief in our vision to make a lasting impact on the health and well-being of millions.

Looking Ahead

- The Future of Healthcare:** With Health AI247, we are not just investing in a company; we are investing in the future of healthcare.
- Growth and Expansion:** We are poised for rapid growth and expansion, with a clear roadmap to becoming a leader in AI-powered healthcare solutions.

Call to Action

- Join Us:** We invite you to join us on this journey to revolutionize healthcare in South Africa and beyond.
- Make a Difference:** Your investment will not only yield financial returns but also contribute to a greater cause—improving lives through technology.



Final Thoughts

- **A Visionary Leap:** Health AI247 represents a visionary leap forward, combining technology and healthcare in ways never seen before in South Africa.
- **A Partnership for Change:** We seek partners who share our passion for change and our commitment to excellence.

Contact Information

- **Stay in Touch:** For further discussions or questions, reach us at support@healthai247.co.za.
- **Open Dialogue:** We believe in maintaining an open dialogue with our investors and welcome any feedback or inquiries.

