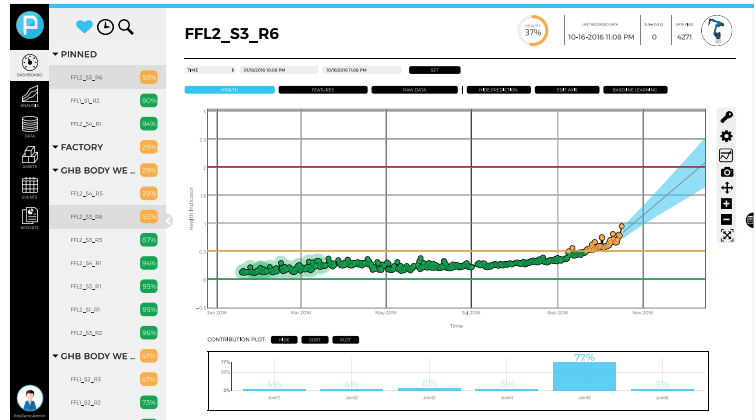


# THE PDX PLATFORM

## An End-to-End Platform for Predictive Maintenance & Quality

**pdx**

PDX is an end-to-end predictive monitoring platform that collects, employs machine learning and AI to analyze data, and uses a template-driven approach for the rapid deployment of solutions to reduce downtime, increase productivity, prevent waste, enhance maintenance scheduling, and improve product quality.



### Solution Highlights

SOLUTIONS FOR OVER  
**15**  
COMMON COMPONENTS

SOLUTIONS FOR OVER  
**25**  
ASSET TEMPLATES

SOLUTIONS FOR OVER  
**20**  
INDUSTRIAL APPLICATIONS

ISSUES DETECTED  
**DAYS, WEEKS OR MONTHS**  
BEFORE FAILURES OCCURRED

DEPLOYED IN OVER  
**70**  
SUCCESSFUL ENGAGEMENTS

### Customer Testimonials



With Predictronic, we're able to monitor the machine health, see real-time how the machine is doing, and start to see a signal of a problem before it becomes a major problem. At this point, I'm really pleased with the progress we've made and I'm anxious to expand this solution to our other nine hot forming machines.



They [Predictronic] offer a unique advantage over other vendors who provide packages with limited solutions. Problems are solved all at once by covering every possible analytic method. This is totally different approach from previous methods. Introducing these new techniques made me I feel like I can finally see light at the end of the tunnel.

Predictronic delivers Industrial AI and predictive analytics software solutions and services which provide actionable data-driven intelligence to drive real-world impact in industrial applications.

[predictronic.com](http://predictronic.com) • +1.513.792.8090 • [contact@predictronic.com](mailto:contact@predictronic.com)

**predictronic**<sup>™</sup>